

ALFORD AT BETHESDA

SITE PLAN



- ★ Model Home
- Block A
- Block B
- Block C
- ⬆ N
- Under Contract

ALFORD AT BETHESDA

LOT PREMIUMS

Homesite	Premium
1A	\$0
2A	\$0
3A	\$0
4A	\$0
5A	\$0
6A	\$3,000
7A	\$3,000
8A	\$3,000
9A	\$5,000
10A	\$5,000
11A	\$5,000
12A	\$5,000
13A	\$3,000
14A	\$3,000
15A	\$0
16A	\$0
17A	\$3,000
18A	\$7,000
19A	\$5,000
20A	\$5,000
21A	\$5,000
22A	\$3,000
23A	\$0
24A	\$0
25A	\$5,000
26A	\$3,000
27A	\$0
28A	\$0

Homesite	Premium
1B (Model)	\$0
2B	\$0
3B	\$3,000
4B	\$3,000
5B	\$3,000
6B	\$5,000
7B	\$0
8B	\$0
9B	\$0
10B	\$0

Homesite	Premium
1C	\$0
2C	\$0
3C	\$0

ALFORD AT BETHESDA

EXPLORE THE AREA



ANSLEY
REAL ESTATE

CHRISTIE'S
INTERNATIONAL REAL ESTATE

SG SHIRLEY GARY GROUP
BUILDER DEVELOPER SERVICES

Jamie Mock
770-616-1531 | 770-284-9900
JamieMock@AnsleyRE.com

RESIBUILT
HOMES

AlfordAtBethesda.com

ALFORD AT BETHESDA

INCLUDED FEATURES

EXTERIOR FEATURES

- Distinctive exteriors with designer color packages and elevations
- Architecturally designed brick and stone elevations
- Front porch (per plan)
- 2 Car garage with door openers
- Painted shutters and aluminum gutters
- Professionally landscaped with sodded yards

INTERIOR FINISHES

- 9' Ceilings on first and second floor
- Sherwin Williams paint on walls, doors, and trim
- Mohawk RevWood Plus flooring in the living room, foyer, dining room, kitchen, secondary bathrooms, and laundry rooms
- Mohawk Carpet with 6lb pad in all other areas
- Trim package with 5-1/4" baseboards throughout the first floor and 3-1/4" on the second floor
- Decora light switches throughout
- Maxim Corona light package throughout
- Level 1 Quartz countertops in kitchen and all bathrooms
- Brushed Nickel Hardware
- Maxim Trio ceiling fan in main living area and primary suite
- Crown molding in foyer and master suite

PRIMARY SUITE FEATURES

- Quartz countertops in primary bath
- Ceramic tile walls in primary shower
- Tile flooring
- Semi-frameless shower door
- Crown molding in primary bedroom
- Ceiling fan and light kit
- Trey ceilings

KITCHEN HIGHLIGHTS

- 42" Wall cabinets with crown molding
- Quartz countertops with undermount stainless sink
- Subway tile backsplash
- Frigidaire stainless steel appliances: range, stove, dishwasher, microwave
- Garbage disposal
- Moen kitchen pull down faucet
- Kitchen pantry with wired shelving

ENERGY EFFICIENT/TECHNICAL FEATURES

- 15 Seer HVAC system for energy efficiency
- Low-E double pane insulated windows
- Honeywell T6 programmable thermostat
- LED lighting

WARRANTY

- 1 year builder warranty
- HBW 2-10 New Home Warranty
- Pre-closing orientation
- Termite inspection with an included bait system and 1 year protection

ALFORD AT BETHESDA

BASE PRICES

Home Plan	Square Feet	Beds	Baths	Garage	Base Sales Price	Plan Highlights
Berwycke	2,306	4	3.5	2 Car	\$548,151	Front Entry Garage
Brighton	2,507	4	3	2 Car	\$563,377	Front Entry Garage, Bedroom & Full Bath on Main
Brentwood	2,278	4	3	2 Car	\$572,727	Alley Entry Garage, Bedroom & Full Bath on Main
Belmont	2,501	5	3.5	2 Car	\$574,159	Alley Entry Garage, Primary Suite on Main
Berkley	2,620	5	4	2 Car	\$577,840	Front Entry Garage, Bedroom & Full Bath on Main

ALFORD AT BETHESDA

THE BERWYCKE



Main Level



Upper Level

ANSLEY
REAL ESTATE

CHRISTIE'S
INTERNATIONAL REAL ESTATE

SG SHIRLEY GARY GROUP
BUILDER/DEVELOPER SERVICES

Jamie Mock
770-616-1531 | 770-284-9900
JamieMock@AnsleyRE.com

RESIBUILT
HOMES

AlfordAtBethesda.com

ALFORD AT BETHESDA

THE BRIGHTON



Main Level



Upper Level

ANSLEY
REAL ESTATE

CHRISTIE'S
INTERNATIONAL REAL ESTATE

SG SHIRLEY GARY GROUP
BUILDER DEVELOPER SERVICES

Jamie Mock
770-616-1531 | 770-284-9900
JamieMock@AnsleyRE.com

RESIBUILT
HOMES
AlfordAtBethesda.com



Drawings are for illustrative purposes only and may vary in precise detail from the actual plans and specifications. See agent for details. 07-30-25

AnsleyRE.com | 31 Church Street | Alpharetta, GA 30009

ALFORD AT BETHESDA

THE BRENTWOOD



Main Level



Upper Level

ANSLEY
REAL ESTATE

CHRISTIE'S
INTERNATIONAL REAL ESTATE

SGG SHIRLEY GARY GROUP
BUILDER DEVELOPER SERVICES

Jamie Mock
770-616-1531 | 770-284-9900
JamieMock@AnsleyRE.com

RESIBUILT
HOMES
AlfordAtBethesda.com



Drawings are for illustrative purposes only and may vary in precise detail from the actual plans and specifications. See agent for details. 07-30-25

AnsleyRE.com | 31 Church Street | Alpharetta, GA 30009

ALFORD AT BETHESDA

THE BELMONT



Main Level



Upper Level

ANSLEY
REAL ESTATE

CHRISTIE'S
INTERNATIONAL REAL ESTATE

SG SHIRLEY GARY GROUP
BUILDER DEVELOPER SERVICES

Jamie Mock
770-616-1531 | 770-284-9900
JamieMock@AnsleyRE.com

RESIBUILT
HOMES
AlfordAtBethesda.com

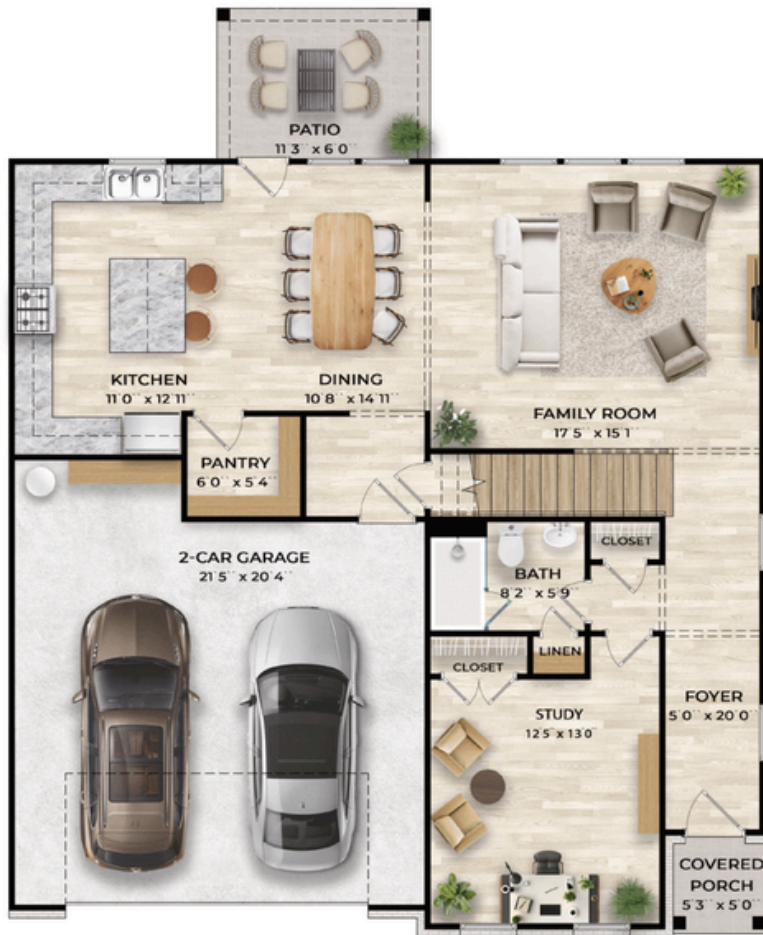


Drawings are for illustrative purposes only and may vary in precise detail from the actual plans and specifications. See agent for details. 07-30-25

AnsleyRE.com | 31 Church Street | Alpharetta, GA 30009

ALFORD AT BETHESDA

THE BERKLEY



Main Level



Upper Level

ANSLEY
REAL ESTATE

CHRISTIE'S
INTERNATIONAL REAL ESTATE

SG SHIRLEY GARY GROUP
BUILDER/DEVELOPER SERVICES

Jamie Mock
770-616-1531 | 770-284-9900
JamieMock@AnsleyRE.com

RESIBUILT
HOMES
AlfordAtBethesda.com



Drawings are for illustrative purposes only and may vary in precise detail from the actual plans and specifications. See agent for details. 08-11-25

AnsleyRE.com | 31 Church Street | Alpharetta, GA 30009

ALFORD AT BETHESDA

PREFERRED LENDER

Development Financing Sponsored By



Joe Riggs

Senior Loan Officer | NMLS #966672
770-335-770

2500 Northwinds Parkway, Suite 150
Alpharetta, GA 30009

Company NMLS #3274 | Equal Housing Opportunity States licensed in: AL, FL, GA, NC, SC, TN

ANSLEY
REAL ESTATE

CHRISTIE'S
INTERNATIONAL REAL ESTATE

SG SHIRLEY GARY GROUP
BUILDER DEVELOPER SERVICES

Jamie Mock
770-616-1531 | 770-284-9900
JamieMock@AnsleyRE.com

RESIBUILT
HOMES
AlfordAtBethesda.com



Information is believed accurate, but not warranted and is subject to changes, omissions, and errors. 08-27-25

AnsleyRE.com | 31 Church Street | Alpharetta, GA 30009