

UNIT LAYOUT AND UNIT SPECIFICATIONS





ONE BAL HARBOUR

RESIDENCE A

2 BEDROOMS, 2.5 BATHS,
GRAND SALON

INTERIOR AREA: 2,114 SQ. FT.

TERRACE AREA: 446 SQ. FT.

TOTAL AREA: 2,580 SQ. FT.



RESIDENCE B

2 BEDROOMS, 2.5 BATHS,
GRAND SALON

INTERIOR AREA: 1,918 SQ. FT.

TERRACE AREA: 535 SQ. FT.

TOTAL AREA: 2,453 SQ. FT.

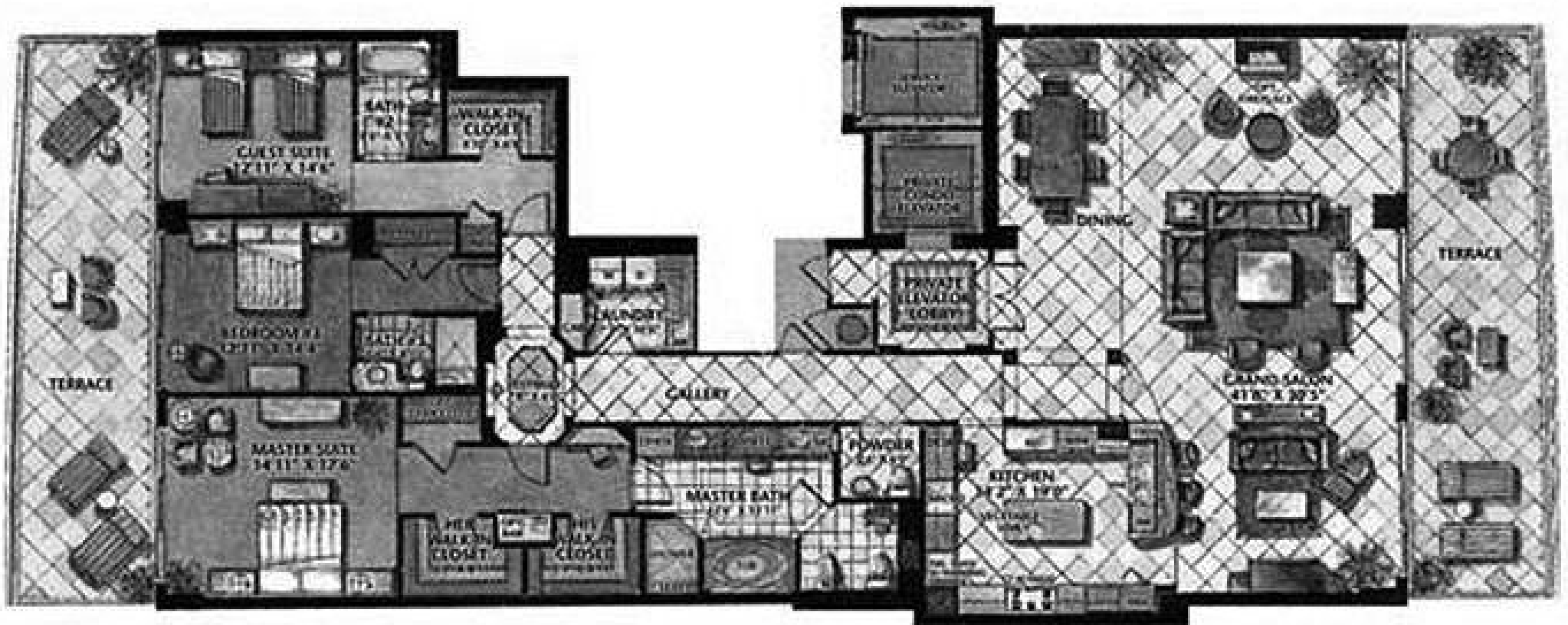

ONE BAL HARBOUR











RESIDENCE F

3 BEDROOMS, 3.5 BATHS,
FAMILY ROOM, GRAND SALON

INTERIOR AREA: 2,773 SQ. FT.

TERRACE AREA: 700 SQ. FT.

TOTAL AREA: 3,473 SQ. FT.


ONE BAL HARBOUR



RESIDENCE G

3 BEDROOMS, 3.5 BATHS,
FAMILY ROOM, GRAND SALON

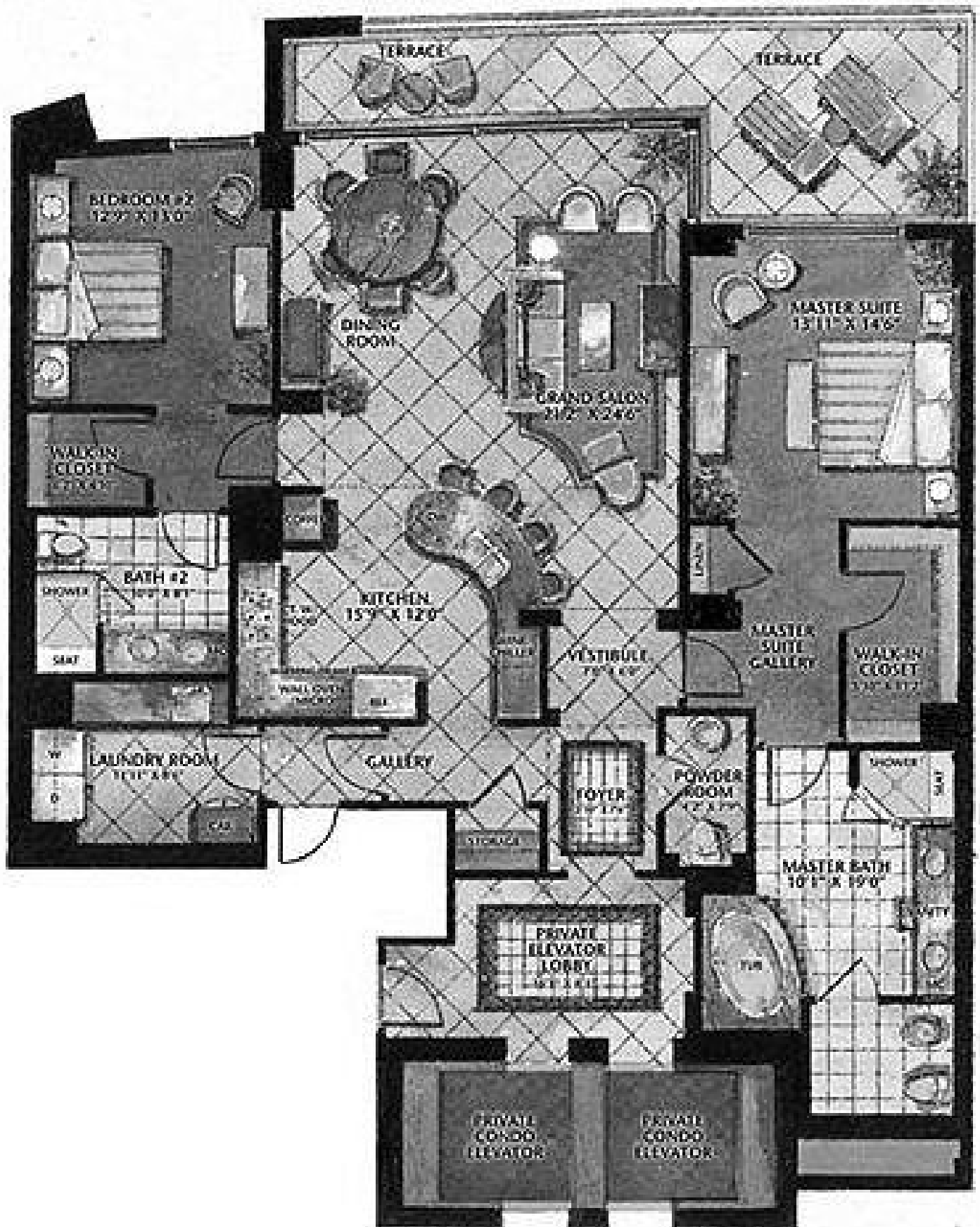
INTERIOR AREA: 2,650 SQ. FT.

TERRACE AREA: 700 SQ. FT.

TOTAL AREA: 3,350 SQ. FT.

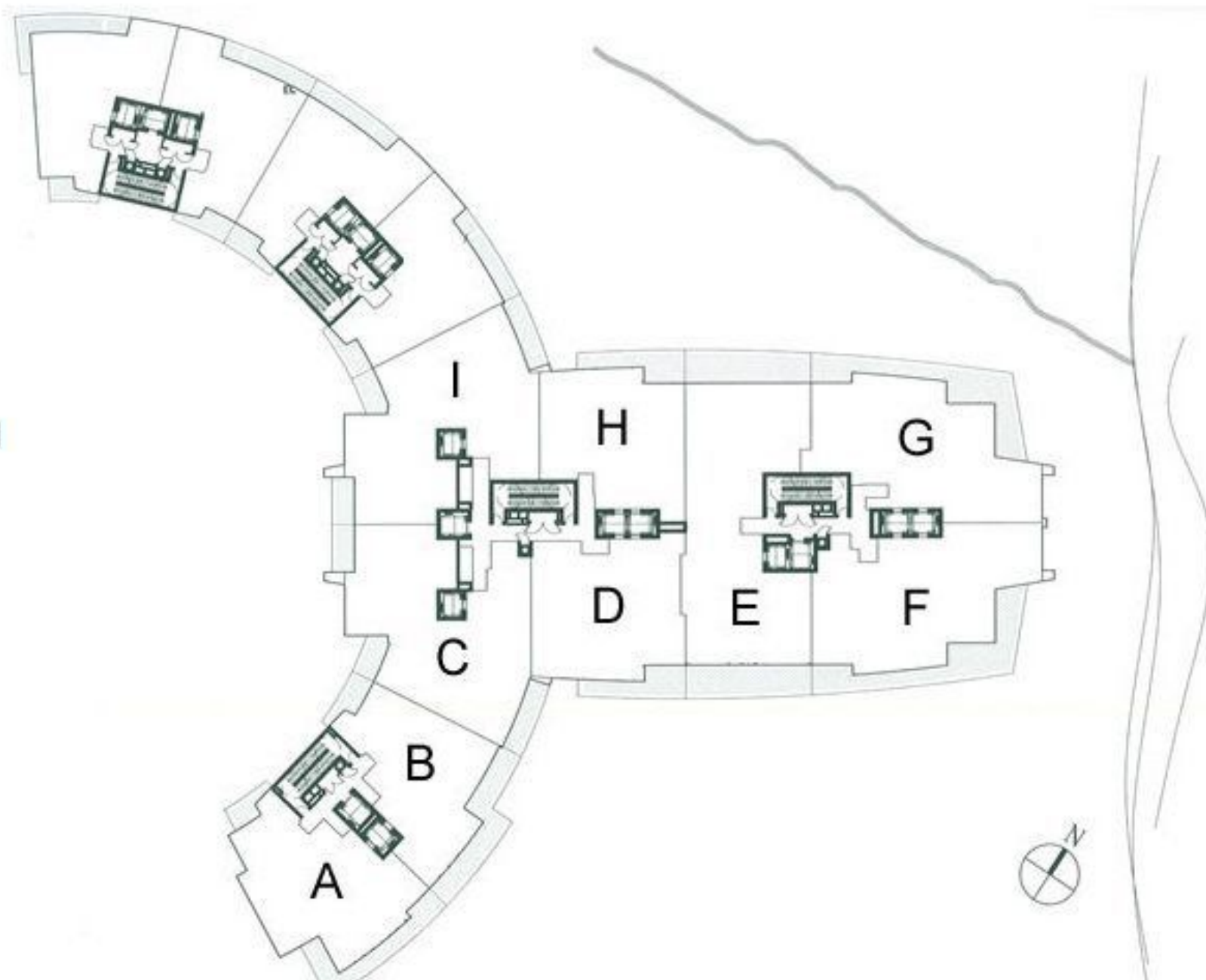

ONE BAL HARBOUR







**Intracoastal
and
City**

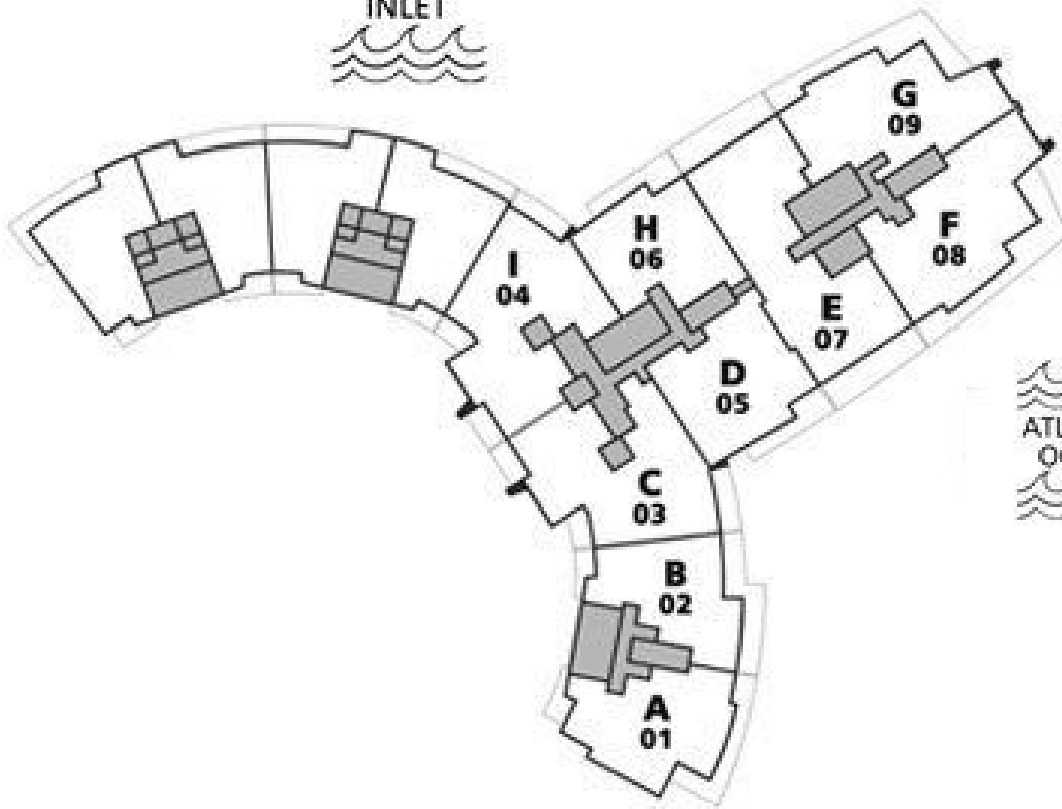


**Baker's
Haulover
Inlet**

**Atlantic
Ocean**

COLLINS AVENUE

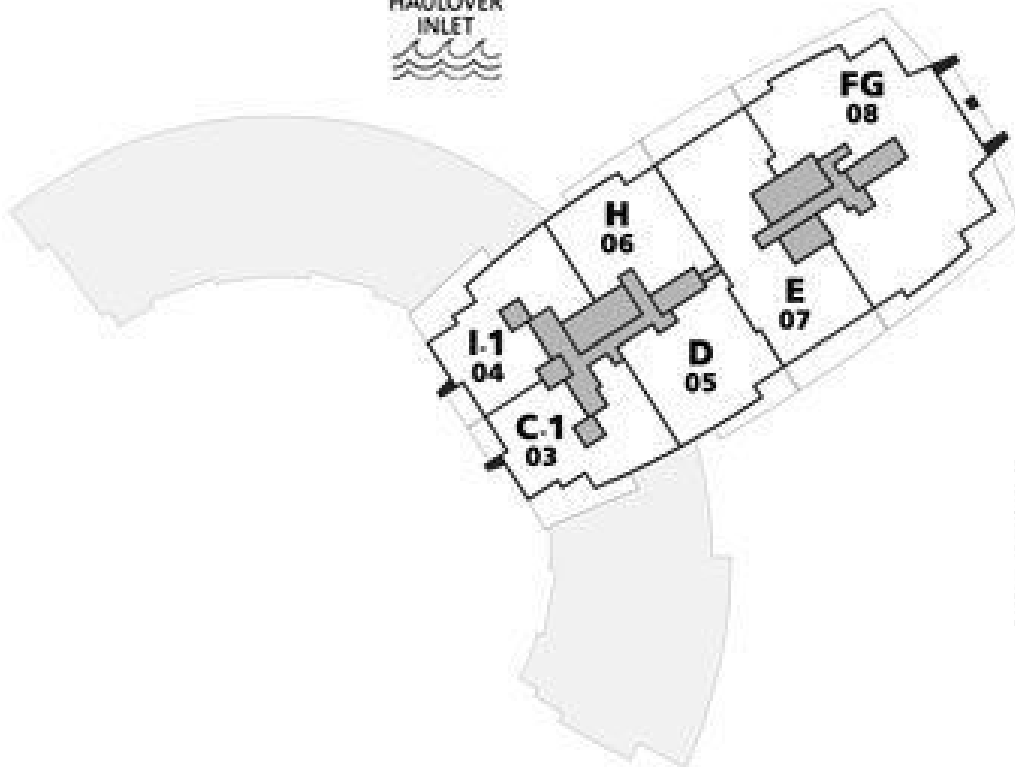
HAUOVER
INLET



ATLANTIC
OCEAN

COLLINS AVENUE

HAUOVER
INLET



ATLANTIC
OCEAN

