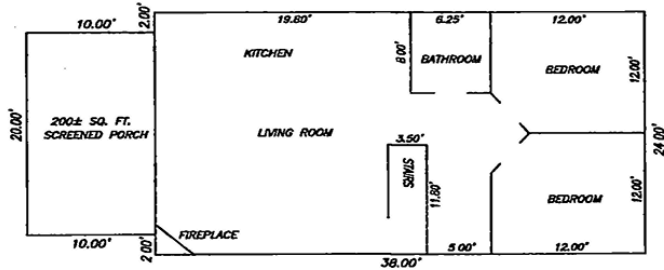


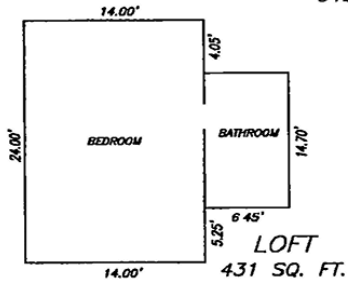
CONDOMINIUM PLAT

FIRST ADDENDUM TO GRAND PINES CONDOMINIUM NORTH

INCLUDING LOT 5, CSM #5448; LOT 2, CSM# 5447; LOT 5 CSM #909; LOT 1 CSM #1060; LOT 4, CSM #1899; LOT 3, CSM 1898, LOTS 1 & 2, CSM #2988; LOT 2 CSM #1897; LOCATED IN GOVERNMENT LOTS 1 AND 3 AND PART OF THE NE 1/4 OF THE NE 1/4, ALL IN SECTION 36, T. 41 N., R. 8 W., IN THE TOWN OF HAYWARD, SAWYER COUNTY, WISCONSIN.



FIRST FLOOR
912 SQ. FT.

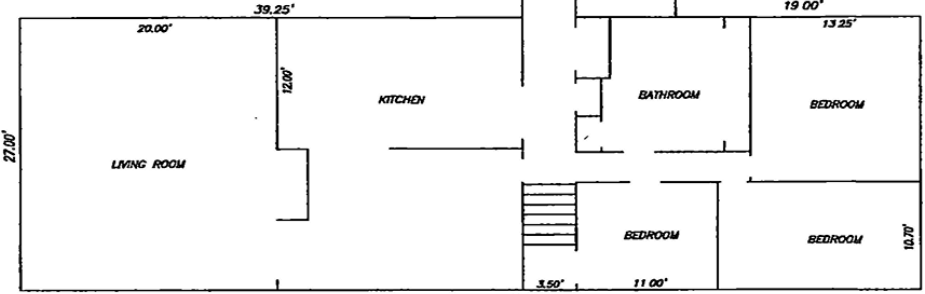


LOFT
431 SQ. FT.

UNITS 11 - 14

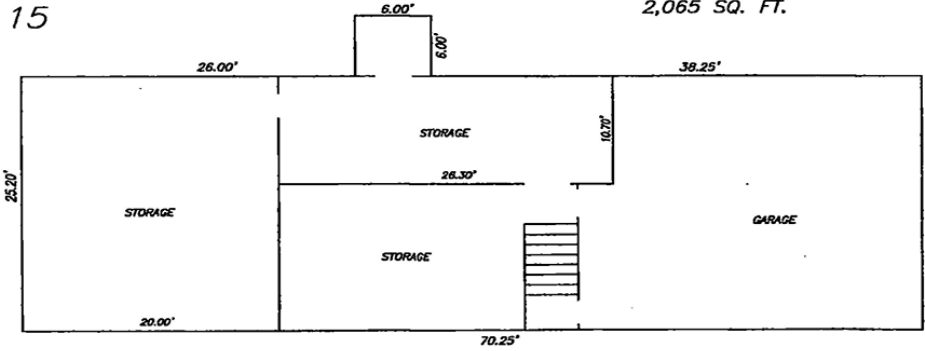


UNIT 15



FIRST FLOOR
2,065 SQ. FT.

BASEMENT
1,806 SQ. FT.



FLOOR PLANS

CLIENT: GRAND PINES CONDOMINIUM NORTH
52.00130885 DIMS 40
46.00" INTERIOR DIMENSIONS

SCALE: 1" = 8'
FILE: T41NRBW/SEC36/GRAND_PINES
ACAD: GRAND_PINES
PAC: LTNGPS

DRAFTED BY: C/JG
JOB: H03/051
SHEET 9 OF 11

HEART OF THE NORTH
SURVEYING OF HAYWARD, INC.

10339 N DUFFY ROAD
HAYWARD, WI. 54843
PH: 715/634-2442
FAX: 715/634-8444
E-MAIL: INFO@HONSURVEYING.COM

401400 38 of 40 30865 38 of 40