



JESSICA ADAMS
LUXURY REAL ESTATE

1076 NE LITTLE RIVER DRIVE
6BR | 5.5BA | 4,432 SQ. FT. | 10,055 LOT SQ. FT.

OFFERED AT: \$39,500 P/MO.

Experience the best of Miami waterfront living at this fully furnished estate on coveted Little River. Featuring 6 bedrooms, 5 bathrooms, and 4,432 SF of living space on a 10,055 SF lot, this gated property offers 75 feet of waterfront frontage, a private dock, and direct ocean access with no fixed bridges. Behind a gated entrance, the home welcomes you with soaring ceilings, expansive open-concept living areas, and abundant natural light. The spacious great room seamlessly flows into a chef's kitchen featuring custom cabinetry, premium stainless-steel appliances, oversized countertops, and generous dining space designed for entertaining family and guests. The home includes two waterfront primary suites, spacious guest accommodations, and seamless indoor-outdoor living throughout. Outside, enjoy a private resort-style retreat complete with a heated saltwater pool, tropical landscaping, expansive sun deck, waterfront lounge areas, oversized hanging chairs, and a fully equipped summer kitchen featuring a built-in grill, wood-fired pizza oven, and covered dining area. Designed for both relaxation and entertaining, this exceptional waterfront property delivers the ultimate South Florida lifestyle.

- 3 levels of luxury living
- Soaring ceilings throughout with abundant natural light
- Covered entertainment patio with summer kitchen
- Pool and spa, perfect for entertaining
- Private dock with unlimited height for boats to open bay
- Fully furnished, perfect for immediate living!



COME HOME TO LUXURY®

JESSICA ADAMS
Senior Director of Luxury Sales
Sales Associate

M: 305.877.0212
O: 305.695.6060
jessica.adams@elliman.com
comehometoluxury.com

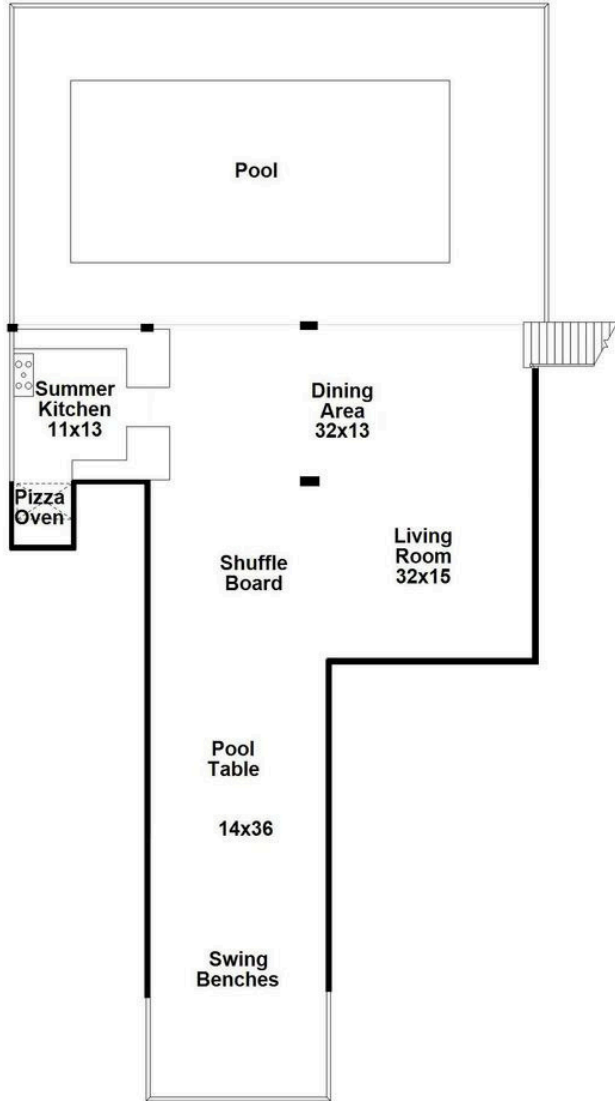
 Douglas Elliman



FLOOR PLAN



JESSICA ADAMS
AT DOUGLAS ELLIMAN REAL ESTATE



GROUND FLOOR



FIRST FLOOR



COME HOME TO LUXURY[®]

JESSICA ADAMS

Senior Director of Luxury Sales
Sales Associate

M: 305.877.0212

O: 305.695.6060

jessica.adams@elliman.com
comehometoluxury.com

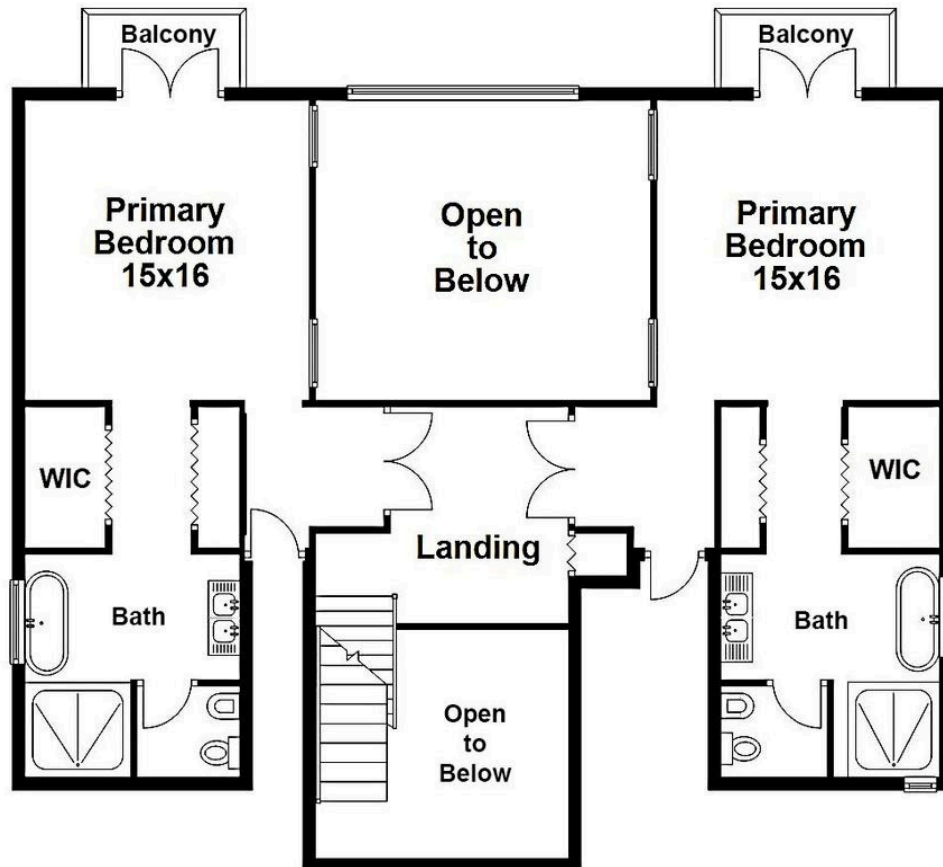


1515 SUNSET DR # 10, CORAL GABLES, 33143, 305.695.6060. © 2024 DOUGLAS ELLIMAN REAL ESTATE. ALL MATERIAL PRESENTED HEREIN IS INTENDED FOR INFORMATION PURPOSES ONLY. WHILE THIS INFORMATION IS BELIEVED TO BE CORRECT, IT IS REPRESENTED SUBJECT TO ERRORS, OMISSIONS, CHANGES OR WITHDRAWAL WITHOUT NOTICE. ALL PROPERTY INFORMATION, INCLUDING, BUT NOT LIMITED TO SQUARE FOOTAGE, ROOM COUNT, NUMBER OF BEDROOMS AND THE SCHOOL DISTRICT IN PROPERTY LISTINGS SHOULD BE VERIFIED BY YOUR OWN ATTORNEY, ARCHITECT OR ZONING EXPERT. IF YOUR PROPERTY IS CURRENTLY LISTED WITH ANOTHER REAL ESTATE BROKER, PLEASE DISREGARD THIS OFFER. IT IS NOT OUR INTENTION TO SOLICIT THE OFFERS OF OTHER REAL ESTATE BROKERS. WE COOPERATE WITH THEM FULLY. EQUAL HOUSING OPPORTUNITY.

FLOOR PLAN



JESSICA ADAMS
AT DOUGLAS ELLIMAN REAL ESTATE



SECOND FLOOR



COME HOME TO LUXURY[®]

JASON ADAMS
Director of Luxury Sales
Sales Associate

M: 305.951.9489
O: 305.695.6060
jason.adams@elliman.com
comehometoluxury.com



1515 SUNSET DR # 10, CORAL GABLES, 33143, 305.695.6060. © 2024 DOUGLAS ELLIMAN REAL ESTATE. ALL MATERIAL PRESENTED HEREIN IS INTENDED FOR INFORMATION PURPOSES ONLY. WHILE, THIS INFORMATION IS BELIEVED TO BE CORRECT, IT IS REPRESENTED SUBJECT TO ERRORS, OMISSIONS, CHANGES OR WITHDRAWAL WITHOUT NOTICE. ALL PROPERTY INFORMATION, INCLUDING, BUT NOT LIMITED TO SQUARE FOOTAGE, ROOM COUNT, NUMBER OF BEDROOMS AND THE SCHOOL DISTRICT IN PROPERTY LISTINGS SHOULD BE VERIFIED BY YOUR OWN ATTORNEY, ARCHITECT OR ZONING EXPERT. IF YOUR PROPERTY IS CURRENTLY LISTED WITH ANOTHER REAL ESTATE BROKER, PLEASE DISREGARD THIS OFFER. IT IS NOT OUR INTENTION TO SOLICIT THE OFFERINGS OF OTHER REAL ESTATE BROKERS. WE COOPERATE WITH THEM FULLY. EQUAL HOUSING OPPORTUNITY.



COME HOME TO LUXURY[®]

JESSICA ADAMS
Senior Director of Luxury Sales
Sales Associate

M: 305.877.0212
O: 305.695.6060
jessica.adams@elliman.com
comehometoluxury.com



1515 SUNSET DR # 10, CORAL GABLES, 33143. 305.695.6060. © 2024 DOUGLAS ELLIMAN REAL ESTATE. ALL MATERIAL PRESENTED HEREIN IS INTENDED FOR INFORMATION PURPOSES ONLY. WHILE THIS INFORMATION IS BELIEVED TO BE CORRECT, IT IS REPRESENTED SUBJECT TO EFFORTS, OMISSIONS, CHANGES OR WITHDRAWAL WITHOUT NOTICE. ALL PROPERTY INFORMATION, INCLUDING, BUT NOT LIMITED TO SQUARE FOOTAGE, ROOM COUNT, NUMBER OF BEDROOMS AND THE SCHOOL DISTRICT IN PROPERTY LISTINGS SHOULD BE VERIFIED BY YOUR OWN ATTORNEY, ARCHITECT OR ZONING EXPERT. IF YOUR PROPERTY IS CURRENTLY LISTED WITH ANOTHER REAL ESTATE BROKER, PLEASE DISREGARD THIS OFFER. IT IS NOT OUR INTENTION TO SOLICIT THE OFFERINGS OF OTHER REAL ESTATE BROKERS. WE COOPERATE WITH THEM FULLY. EQUAL HOUSING OPPORTUNITY.





COME HOME TO LUXURY[®]

JASON ADAMS
Director of Luxury Sales
Sales Associate

M: 305.951.0489
O: 305.695.6060
jason.adams@elliman.com
comehometoluxury.com

 Douglas Elliman

1515 SUNSET DR # 10, CORAL GABLES, 33143. 305.695.6060. © 2024 DOUGLAS ELLIMAN REAL ESTATE. ALL MATERIAL PRESENTED HEREIN IS INTENDED FOR INFORMATION PURPOSES ONLY. WHILE, THIS INFORMATION IS BELIEVED TO BE CORRECT, IT IS REPRESENTED SUBJECT TO ERRORS, OMISSIONS, CHANGES OR WITHDRAWAL WITHOUT NOTICE. ALL PROPERTY INFORMATION, INCLUDING, BUT NOT LIMITED TO SQUARE FOOTAGE, ROOM COUNT, NUMBER OF BEDROOMS AND THE SCHOOL DISTRICT IN PROPERTY LISTINGS SHOULD BE VERIFIED BY YOUR OWN ATTORNEY, ARCHITECT OR ZONING EXPERT. IF YOUR PROPERTY IS CURRENTLY LISTED WITH ANOTHER REAL ESTATE BROKER, PLEASE DISREGARD THIS OFFER. IT IS NOT OUR INTENTION TO SOLICIT THE OFFERINGS OF OTHER REAL ESTATE BROKERS. WE COOPERATE WITH THEM FULLY. EQUAL HOUSING OPPORTUNITY.

