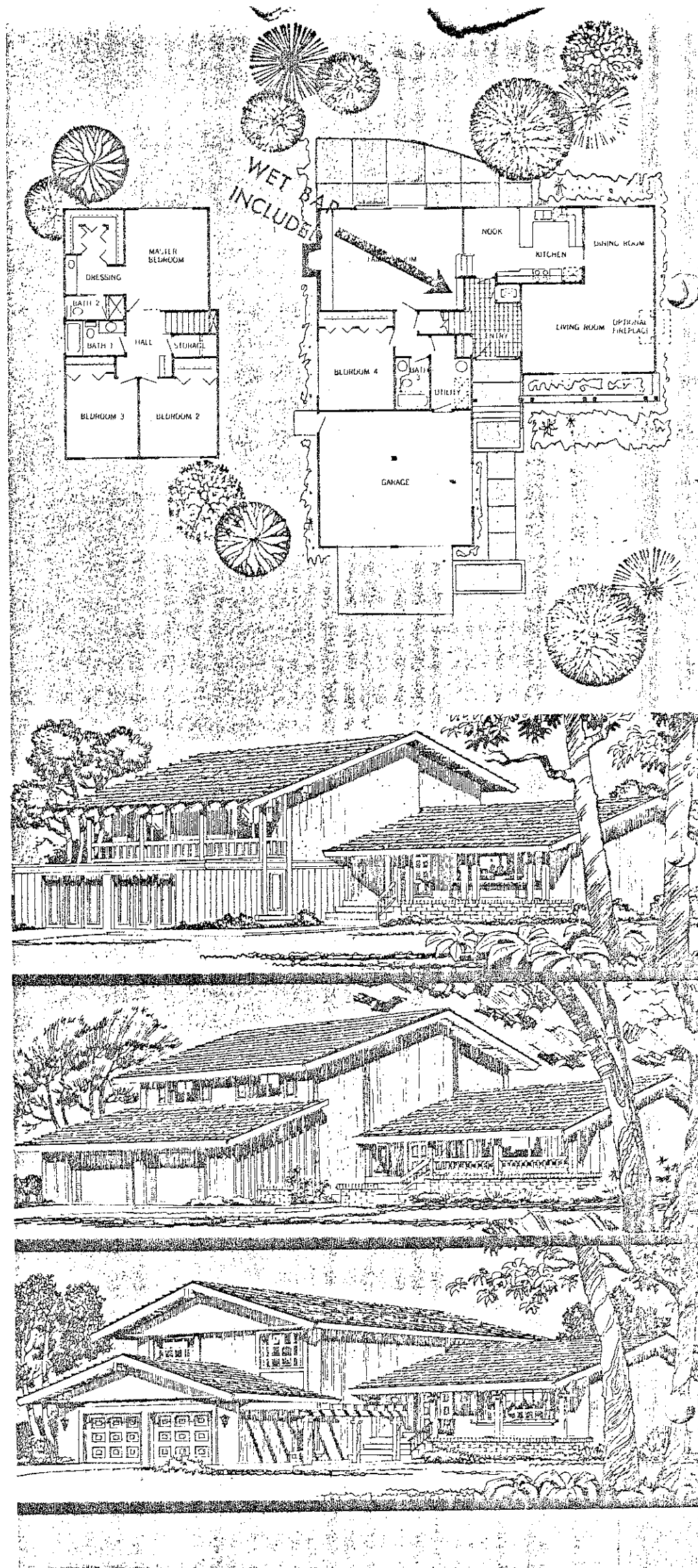


# the granada plan 8624

(No model home shown)



4 bedrooms, 3 baths  
living area: 2190 sq. ft.

An expanded, even roomier, version of our popular Madrid tri-level home — now with a fourth bedroom and complete bath off the family room. Makes a wonderfully private suite for the teenager or grandparent, or a perfect guest room arrangement.

This home has the same wide-open feeling throughout the kitchen, dining nook and family room and the same delightful separation of formal entertainment areas as our three bedroom model . . . and the rooms are just as large. The master bedroom suite has the same double door entrance and the same luxurious dressing area with its separate alcove of wardrobe closets. And don't overlook the convenience of the indoor laundry/utility room.

Each of these tri-level homes have their own all-new exterior designs with an exciting use of rough sawn and stained wood trim plus an interesting use of masonry detail.

DOUG BUENZ

THE 680 GROUP

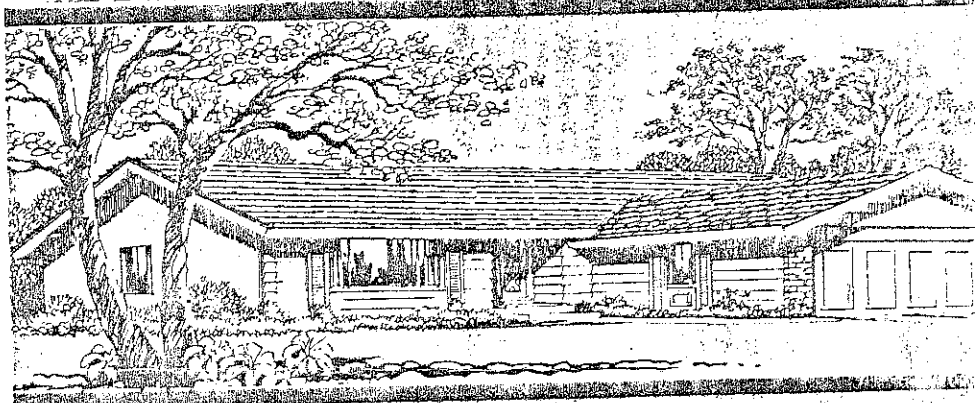
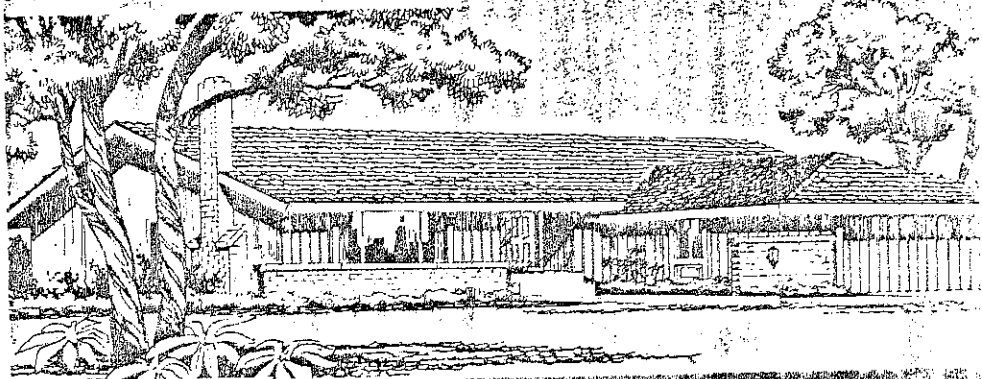
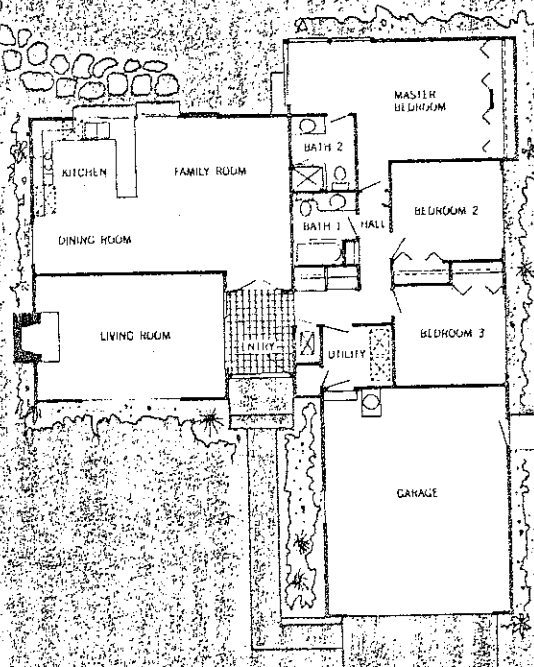
the  
valencia  
plan 8703

3 bedrooms, 2 baths  
living area: 1550 sq. ft.

For indoor/outdoor living from the day you move in! Terrace kitchen and spacious family room overlook the patio and garden area that's just waiting to be enjoyed. And because we know it will be such a popular place for entertaining, we have added a serving counter that opens right out from the kitchen for the greatest convenience ever!

You step down into a dramatically styled living room from the ceramic tiled entry hall. A handsome Mexican brick fireplace extending the height of the room and a vaulted ceiling give added dimensions of space and luxury.

Master bedroom has a whole wall of wardrobe closets with folding louver-styled doors plus a window-lined solarium alcove that will bring your garden right into the room. Other features include an interior utility room and a great "bonus storage closet."





DOUG BUENZ

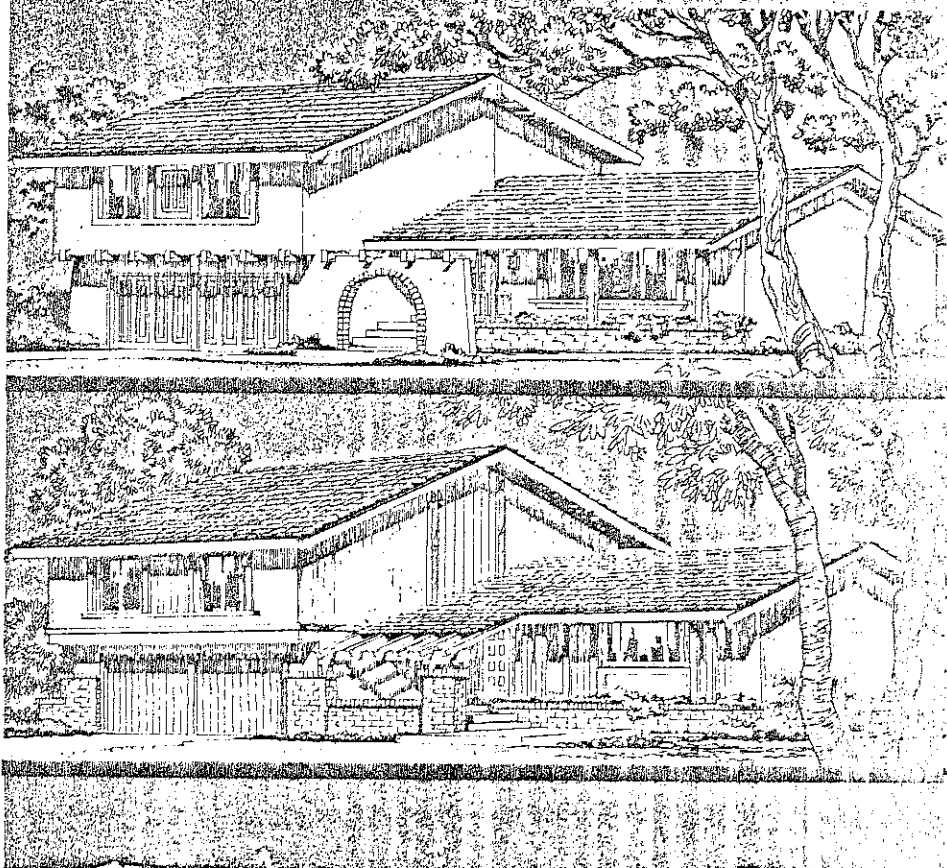
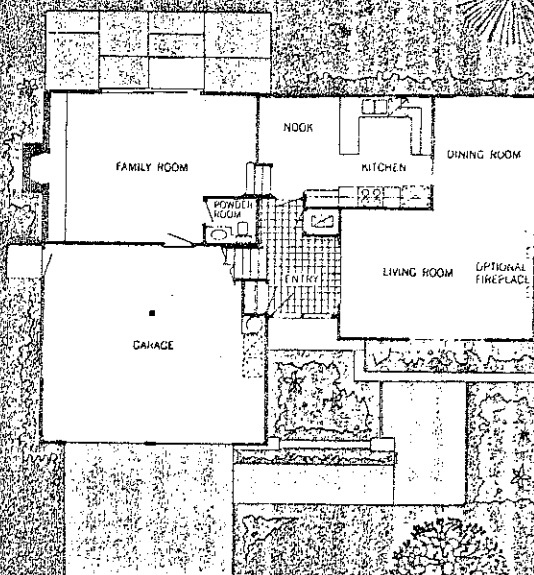
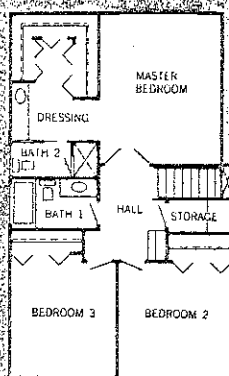
THE 680 GROUP

# the madrid plan 8623

3 bedrooms, 2½ baths  
living area: 1870 sq. ft.

Handsome raised-panel double doors open onto the ceramic tiled central entry of this spacious three-bedroom, tri-level home. Every detail emphasizes its roominess. Vaulted-ceiling living room and formal dining room are set apart in quiet dignity leaving the rest of this big home for casual family living . . . with almost 40 feet of unobstructed space from the kitchen door, through the breakfast area and down to the sunken family room with its wall-to-wall raised-hearth fireplace and attractive beamed ceiling. A powder room is conveniently adjacent.

Upstairs the master suite is entered through luxurious double doors. A roomy walk-in wardrobe alcove with "open-wide" bifold doors is located just off the spacious dressing area. A six-foot dressing vanity/wash basin combination with a mirror running the full length of the wall above. A brilliant luminous ceiling completes this wonderful suite.





# the seville plan 8804

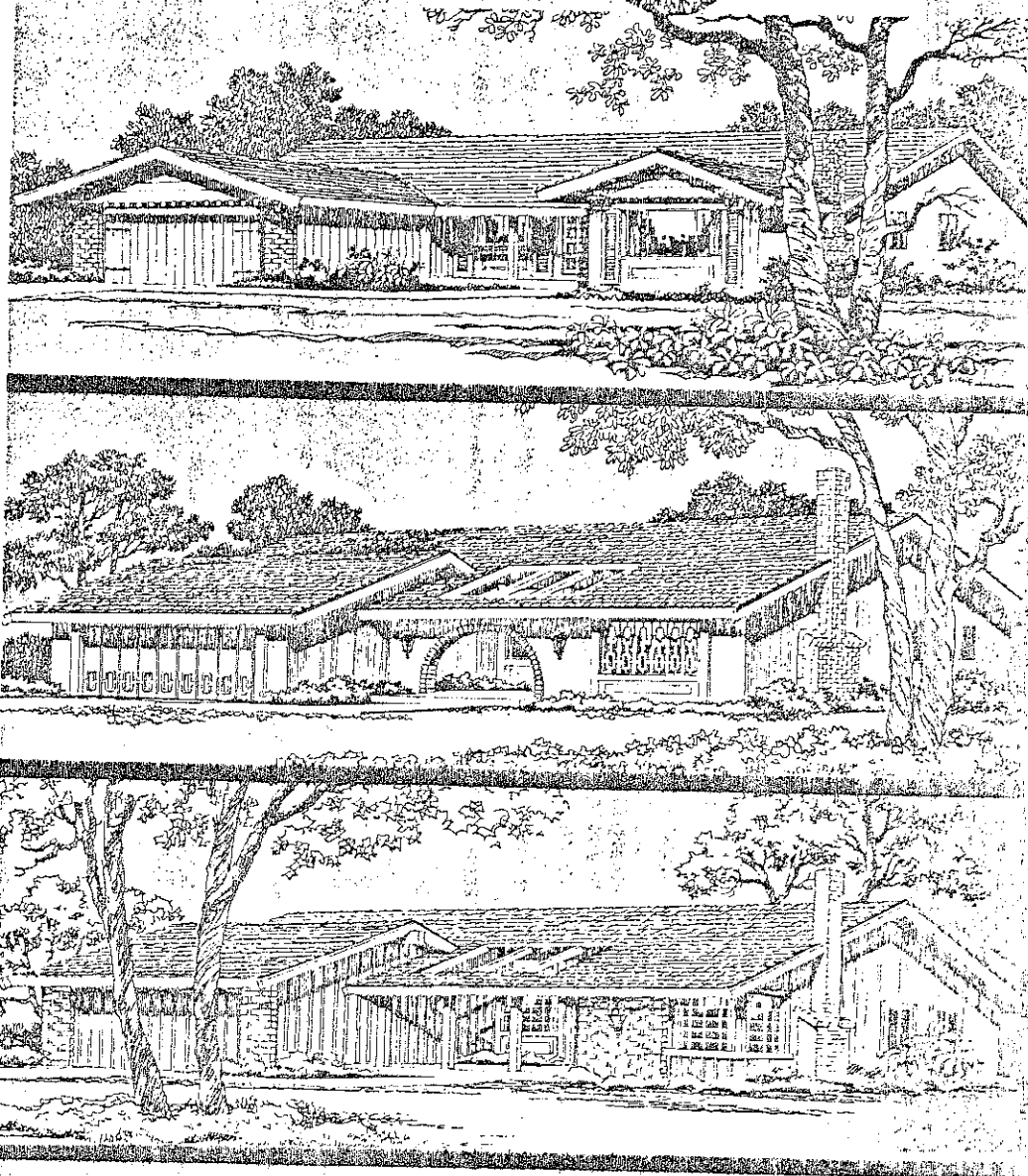
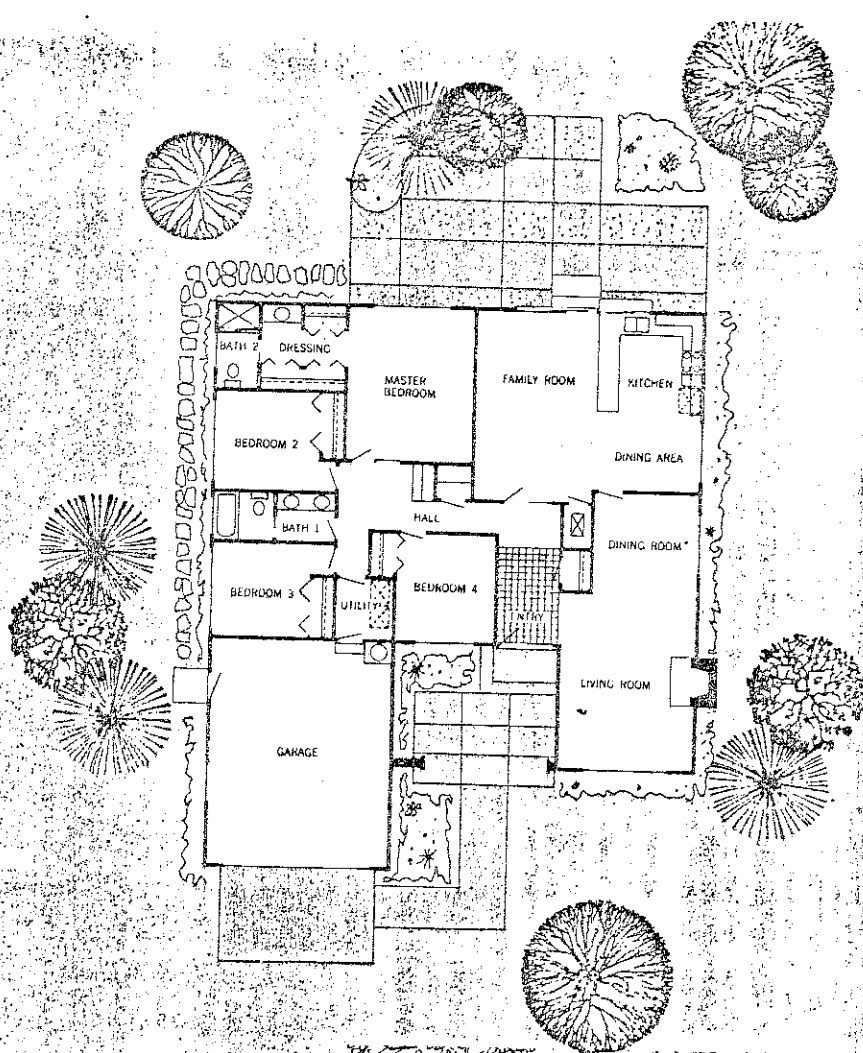
4 bedrooms, 2 baths  
living area: 1925 sq. ft.

Dramatic exteriors in American Traditional, Spanish, or Contemporary stylings, give this lovely home a true custom appearance.

The interior is just as exciting — four great bedrooms including a master suite with a closet-lined dressing room and a compartmented bath unit. The family bathroom down the hall is compartmented with a double basin/vanity in the dressing area. The utility room is conveniently located in the bedroom wing.

Formal step-down living room has exciting vaulted ceiling and a handsome Mexican brick fireplace that extends the entire height of the room—an elegant detail. Formal dining room opens from this lovely living room and is located adjacent to the kitchen serving area for greatest hostess convenience.

The light, bright and airy sunshine kitchen opens onto an equally bright breakfast nook and family room. Patio pass-thru window and terrace serving counter make the outdoors and the indoors one big world.





DOUG BUENZ  
Monterey GROUP

plan 8924-8925

plan 8924

4 bedrooms and retreat, 2½ baths

plan 8925 (No model home shown)

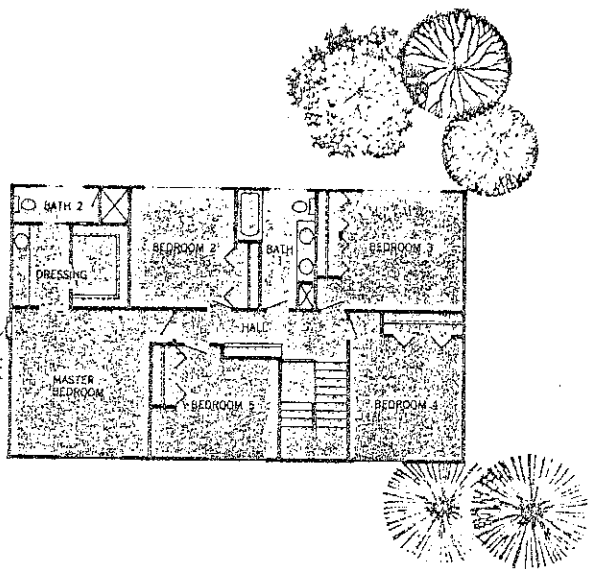
5 bedrooms, 2½ baths

living area: 2506 sq. ft.

Massive 30-panel double doors open onto a ceramic tiled central entry that in turn leads to the sunken formal living room. Adjacent to a spacious kitchen is a most pleasant breakfast area that is separated from the family room by a wrought iron railing . . . giving an added dimension of even more space.

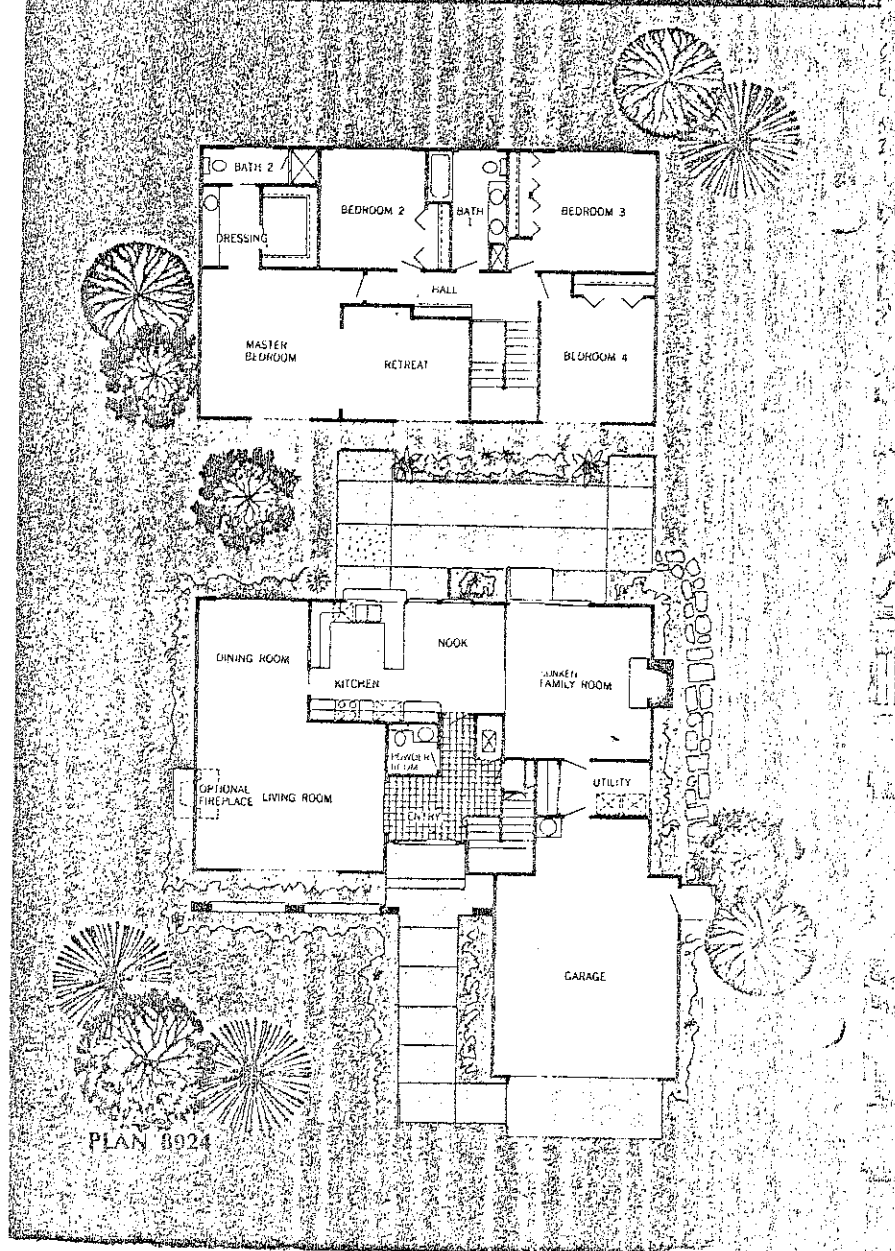
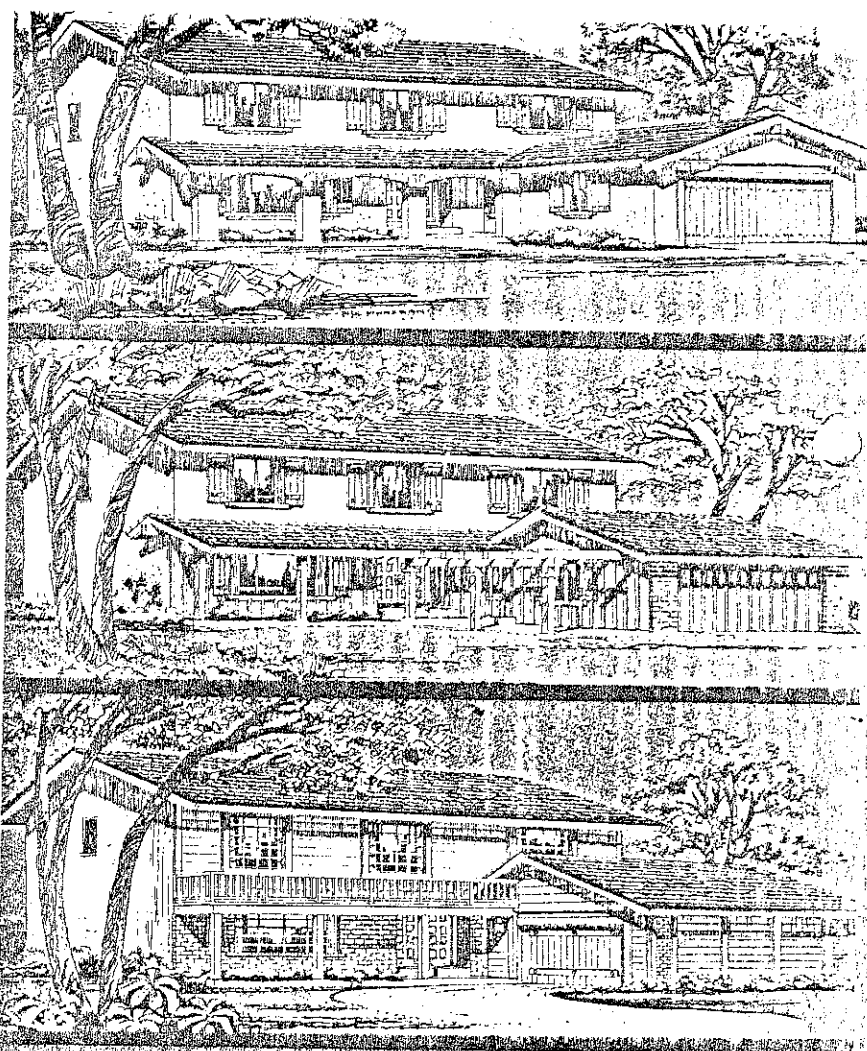
Master suite has huge walk-in closet plus a dressing vanity-basin unit with a mirror wall extending the entire length of the dressing room. Family bath has double basin with vanity and is conveniently located for efficient family use on hurried mornings.

For those who do not require five bedrooms, a delightful "retreat" has been included in the master suite making it more luxurious than ever. This quiet, private sitting room or den is a true gem . . . secluded in a world all its own.



PLAN 8925. Second story with fifth bedroom replacing the Retreat of the 8924 model. Plan of first floor is identical in both homes.

N 8925



PLAN 8924



DOUG BUENZ  
THE 680 GROUP

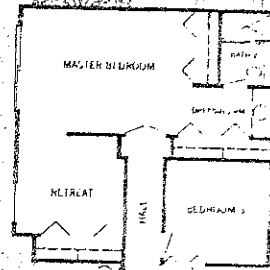
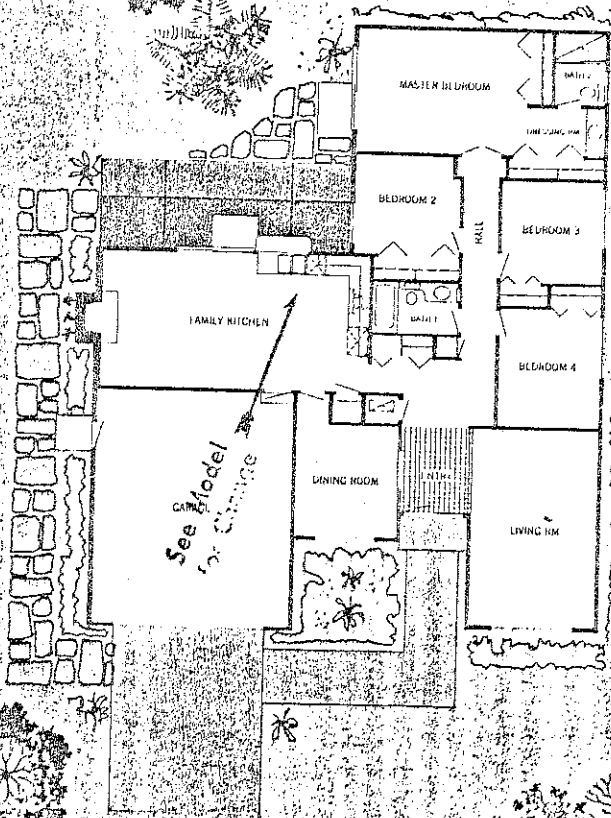
# the carmel plan 9104

4 bedrooms, 2 baths  
or 3 bedrooms plus retreat  
living area: 1790 sq. ft.

This delightful plan offers everything that today's family really wants in a home—and all at a surprisingly affordable price. Tiled central entry foyer, separate formal dining room, a sunny, open kitchen with plenty of extra storage space (including a 5-shelf pantry), and a great family room with handsome wall-to-wall used brick fireplace.

The formal living and dining areas of the home are nicely separated from the more casual kitchen and family room which open onto the sheltered patio and garden area. The kitchen includes the popular patio serving shelf that makes indoor-outdoor living such a pleasure.

The Carmel is available as either a 4-bedroom plan or as a 3-bedroom home with a quiet hideaway retreat completing the master bedroom suite. In either the 3- or 4-bedroom version, the master bedroom suite opens onto the garden area through sliding glass doors.



Alternate  
3-bedroom plan  
with retreat.

