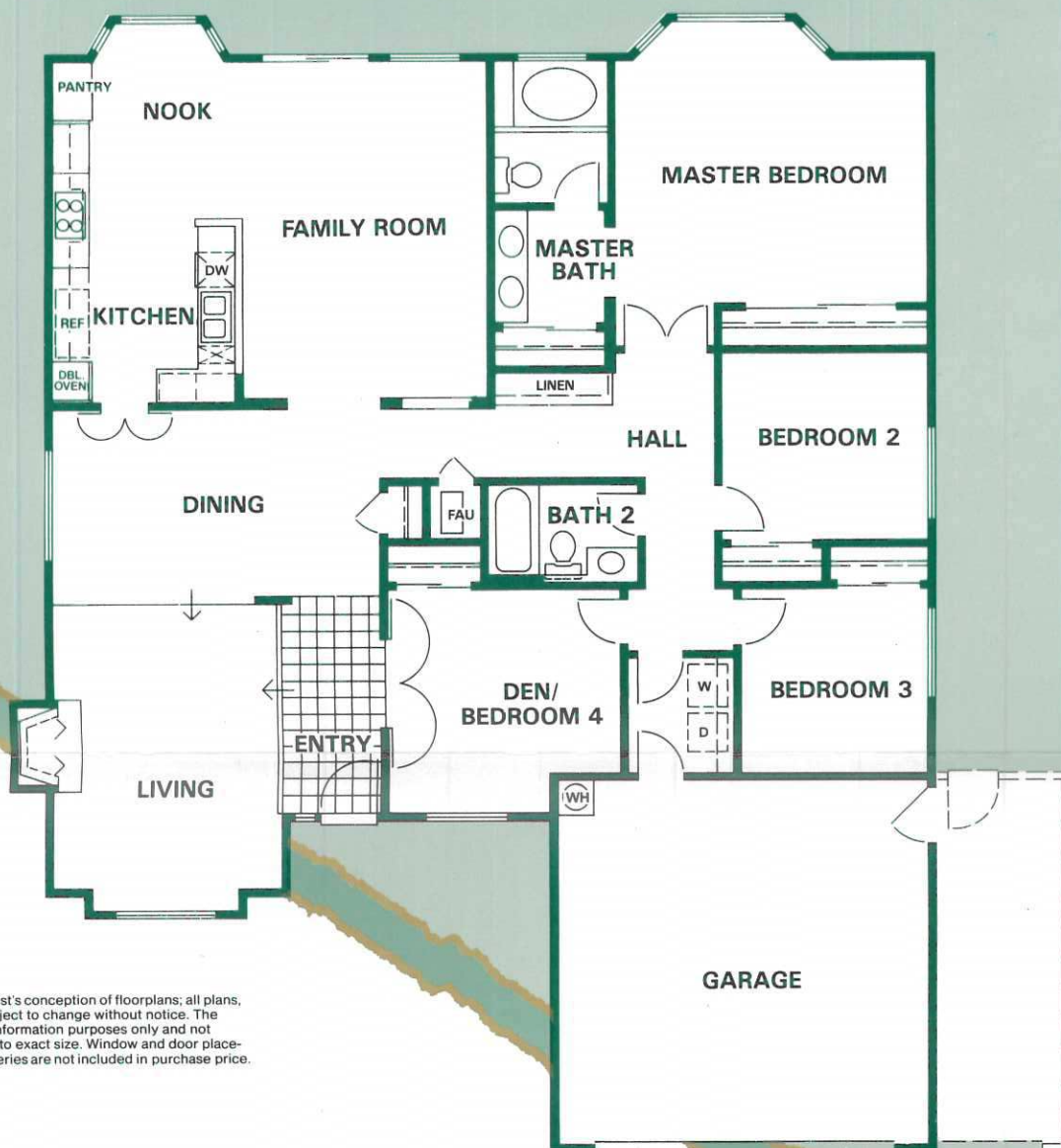


Plan 2012

The Alameda II

4 Bedrooms • 2 Baths • Single Story Home • 2,012 Square Feet

DOUG BUENZ
& THE 680 GROUP



Small square footage is approximate. Artist's conception of floorplans; all plans, features and specifications are subject to change without notice. The floorplans and renderings are for information purposes only and not intended to be a representation as to exact size. Window and door placement may vary with elevation, draperies are not included in purchase price.

This lovely home offers spaciousness, style and charm all in a single story.

The formal, sunken living room, complete with fireplace, opens onto a large, formal dining room, ideal for entertaining.

The openness of the family room and country kitchen brings to mind the "great room" of days past, where family gatherings and mealtimes were special events as they are today.

Down the hall double doors open onto a spacious master bedroom suite. The large bay window, double closets and private dressing and bath area make this room a wonderful place to relax.

Located around a central bath, are three secondary bedrooms, one of which can be converted to a den for that convenient "at home office."

The interior laundry completes the Alameda II.

Once you experience this home you'll see the attention to detail and design that are hallmarks of a Ponderosa home.



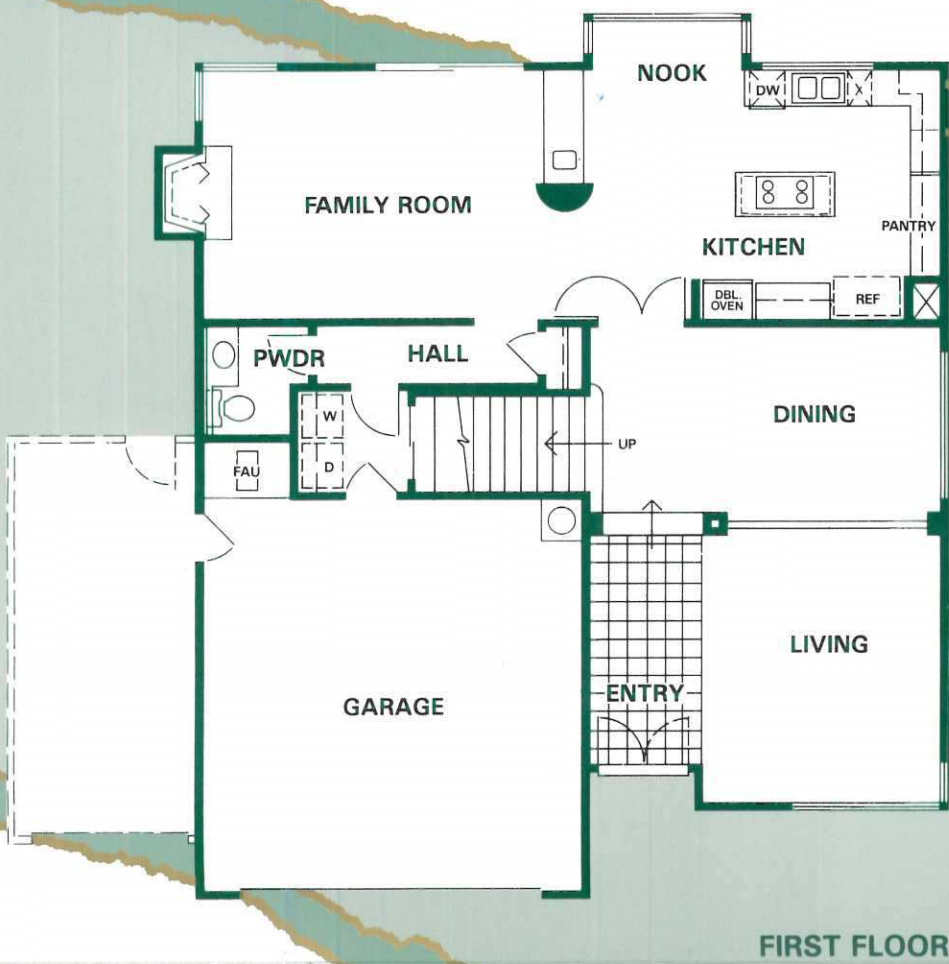
Country Fair II

Plan 2391

The Solano II

4 Bedrooms • 2½ Baths • Two Story Home • 2,391 Square Feet

DOUG BUENZ
& THE 680 GROUP



FIRST FLOOR



SECOND FLOOR

Small text disclaimer: Square footage is approximate. Artist's conception of floorplans; all plans, features and specifications are subject to change without notice. The floorplans and renderings are for information purposes only and not intended to be a representation as to exact size. Window and door placement may vary with elevation; draperies are not included in purchase price.

Step in to the Solano II and you've stepped in to a home of the '90's.

The raised entry and formal living room look down over a distinctive formal dining room framed with floor to ceiling columns and a dropped beam.

Double doors open into the kitchen and family room. Distinct architectural detailing is apparent in the rounded wall of the wetbar, separating these two rooms. The spacious kitchen and nook area, complete with island cooktop and double ovens beckons the gourmet cook or the person on the go. In the family room, the centrally located brick-faced fireplace dominates the room, while indoor/outdoor living is made easy with the large sliding glass door opening onto the patio area.

Upstairs is no less spectacular in this home. The large master bedroom suite with double-wide walk-in closet, vaulted ceiling and private dressing and bath area is located to provide maximum privacy and convenience.

The three additional bedrooms, just off the generous landing are grouped around a spacious hall bath.

Just right for today's family of the '90's, the Solano II is an exciting living experience.

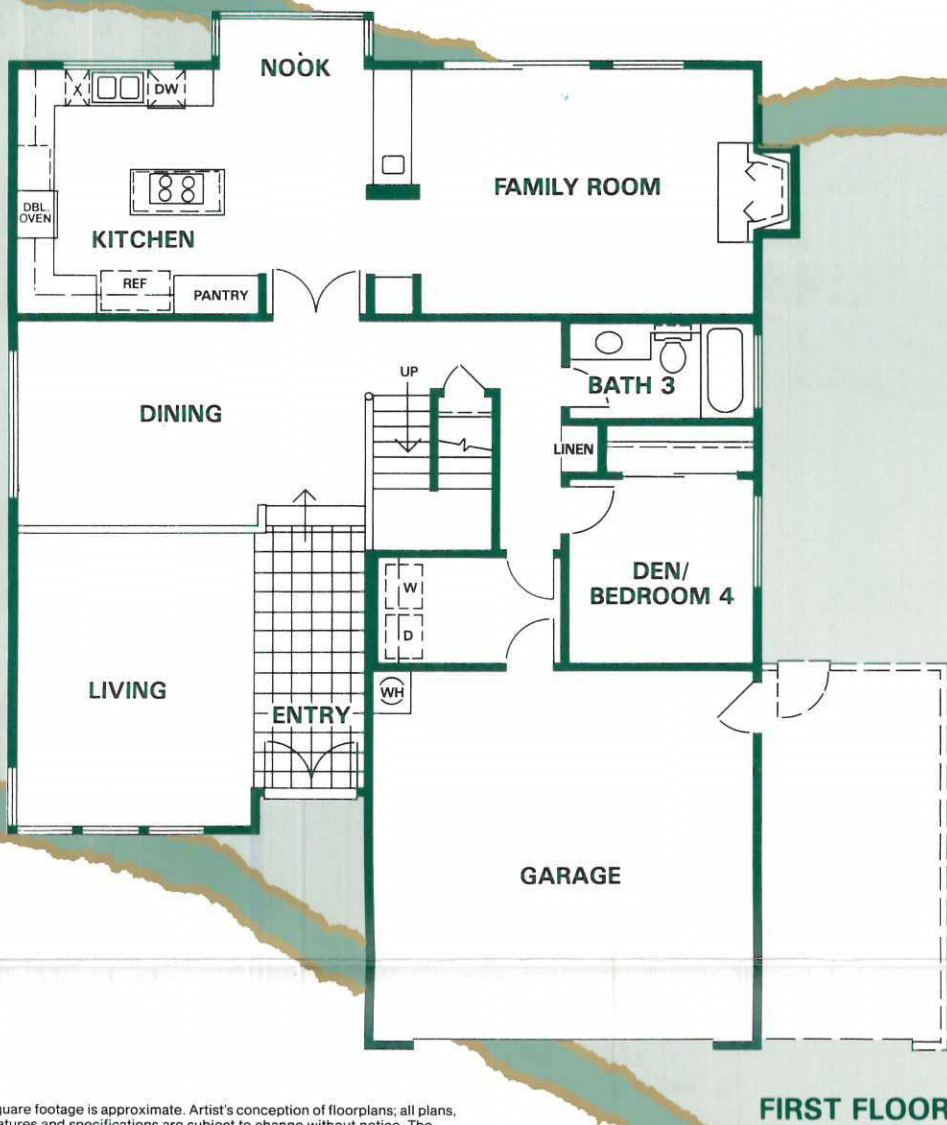


Plan 2575

The Tulare II

4 Bedrooms • 3 Baths • Two Story Home • 2,575 Square Feet

DOUG BUENZ
& THE 680 GROUP



FIRST FLOOR

Square footage is approximate. Artist's conception of floorplans; all plans, features and specifications are subject to change without notice. The floorplans and renderings are for information purposes only and not intended to be a representation as to exact size. Window and door placement may vary with elevation; draperies are not included in purchase price.



SECOND FLOOR

From the moment you set foot in the Tulare II you know you have stepped into a home of grace and elegance.

The expansive formal living room overlooks the sunken dining room providing an excellent area for formal entertaining.

Equally well planned are the informal living areas of the Tulare II. The kitchen, complete with island cooktop and bay window nook is ideal for preparing a quick snack or a complete gourmet dinner. Separating the gourmet kitchen and family room is a specially designed wetbar which allows ease of entertaining from either the kitchen or family room side. The family room is additionally enhanced by the centrally located brick-faced fireplace.

The conveniently located downstairs bedroom and bath provides maximum privacy and convenience for your overnight guests.

Upstairs the elegant mastersuite is your retreat from the everyday world. The master bath is breathtaking with its double vanity, separate dressing table, oversized shower and elegant oval tub.

Two additional, spacious secondary bedrooms and an additional bath complete the second floor of the Tulare II.

You'll agree that the 2,575 square feet of the Tulare II shows, once again, Ponderosa's attention to fine floorplan design. The Tulare II, a home designed with today's family in mind.



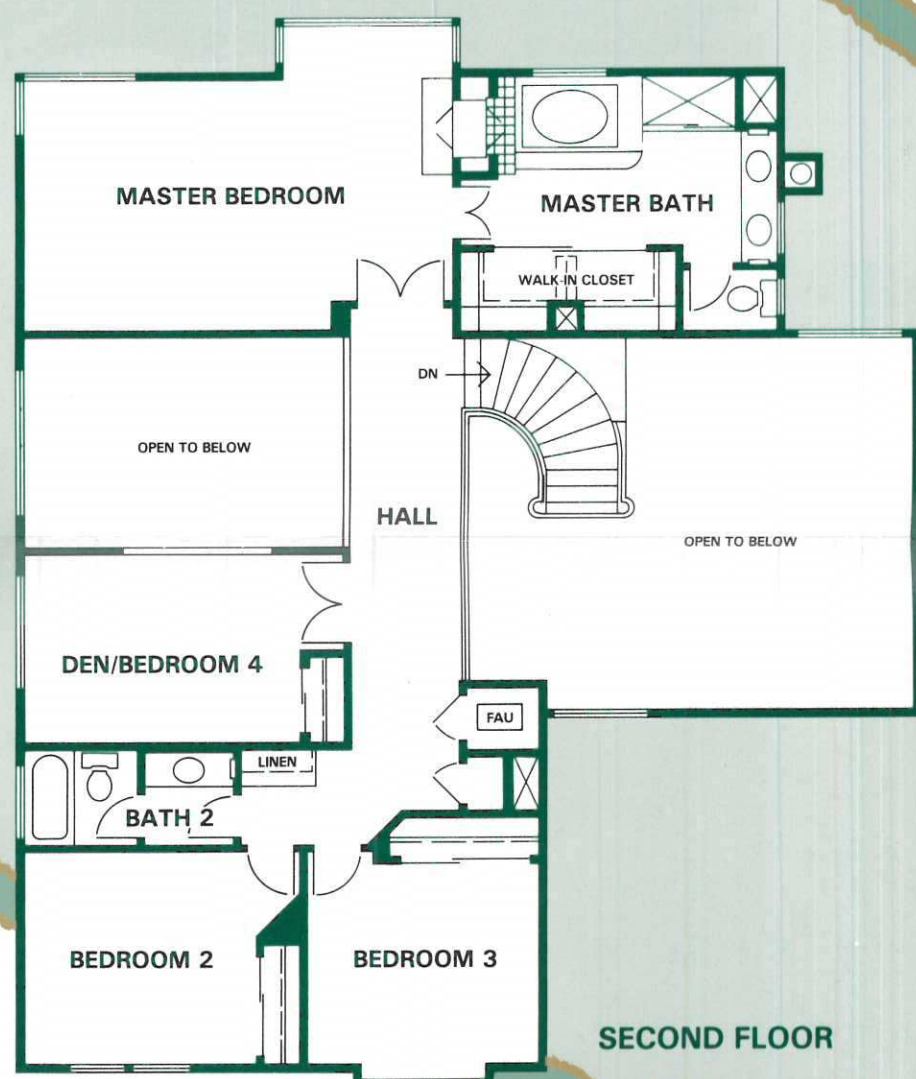
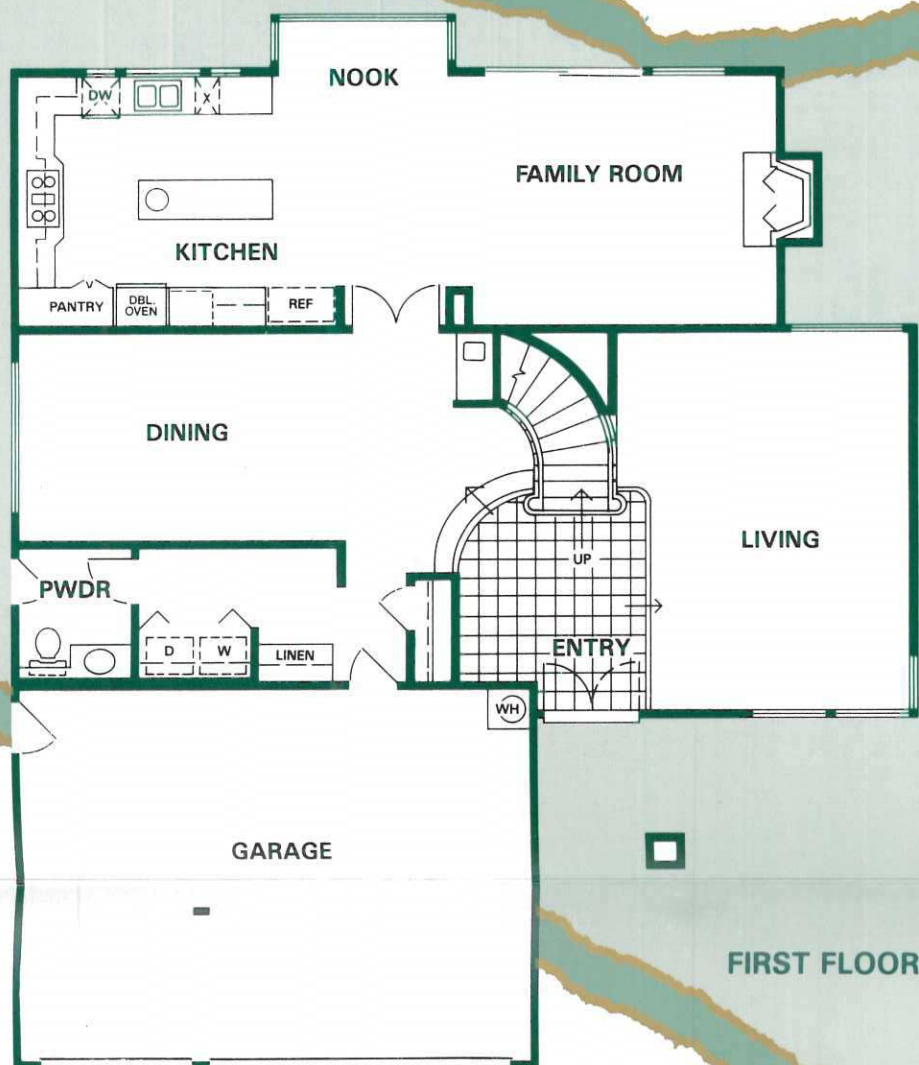
Country Fair II

Plan 2982

The Trinity II

4 Bedrooms • 2½ Baths • Two Story Home • 2,982 Square Feet

DOUG BUENZ
& THE 680 GROUP



Small text disclaimer: Square footage is approximate. Artist's conception of floorplans; all plans, features and specifications are subject to change without notice. The floorplans and renderings are for information purposes only and not intended to be a representation as to exact size. Window and door placement may vary with elevation; draperies are not included in purchase price.

Drama and grace combine to make the Trinity II a distinctively classical home.

The expansive raised entry and dramatic curved stairway separate the formal living and dining rooms. High-volumed ceilings and a wetbar in the dining room enhance the grandeur of these two rooms.

Not to be outdone, the kitchen and family room offer their own brand of drama. Ample cabinet space and double ovens are only two features of this exciting kitchen. The unique island is complete with sink, disposal, cabinets and counter space. Just right for chatting with family members or friends, the spacious window-framed nook and large family room, complete with fireplace, are inviting and appealing.

Upstairs the landing doubles as a bridge overlooking the living room and dining room below. To the right, double doors open onto a luxurious master bedroom suite. Truly a haven, the master bedroom is spacious with numerous

windows and the focal point, a double, marble-faced fireplace with rich oak mantel which is also enjoyed from the master bath. Stepping into the master bath, the height of luxury is apparent with the step-up, sunken oval tub, large separate shower and double-wide walk-in closet.

Down the hall, secondary bedrooms surround a conveniently located bath and linen cabinet.

This grandly designed home offers distinctive and separate formal living and family areas. The Trinity II is truly a home to be proud of.



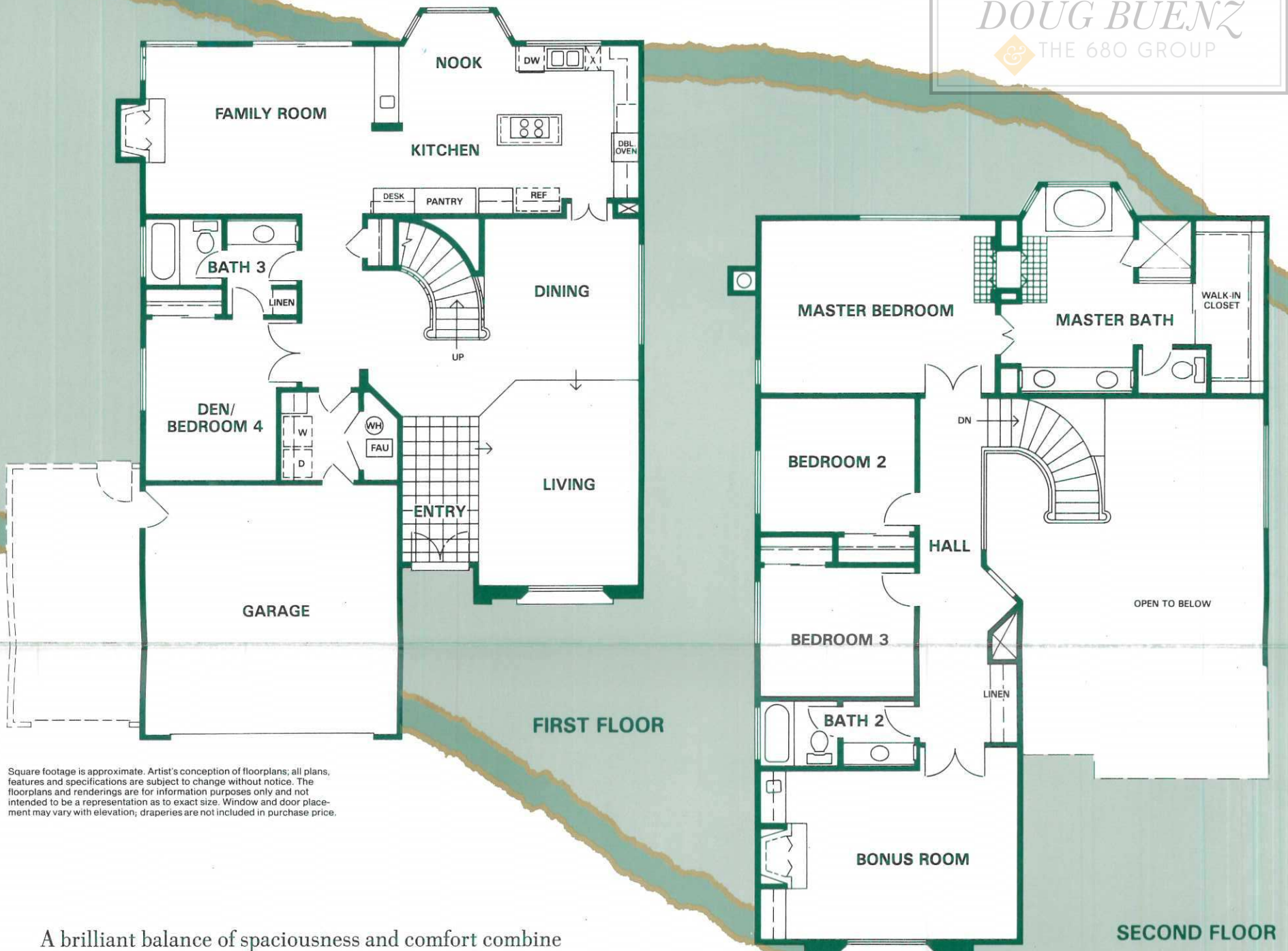
Country Fair II

Plan 2991

The Amador II

4 Bedrooms • 3 Baths • Two Story Home • 2,991 Square Feet

DOUG BUENZ
& THE 680 GROUP



Small text disclaimer: Square footage is approximate. Artist's conception of floorplans; all plans, features and specifications are subject to change without notice. The floorplans and renderings are for information purposes only and not intended to be a representation as to exact size. Window and door placement may vary with elevation; draperies are not included in purchase price.

A brilliant balance of spaciousness and comfort combine to make the Amador II a home to be proud of.

The luxurious formal living and dining rooms are enhanced by the graceful, curved stairway with its oak railing and turned balustrades.

A sensitivity to the needs of family is seen in the spacious and comfortable kitchen and family room. Ample storage, a central cooking island and large bay window nook are only a few of the features designed with today's family in mind. The warmth of the brick-faced fireplace highlights the family room and invites cozy family gatherings.

The downstairs bedroom and bath can fill many needs, an "at home office," comfortable space for overnight guests, or just the right place for the older child, to name just a few.

Upstairs the mastersuite is unusually luxurious. Vaulted ceilings, a double-sided fireplace, a large oval tub set in a bay window and separate shower are only a few of the features that create this exciting retreat from the outside world.

Two secondary bedrooms, a secondary bath and ample linen space are ideal for a growing family.

To complete the upstairs is the exciting bonus room with brick-faced fireplace, wetbar and built-in oak cabinetry. An ideal place for family and friends.

Style, grace and comfort, all hallmarks of a Ponderosa home are evident throughout the 2,991 square feet of the Amador II. Come home to Country Fair II, make the Amador II your home today.



Country Fair II