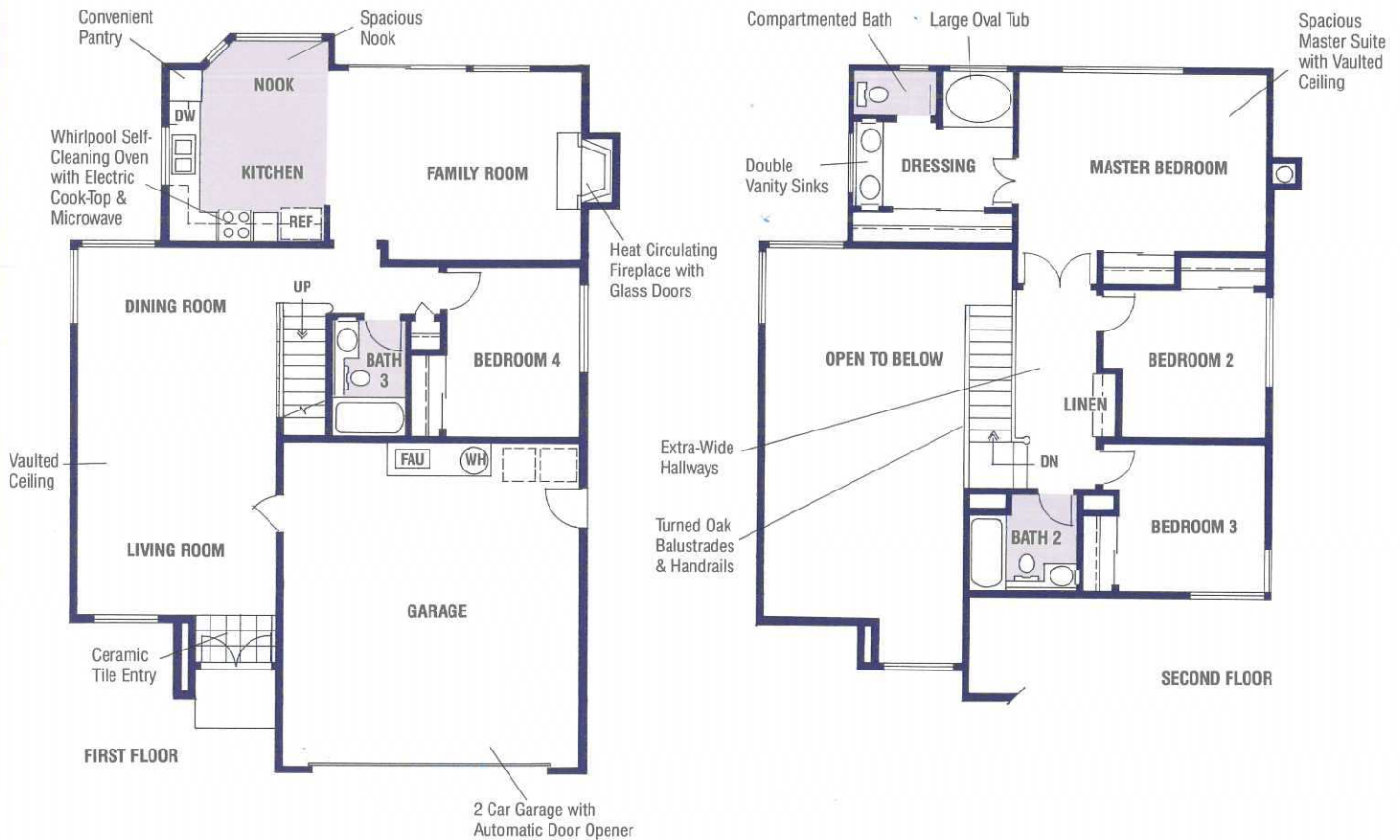


The Redwood Plan 1834

4 Bedrooms  3 Baths  2 Story Home  1,834 Square Feet



The Redwood greets you with vaulted ceilings, tile entry and a feeling of elegance which continues through the formal dining area graced by picture windows. This classic home offers the kind of stylish appointments and luxury that spells out 'the good life.'

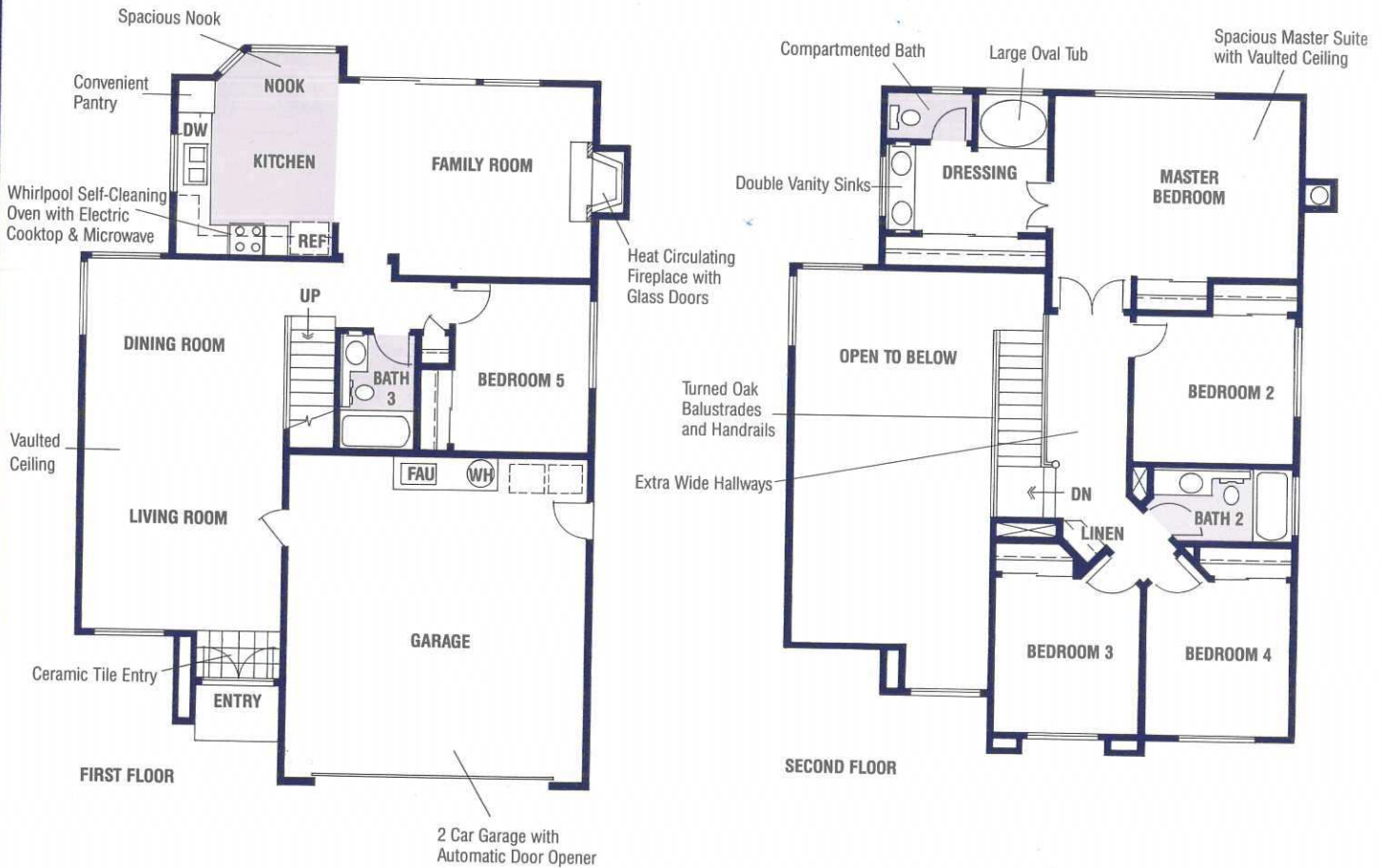
A spacious breakfast nook and furniture finished cabinetry set off the gourmet kitchen that includes a thoughtfully provided pantry. A heat circulating woodburning fireplace is the center of attention in the adjacent spacious family room. A generous guest room with full bath is also conveniently located downstairs.

As you move upstairs, you'll notice an abundance of storage space and extra wide hallways. At one end of the hall you'll encounter two ample bedrooms and a full bath with decorator selected fixtures. At the other end, regal double-doors welcome you to the dramatic master bedroom suite. The extra-large bedroom area opens onto a spacious dressing area with extensive closet space with mirrored doors, dual vanities, compartmented bath, and a luxurious oval soaker tub.

For those who value craftsmanship as much as comfort, the Redwood is not only a statement of the quality you deserve, but of your own good taste.

The Sequoia Plan 2003

5 Bedrooms  3 Baths  2 Story Home  2,003 Square Feet



Step into the tile entry and majestic vaulted ceilings of the Sequoia. Continue through the elegant formal dining area with picture windows and into the expansive gourmet kitchen. Here you'll find a roomy breakfast nook, furniture-finished cabinetry and a convenient pantry. Look around and see the heat-circulating wood burning fireplace — the focal point of the large adjoining family room. On this level, there is also a cozy guest room and separate full bath.

Upstairs you'll meet with extra wide hallways and plentiful storage space. Three generous bedrooms and a complete

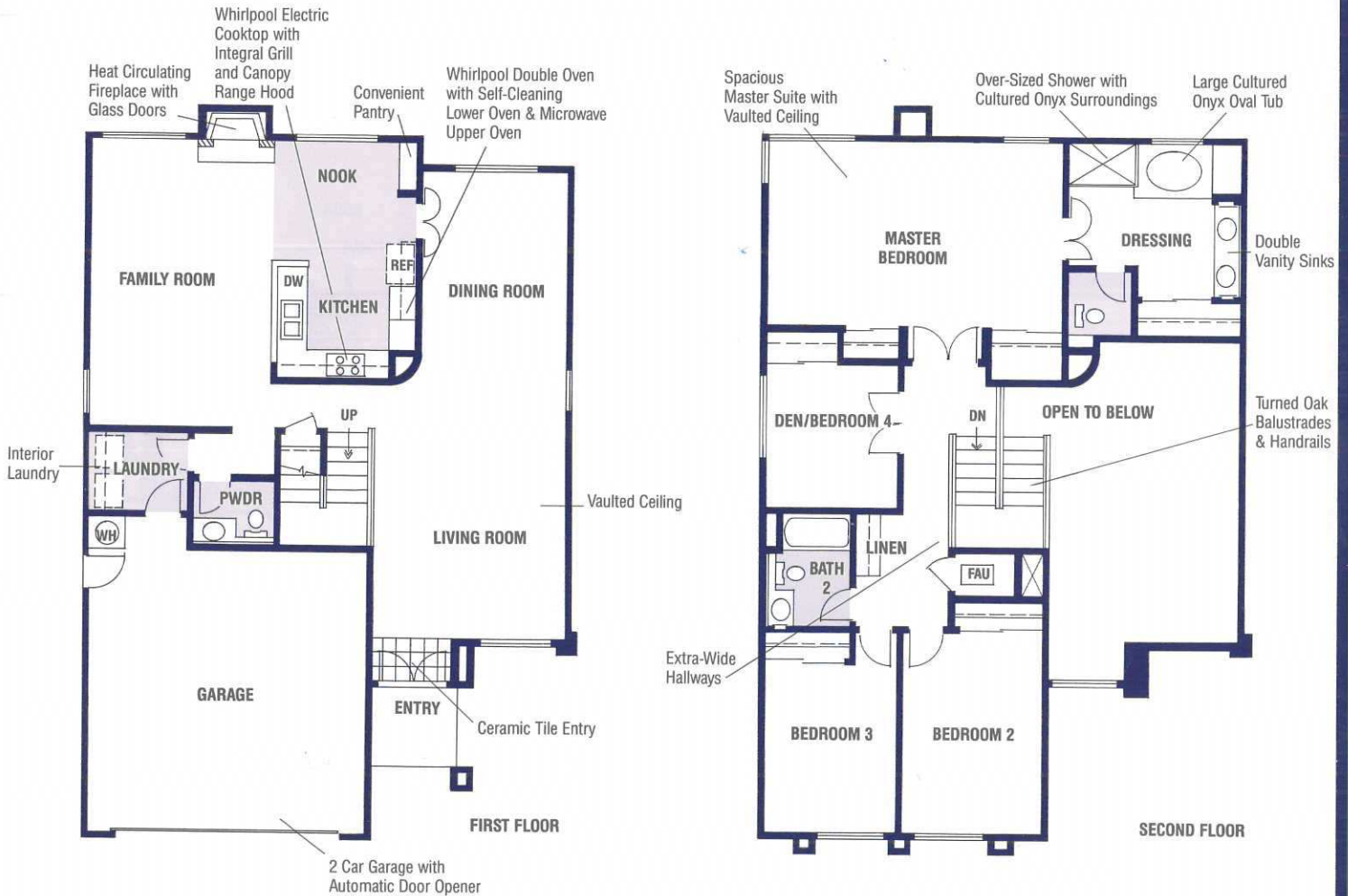
bath with decorator selected fixtures comprise one end of the hall.

At the other end, enter the master bedroom suite through stately double doors. Note the abundant closet space, the double vanity and the welcoming oval soaker tub in the extra-large dressing area.

Attention to detail and harmonious design is apparent throughout this classic home. Living in the Sequoia with its elegant appointments and craftsmanship combines the quality and the luxury you demand.

The Tilden Plan 2292

4 Bedrooms  2½ Baths  2 Story Home  2,292 Square Feet



Spaciousness, craftsmanship, and livability combine gracefully in the Tilden. As you enter, you are greeted by a vaulted ceiling in the living room and an unusual curved wall that leads you into the formal dining area.

The open design of the kitchen and gracious family room recalls the 'great room' of by-gone days — a perfect setting for informal gatherings. The centrally located fireplace with brick face can be readily enjoyed from either the kitchen-nook area or from the family room. The ample design leaves plenty of room for hobbies, crafts, or game tables. The kitchen beautifully masters the blending of function and space. Around the corner is a separate laundry room and

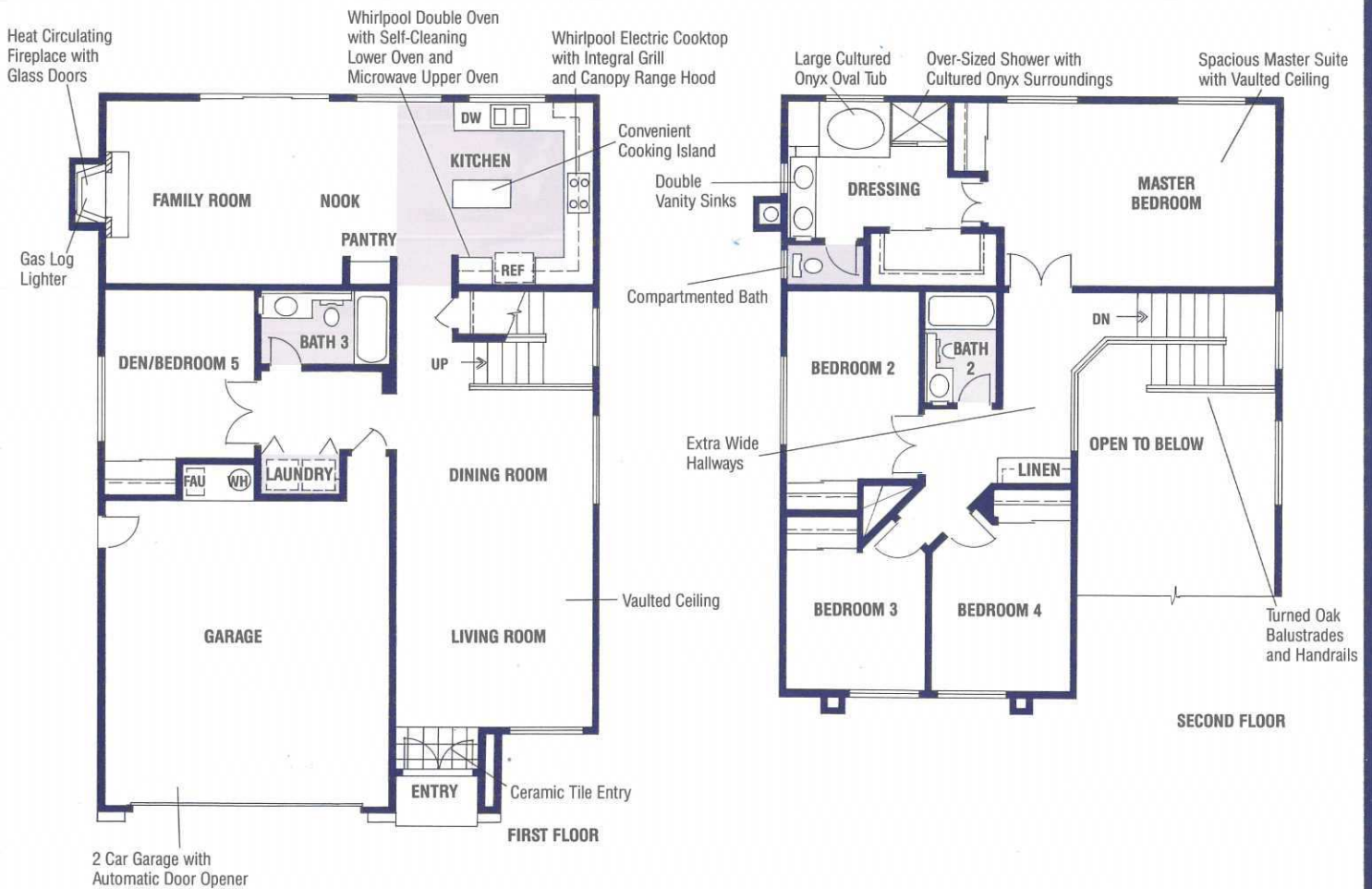
a convenient powder room.

On the second level, three secondary bedrooms are clustered around a full bath off the extra-wide hallway. A breath-taking master suite with vaulted ceilings awaits at the opposite end of the hall. Open the gracious double doors to an over-sized private haven flanked by two closets and enter the spacious dressing area with additional closet space, dual vanities, an extra-large shower and separate cultured onyx oval tub.

With quality amenities and superb styling the Tilden is truly a home of which to be proud.

The Chabot Plan 2298

5 Bedrooms  3 Baths  2 Story Home  2,298 Square Feet



The gleaming tile entry of the Chabot opens onto a spacious living room with soaring vaulted ceilings. The elegant feeling continues in the formal dining area accented by a handsome picture window.

A gourmet kitchen with wood cabinetry, luminous ceiling and a wealth of appliances, features a handy tile center island, sure to please the most discriminating taste. Just off the kitchen is the breakfast nook and the family room with a cheerful fireplace as the center of attention — a perfect place for family evenings or informal get-togethers. Completing the downstairs is a comfortable guest room and full bath for your entertaining convenience.

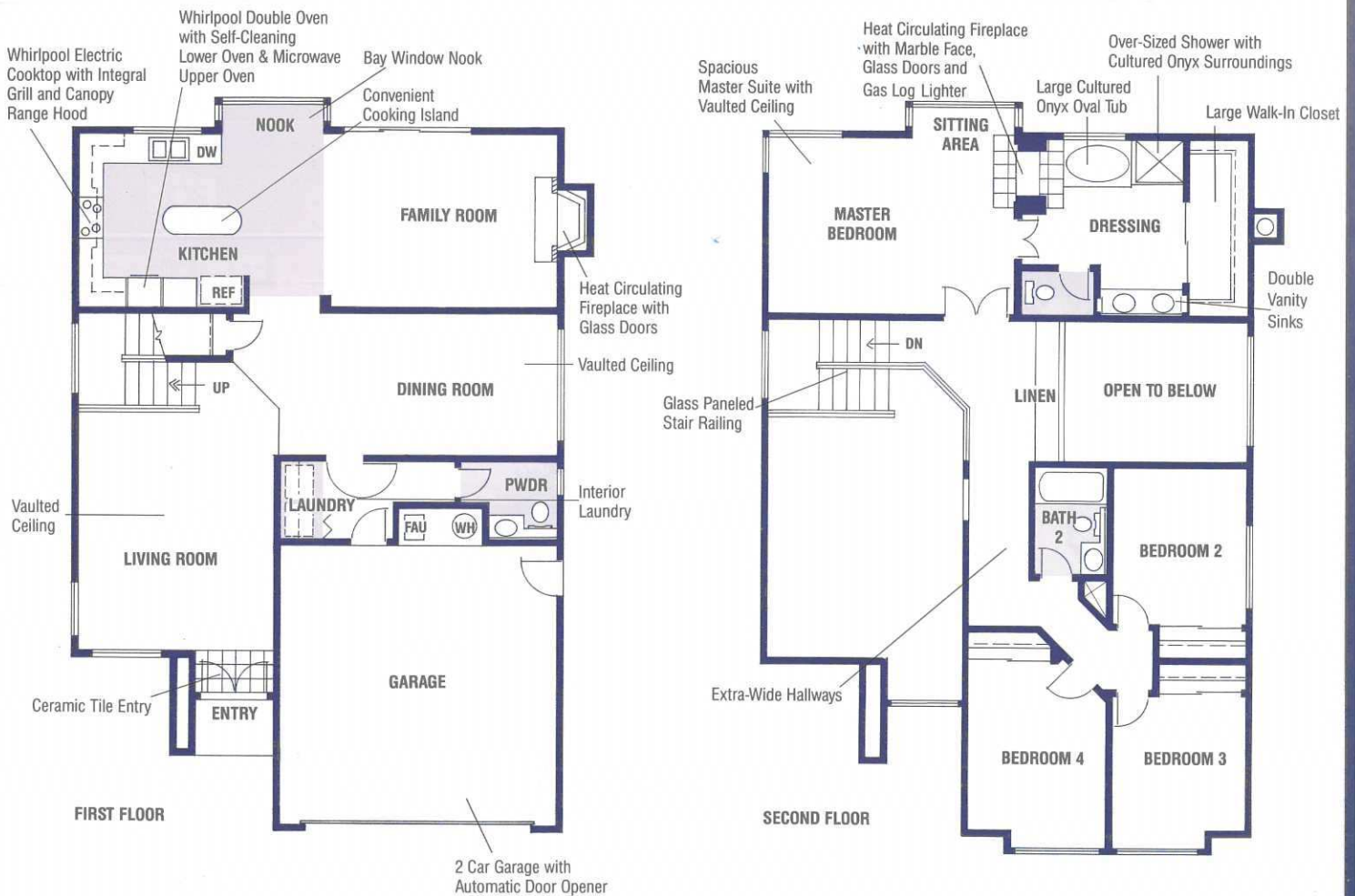
Three additional bedrooms on the second level are grouped around the centrally located second bath and linen closet.

A grand master suite with vaulted ceiling welcomes you at the opposite end of the extra-wide hallway. In the dressing area, you'll find an over-sized walk-in closet, compartmented bath, double vanities, sizeable shower and a lavish cultured onyx oval tub.

For those requiring spacious design, plentiful features and quality craftsmanship, the Chabot not only meets, but exceeds the standard.

The Del Valle Plan 2318

4 Bedrooms 2½ Baths 2 Story Home 2,318 Square Feet



The dramatic vaulted living room heralds the gracious design of the Del Valle. The formal dining room, with raised ceiling, is the quintessential choice for elegant entertaining.

The spacious family room, with heat-circulating fireplace and sliding glass doors is the ideal gathering spot for informal occasions, situated just off the bay window nook and expansive gourmet kitchen. The large tile island is conveniently surrounded by many outstanding appliances, a convenient pantry, and furniture-finished cabinetry. A separate powder room is also thoughtfully located on this level.

Upstairs, the center walkway with extensive storage overlooks both the living room and the dining room. A trio

of secondary bedrooms and a convenient full bath are at one end of the extra-wide hall.

At the other end of the hall is a master bedroom suite 'par excellence.' The stately double doors open to welcome you to the generous bedroom area, with its bay window sitting area and see-through fireplace for your more reflective moods. The dressing area boasts an immense walk-in closet, double vanities, extra-large shower and a cultured onyx oval tub where you can enjoy the other side of the fireplace.

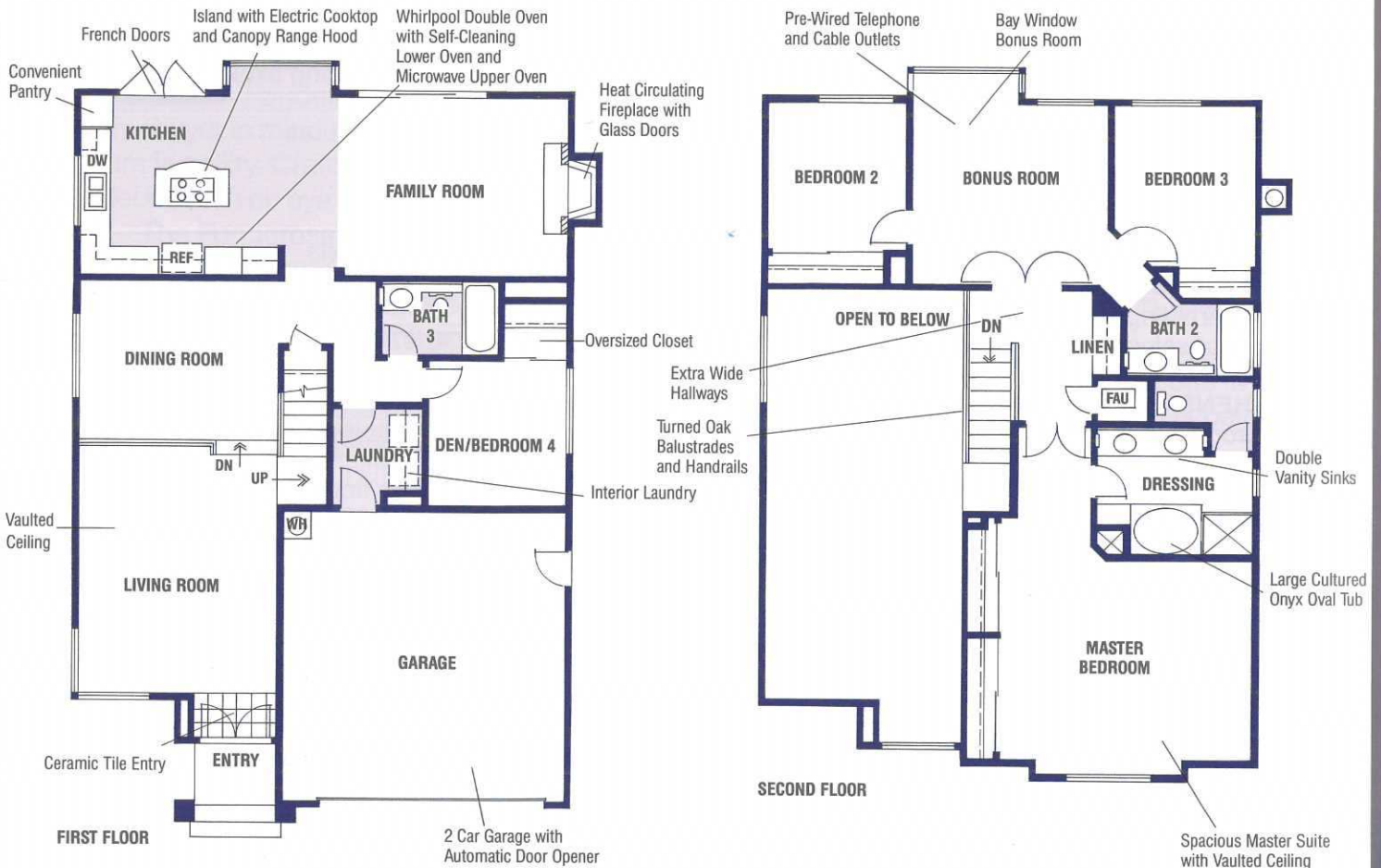
Exceptional design and commitment to excellence are evident throughout this plan. Gracious living and exceptional quality are yours in the Del Valle.

Country Fair
Pave

DOUG BUENZ
THE 680 GROUP

The Muirwood Plan 2405

4 Bedrooms  3 Baths  2 Story Home  2,405 Square Feet



Every feature of the Muirwood stands for quality of design and expert workmanship. As you enter, lofty vaulted ceilings greet you with an aura of elegance. The elegance continues as you step down into the formal dining area with its expansive picture window.

The open family room with sliding glass doors and wood-burning fireplace is ideal for informal entertaining. It adjoins the generous gourmet kitchen and breakfast nook with bay window. The main focus here is the large tile cooking island with canopy range hood, but also features choice appliances and gracious French doors. On this level, you'll also find a full bath and an extra bedroom — just right for a den or overnight guest.

Off the extra-wide hallway upstairs, is a bountious bonus room with bay window that includes pre-wired telephone and cable television outlets. Two additional bedrooms and a full bath are all just off the bonus room.

At the far end of the hall is the luxurious master bedroom suite with its double closets and large dressing area which features double vanities, an oversized shower and a cultured onyx oval soak tub.

Masterful architecture and careful attention to craftsmanship are apparent in every detail of the largest home — The Muirwood.

Artist's conception of floorplans. All plans, features and specifications are subject to change without notice. The floorplans and renderings are for information purposes only and are not intended to be a representation as to exact size. Window and door placement may vary with elevation. Rear and side yard landscaping and draperies are not included in purchase price. Square footage is approximate.