

3846 - 3848 Camino Del Rio W

SAN DIEGO, CA 92110

**4,276 SF +
1,671 SF BONUS
MEZZANINE
SPACE**

.....
**AVAILABLE
FOR LEASE**

WAREHOUSE / SHOWROOM / GYM OPPORTUNITY

RYAN KING

619-567-2677

ryan.king@cast-cap.com

CA License #01885401

JOSH SIMMS

619-500-7473

josh.simms@cast-cap.com

CA License #02080261

JOSEPH SCHULTZ

619-816-4281

joseph.schultz@cast-cap.com

CA License #02173928

CAST
CAPITAL PARTNERS

PROPERTY DETAILS

ADDRESS 3846-3848 Camino Del Rio W,
San Diego, CA 92110

USE Showroom/Warehouse

SIZE Ground Floor: 4,276 SF
Mezzanine: 1,671 SF

RATE Ground Floor: \$3.25/SF + NNN
Mezzanine: \$1.00/SF + NNN
NNN = \$0.40/SF

PROPERTY HIGHLIGHTS

- Prime Midway / Sports Arena District location
- Minutes to I-5, I-8 & Hwy 163 for regional accessibility
- 5 minutes to San Diego International Airport
- Near Old Town Transit Center & Washington St Trolley Station (excellent employee access)
- Immediate proximity to Liberty Station, Downtown, Mission Hills & Point Loma
- Centrally located to serve coastal and urban trade areas



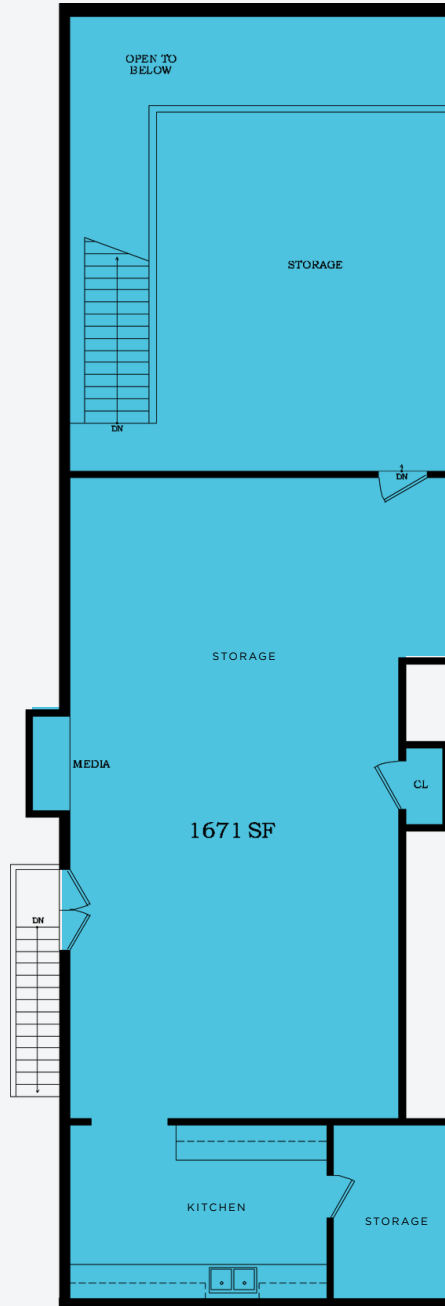
FLOOR PLAN

SHOWROOM/WAREHOUSE SPACE



FLOOR PLAN

MEZZANINE SPACE







SITE

**OLD TOWN
SAN DIEGO**

**MIDWAY
RETAIL /
SPORTS ARENA
DISTRICT**

**OLD TOWN
TRANSIT
CENTER**



MISSION HILLS

**WASHINGTON
ST TROLLEY
STATION**

**LIBERTY
STATION**



**PORT OF
SAN DIEGO**

**SAN DIEGO
INTERNATIONAL
AIRPORT**

**DOWNTOWN
SAN DIEGO**





CAST

CAPITAL PARTNERS

5090 Shoreham Place Suite 100
San Diego, CA 92122
information@cast-cap.com
619-308-6680

www.Cast-Cap.com

RYAN KING
619-567-2677
ryan.king@cast-cap.com
CA Licence #01885401

JOSH SIMMS
619-500-7473
josh.simms@cast-cap.com
CA License #02080261

JOSEPH SCHULTZ
619-816-4281
joseph.schultz@cast-cap.com
CA License #02173928

This information above was obtained from sources deemed reliable. No warranties or representations, expressed or implied, are made as to the accuracy of the information contained herein, and same is submitted subject errors, omissions, change of price, rental or other conditions, withdrawal without notice, and to any special listing conditions imposed by our principals. This information is given with the understanding that all negotiations relating to the purchase, renting or leasing of the property described herein shall be conducted through CAST Capital Partners.