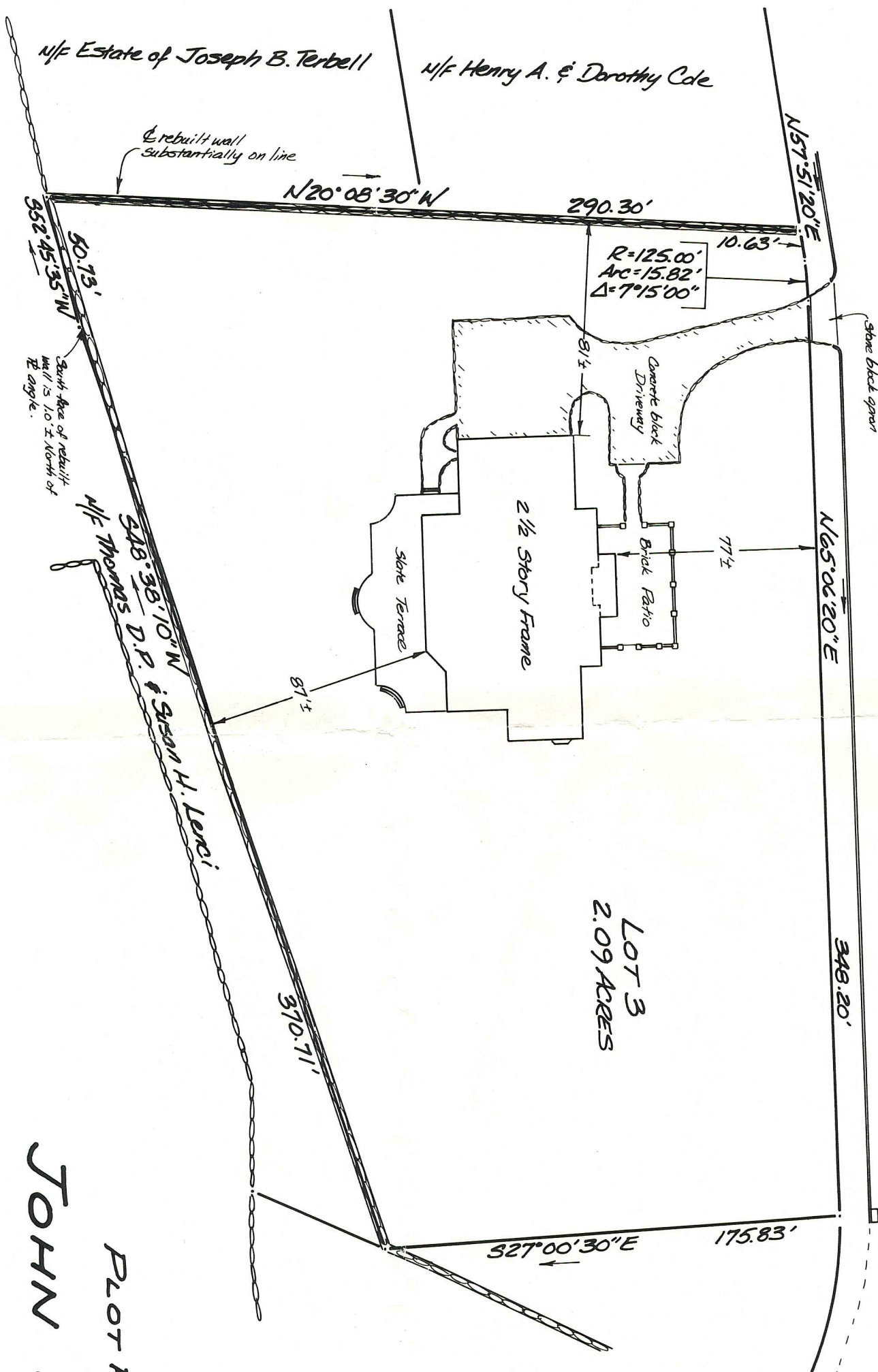


Being Lot 3 on map "Subdivision For Robert Mangrove Trustee Fairfield, Conn., June 20, 1986, Rev. Nov. 11, 1987" on file in the Fairfield Town Clerk's office.

GOLDEN POND LANE



LOT 3
2.09 ACRES

LOT PLAN FOR
JOHN WELLMER

FAIRFIELD, CONN. APRIL 10, 1991

I hereby state to the best of my intention, knowledge and belief this map is substantially correct and an A-2 survey.

John H. ...
The Huntington Company
Engineers & Surveyors - Fairfield, Conn.

Scale 1" = 50'

#250-53-4 17-147 CS27