



MR. CHRIS FORSTER

SOLAR PANEL CLEANING/ THERMAL IMAGES



Summary

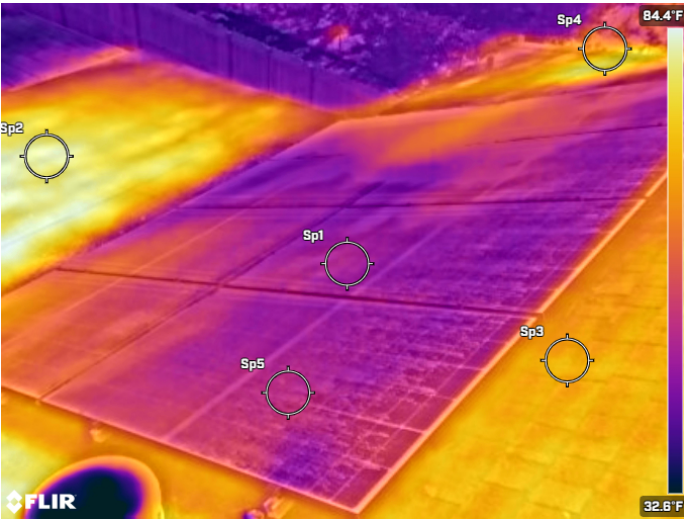
WE TOOK THERMAL IMAGES BEFORE THE CLEANING. THERE WAS NO VISIBLE DAMAGE OR CRACKED PANELS WE DID NOT DISCOVER ANY HOT SPOTS ON ANY OF YOUR PANELS YOUR SOLAR PANEL SYSTEM APPEARS TO BE IN GOOD WORKING ORDER.

Recommendations

CONTINUE TO MONITOR YOUR OUTPUT. AND STAY CURRENT WITH YOUR YEARLY CLEANINGS

Signature

TYRONE WRIGHT



IR - FLIR0216 .jpg



DC - FLIR0216 .jpg

Measurements

⊕ Sp1	54.8 °F
⊕ Sp2	81.4 °F
⊕ Sp3	70.1 °F
⊕ Sp4	66.0 °F
⊕ Sp5	55.6 °F

Parameters

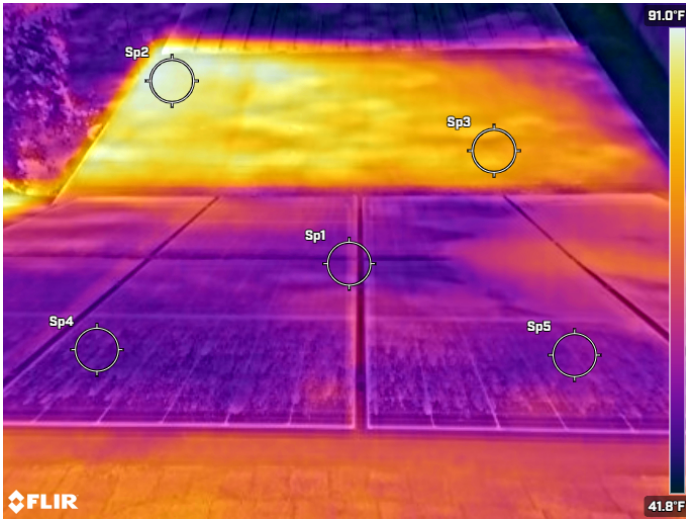
Emissivity	0.95
Reflect Temp.	68.0 °F
Distance	3.3 ft
Atmospheric temp.	68.0 °F
Atmospheric transm.	0.00
External optics temp.	68.0 °F
External optics transm.	1.0
Relative humidity	50.0%

Notes

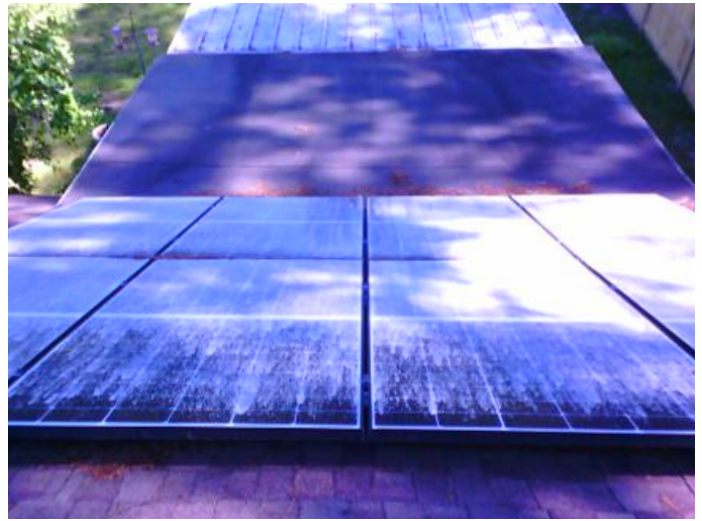
REAR ARRAY. NO VISIBLE DAMAGE OR HOT SPOTS

Location

Compass information	Pitch	0°
	Roll	0°



IR - FLIR0217 .jpg



DC - FLIR0217 .jpg

Measurements

⊕ Sp1	53.7 °F
⊕ Sp2	88.7 °F
⊕ Sp3	71.2 °F
⊕ Sp4	52.1 °F
⊕ Sp5	53.5 °F

Parameters

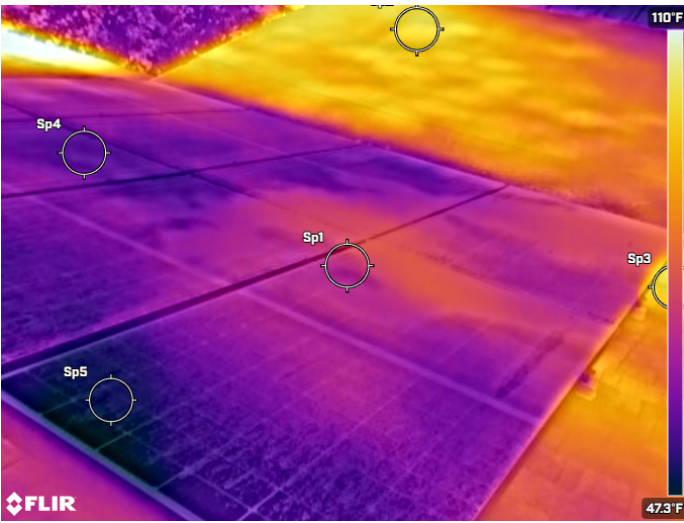
Emissivity	0.95
Reflect Temp.	68.0 °F
Distance	3.3 ft
Atmospheric temp.	68.0 °F
Atmospheric transm.	0.00
External optics temp.	68.0 °F
External optics transm.	1.0
Relative humidity	50.0%

Notes

REAR ARRAY. NO VISIBLE DAMAGE OR HOT SPOTS

Location

Compass information	Pitch	0°
	Roll	0°



IR - FLIR0218 .jpg



DC - FLIR0218 .jpg

Measurements

⊕ Sp1	64.6 °F
⊕ Sp2	92.8 °F
⊕ Sp3	91.9 °F
⊕ Sp4	57.3 °F
⊕ Sp5	51.6 °F

Parameters

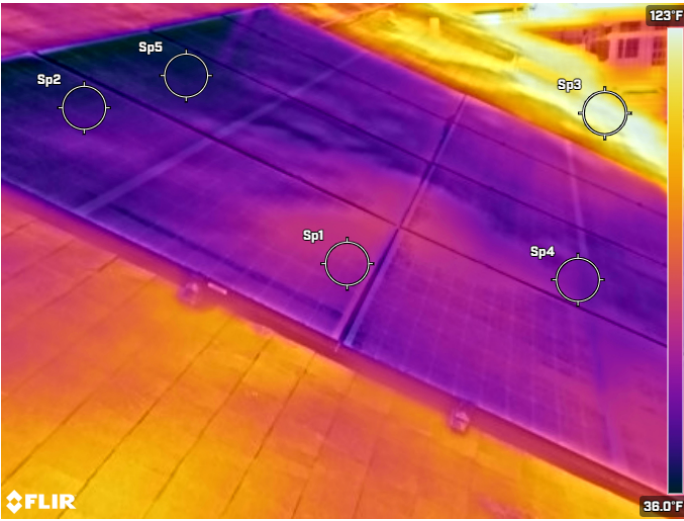
Emissivity	0.95
Reflect Temp.	68.0 °F
Distance	3.3 ft
Atmospheric temp.	68.0 °F
Atmospheric transm.	0.00
External optics temp.	68.0 °F
External optics transm.	1.0
Relative humidity	50.0%

Notes

REAR ARRAY. NO VISBLE DAMAGE OR HOT SPOTS.

Location

Compass information	Pitch	0°
	Roll	0°



IR - FLIR0219 .jpg



DC - FLIR0219 .jpg

Measurements

⊗ Sp1	62.0 °F
⊗ Sp2	48.9 °F
⊗ Sp3	122 °F
⊗ Sp4	55.3 °F
⊗ Sp5	44.2 °F

Parameters

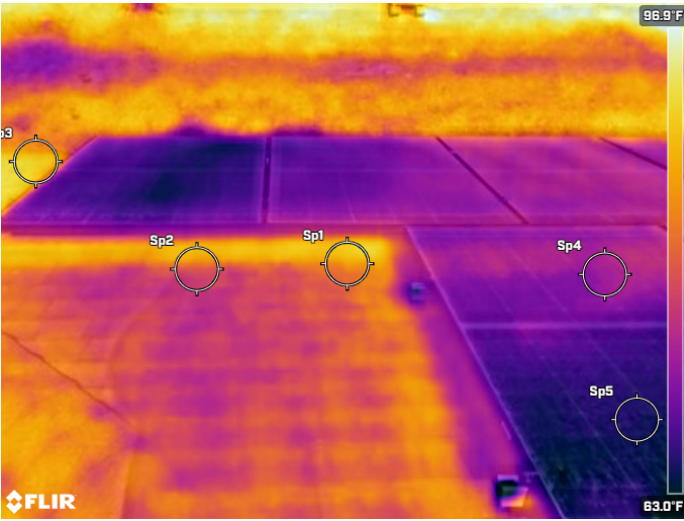
Emissivity	0.95
Reflect Temp.	68.0 °F
Distance	3.3 ft
Atmospheric temp.	68.0 °F
Atmospheric transm.	0.00
External optics temp.	68.0 °F
External optics transm.	1.0
Relative humidity	50.0%

Notes

REAR ARRAY. NO VISIBLE DAMAGE OR HOT SPOTS

Location

Compass information	Pitch	0°
	Roll	0°



IR - FLIR0220 .jpg



DC - FLIR0220 .jpg

Measurements

⊗ Sp1	82.0 °F
⊗ Sp2	77.3 °F
⊗ Sp3	87.0 °F
⊗ Sp4	72.7 °F
⊗ Sp5	66.3 °F

Parameters

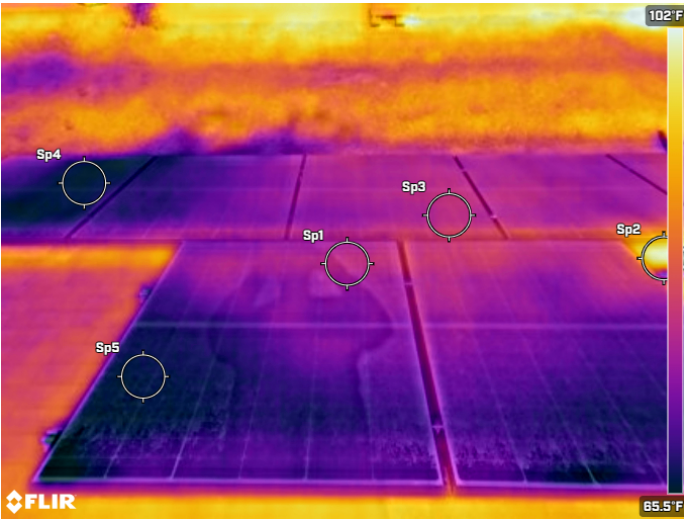
Emissivity	0.95
Reflect Temp.	68.0 °F
Distance	3.3 ft
Atmospheric temp.	68.0 °F
Atmospheric transm.	0.00
External optics temp.	68.0 °F
External optics transm.	1.0
Relative humidity	50.0%

Notes

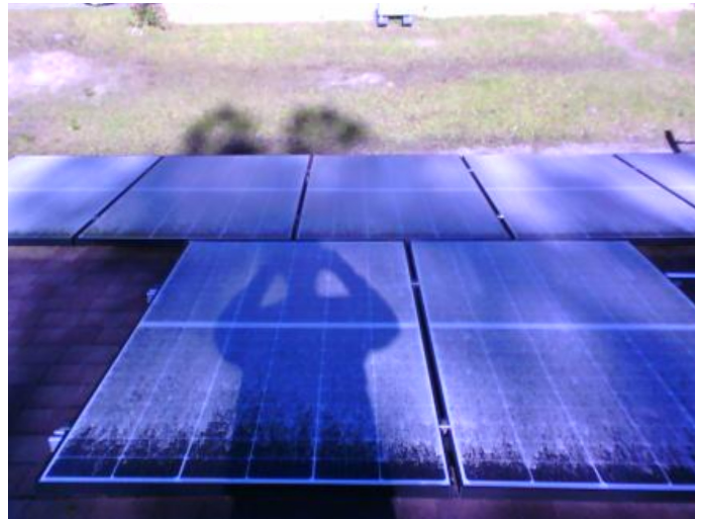
LEFT SIDE ARRAY. NO VISIBLE DAMAGE OR HOT SPOTS.

Location

Compass information	Pitch	0°
	Roll	0°



IR - FLIR0221 .jpg



DC - FLIR0221 .jpg

Measurements

⊗ Sp1	75.7 °F
⊗ Sp2	99.1 °F
⊗ Sp3	75.4 °F
⊗ Sp4	66.3 °F
⊗ Sp5	67.0 °F

Parameters

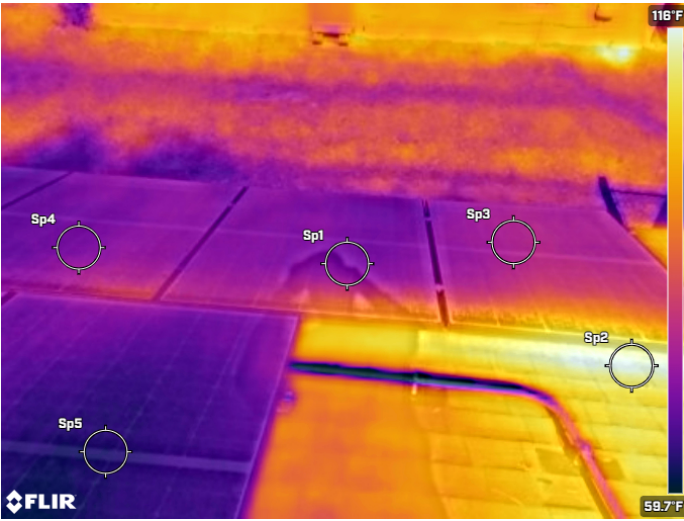
Emissivity	0.95
Reflect Temp.	68.0 °F
Distance	3.3 ft
Atmospheric temp.	68.0 °F
Atmospheric transm.	0.00
External optics temp.	68.0 °F
External optics transm.	1.0
Relative humidity	50.0%

Notes

LEFT SIDE ARRAY. NO VISBLE DAMAGE OR HOT SPOTS.

Location

Compass information	Pitch	0°
	Roll	0°



IR - FLIR0222 .jpg



DC - FLIR0222 .jpg

Measurements

⊕ Sp1	74.7 °F
⊕ Sp2	116 °F
⊕ Sp3	78.7 °F
⊕ Sp4	74.6 °F
⊕ Sp5	67.6 °F

Parameters

Emissivity	0.95
Reflect Temp.	68.0 °F
Distance	3.3 ft
Atmospheric temp.	68.0 °F
Atmospheric transm.	0.00
External optics temp.	68.0 °F
External optics transm.	1.0
Relative humidity	50.0%

Notes

LEFT SIDE ARRAY. NO VISIBLE DAMAGE OR HOT SPOTS.

Location

Compass information	Pitch	0°
	Roll	0°