



# Gale

MIAMI

## LOCATION

Gale Miami Hotel and Residences is a brand new 51 story, one-of-kind hybrid hospitality experience in the heart of downtown Miami. Purposely located near significant tourist destinations like the Kaseya Center, Port Miami, Museum Park and Bayside Marketplace, it is steps from the Brickell District, Miami's major hub for business and financial institutions.

## GALE MIAMI ACCOMMODATIONS

The 350 rooms are furnished with modern chic decor, equipped with the latest technology and includes kitchens or kitchenette's for a complete opulent experience. The view from the rooms is unequivocally stunning: some guests will bask in the Biscayne Bay and others will gaze upon Magic City's impressive skyline.

## GALE WELLNESS

Gale Wellness, located on the 10th floor, introduces a brand-new spa with a hammam, steam room, sauna, and five treatment rooms – one of which showcases a rejuvenating Vichy Shower. Additionally, our expansive fitness center with private training rooms offers a versatile space for personalized workouts, complementing our array of fitness classes, including spinning and pilates, for a well-rounded wellness experience.

## LEISURE, FOOD BEVERAGE

On the 9th floor of this vertical community, an array of dining experiences awaits, boasting breathtaking vistas of Biscayne Bay and the iconic Miami skyline. The diverse selection of full-service restaurants and bars is thoughtfully positioned on the same level as the resort's alluring pool area, complete with pool-side cabanas. Of particular note is the expansive 9,000 square feet of restaurant space on the ground floor, featuring a captivating outdoor garden and an exclusive street-front dining destination. Additionally, the renowned Bodega Taqueria y Tequila.

### ADDRESS

601 NE 1st Ave  
Miami, FL 33132

### WEBSITE

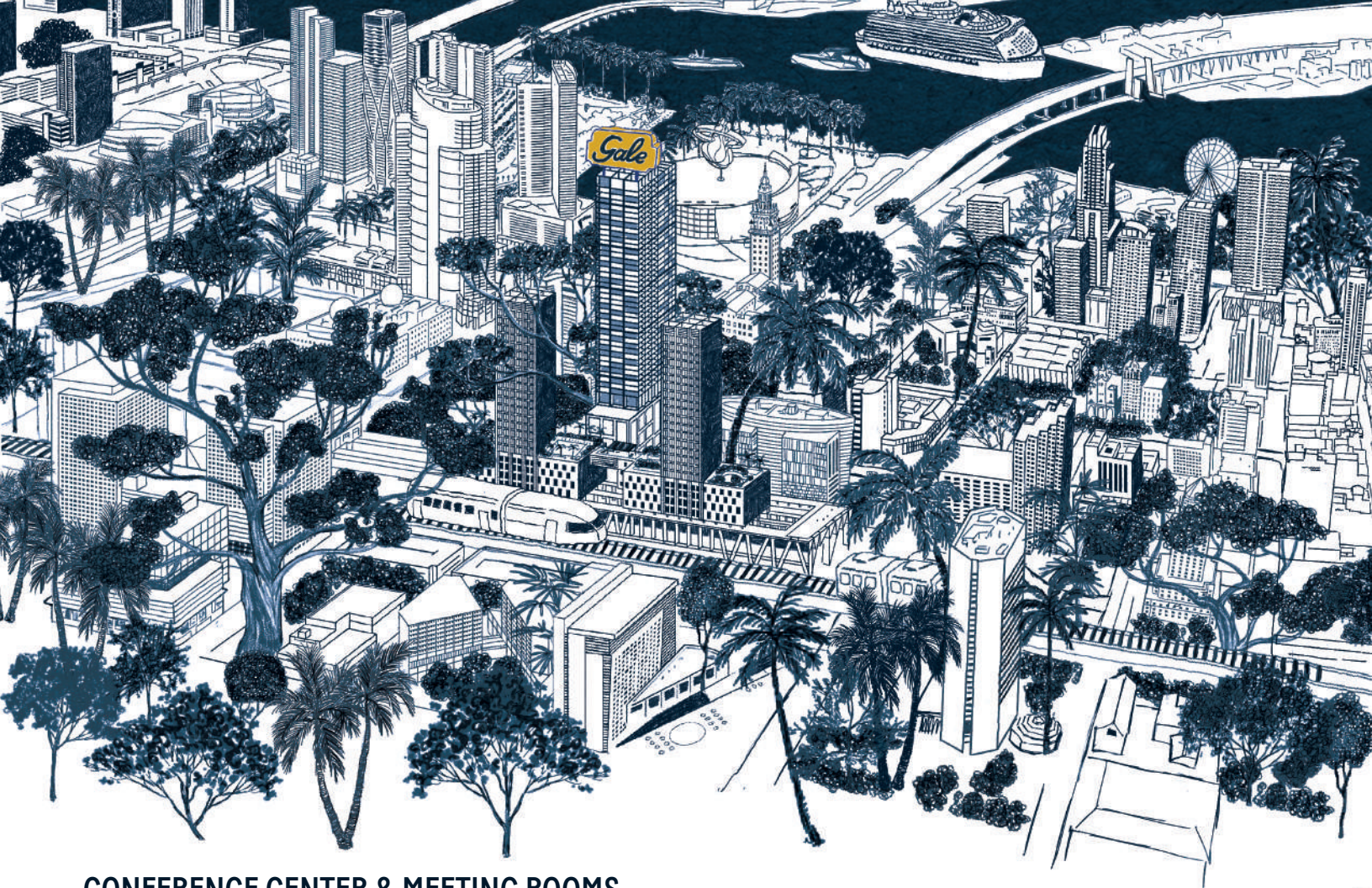
[galehotelmiami.com](http://galehotelmiami.com)

### CAPACITY

350 rooms

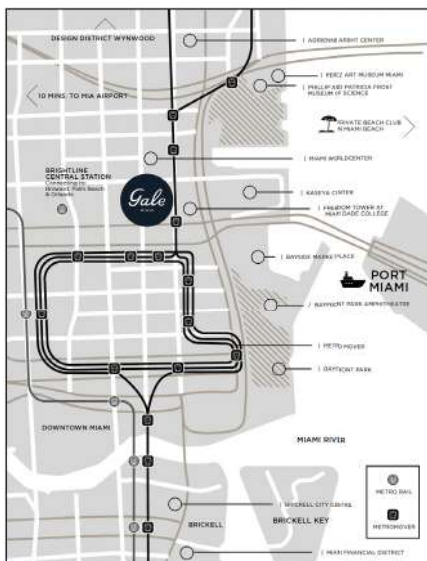
### CONTACT

[sales@galehotels.com](mailto:sales@galehotels.com)



## CONFERENCE CENTER & MEETING ROOMS

The vast 12,000 square feet Conference Center on the 8th floor is comprised of a 3,000 square foot Grand Ballroom, as well as multiple large meeting rooms, breakout rooms, and boardrooms, all equipped with the latest audio visual technology. Our esteemed Executive Chef has created the catering menu and wedding package with a diverse range of menu selections to deliver an exceptional culinary experience. The dedicated Sales team will take care of all the intricate and meticulous aspects of the event while guests indulge in the finest quality ingredients and impeccable preparations.



## WALKABILITY IN THE HEART OF DOWNTOWN MIAMI

- 0 MILES** Downtown Miami
- 0 MILES** Metro Mover
- 0.3 MILES** Brightline - Miami Central
- 1 MILE** Brickell Financial District
- 3 MILES** Design District & Wynwood
- 3 MILES** Port Miami
- 6 MILES** Miami Beach & Private Beach Club
- 6 MILES** Miami International Airport

### ADDRESS

601 NE 1st Ave  
Miami, FL 33132

### WEBSITE

[galehotelmiami.com](http://galehotelmiami.com)

### CAPACITY

350 rooms

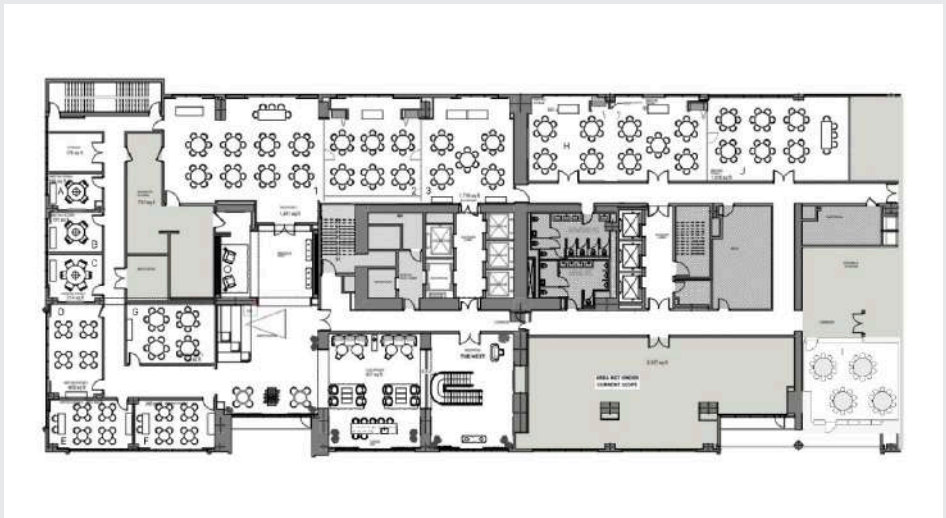
### CONTACT

[sales@galehotels.com](mailto:sales@galehotels.com)

# CAPACITY CHART

	SQ. FT.	BANQUET SEATING	THEATRE	UNSHAPED	BOARDROOM	CLASSROOM	RECEPTION
BRICKELL AVE. (A)	187	-	-	-	6	-	-
VENETIAN (B)	198	-	-	-	6	-	-
SEVEN MILE (C)	228	-	-	-	8	-	-
SUNSHINE SKYWAY (D)	441	22	32	-	12	16	40
JULIA TUTTLE (E)	356	20	30	-	10	14	36
MACARTHUR (F)	347	20	30	-	10	14	35
FREEDOM TOWER (G)	483	22	50	-	14	20	45
FLAGLER (I)	623	40	55	14	12	30	55
PORTMIAMI BALLROOM (HJ)	2,330	180	259	-	-	96	233
PORTMIAMI A (H)	1,302	100	145	42	40	54	130
PORTMIAMI B (J)	1,028	80	114	40	36	42	100
<b>SIGNATURE BALLROOM</b>	<b>3,029</b>	<b>240</b>	<b>336</b>	<b>-</b>	<b>-</b>	<b>126</b>	<b>303</b>
SIGNATURE 1	1,424	120	180	46	42	68	160
SIGNATURE 2	814	60	90	28	24	34	80
SIGNATURE 3	791	60	90	28	24	34	80

# EVENT SPACE FLOOR PLAN: BANQUET ROUNDS



## ADDRESS

601 NE 1st Ave  
Miami, FL 33132

## WEBSITE

[galehotelmiami.com](http://galehotelmiami.com)

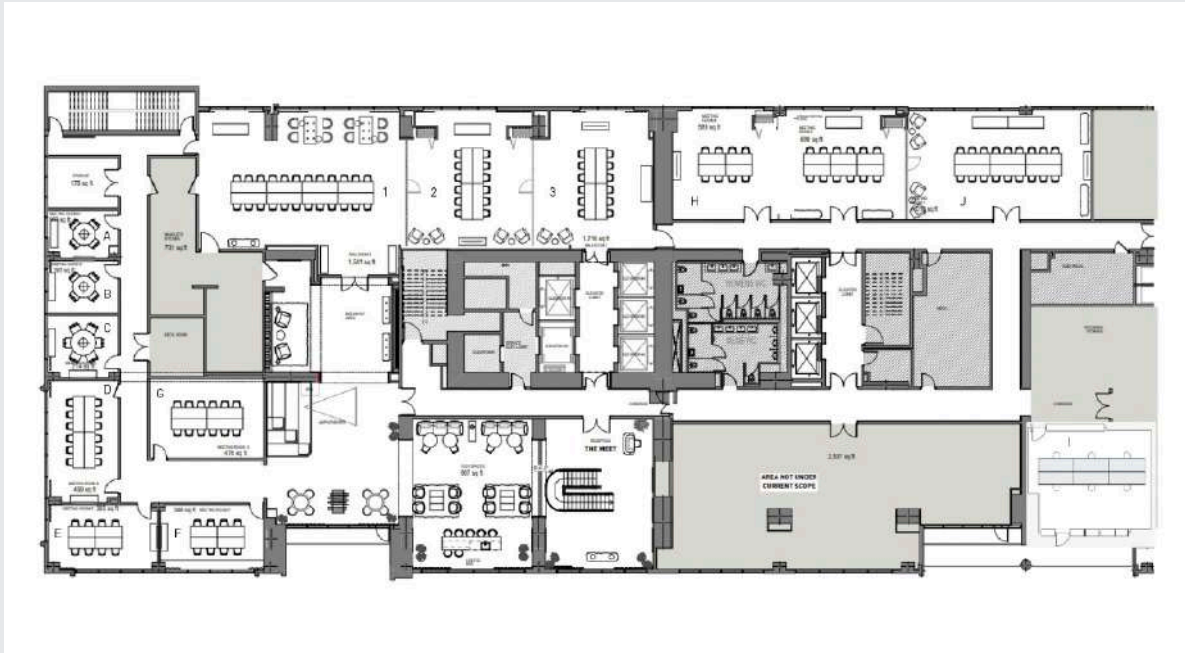
## CAPACITY

350 rooms

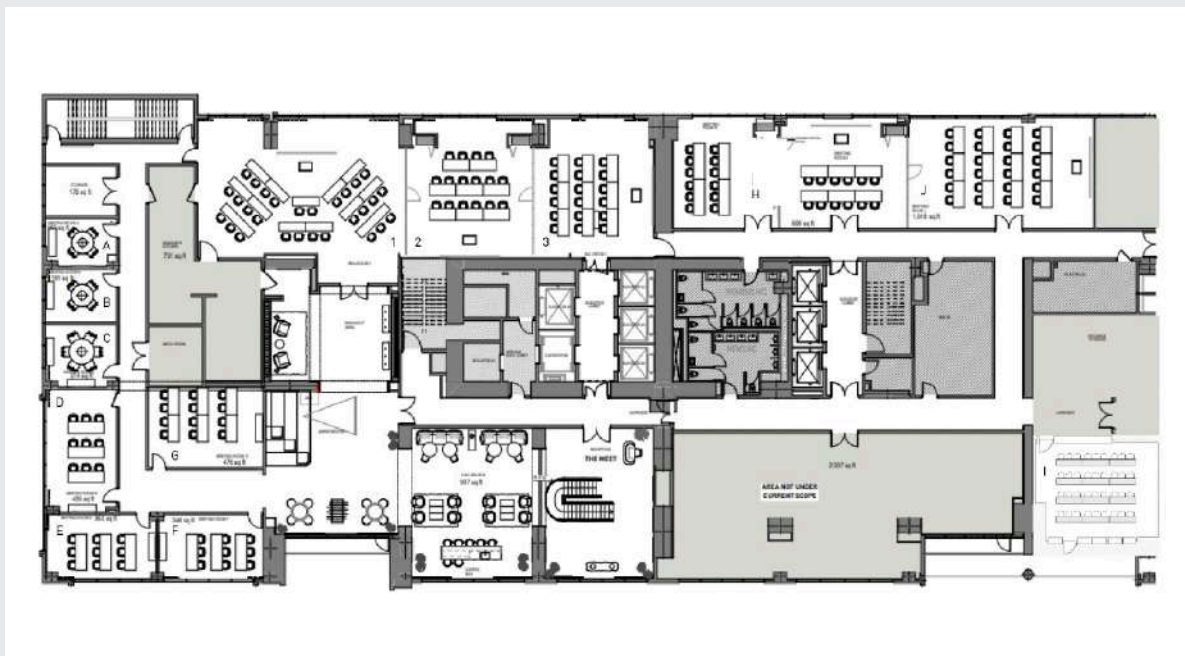
## CONTACT

[sales@galehotels.com](mailto:sales@galehotels.com)

## EVENT SPACE FLOOR PLAN: CONFERENCE



## EVENT SPACE FLOOR PLAN: CLASSROOM



### ADDRESS

601 NE 1st Ave  
Miami, FL 33132

### WEBSITE

[galehotelmiami.com](http://galehotelmiami.com)

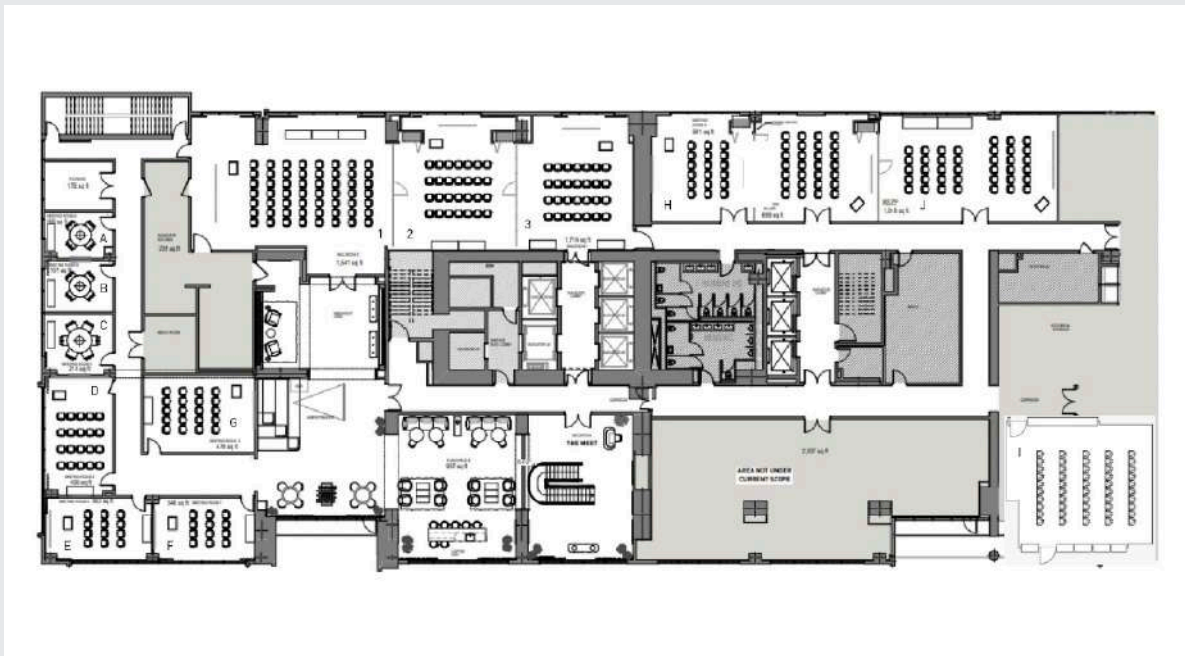
### CAPACITY

350 rooms

### CONTACT

[sales@galehotels.com](mailto:sales@galehotels.com)

## EVENT SPACE FLOOR PLAN: THEATRE



## EVENT SPACE FLOOR PLAN: U-SHAPED



### ADDRESS

601 NE 1st Ave  
Miami, FL 33132

### WEBSITE

[galehotelmiami.com](http://galehotelmiami.com)

### CAPACITY

350 rooms

### CONTACT

[sales@galehotels.com](mailto:sales@galehotels.com)