

**—Ayden—**  
A Two Story Floor Plan

2831+ Sqft, 4 Bedrooms, 3 Bathrooms, Attached Front Load 2 Car Garage, Main Level Owner's Suite w/ WIC, Laundry Room, Great Room w/ Fireplace, Dining Room, Kitchen w/ Island & Walk-In Pantry, Loft, Covered Front & Back Porch

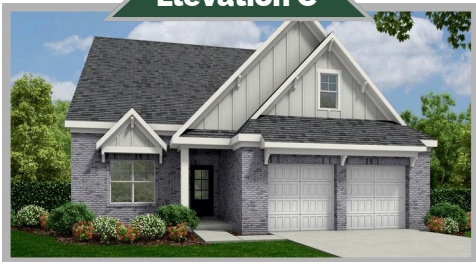
**Elevation A**



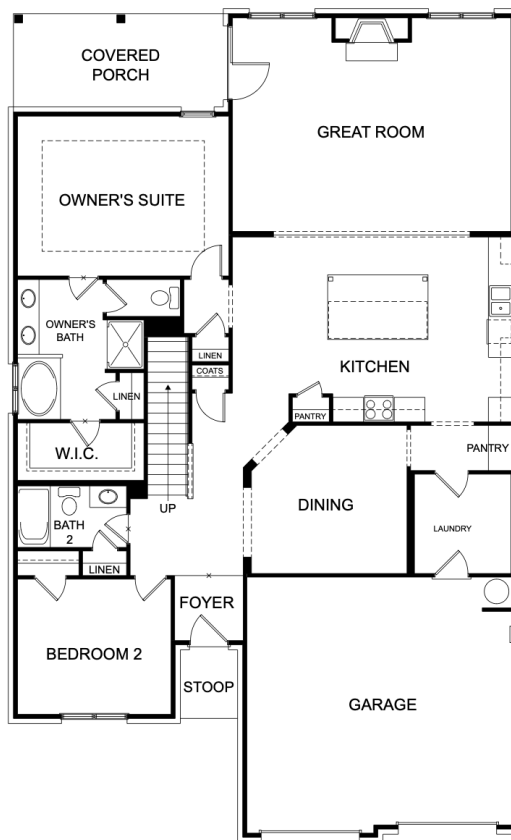
**Elevation B**



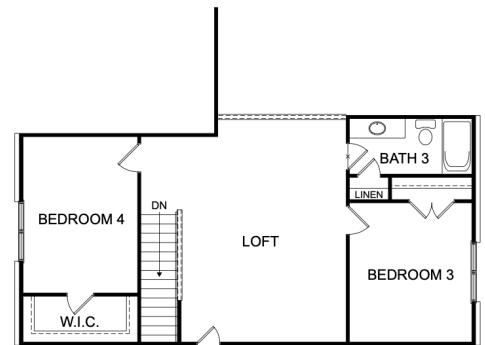
**Elevation C**



**Main Level**



**Second Level**



**Floor Plan Options:**

JASPER MEADOWS HOMES WILL HAVE ONLY FRONT LOAD GARAGE

- Optional Extended Covered Porch
- Optional Screened-In Porch (Extended Optional Also Avail.)
- Optional Sunroom (Removes Covered Porch)
- Optional Fireplace Location (Ask Representative)
- Optional Owner's Suite Walk-In Shower (Removes Garden Tub)
- Optional Study (Removes Bedroom 2)

- Optional Garage Service Door
- Optional Side Entry Garage
- Optional Extended Loft/Dormer (Second Level)
- Various Front Porch Sizes (Per Elevation)
- Optional Laundry Sink (Cabinet w/ Granite Top Also Avail.)

