

— **Roller Mill** —  
A Two Story Floor Plan

3378+ Sqft, 4-5 Bedrooms, 3.5-4 Bathrooms, Attached 3 Car Side Load Garage, Main Level Owner's Suite w/ WIC, Laundry Room, Great Room w/ Fireplace, Living Room, Dining Room, Kitchen w/ Island, Walk-In Pantry, Breakfast Area, Second Level Unfinished Storage Area, Covered Front Porch, Deck

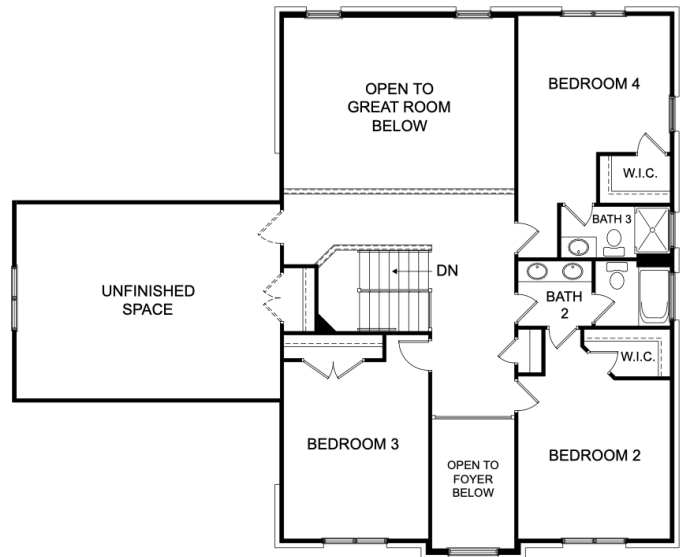


# — Roller Mill —

## Floor Plan

Main Level

Second Level



JASPER MEADOWS HOMES WILL HAVE FRONT LOAD GARAGE

### Floor Plan Options:

- Optional Screen Porch (Removes Deck)
- Optional Gourmet Kitchen (Gas Cooktop, Vent Hood, Wall Oven & Built-In Microwave)
- Optional Laundry Sink (Laundry Room Wall and/or Base Cabinets also available)
- Optional Coffered Dining Room Ceiling
- Optional Front Load 2 Car Garage (Removes 3 Car Side Load Garage)
- Optional Bathroom 4 (Removes Powder Room)
- Optional Bedroom 5 w/ Bath 4 (Removes Powder Room & Living Room)
- Optional Second Level Game Room (Removes Unfinished Storage Area)
- Optional Second Level Children's Retreat (Removes Second Level being Open to Great Room Below)

