

— **Ashewood** —  
A Two Story Floor Plan

2217+ Sqft, 3 Bedrooms, 2-3 Bathrooms, Attached 2 Car Side Load Garage, Main Level Owner's Suite w/ WIC, Laundry Room, Open Concept Great Room w/ Fireplace, Dining Room, Kitchen w/ Island, Pantry, Upstairs Bonus Room, Covered Front & Back Porch



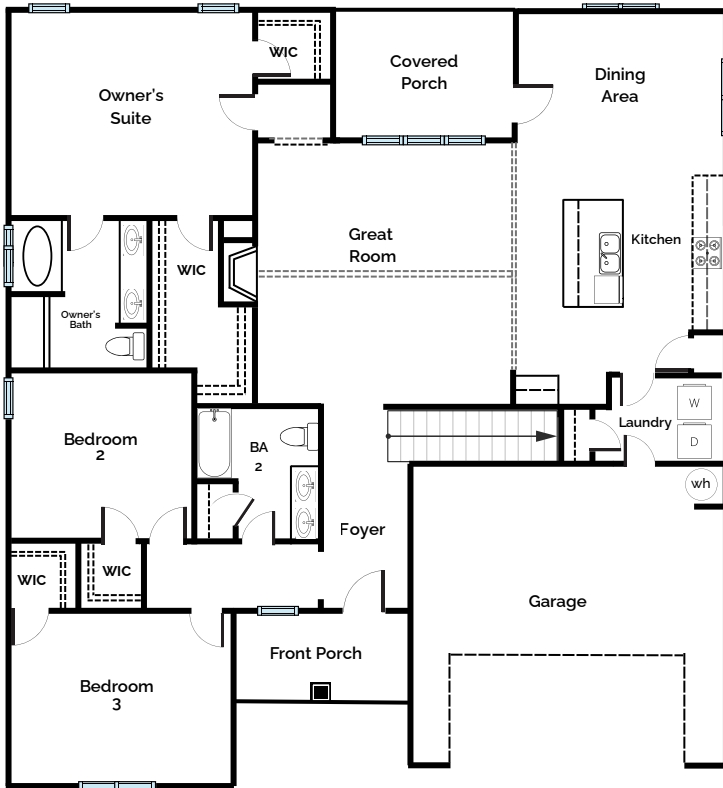
JASPER MEADOWS HOMES WILL HAVE FRONT LOAD GARAGE

[Click Here to Access the Interactive Floor Plan](#)

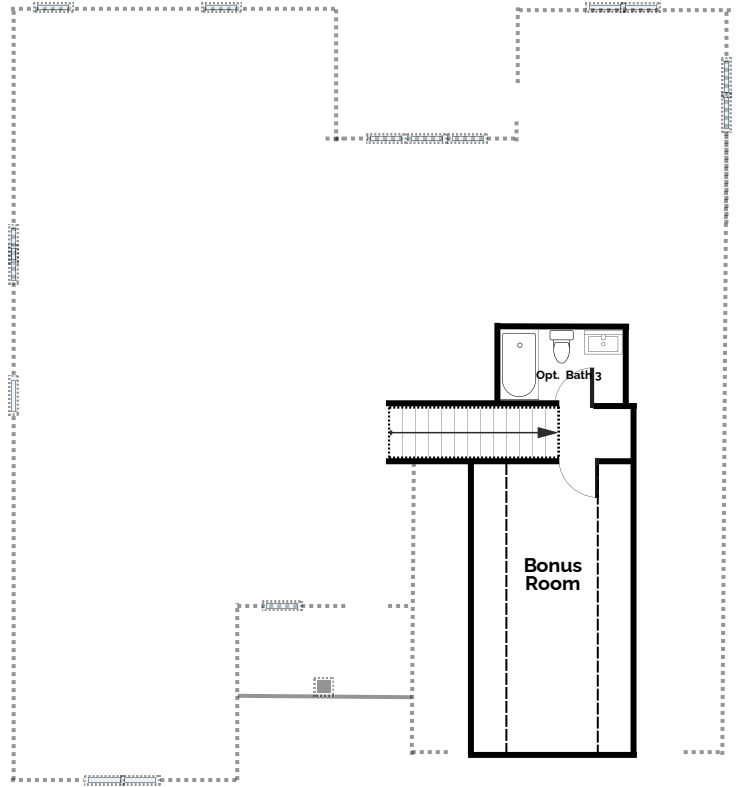


— **Ashewood** —  
Floor Plan

Main Level



Second Level



**Floor Plan Options:**

- Optional 9' Sliding Glass Door
- Optional 4' Patio Extension
- Optional Laundry Bench
- Optional Side Load Garage
- Optional Full Bath 3 (Upper Bonus Room)

[Click Here to Access the Interactive Floor Plan](#)

