

— Heritage Bridge —

A Two Story Floor Plan

3401+ Sqft, 4-5 Bedrooms, 2.5-3.5 Bathrooms, Attached 2 Car Side Load Garage, Foyer, Main Level Owner's Suite w/ WIC, Laundry Room, Great Room w/ Fireplace, Dining Room, Kitchen w/ Island, Walk-In Pantry, Loft, Bonus Room, Covered Front Porch, Deck



JASPER MEADOWS HOMES WILL HAVE FRONT LOAD GARAGE

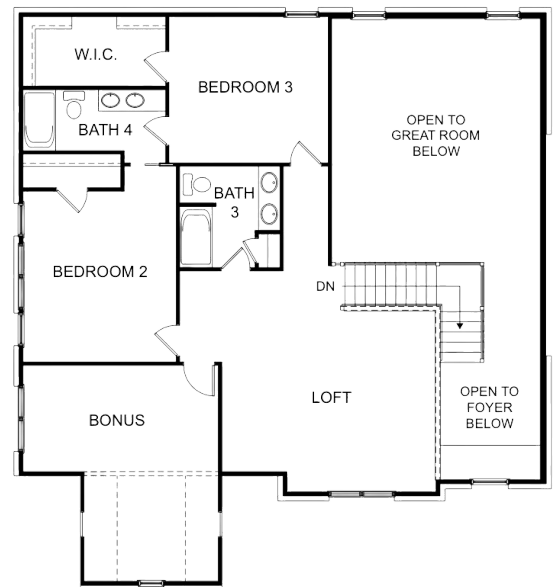
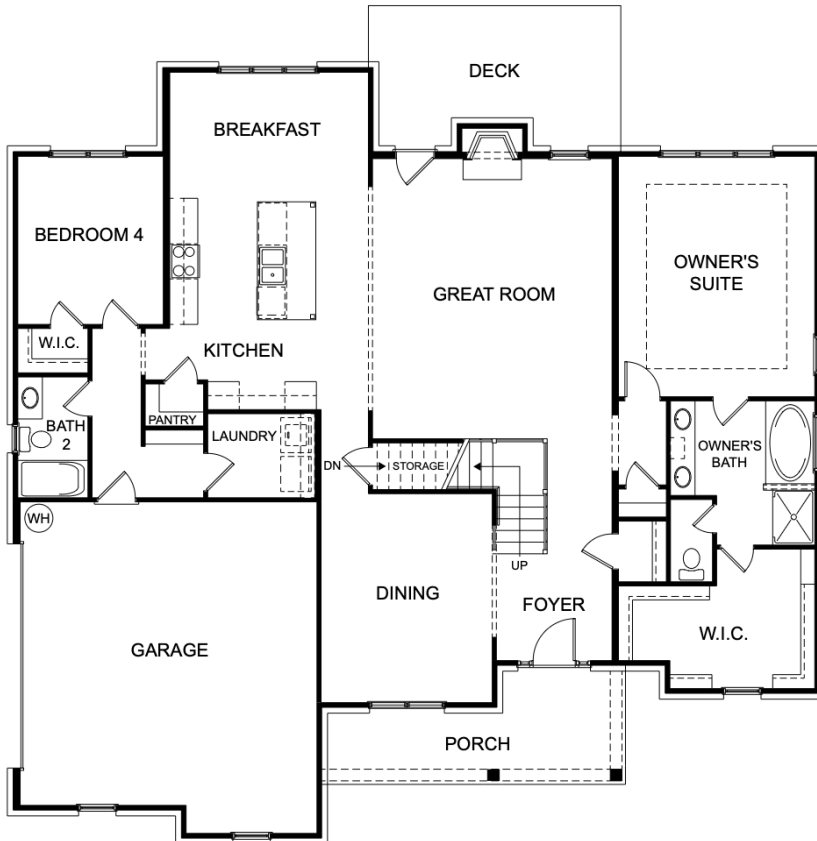


— Heritage Bridge —

Floor Plan

Main Level

Second Level



Floor Plan Options:

- Optional Screen Porch (Removes Deck)
- Optional Keeping Room (Removes Bedroom 4)
- Optional Gourmet Kitchen (Gas Cooktop, Vent Hood, Wall Oven & Built-In Microwave)
- Optional Owner's Bath Walk-In Shower
- Optional Study (Removes Dining Room)
- Optional 3rd Car Garage (Front or Side Load Available)
- Optional Bedroom 5 w/ WIC & Linen Closet (Removes Loft)

Alternative Layout Options:

- Alt. Fireplace Location w/ Built Ins

