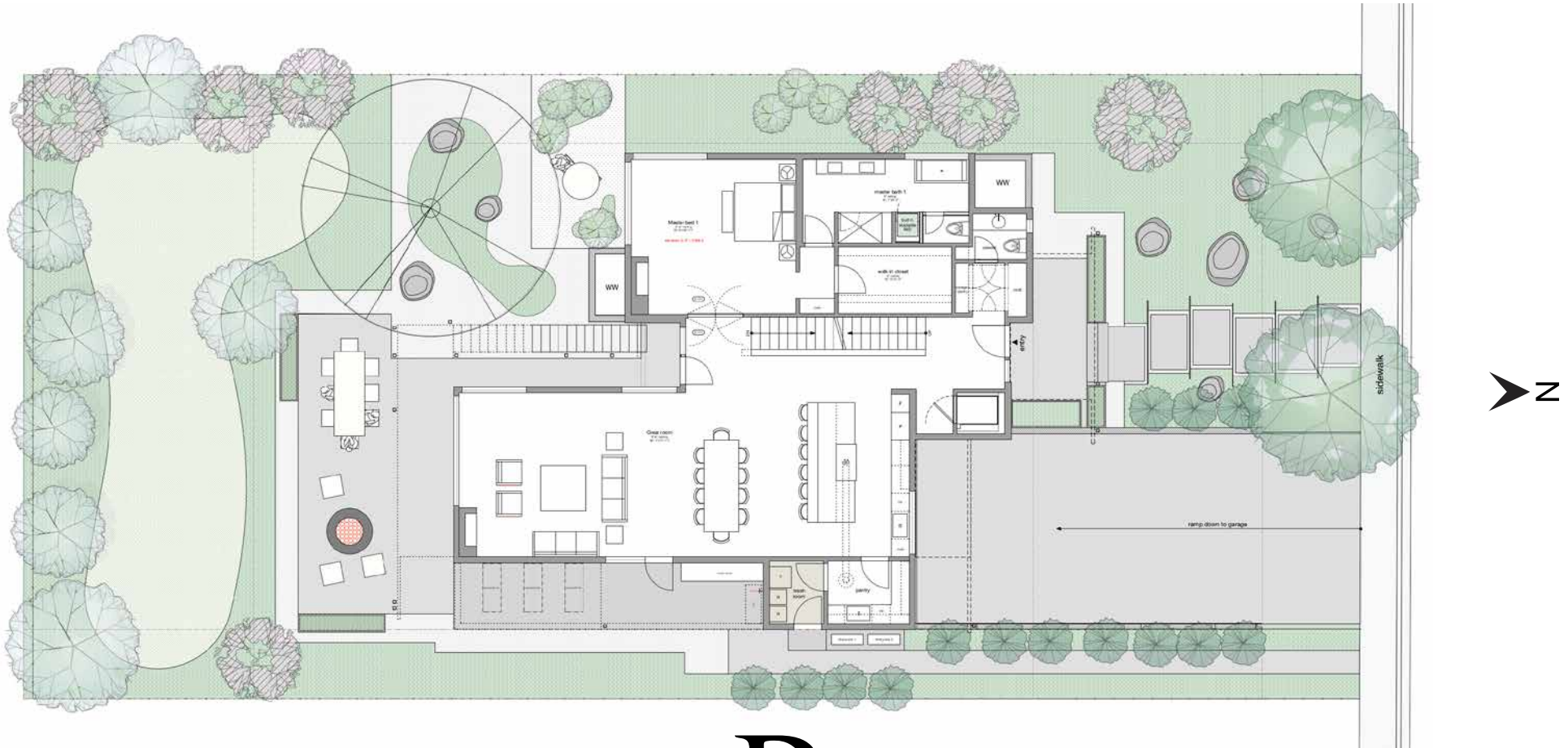


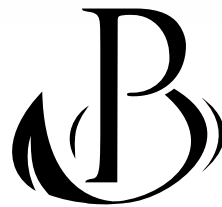
# 1860 BLUEBELL AVENUE | BOULDER, CO

## FIRST FLOOR



Offered Exclusively by

Patrick T. Brown  
Patrick Brown Group/Compass  
303-242-6012  
patrick@patrickbrowngroup.com  
www.patrickbrowngroup.com



PATRICK BROWN  
GROUP

While every attempt has been made to ensure the accuracy of the floorplan contained here, measurements of doors, windows and rooms are approximate and no responsibility is taken for any omission or mis-statement. These plans are for visual representation purposes only and should be used as such by any prospective purchaser. Floor plan is not an architectural as-built and square footage numbers provided by the architect. Only those items specified in the contract of sale convey. Floor plan may not be transferred or sold. It is for the exclusive use of Patrick T. Brown and the Patrick Brown Group.

Floor Plans by Ali Gidfar of Pace Development, (303) 484-9200, ali@pacedevelopment.us

COMPASS

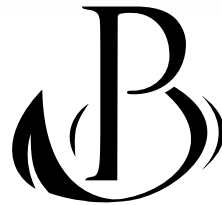
# 1860 BLUEBELL AVENUE | BOULDER, CO

## SECOND FLOOR



Offered Exclusively by

Patrick T. Brown  
Patrick Brown Group/Compass  
303-242-6012  
[patrick@patrickbrowngroup.com](mailto:patrick@patrickbrowngroup.com)  
[www.patrickbrowngroup.com](http://www.patrickbrowngroup.com)



PATRICK BROWN  
GROUP

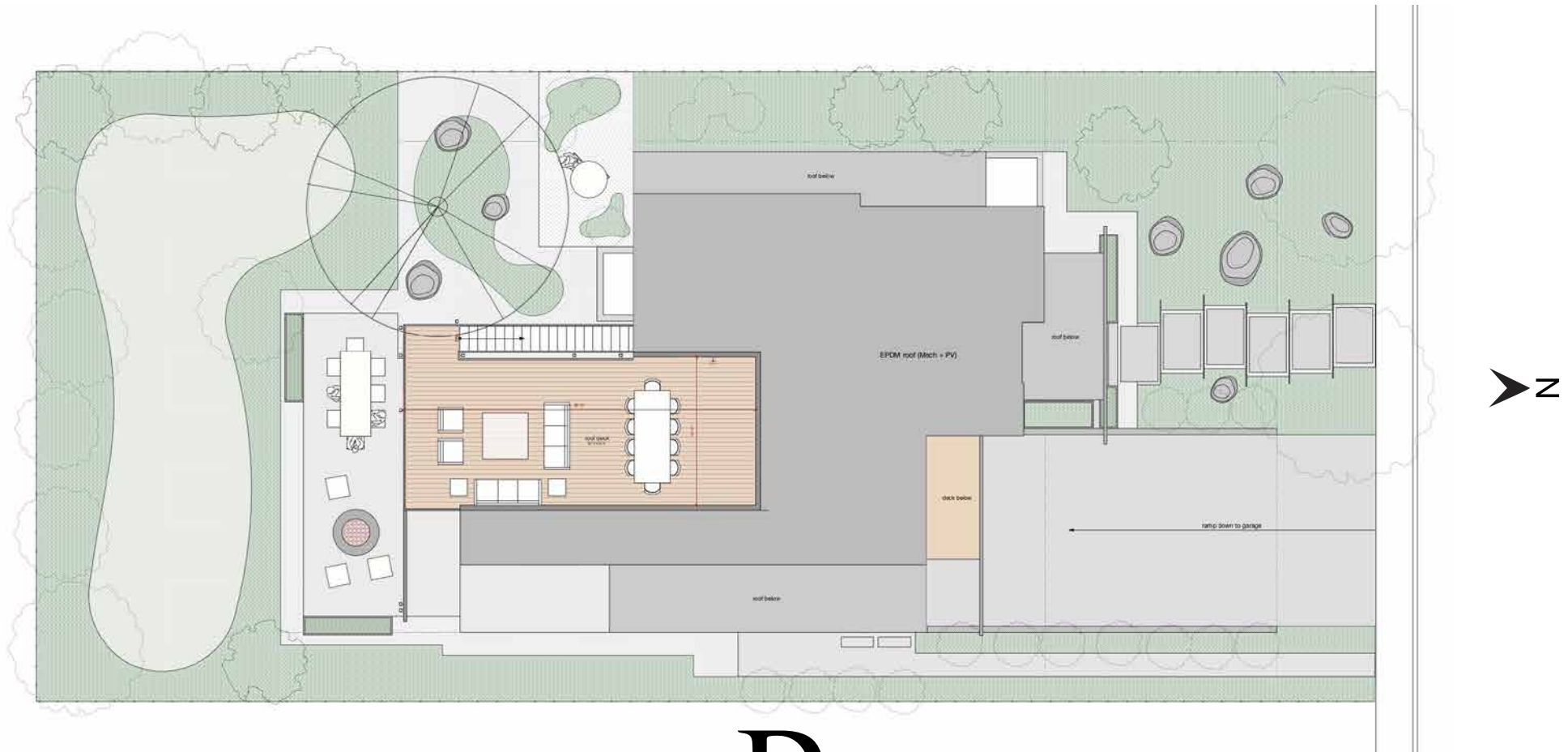
While every attempt has been made to ensure the accuracy of the floorplan contained here, measurements of doors, windows and rooms are approximate and no responsibility is taken for any omission or mis-statement. These plans are for visual representation purposes only and should be used as such by any prospective purchaser. Floor plan is not an architectural as-built and square footage numbers provided by the architect. Only those items specified in the contract of sale convey. Floor plan may not be transferred or sold. It is for the exclusive use of Patrick T. Brown and the Patrick Brown Group.

Floor Plans by Ali Gidfar of Pace Development, (303) 484-9200, [ali@pacedevelopment.us](mailto:ali@pacedevelopment.us)

COMPASS

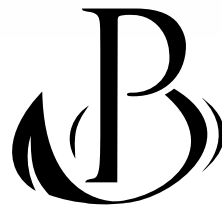
# 1860 BLUEBELL AVENUE | BOULDER, CO

## ROOF PLAN



Offered Exclusively by

Patrick T. Brown  
Patrick Brown Group/Compass  
303-242-6012  
patrick@patrickbrowngroup.com  
www.patrickbrowngroup.com



PATRICK BROWN  
GROUP

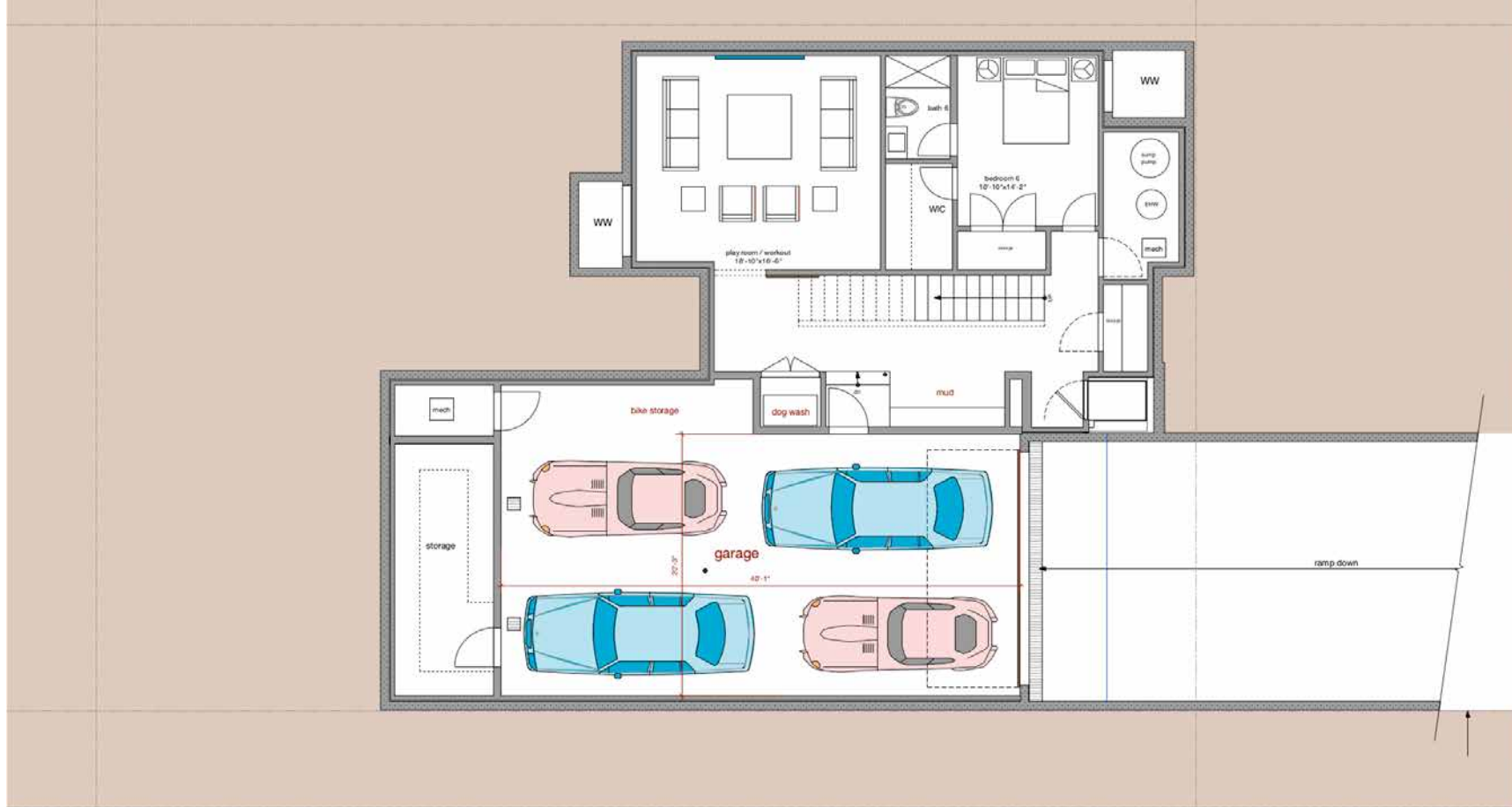
While every attempt has been made to ensure the accuracy of the floorplan contained here, measurements of doors, windows and rooms are approximate and no responsibility is taken for any omission or mis-statement. These plans are for visual representation purposes only and should be used as such by any prospective purchaser. Floor plan is not an architectural as-built and square footage numbers provided by the architect. Only those items specified in the contract of sale convey. Floor plan may not be transferred or sold. It is for the exclusive use of Patrick T. Brown and the Patrick Brown Group.

Floor Plans by Ali Gidfar of Pace Development, (303) 484-9200, ali@pacedevelopment.us

COMPASS

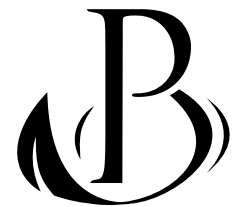
# 1860 BLUEBELL AVENUE | BOULDER, CO

## BASEMENT/GARAGE



Offered Exclusively by

Patrick T. Brown  
Patrick Brown Group/Compass  
303-242-6012  
[patrick@patrickbrowngroup.com](mailto:patrick@patrickbrowngroup.com)  
[www.patrickbrowngroup.com](http://www.patrickbrowngroup.com)



PATRICK BROWN  
GROUP

COMPASS

While every attempt has been made to ensure the accuracy of the floorplan contained here, measurements of doors, windows and rooms are approximate and no responsibility is taken for any omission or mis-statement. These plans are for visual representation purposes only and should be used as such by any prospective purchaser. Floor plan is not an architectural as-built and square footage numbers provided by the architect. Only those items specified in the contract of sale convey. Floor plan may not be transferred or sold. It is for the exclusive use of Patrick T. Brown and the Patrick Brown Group.

Floor Plans by Ali Gidfar of Pace Development, (303) 484-9200, [ali@pacedevelopment.us](mailto:ali@pacedevelopment.us)



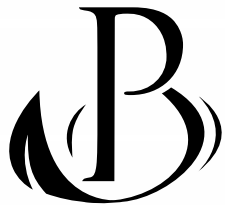
# 1860 BLUEBELL AVENUE | BOULDER, CO

## LANDSCAPE PLAN

NOT FOR CONSTRUCTION

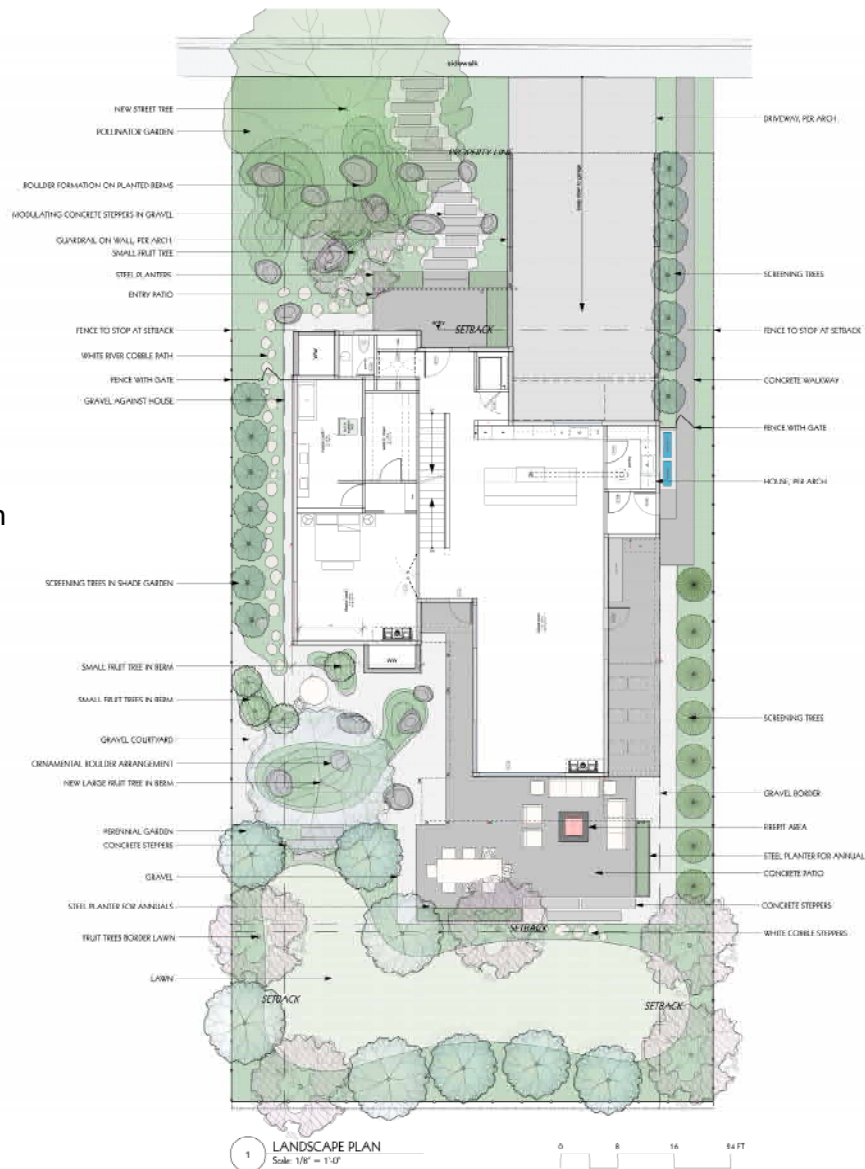
Offered Exclusively by

Patrick T. Brown  
Patrick Brown Group/Compass  
303-242-6012  
patrick@patrickbrowngroup.com  
www.patrickbrowngroup.com



PATRICK BROWN  
GROUP

COMPASS



1 LANDSCAPE PLAN  
Scale: 1/8" = 1'-0"

### LEGEND

COBBLE	CONCRETE - STAIN/PAINT	CONTOUR - PROPOSED	FENCE	FLAGSTONE	LAWN	OUTDOOR KITCHEN	PERMEABLE PAVING	WALL	STEEL
CONCRETE - DECORATIVE	CONTOUR - EXISTING	DECK	FIRE PIT	GRAVEL	NATIVE SEED	PLANTING BED / MULCH	PROPERTY LINE	WATER FEATURE	



MARPA

landscape architecture  
+ construction

1539 Pearl St.  
Boulder, Colorado 80302  
p: 720.470.8920  
e: luke@marpa.com  
www.marpa.com

PROJECT CONTACT:  
Julia Dullen  
julia@marpa.com  
720.355.4030

ISSUE:  
5 - Schematic Design

REVISION:

Gidfar | Zirakzadeh  
1860 Bluebell  
Boulder, CO 80302

DRAWING:  
Landscape Materials Plan

SHEET: L1.01

DATE: 8/7/21

DRAWN BY: JED

CHECKED BY: LPS

COPYRIGHT:  
2021 MARPA  
ALL RIGHTS RESERVED

While every attempt has been made to ensure the accuracy of the floorplan contained here, measurements of doors, windows and rooms are approximate and no responsibility is taken for any omission or mis-statement. These plans are for visual representation purposes only and should be used as such by any prospective purchaser. Floor plan is not an architectural as-built and square footage numbers provided by the architect. Only those items specified in the contract of sale convey. Floor plan may not be transferred or sold. It is for the exclusive use of Patrick T. Brown and the Patrick Brown Group.

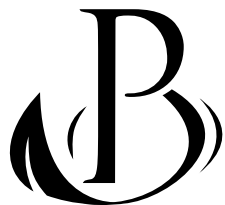
Floor Plans by Ali Gidfar of Pace Development, (303) 484-9200, ali@pacedevelopment.us

## LANDSCAPE PLAN

[illegible]

	QTY	COMMON NAME	BOTANICAL NAME	SCHEDULE SIZE	HIGHT	SPREAD	WATER RANGE	COMMENTS
Groundcover	13	Amelia's Star	<i>Setaria verticillata</i> Prostrata	2-3'	6-10"	12-18"	Low	Round up to nearest F20
	40	Bevinia Tenaxata	<i>Veronica stricta</i> Tenaxa	2-3'	4-6"	12-18"	Low to Medium	Round up to nearest F20
	40	Centaria tenuis	<i>Centaria tenuis</i>	2-3'	4-6"	12-24"	Low	Round up to nearest F20
	40	Lomandra limicola	<i>Lomandra limicola</i> lvs.	1-3'	0-6"	18-24"	Low	Round up to nearest F20
	40	Wills Creeper	<i>Thymelaeaceae Wills Creeper</i>	2-3'	1-2"	12-18"	Low	Round up to nearest F20
	40	Mulla-lvs Plant	<i>Thymelaeaceae mulla-lvs</i>	2-3'	1-2"	12-18"	Low	Round up to nearest F20
Ornamental Grasses	95	Blue Plume Grass	<i>Heteropogon compressus</i>	#1	0-5.5'	10-10.5'	Low	
	95	Blue Star Grass	<i>Stylidium lineare</i> Blue Star	#1	0-8.5'	6-9.5'	Low	
	95	Kat Grass	<i>Chlorophytum viridula</i> Kat Grasses	#1	0-5.5'	10-20"	Low	
	95	Plume Grass	<i>Stylidium latifolium</i>	#1	90-80.0"	70-75.0"	Low	
	95	Uncommon Ruby Grass	<i>Chlorophytum unicum</i> Uncommon	#1	12-50.0"	18-24.0"	Low	
Perennials	2	Pinkie/Pinkie Niece	<i>Nyssa himalaica</i> Cuckles Travel	#1	2-3'	3-4'	Low	
	19	Amelia's Star	<i>Setaria Verticillata</i>	#1	18-24"	12-18"	Low	
	19	Black-Eyed Grass	<i>Centaria tenuis</i> Black-Eyed	#1	18-24"	18-24"	Low	
	13	Blue Aster	<i>Aster</i>	#1	2-4.5'	15-24"	Low	
	13	Cardinalis Star	<i>Salvia nemoralis</i> Cardinals	#1	10-15'	10-18"	Low	
	14	Blue Indigo	<i>Salvia nemoralis</i>	#1	4-5.5'	9-15"	Low	
	98	Golden Ruby Goldenrod	<i>Solidago Golden Ruby</i>	#1	3-15'	18-24"	Low	
	98	Goldenrod Goldenrod	<i>Solidago nemoralis</i> Goldenrod	#1	14-18"	15-18"	Low	
	98	Little Lady	<i>Nemora</i> Little Lady	#1	9-12"	10-18"	Low	
	10	Verbena Canadensis	<i>Verbena canadensis</i> Verbena	#1	18-24"	10-24"	Low	
	95	Marine Blue Star	<i>Stylidium Blue Star</i>	#1	8-10"	18-18"	Low	
	40	Ornamental Cornflower	<i>Antirrhinum Cornflower</i>	#1	24-30.0"	17-24.0"	Low	
	95	Star-Spike Star Spike	<i>Stylidium Star Spike</i>	#1	17-18"	18-24"	Low	
	95	Star-Jewel Perennials	<i>Perennials Star-Jewel</i>	#1	0-5.5'	10-18"	Low	
	117	Star-Jewel Perennials	<i>Perennials Star-Jewel</i>	#1	18-24"	18-18"	Low	
	95	Plume Grass	<i>Stylidium compressus</i>	#1	18-18"	18-18"	Low	
	40	Purple Plume Grass	<i>Stylidium purpureum</i>	#1	0-2.5'	0-2.5'	Low	
	14	Rock-Mountain Columbine	<i>Adonis nemoralis</i> Rock-Mountain	#1	24-24"	18-18"	Medium	
	14	Ruby Star Columbine	<i>Adonis nemoralis</i> Ruby Star	#1	24-24"	24-24.0"	Low	
	19	Sonnen Sweet Hesperis	<i>Aquilegia nemoralis</i> Sonnen Sweet	#1	15-18"	10-13"	Low	
	19	Willing Hesperis	<i>Adonis nemoralis</i> Willing Hesperis	#1	0-5'	18-24"	Low	
Shrub	5	Dwarf Noddy	<i>Physocarpus opulifolius</i> Dwarf	#5	4-5.5'	4-5.5'	Low	
	8	Ten Choke Blue Vine Sower	<i>Clematis nemoralis</i> Ten Choke	#5	0-15"	18-24.0"	Low	
	8	Viburnum May Tree	<i>Viburnum May Tree</i>	#5	2-5.5'	2-5.5'	Low	
	6	Maya Noddy	<i>Physocarpus nemoralis</i>	#5	2-4.5'	2-4.5'	Low	
Trees	1	Catalpa Tree	<i>Platanus catalpa</i> Catalpa	F 1-1.5' x 3.0"	30-40.0'	30-30.0'	Medium	
	5	Chastetree Tree	<i>Leucodermis Chastetree</i>	10-12.0' x 3.0"	30-30.0'	15-20.0'	Medium	
	14	Parasitic Tree	<i>Parasitic tree</i> Parasitic	10-12.0' x 3.0"	12-13.0'	5-10.0'	Medium	
	8	Parasitic Callifera	<i>Parasitic tree</i> Callifera	12-12.0' x 3.0"	30-30.0'	40-30.0'	Low	
	10	Parasitic Tree Callifera Tree	<i>Parasitic tree</i> Callifera Tree	12-12.0' x 3.0"	30-30.0'	10-12.0'	Low	
	8	Parasitic Tree	<i>Parasitic tree</i> Parasitic	10-12.0' x 3.0"	11-13.0'	4-6"	Low	
	8	Parasitic Tree Callifera	<i>Parasitic tree</i> Callifera	12-12.0' x 3.0"	30-30.0'	10-12.0'	Low	
	4	Parasitic Tree Callifera	<i>Parasitic tree</i> Callifera	12-12.0' x 3.0"	4-6"	4-6"	Low	

Scale: 1" = 100' 0"



Offered Exclusively by Patrick T. Brown  
Patrick Brown Group/Compass  
303-242-6012  
patrick@patrickbrowngroup.com  
www.patrickbrowngroup.com

Floor Plans by Ali Gidfar of Pace Development, (303) 484-9200, [ali@pacedevelopment.us](mailto:ali@pacedevelopment.us)

Gidfar | Zirakzadeh  
1860 Bluebell  
Boulder, CO 80302

COPYRIGHT:

# COMPASS