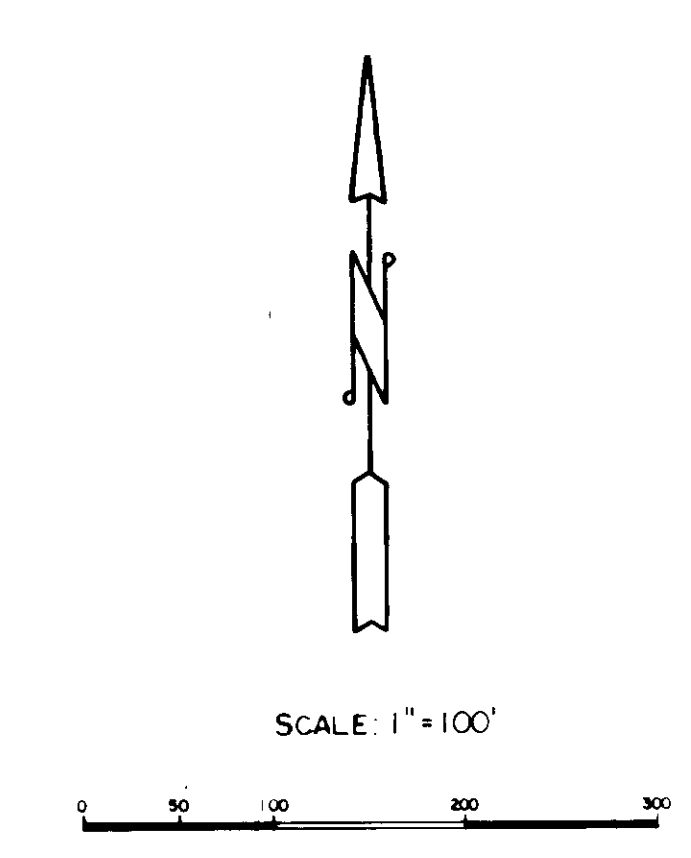
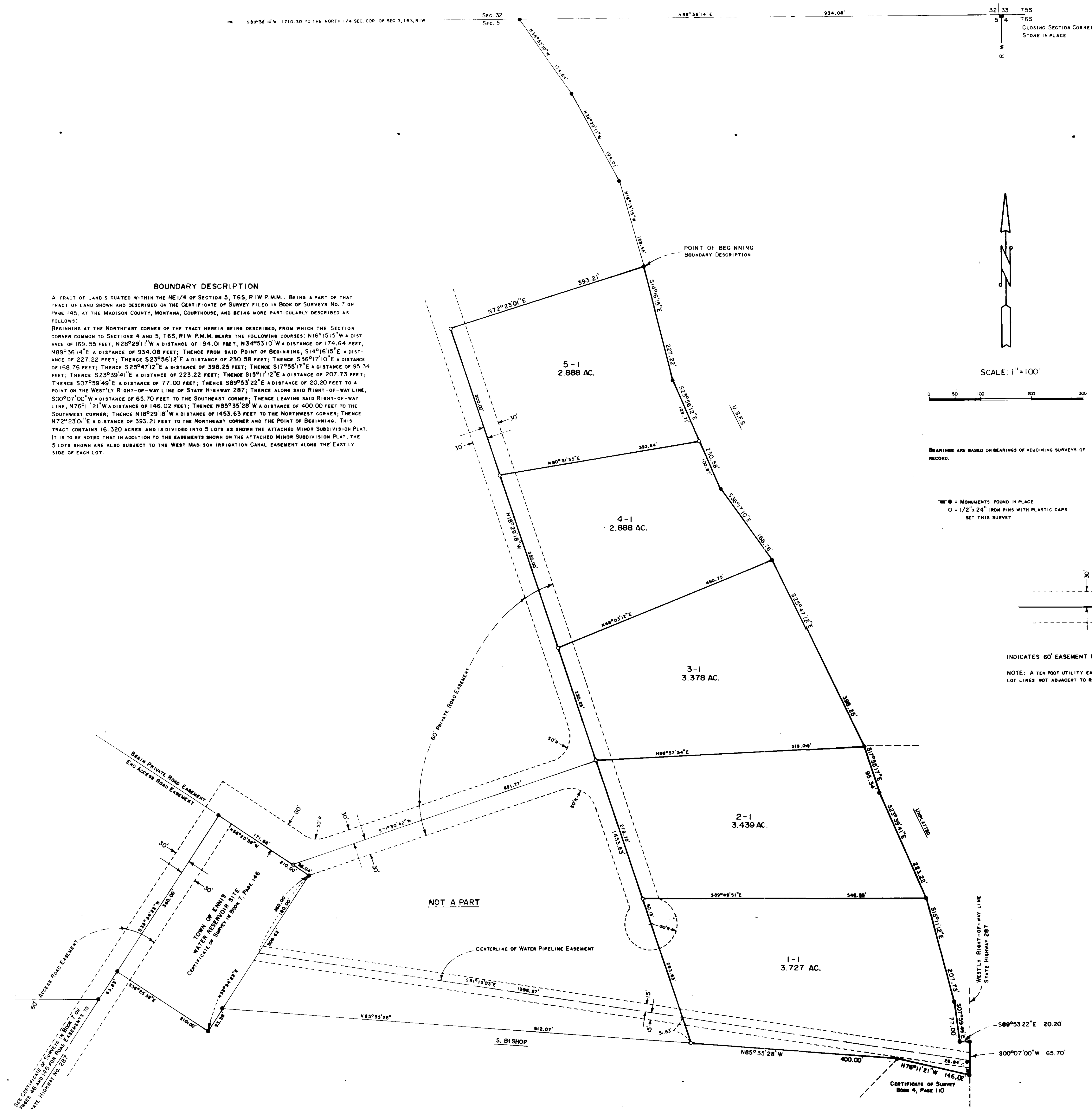


PLAT OF ANTELOPE MEADOWS NO. 1

NE1/4, SECTION 5, T6S, RIW P.M.M.
MADISON COUNTY, MONTANA
(A MINOR SUBDIVISION)

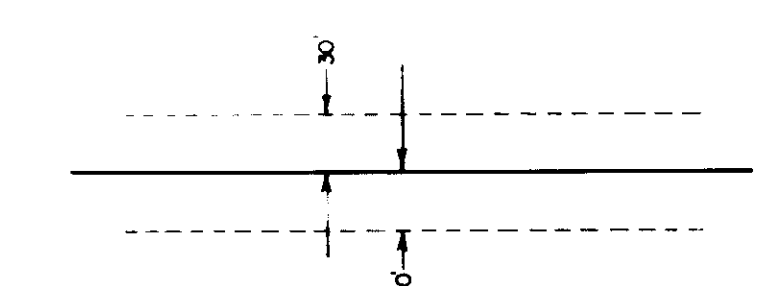
PREPARED FOR
ANTELOPE MEADOWS
A LIMITED PARTNERSHIP
BY THE GENERAL PARTNER

BOUNDARY DESCRIPTION
A TRACT OF LAND SITUATED WITHIN THE NE1/4 OF SECTION 5, T6S, RIW P.M.M., BEING A PART OF THAT TRACT OF LAND SHOWN AND DESCRIBED ON THE CERTIFICATE OF SURVEY FILED IN BOOK OF SURVEYS NO. 7 ON PAGE 145, AT THE MADISON COUNTY, MONTANA, COURTHOUSE, AND BEING MORE PARTICULARLY DESCRIBED AS FOLLOWS:
BEGINNING AT THE NORTHEAST CORNER OF THE TRACT HEREIN BEING DESCRIBED, FROM WHICH THE SECTION CORNER COMMON TO SECTIONS 4 AND 5, T6S, RIW P.M.M. BEARS THE FOLLOWING COURSES: N16°15'15" W A DISTANCE OF 169.55 FEET; N28°29'11" W A DISTANCE OF 194.01 FEET; N34°53'10" W A DISTANCE OF 174.64 FEET; N89°36'47" E A DISTANCE OF 334.08 FEET; THENCE FROM SAID POINT OF BEGINNING, S14°16'15" E A DISTANCE OF 227.22 FEET; THENCE S23°56'12" E A DISTANCE OF 230.58 FEET; THENCE S36°17'10" E A DISTANCE OF 168.76 FEET; THENCE S25°47'12" E A DISTANCE OF 398.25 FEET; THENCE S17°55'17" E A DISTANCE OF 95.34 FEET; THENCE S23°39'41" E A DISTANCE OF 223.22 FEET; THENCE S15°11'12" E A DISTANCE OF 207.73 FEET; THENCE S07°59'49" E A DISTANCE OF 77.00 FEET; THENCE S89°53'22" E A DISTANCE OF 20.20 FEET TO A POINT ON THE WESTLY RIGHT-OF-WAY LINE OF STATE HIGHWAY 287; THENCE ALONG SAID RIGHT-OF-WAY LINE, S00°07'00" W A DISTANCE OF 65.70 FEET TO THE SOUTHWEST CORNER; THENCE LEAVING SAID RIGHT-OF-WAY LINE, N76°11'21" W A DISTANCE OF 146.02 FEET; THENCE N85°35'28" W A DISTANCE OF 400.00 FEET TO THE SOUTHWEST CORNER; THENCE N18°29'18" W A DISTANCE OF 1453.63 FEET TO THE NORTHWEST CORNER; THENCE N72°23'01" E A DISTANCE OF 393.21 FEET TO THE NORTHEAST CORNER AND THE POINT OF BEGINNING. THIS TRACT CONTAINS 16.320 ACRES AND IS DIVIDED INTO 5 LOTS AS SHOWN ON THE ATTACHED MINOR SUBDIVISION PLAT. IT IS TO BE NOTED THAT IN ADDITION TO THE EASEMENTS SHOWN ON THE ATTACHED MINOR SUBDIVISION PLAT, THE 5 LOTS SHOWN ARE ALSO SUBJECT TO THE WEST MADISON IRRIGATION CANAL EASEMENT ALONG THE EASTLY SIDE OF EACH LOT.



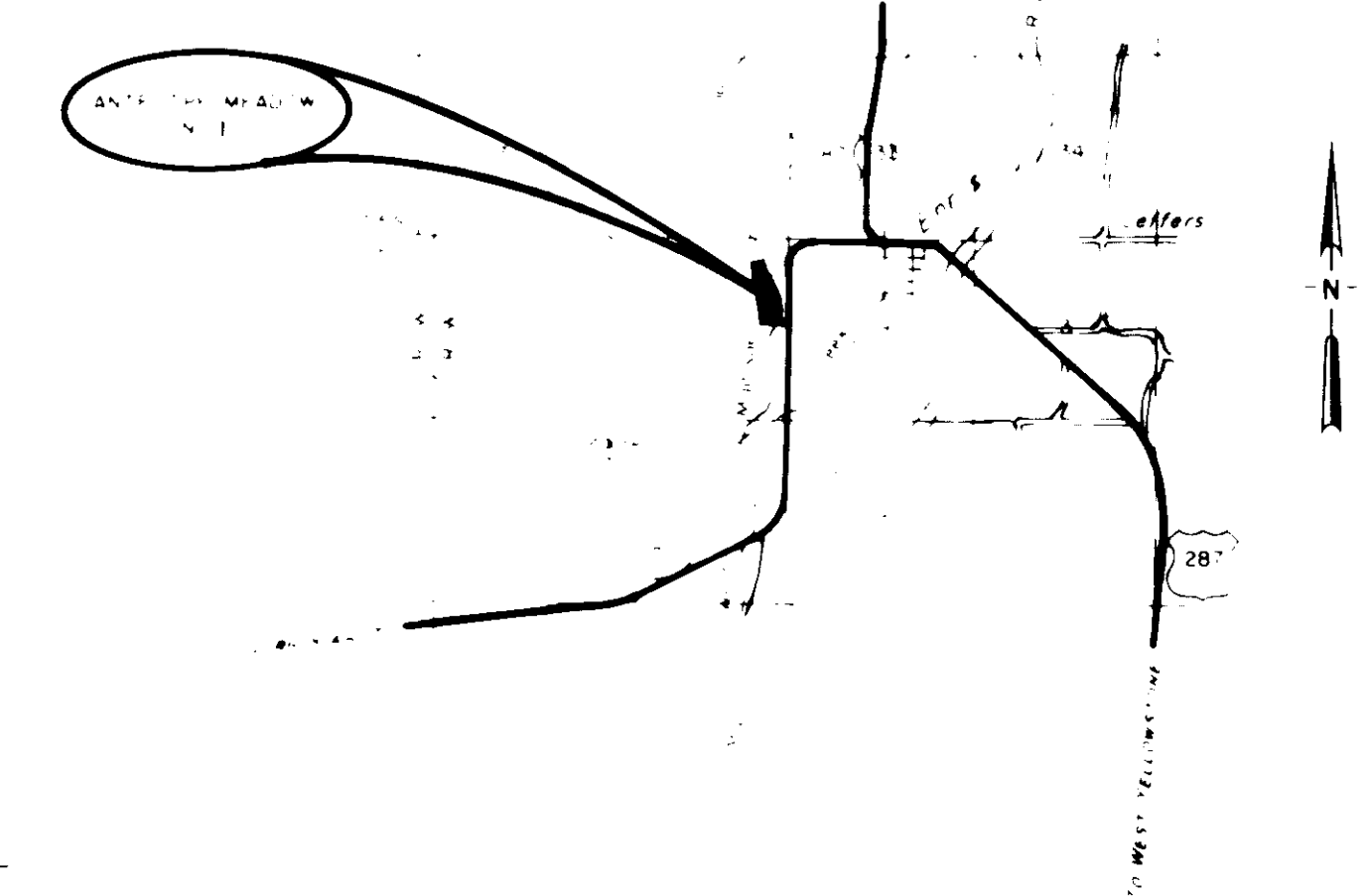
BEARINGS ARE BASED ON BEARINGS OF ADJOINING SURVEYS OF RECORD.

MONUMENTS FOUND IN PLACE
1/2" x 1/2" IRON PINS WITH PLASTIC CAPS SET THIS SURVEY



INDICATES 60' EASEMENT FOR ROADWAY AND UTILITY PURPOSES

NOTE: A TEN FOOT UTILITY EASEMENT IS RESERVED ON EACH SIDE OF ALL LOT LINES NOT ADJACENT TO ROADWAY EASEMENTS.



The within plat was approved by the Madison County Department of Planning, this 22 day of May 1978.
Shirley A. ...
Chairman, Madison County Dept. of Planning

LOHRAINE E. MOLLISON, Clerk of Madison County, Montana, do certify that the following order was made by the County Board of Commissioners at a meeting thereof held on the 23 day of MAY 1978, and entered on the minutes of the Board of Commissioners, inasmuch as the dedication of park land within the platted area of ANTELOPE MEADOWS NO. 1, as shown on the bearing and distance plat, in the minutes of this meeting, it is hereby ordered by the County Commissioners that the said park land be dedicated to the public use of the County of Madison, Montana, in the amount of \$1,222.67 dollars (\$1,222.67) to be paid out of the proceeds of the sale of the parcels of Sections 11-3859 through 11-3876 of the Revised Codes of Montana, 1973.
IN WITNESS WHEREOF, I have hereunto set my hand and the seal of Madison County, Montana this 23 day of MAY 1978.
Lohraine E. Mollison
Recorder

THE COUNTY COMMISSIONERS OF MADISON COUNTY, MONTANA, HEREBY CERTIFY THAT IT HAS EXAMINED THIS MINOR SUBDIVISION PLAT AND HAVING FOUND THE SAME TO CONFORM TO AN APPROVAL OF THE 23 DAY OF MAY 1978.
ATTEST:
Lohraine E. Mollison
Recorder
Charles Raymond
Member

STATE OF MONTANA
COUNTY OF MADISON
FILED ON THE 23 DAY OF MAY A.D. 1978 AT 11:00 O'CLOCK A.M. IN BOOK 4 OF PLATS
PAGE 129
Lohraine E. Mollison
Recorder
By _____ Deputy

David E. Bowman
DAVID E. BOWMAN, REG. LAND SURVEYOR NO. 3097 S
001178 FEBRUARY 27, 1978

EXAMINED AND APPROVED, this 13 day of March 1978
Earl R. Best
REG. NO. 77965
EXAMINING LAND SURVEYOR

See: LIEBOWITZ COUNTY PLANNING PLAT, BOOK 288, PAGE 313.
SEE DEPT. BOOK PAGE SEE APP. DAY 1 BOOK PAGE SEE DEPT. OF HEALTH APPROVAL, BOOK 258, PAGE 314-215.