

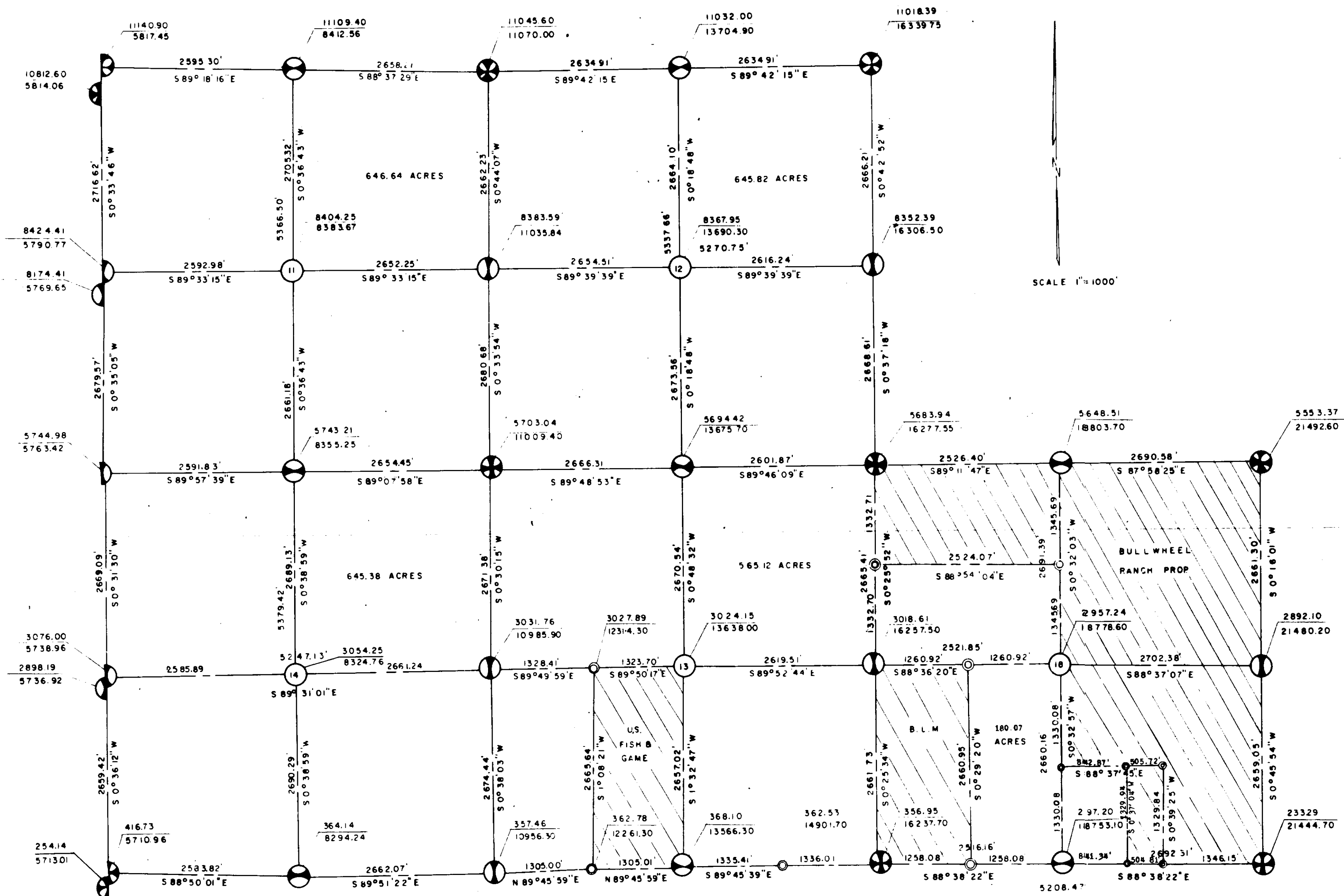
Book 4, Page 41-46

Page 41

# A PORTION OF THE SHINING MOUNTAINS

A SUBDIVISION

SITUATED IN SEC. 11, 12, THE N 1/2, W 1/2 SW 1/4, SE 1/4 OF SEC. 13 & SEC. 14, T.7S., R.2W.; THE S 1/2 NW 1/4, E 1/2 SW 1/4, SW 1/4 SE 1/4 OF SEC. 18, T.7S., R.1W., P.M.M., MADISON COUNTY MONTANA



SCALE 1"=1000'



### CERTIFICATE OF SURVEY

I, RICK A. THOMPSON, A LAND SURVEYOR REGISTERED UNDER THE LAWS OF THE STATE OF MONTANA DO HEREBY CERTIFY THAT I HAVE MADE THE SURVEY SHOWN ON THE ATTACHED PLAT AND THAT THIS SURVEY IS CORRECT AS DESCRIBED BY THIS PLAT; IN WITNESS WHEREOF, I HAVE SET MY HAND AND SEALED.

*Rick A. Thompson*  
 MONTANA REG. #3498 S  
 REGISTERED PROFESSIONAL LAND SURVEYOR  
 221 EAST MENDEHALL, BOZEMAN, MONTANA

### CERTIFICATE OF COUNTY COMMISSIONERS

THE WITHIN PLAT IS APPROVED AFTER INSPECTION PROVIDED BY SECTIONS 11-614, REVISED CODES OF MONTANA, 1947, AS AMENDED THIS 6<sup>TH</sup> DAY OF JANUARY, 1972. BOARD OF COUNTY COMMISSIONERS OF MADISON COUNTY

46541

*Charles Raymond*  
 CHAIRMAN  
*Walter H. Hagan*  
 MEMBER  
*Douglas Allen*  
 MEMBER

RECORDED'S OFFICE  
 Madison County, Montana  
 Filed: 6 January 1972  
 at 11:45 a.m.  
*James R. Mott*  
 County Recorder  
 By \_\_\_\_\_  
 Fee \$ 73

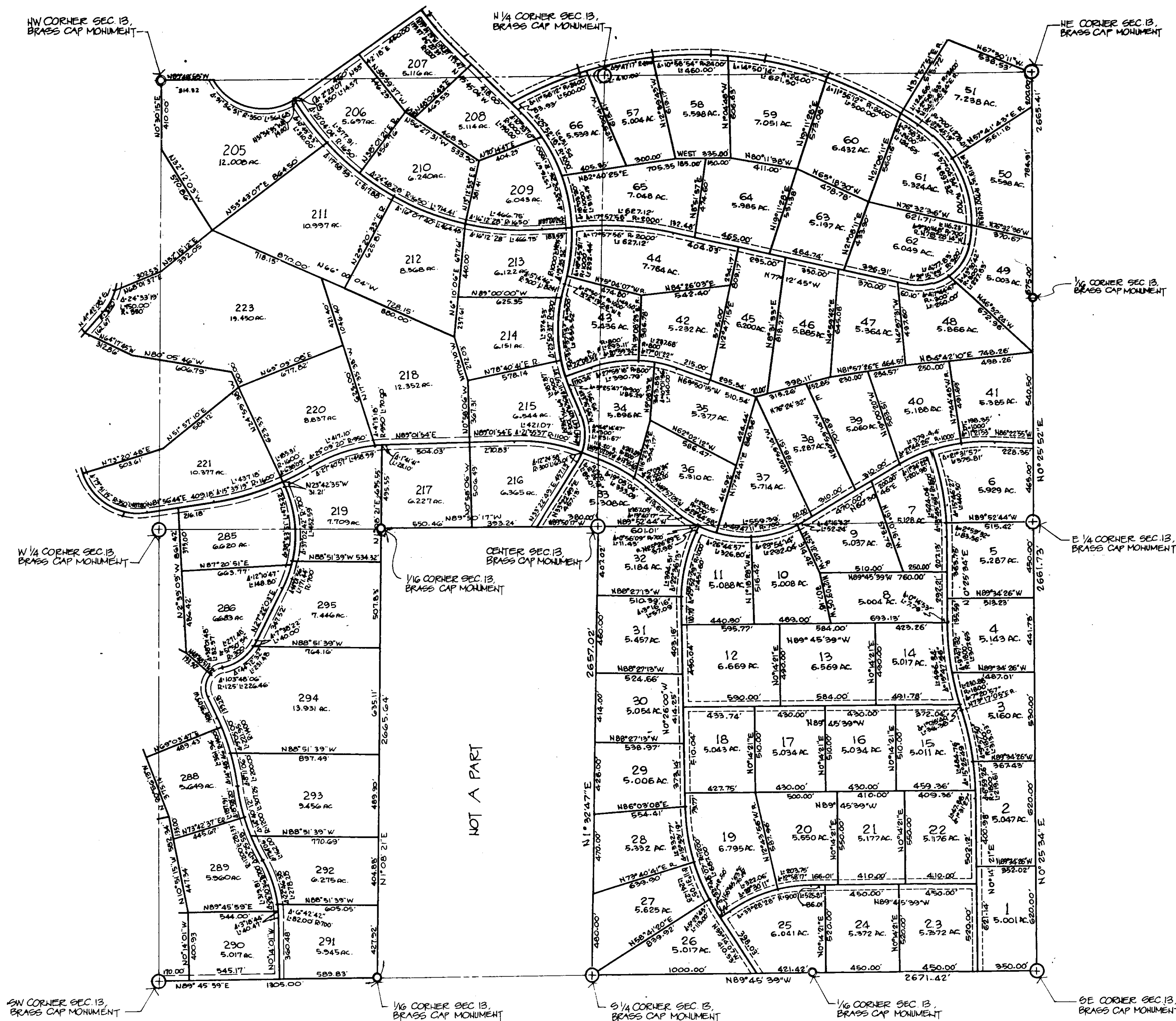
Plat Book 4, Pg 41-46.

JAN 3 1972 Page 41

# A PORTION OF THE SHINING MOUNTAINS A SUBDIVISION

SITUATED IN SEC. 11, 12, THE N 1/2, W 1/2 SW 1/4, SE 1/4 OF SEC. 13  
& SEC. 14, T.7.S., R.2.W.; THE S 1/2 NW 1/4, E 1/2 SW 1/4, SW 1/4 SE 1/4  
OF SEC. 18, T.7.S., R.1.W., P.M.M., MADISON COUNTY MONTANA

SEE SHEET NO. 3



SEE SHEET NO. 5

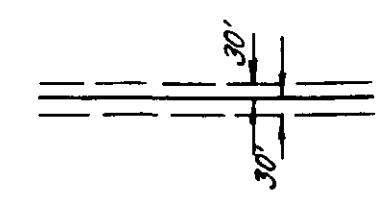
SEE SHEET NO. 6

46541

RECORDER'S OFFICE  
Madison County, Montana  
Filed 6 JANUARY 1972  
11:45 o'clock A.M.  
*Jessie R. Malter*  
County Recorder  
Fee \$ 73.20 Deputy

Plat Book # 6, Page 41-46

SCALE: 1" = 400'



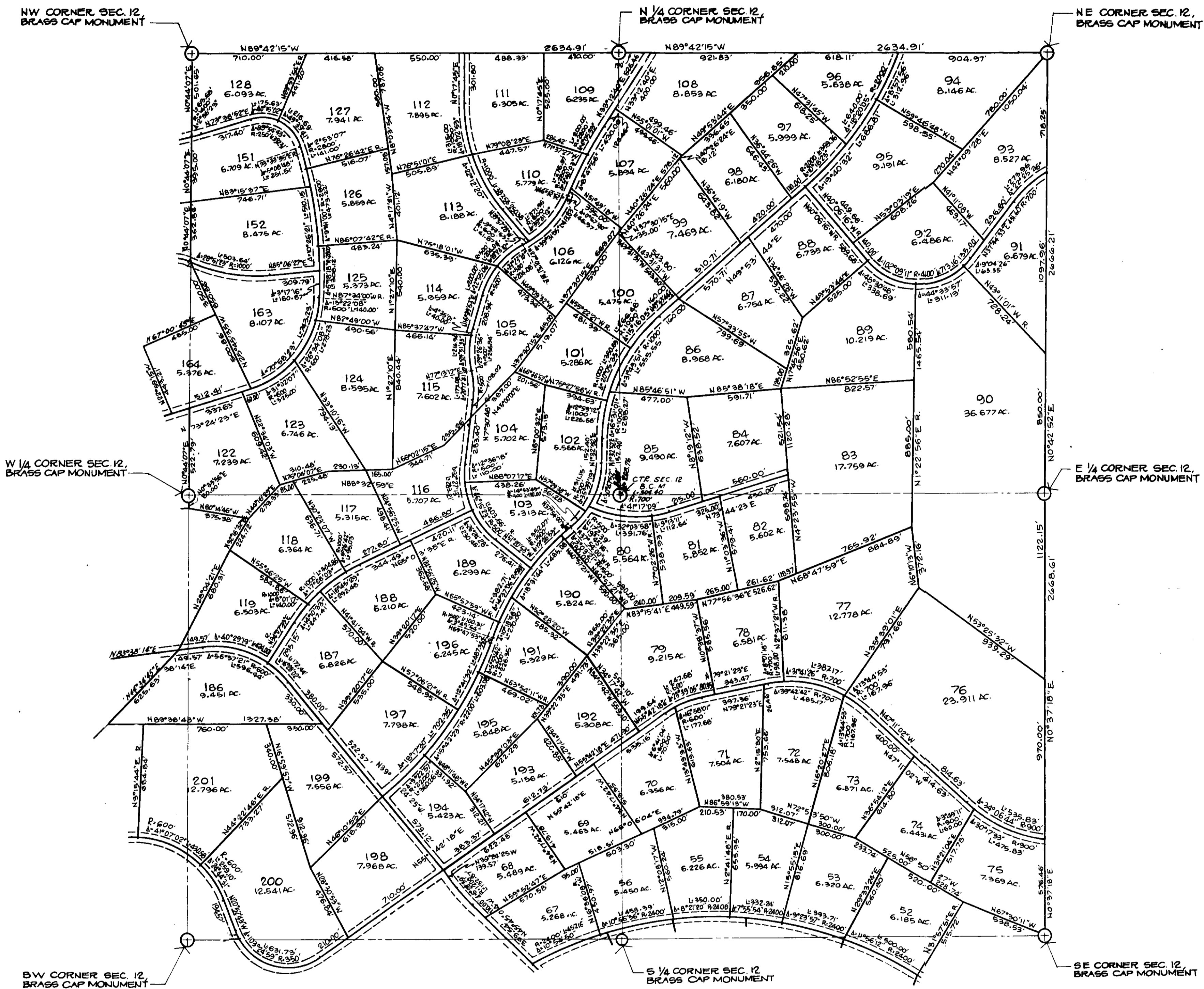
INDICATES 60' EASEMENT FOR ROADWAY PURPOSES

# A PORTION OF THE SHINING MOUNTAINS

A SUBDIVISION

SITUATED IN SEC. 11, 12, THE N 1/2, W 1/2 SW 1/4, SE 1/4 OF SEC. 13  
& SEC. 14, T.7S., R.2W.; THE S 1/2 NW 1/4, E 1/2 SW 1/4, SW 1/4 SE 1/4  
OF SEC. 18, T.7S., R.1W., P.M.M., MADISON COUNTY MONTANA

SEE SHEET NO. 4



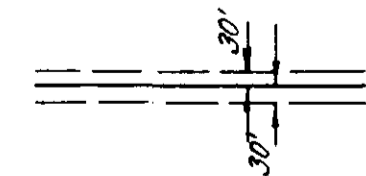
SEE SHEET NO. 2

46541

RECORDERS OFFICE  
Madison County, Montana  
Filed 6 January 1972  
at 11:45 o'clock A.M.  
By Jessie A. Moulder  
County Recorder  
Fee 23.70 Deputy

Plat Book 5, Page 41-46  
Should be "Plat Book 4  
Page 41-46"  
JPM - 1-18-84

SCALE: 1" = 400'

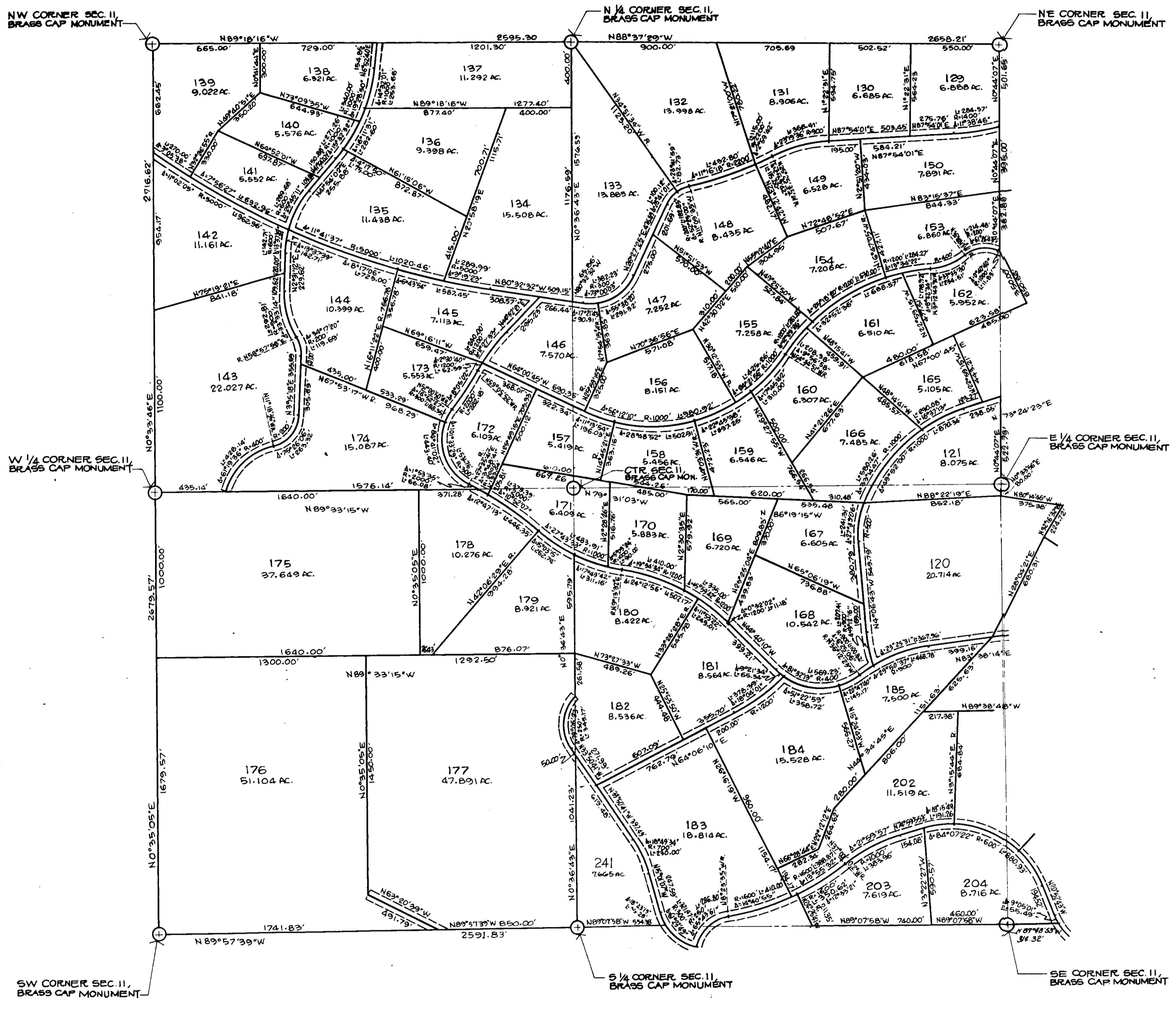
 INDICATES 60' EASEMENT  
FOR ROADWAY PURPOSES

Page 43

Page 44

# A PORTION OF THE SHINING MOUNTAINS A SUBDIVISION

SITUATED IN SEC. 11, 12, THE N 1/2, W 1/2 SW 1/4, SE 1/4 OF SEC. 13  
& SEC. 14, T.7S., R.2W.; THE S 1/2 NW 1/4, E 1/2 SW 1/4, SW 1/4 SE 1/4  
OF SEC. 18, T.7S., R.1W., P.M.M., MADISON COUNTY MONTANA



SEE SHEET NO. 3

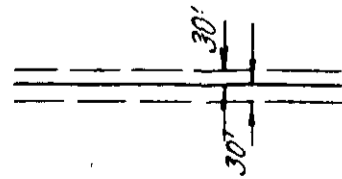
SEE SHEET NO. 5

46541

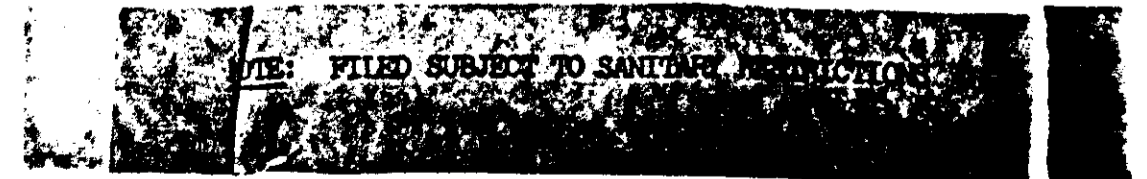
RECORDER'S OFFICE  
Madison County, Montana } ss.  
Filed 6 January 1972  
at 11:45 o'clock a.m.  
*Jessamine P. Mohler*  
County Recorder

Plat Book 4 - Page 41 - 46

SCALE: 1" = 400'



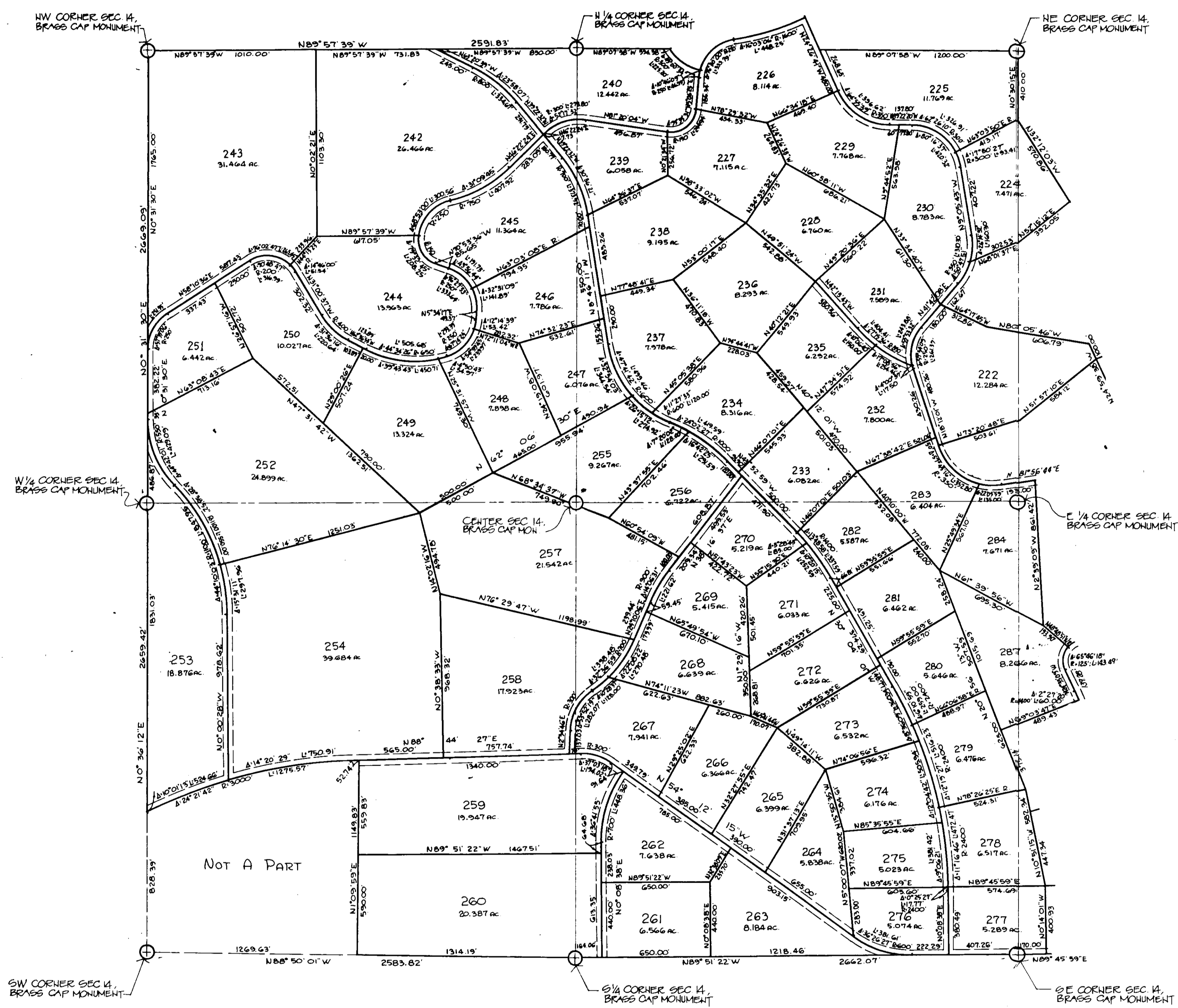
INDICATES 60' EASEMENT  
FOR ROADWAY PURPOSES



# A PORTION OF THE SHINING MOUNTAINS A SUBDIVISION

SITUATED IN SEC. 11, 12, THE N 1/2, W 1/2 SW 1/4, SE 1/4 OF SEC. 13  
& SEC. 14, T.7S., R.2W.; THE S 1/2 NW 1/4, E 1/2 SW 1/4, SW 1/4 SE 1/4  
OF SEC. 18, T.7S., R.1W., P.M.M., MADISON COUNTY MONTANA

SEE SHEET NO. 4



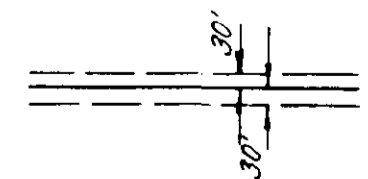
SEE SHEET NO. 2

46551

RECORDER'S OFFICE  
Madison County, Montana } 55  
 FILED 6 JANUARY 1972  
 11:45 a.m.  
*Joseline P. Miller*  
 County Recorder  
 Fee \$ 73.20 Deputy

Plot Book 4, Pages 41-46

SCALE: 1" = 400'

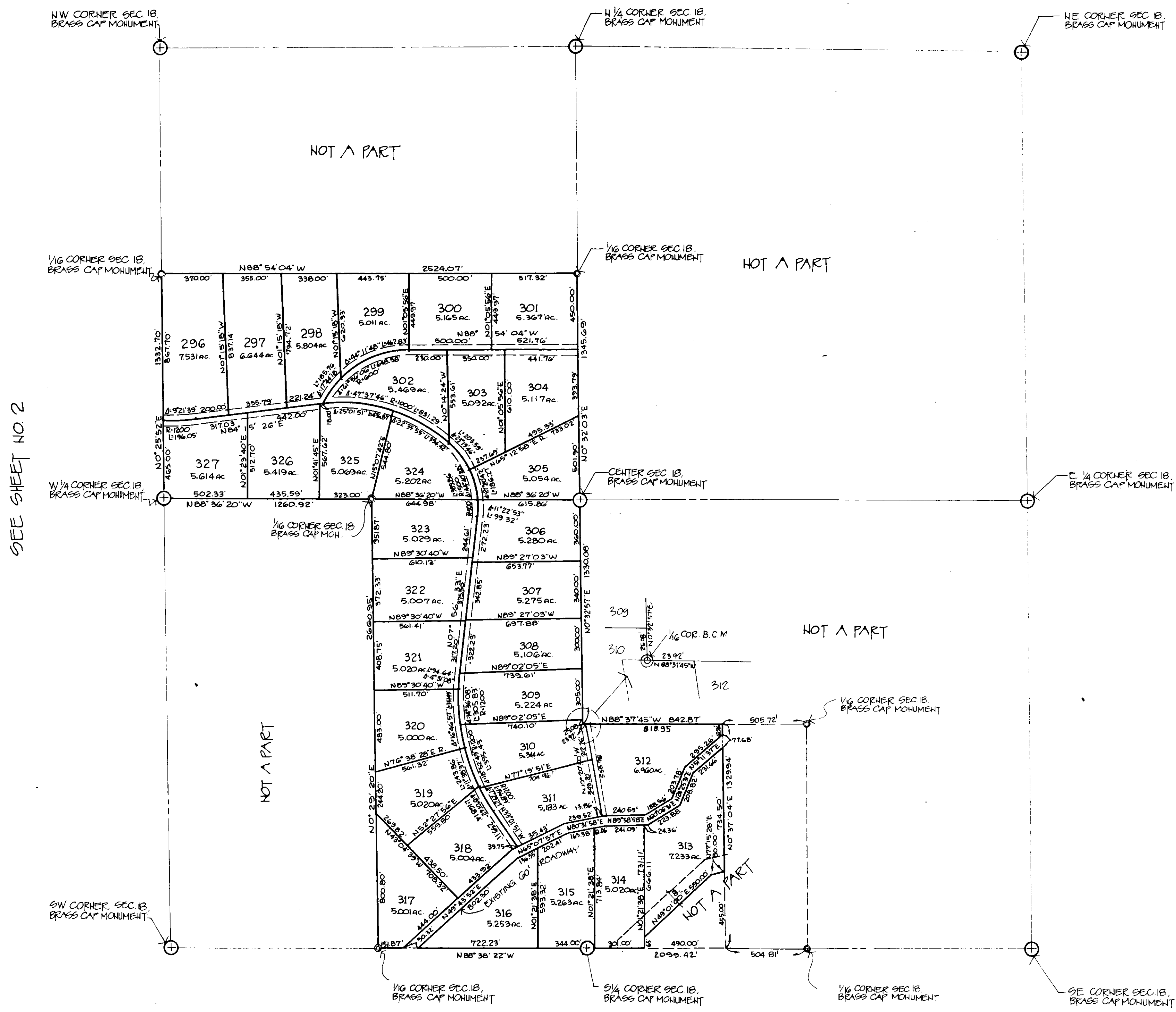


INDICATES 60' EASEMENT FOR ROADWAY PURPOSES



# A PORTION OF THE SHINING MOUNTAINS A SUBDIVISION

SITUATED IN SEC. 11, 12, THE N 1/2, W 1/2 SW 1/4, SE 1/4 OF SEC. 13  
& SEC. 14, T.7S., R.2W.; THE S 1/2 NW 1/4, E 1/2 SW 1/4, SW 1/4 SE 1/4  
OF SEC. 18, T.7S., R.1W., P.M.M., MADISON COUNTY MONTANA

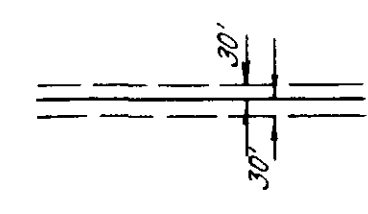


465-31

RECORDER'S OFFICE  
Madison County, Montana  
6 January 1972  
11:45 a.m.  
J. J. Madala  
County Recorder

73  
Plat. Book 4, Page 41-46

SCALE: 1" = 400'

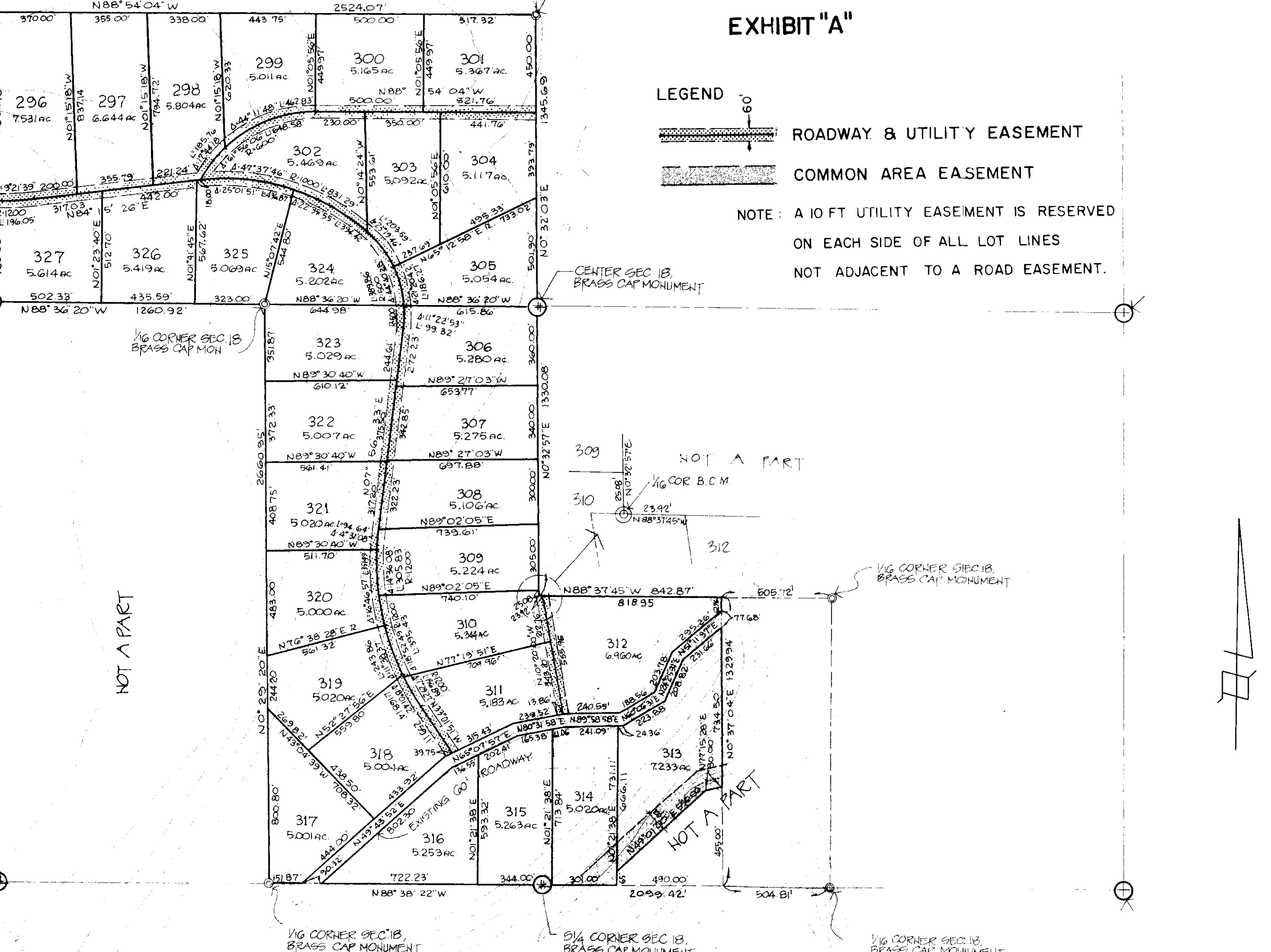
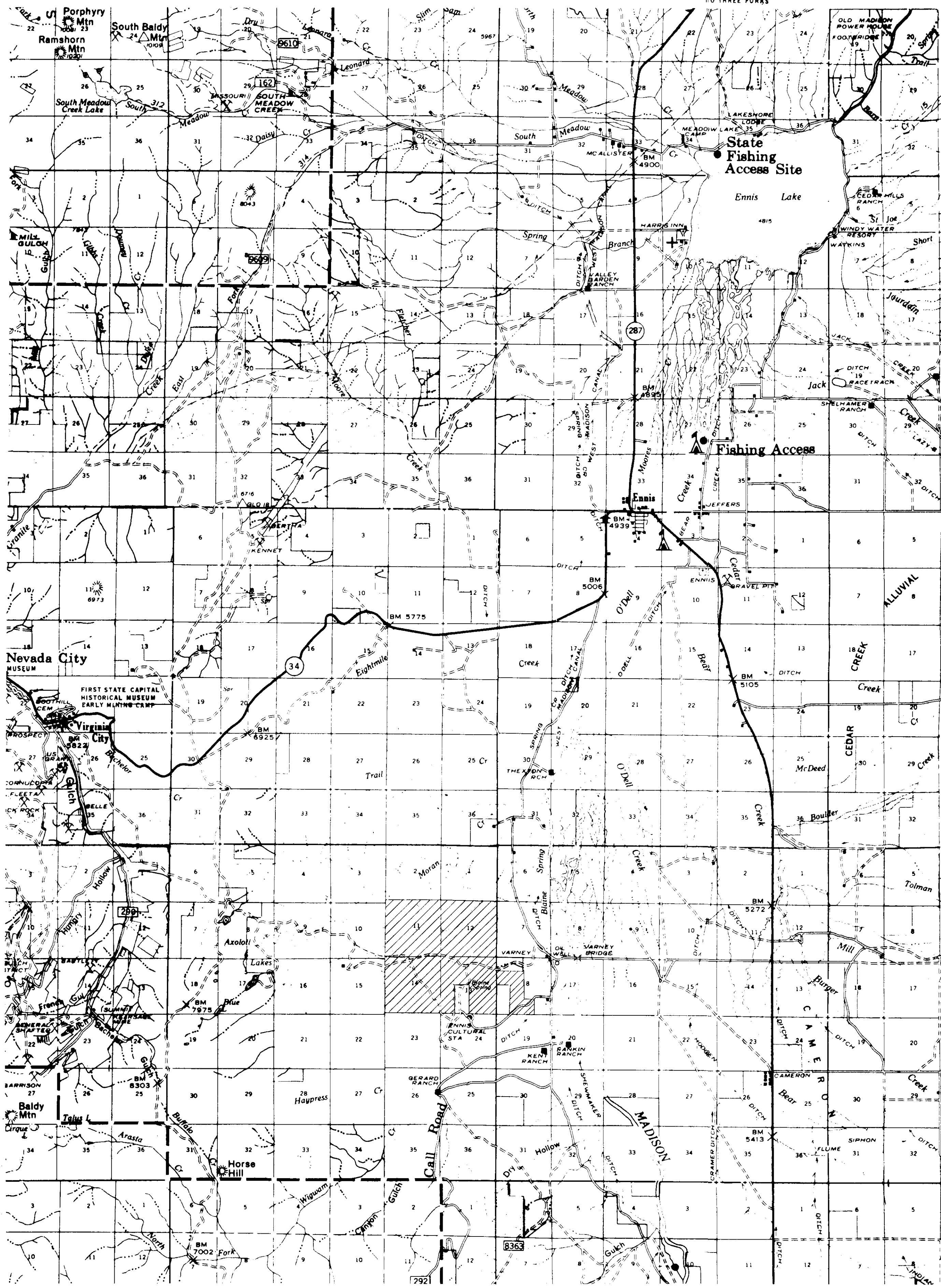
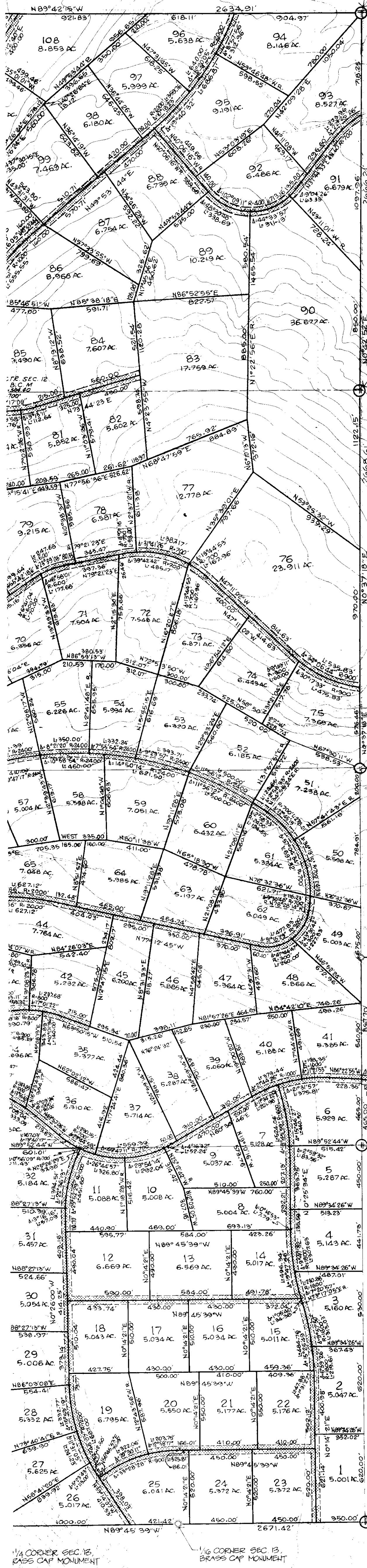


INDICATES 60' EASEMENT  
FOR ROADWAY PURPOSES



# SECTION OF SOUTH MOUNTAINS

N 1/4 CORNER SEC. 12,  
BRASS CAP MONUMENT



**CERTIFICATE OF SURVEYOR:**

I, FRED F. ERVIN, A REGISTERED CIVIL ENGINEER AND LAND SURVEYOR UNDER THE LAWS OF THE STATE OF CALIFORNIA, DO HEREBY CERTIFY THAT THIS PLAT HAS BEEN PREPARED UNDER MY DIRECTION AND THAT IT CORRECTLY SHOWS THE LOCATION OF THE UTILITY AND COMMON AREA EASEMENTS.

IN WITNESS WHEREOF, I HAVE SET MY HAND AND SEAL.

*Fred F. Ervin*  
CALIFORNIA REG. NO. 11932, REGISTERED CIVIL ENGINEER AND LAND SURVEYOR, STATE OF CALIFORNIA  
729 SOUTH PARK VIEW STREET, LOS ANGELES, CALIFORNIA.



APR 24 1972

ERVIN ENGINEERING & SURVEYING  
1000 WEST 10TH STREET, SUITE 100, LOS ANGELES, CALIFORNIA 90015  
TELEPHONE: (213) 481-1111

Page 42