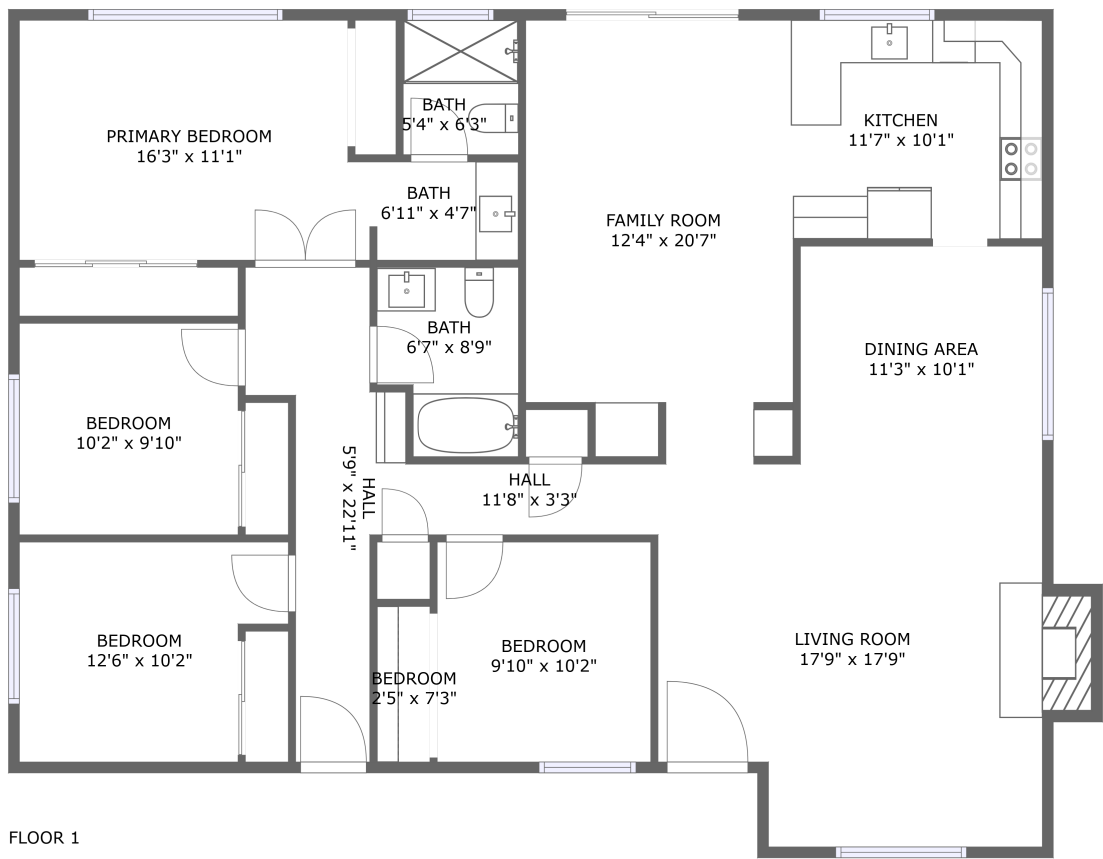


Home report

172 Smokey Hills Drive, Cimarron Hills, Vallejo, Solano County,
California, United States, 94589



Total Area: 1683 sq. ft
Floor 1: 1683 sq. ft
Excluded: Fireplace 15 sq. ft, Walls: 83 sq. ft

Property summary

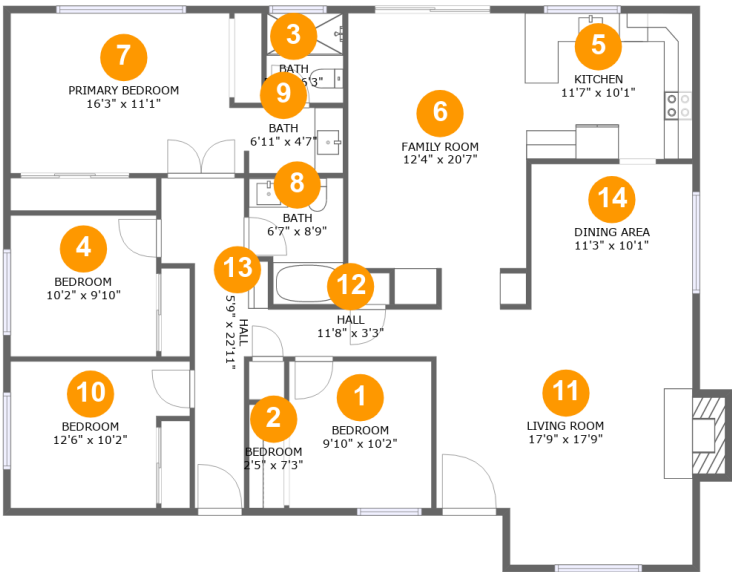
 **1** Floors

 **5** Bedrooms

 **2** Bathrooms

Home report

172 Smokey Hills Drive, Cimarron Hills, Vallejo, Solano County, California, United States, 94589



Room dimensions

Floor 1 Total:1683sqft Excluded: 15sqft

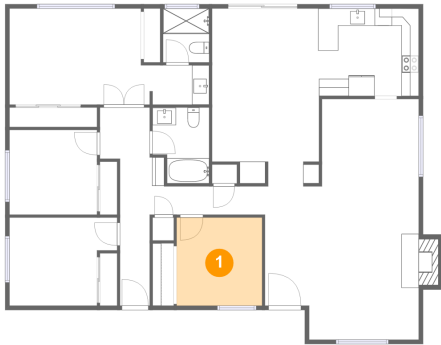
#		Max Dimensions	sqft	Included
1	Bedroom	9'10" x 10'2"	101 sq. ft	Yes
2	Bedroom	2'5" x 7'3"	18 sq. ft	Yes
3	Bath	5'4" x 6'3"	33 sq. ft	Yes
4	Bedroom	10'2" x 9'10"	99 sq. ft	Yes
5	Kitchen	11'7" x 10'1"	117 sq. ft	Yes
6	Family Room	12'4" x 20'7"	243 sq. ft	Yes
7	Primary Bedroom	16'3" x 11'1"	174 sq. ft	Yes
8	Bath	6'7" x 8'9"	52 sq. ft	Yes
9	Bath	6'11" x 4'7"	31 sq. ft	Yes
10	Bedroom	12'6" x 10'2"	112 sq. ft	Yes
11	Living Room	17'9" x 17'9"	308 sq. ft	Yes

Home report

172 Smokey Hills Drive, Cimarron Hills, Vallejo, Solano County,
California, United States, 94589

#		Max Dimensions	sqft	Included
12	Hall	11'8" x 3'3"	38 sq. ft	Yes
13	Hall	5'9" x 22'11"	104 sq. ft	Yes
14	Dining Area	11'3" x 10'1"	113 sq. ft	Yes

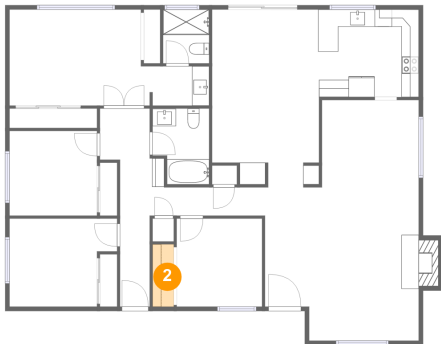
1 Floor 1 - Bedroom



Max Dimensions: 9'10" x 10'2"
Calculated Area: 101 sq. ft
Included: Yes

Heated: Yes
Finished: Yes
Enclosed: Yes
Contiguous: Yes
Permitted: Yes
Wet space: No
Addition: No
Conversion: No

2 Floor 1 - Bedroom



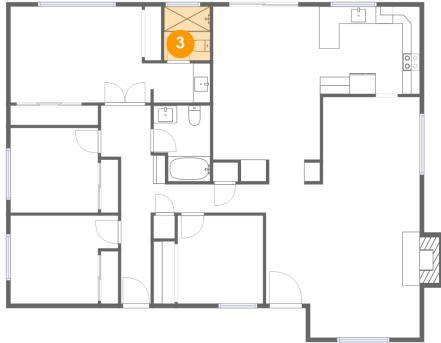
Max Dimensions: 2'5" x 7'3"
Calculated Area: 18 sq. ft
Included: Yes

Heated: Yes
Finished: Yes
Enclosed: Yes
Contiguous: Yes
Permitted: Yes
Wet space: No
Addition: No
Conversion: No

Home report

172 Smokey Hills Drive, Cimarron Hills, Vallejo, Solano County,
California, United States, 94589

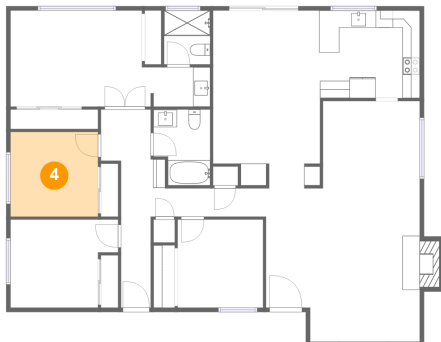
3 Floor 1 - Bath



Max Dimensions: 5'4" x 6'3"
Calculated Area: 33 sq. ft
Included: Yes

Heated: Yes
Finished: Yes
Enclosed: Yes
Contiguous: Yes
Permitted: Yes
Wet space: Yes
Addition: No
Conversion: No

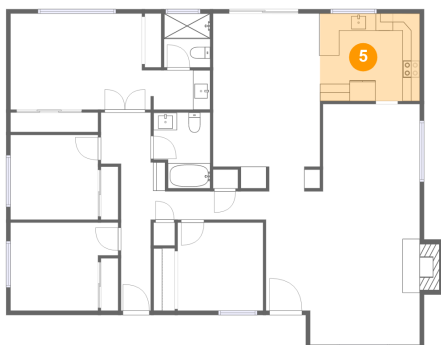
4 Floor 1 - Bedroom



Max Dimensions: 10'2" x 9'10"
Calculated Area: 99 sq. ft
Included: Yes

Heated: Yes
Finished: Yes
Enclosed: Yes
Contiguous: Yes
Permitted: Yes
Wet space: No
Addition: No
Conversion: No

5 Floor 1 - Kitchen

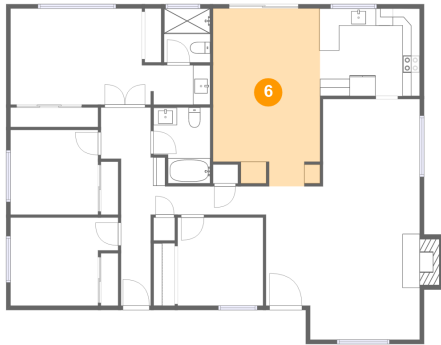


Max Dimensions: 11'7" x 10'1"
Calculated Area: 117 sq. ft
Included: Yes

Heated: Yes
Finished: Yes
Enclosed: Yes
Contiguous: Yes
Permitted: Yes
Wet space: No
Addition: No
Conversion: No

172 Smokey Hills Drive, Cimarron Hills, Vallejo, Solano County,
California, United States, 94589

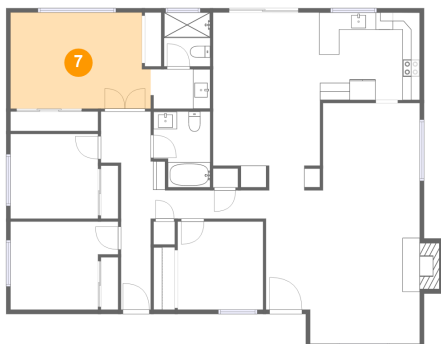
6 Floor 1 - Family Room



Max Dimensions: 12'4" x 20'7"
Calculated Area: 243 sq. ft
Included: Yes

Heated: Yes
Finished: Yes
Enclosed: Yes
Contiguous: Yes
Permitted: Yes
Wet space: No
Addition: No
Conversion: No

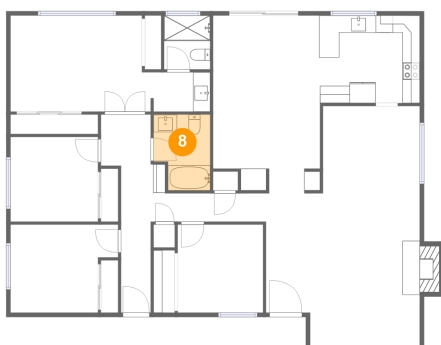
7 Floor 1 - Primary Bedroom



Max Dimensions: 16'3" x 11'1"
Calculated Area: 174 sq. ft
Included: Yes

Heated: Yes
Finished: Yes
Enclosed: Yes
Contiguous: Yes
Permitted: Yes
Wet space: No
Addition: No
Conversion: No

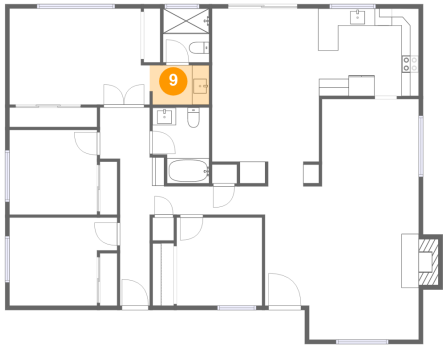
8 Floor 1 - Bath



Max Dimensions: 6'7" x 8'9"
Calculated Area: 52 sq. ft
Included: Yes

Heated: Yes
Finished: Yes
Enclosed: Yes
Contiguous: Yes
Permitted: Yes
Wet space: Yes
Addition: No
Conversion: No

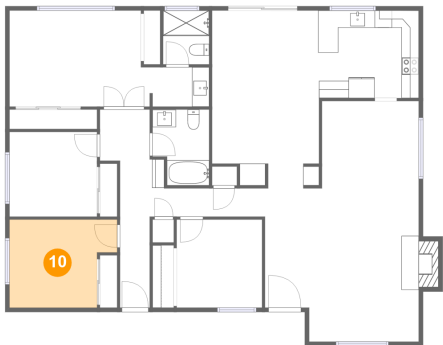
9 Floor 1 - Bath



Max Dimensions: 6'11" x 4'7"
Calculated Area: 31 sq. ft
Included: Yes

Heated: Yes
Finished: Yes
Enclosed: Yes
Contiguous: Yes
Permitted: Yes
Wet space: Yes
Addition: No
Conversion: No

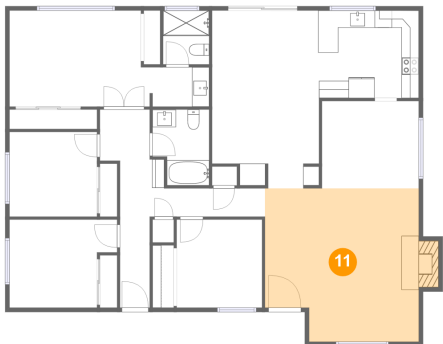
10 Floor 1 - Bedroom



Max Dimensions: 12'6" x 10'2"
Calculated Area: 112 sq. ft
Included: Yes

Heated: Yes
Finished: Yes
Enclosed: Yes
Contiguous: Yes
Permitted: Yes
Wet space: No
Addition: No
Conversion: No

11 Floor 1 - Living Room

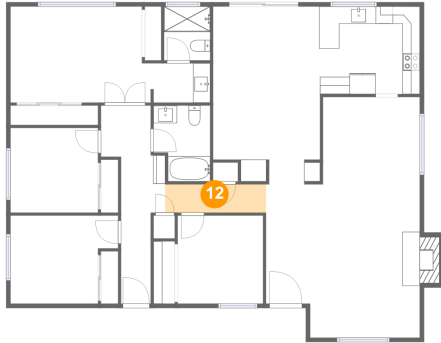


Max Dimensions: 17'9" x 17'9"
Calculated Area: 308 sq. ft
Included: Yes

Heated: Yes
Finished: Yes
Enclosed: Yes
Contiguous: Yes
Permitted: Yes
Wet space: No
Addition: No
Conversion: No

172 Smokey Hills Drive, Cimarron Hills, Vallejo, Solano County,
California, United States, 94589

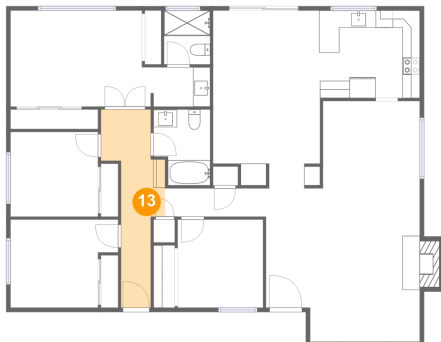
12 Floor 1 - Hall



Max Dimensions: 11'8" x 3'3"
Calculated Area: 38 sq. ft
Included: Yes

Heated: Yes
Finished: Yes
Enclosed: Yes
Contiguous: Yes
Permitted: Yes
Wet space: No
Addition: No
Conversion: No

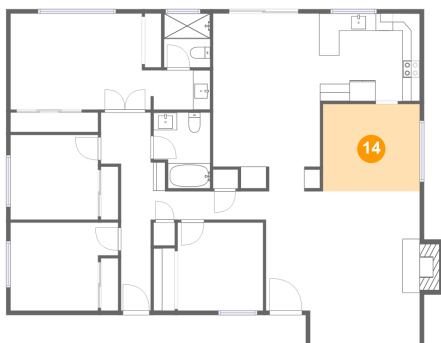
13 Floor 1 - Hall



Max Dimensions: 5'9" x 22'11"
Calculated Area: 104 sq. ft
Included: Yes

Heated: Yes
Finished: Yes
Enclosed: Yes
Contiguous: Yes
Permitted: Yes
Wet space: No
Addition: No
Conversion: No

14 Floor 1 - Dining Area



Max Dimensions: 11'3" x 10'1"
Calculated Area: 113 sq. ft
Included: Yes

Heated: Yes
Finished: Yes
Enclosed: Yes
Contiguous: Yes
Permitted: Yes
Wet space: No
Addition: No
Conversion: No