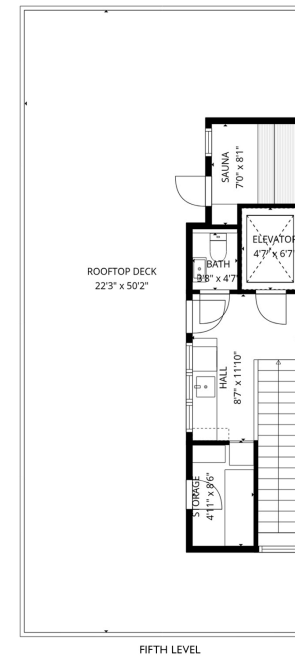
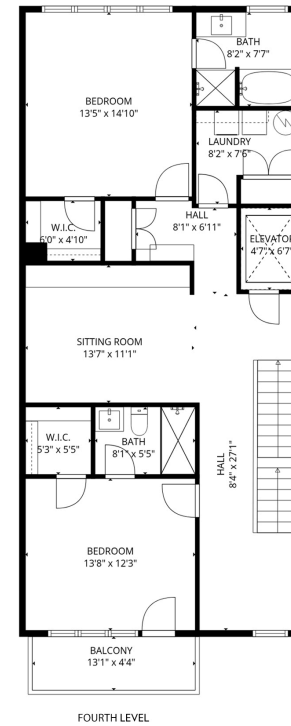
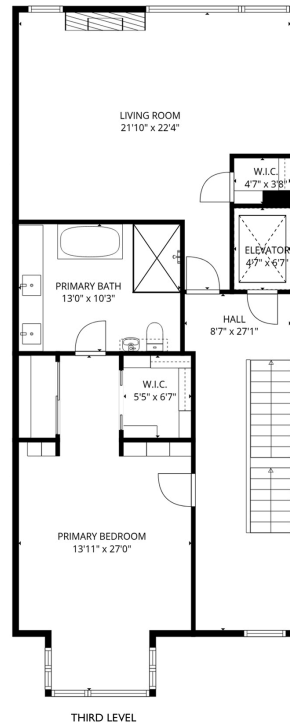
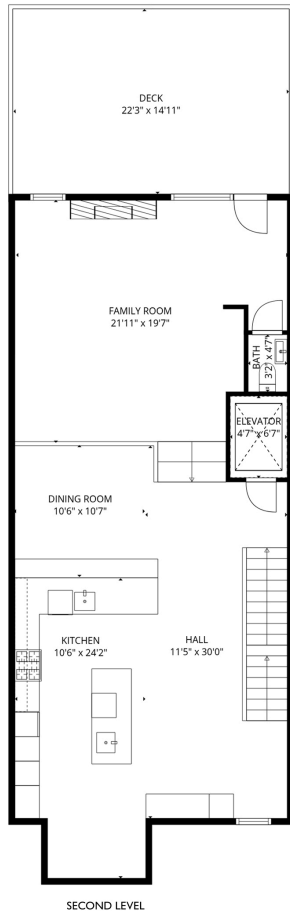
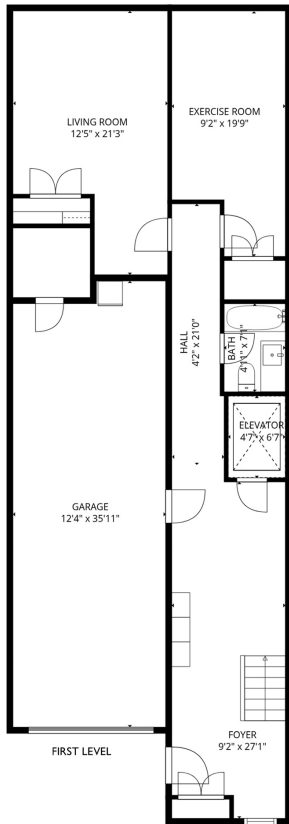


136 N. 22nd Street

Philadelphia, PA 19103



TOTAL: 4317 sq ft
 FIRST LEVEL: 845 sq ft, SECOND LEVEL: 1101 sq ft
 THIRD LEVEL: 1101 sq ft, FOURTH LEVEL: 1063 sq ft, FIFTH LEVEL: 207 sq ft
 EXCLUDED AREAS: ELEVATOR: 150 sq ft, GARAGE: 430 sq ft, DECK: 332 sq ft, BALCONY: 57 sq ft, STORAGE: 41 sq ft, ROOFTOP DECK: 806 sq ft

SIZES AND DIMENSIONS ARE APPROXIMATE, ACTUAL MAY VARY.