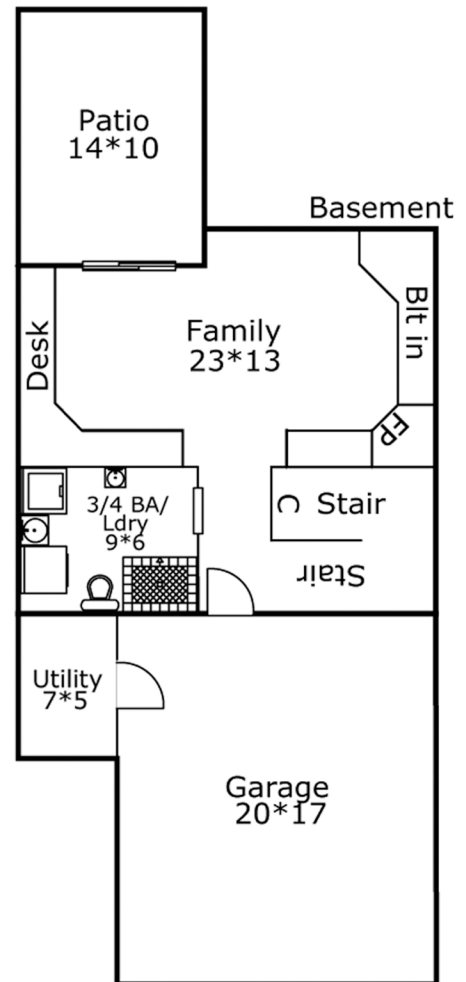
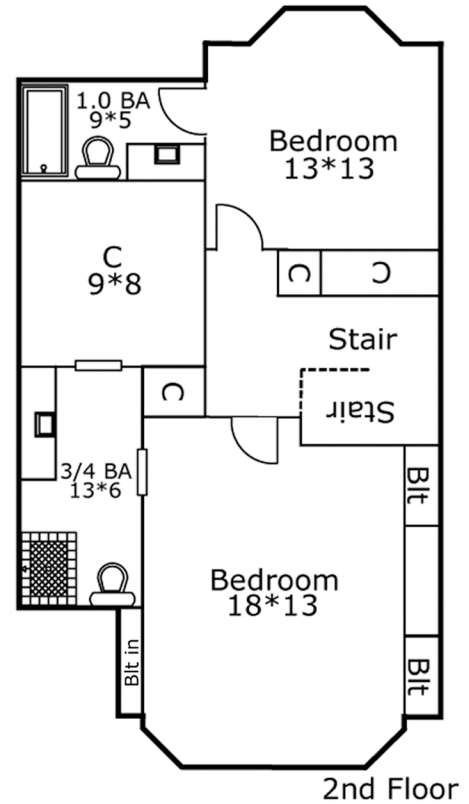
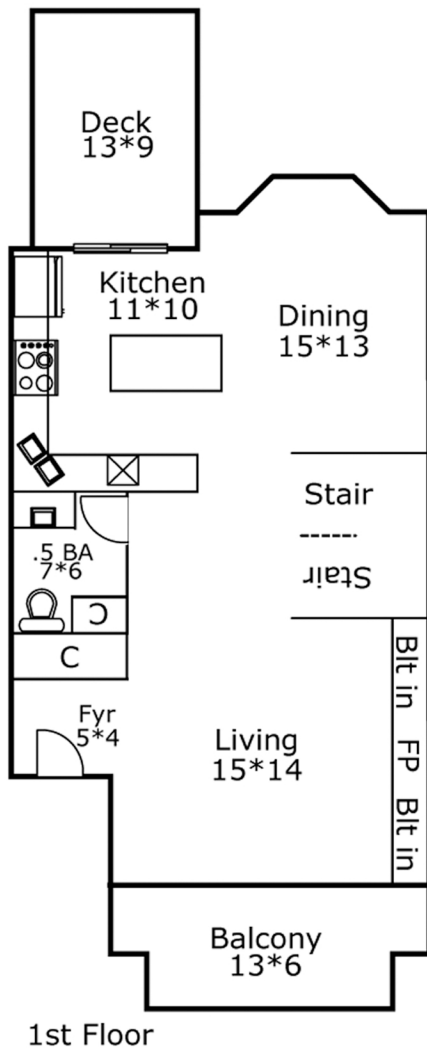


1641 Cedar Lake Parkway

DISCLAIMER: The information contained within this document is an opinion of the square footage of this property. All the information within this document is deemed reliable, but is NOT guaranteed and should be independently verified by the buyers and/or the sellers before making or accepting any offers.



First Floor (Foundation 799 Sq ft)	799 Sq ft
Second Floor	842 Sq ft
Total Above Grade Finished Sq Ft	1641 Sq ft
Total Building Finished Sq Ft	2100 Sq ft
Basement	459 Sq ft
Basement Finished Sq Ft	459 Sq ft
Total Building Sq Ft	2100 Sq ft
Deck	117 Sq ft
Patio	142 Sq ft
Balcony	106 Sq ft
Garage	395 Sq ft