

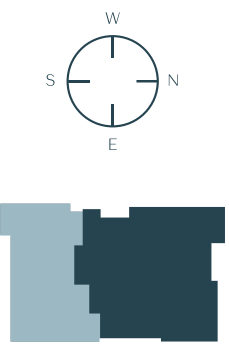
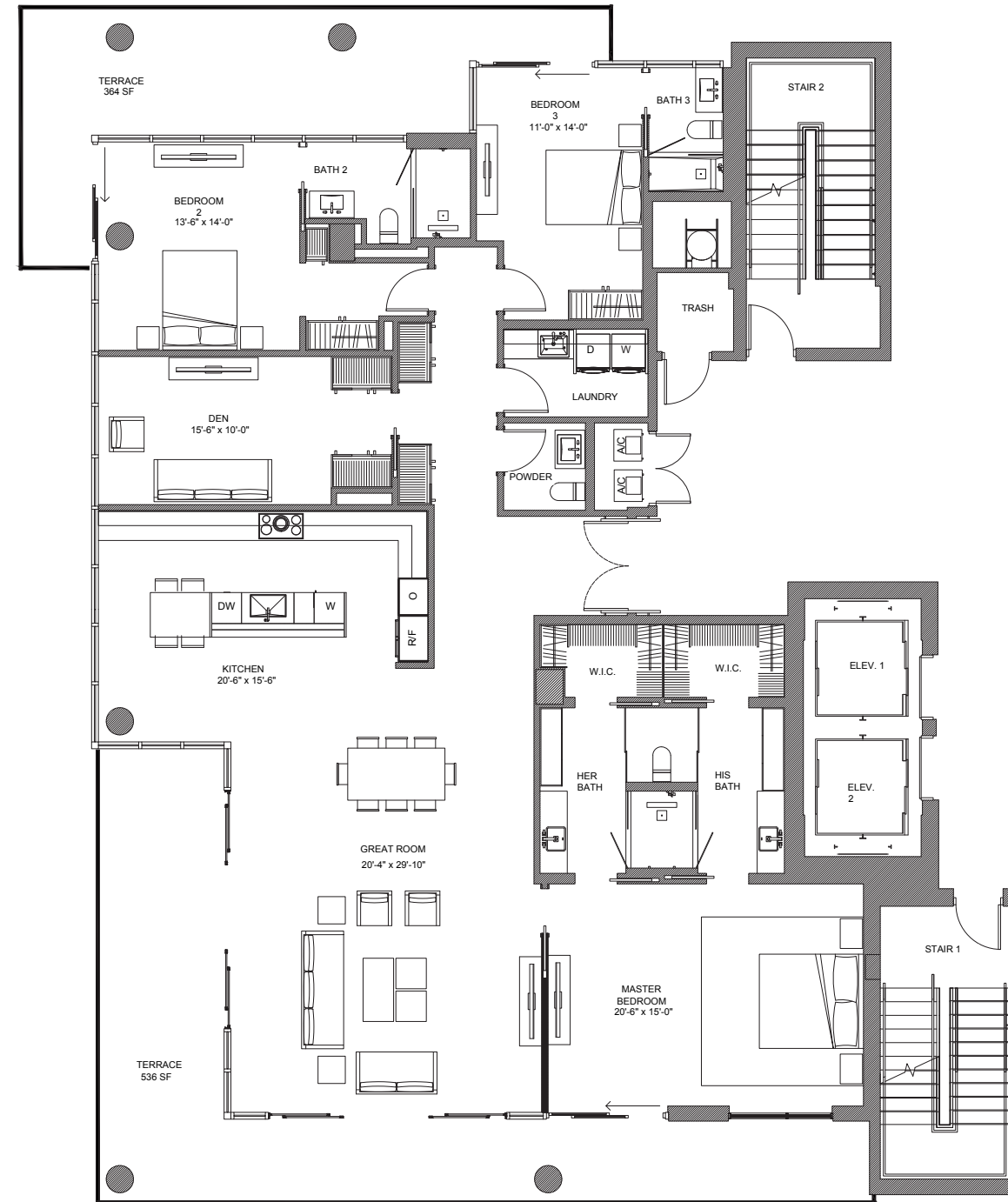
# RESIDENCE 401 A

3 BEDROOMS + DEN | 3 1/2 BATHROOMS

INTERIOR A/C	TERRACE	TOTAL
2642 SF	900 SF	3542 SF

## The RESIDENCE FEATURES

- Open indoor/outdoor floor plans
- Spacious terraces with expansive views
- 10' foot ceilings
- Floor-to-ceiling impact glass windows and doors
- Modern European kitchen cabinetry
- Appliance package by Subzero and Bosch
- Large-format European porcelain tile floors
- Solid wood doors with concealed hinges
- LED lighting throughout with dimmers
- Fixtures by Delta
- Smart thermostat
- Whole House Five Stage Hepa air cleaner with ultraviolet light and photocatalytic filter



## The TERRACES

527 ORTON AVENUE, FORT LAUDERDALE BEACH, FL 33304

954.604.6188

INFO@THETERRACESFTL.COM

THETERRACESFTL.COM



ORAL REPRESENTATIONS CANNOT BE RELIED UPON AS CORRECTLY STATING THE REPRESENTATIONS OF THE DEVELOPER. FOR CORRECT REPRESENTATIONS, REFERENCE SHOULD BE MADE TO THE DOCUMENTS REQUIRED BY SECTION 718.503 FLORIDA STATUTES, TO BE FURNISHED BY THE DEVELOPER TO THE BUYER OR LESSEE. NOT AN OFFER WHERE PROHIBITED BY LAW. PHOTO IS ARTIST'S RENDERING, SUBJECT TO CHANGE.



DEVELOPED BY  
LATITUDE GROUP

Plans, features and amenities subject to change without notice. All illustrations and plans are artist's conceptual renderings and are subject to change without notice. This advertisement does not constitute an offer in the states of NY or NJ or any jurisdiction where prior registration or other qualification is required. While we have made every attempt to ensure that the information contained in the advertising materials has been obtained from reliable sources, The Terraces, a Condominium, operating under the name of Group Latitude, LLC, is not responsible for any errors or omissions, or for the results obtained from the use of this information. All information in the advertising materials is provided "as is," with no guarantee of completeness, accuracy, timeliness or of the results obtained from the use of this information, and without warranty of any kind, express or implied, including, but not limited to warranties of performance, merchantability and fitness for a particular purpose. In no event will The Terraces, a Condominium, operating under the name of Group Latitude, LLC, its related partnerships or corporations, or the partners, agents or employees thereof be liable to you or anyone else for any decision made or action taken in reliance on the information in the advertising materials or for any consequential, special or similar damages, even if advised of the possibility of such damages.

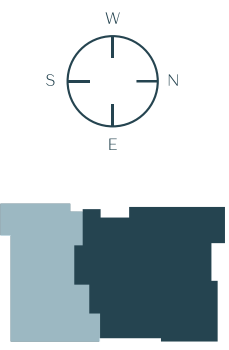
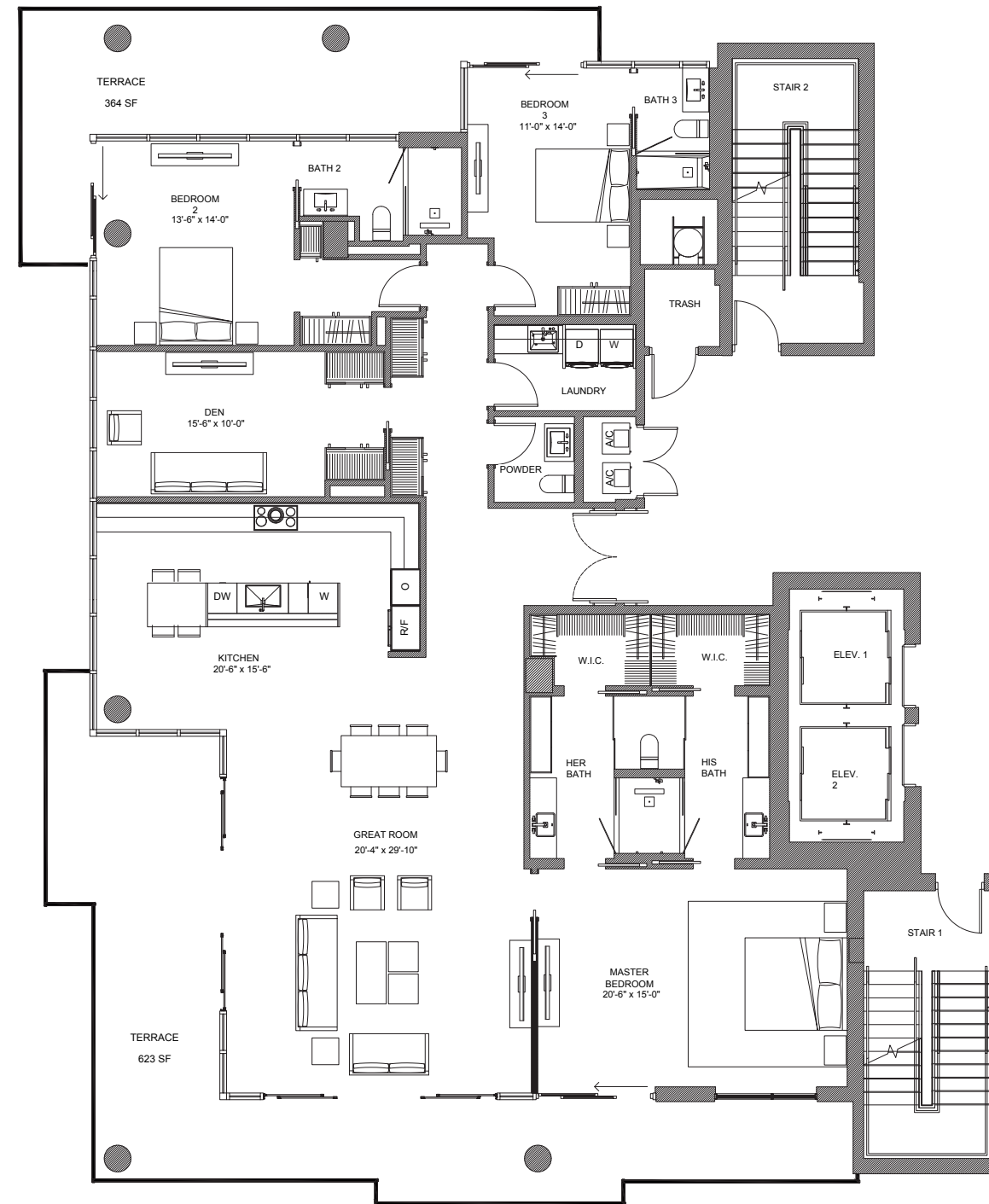
# RESIDENCE 501 A

3 BEDROOMS + DEN | 3 1/2 BATHROOMS

INTERIOR A/C	TERRACE	TOTAL
2642 SF	987 SF	3629 SF

## The RESIDENCE FEATURES

- Open indoor/outdoor floor plans
- Spacious terraces with expansive views
- 10' foot ceilings
- Floor-to-ceiling impact glass windows and doors
- Modern European kitchen cabinetry
- Appliance package by Subzero and Bosch
- Large-format European porcelain tile floors
- Solid wood doors with concealed hinges
- LED lighting throughout with dimmers
- Fixtures by Delta
- Smart thermostat
- Whole House Five Stage Hepa air cleaner with ultraviolet light and photocatalytic filter



## The TERRACES

527 ORTON AVENUE, FORT LAUDERDALE BEACH, FL 33304

954.604.6188

INFO@THETERRACESFTL.COM

THETERRACESFTL.COM



ORAL REPRESENTATIONS CANNOT BE RELIED UPON AS CORRECTLY STATING THE REPRESENTATIONS OF THE DEVELOPER. FOR CORRECT REPRESENTATIONS, REFERENCE SHOULD BE MADE TO THE DOCUMENTS REQUIRED BY SECTION 718.503 FLORIDA STATUTES, TO BE FURNISHED BY THE DEVELOPER TO THE BUYER OR LESSEE. NOT AN OFFER WHERE PROHIBITED BY LAW. PHOTO IS ARTIST'S RENDERING, SUBJECT TO CHANGE.



DEVELOPED BY  
LATITUDE GROUP

Plans, features and amenities subject to change without notice. All illustrations and plans are artist's conceptual renderings and are subject to change without notice. This advertisement does not constitute an offer in the states of NY or NJ or any jurisdiction where prior registration or other qualification is required. While we have made every attempt to ensure that the information contained in the advertising materials has been obtained from reliable sources, The Terraces, a Condominium, operating under the name of Group Latitude, LLC, is not responsible for any errors or omissions, or for the results obtained from the use of this information. All information in the advertising materials is provided "as is," with no guarantee of completeness, accuracy, timeliness or of the results obtained from the use of this information, and without warranty of any kind, express or implied, including, but not limited to warranties of performance, merchantability and fitness for a particular purpose. In no event will The Terraces, a Condominium, operating under the name of Group Latitude, LLC, its related partnerships or corporations, or the partners, agents or employees thereof be liable to you or anyone else for any decision made or action taken in reliance on the information in the advertising materials or for any consequential, special or similar damages, even if advised of the possibility of such damages.

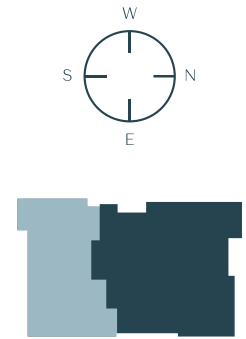
# RESIDENCE 601 A

3 BEDROOMS + DEN | 3 1/2 BATHROOMS

INTERIOR A/C	TERRACE	TOTAL
2642 SF	1072 SF	3714 SF

## The RESIDENCE FEATURES

- Open indoor/outdoor floor plans
- Spacious terraces with expansive views
- 10' foot ceilings
- Floor-to-ceiling impact glass windows and doors
- Modern European kitchen cabinetry
- Appliance package by Subzero and Bosch
- Large-format European porcelain tile floors
- Solid wood doors with concealed hinges
- LED lighting throughout with dimmers
- Fixtures by Delta
- Smart thermostat
- Whole House Five Stage Hepa air cleaner with ultraviolet light and photocatalytic filter



## The TERRACES

527 ORTON AVENUE, FORT LAUDERDALE BEACH, FL 33304

954.604.6188

INFO@THETERRACESFTL.COM

THETERRACESFTL.COM



ORAL REPRESENTATIONS CANNOT BE RELIED UPON AS CORRECTLY STATING THE REPRESENTATIONS OF THE DEVELOPER. FOR CORRECT REPRESENTATIONS, REFERENCE SHOULD BE MADE TO THE DOCUMENTS REQUIRED BY SECTION 718.503 FLORIDA STATUTES, TO BE FURNISHED BY THE DEVELOPER TO THE BUYER OR LESSEE. NOT AN OFFER WHERE PROHIBITED BY LAW. PHOTO IS ARTIST'S RENDERING, SUBJECT TO CHANGE.



DEVELOPED BY  
LATITUDE GROUP

Plans, features and amenities subject to change without notice. All illustrations and plans are artist's conceptual renderings and are subject to change without notice. This advertisement does not constitute an offer in the states of NY or NJ or any jurisdiction where prior registration or other qualification is required. While we have made every attempt to ensure that the information contained in the advertising materials has been obtained from reliable sources, The Terraces, a Condominium, operating under the name of Group Latitude, LLC, is not responsible for any errors or omissions, or for the results obtained from the use of this information. All information in the advertising materials is provided "as is," with no guarantee of completeness, accuracy, timeliness or of the results obtained from the use of this information, and without warranty of any kind, express or implied, including, but not limited to warranties of performance, merchantability and fitness for a particular purpose. In no event will The Terraces, a Condominium, operating under the name of Group Latitude, LLC, its related partnerships or corporations, or the partners, agents or employees thereof be liable to you or anyone else for any decision made or action taken in reliance on the information in the advertising materials or for any consequential, special or similar damages, even if advised of the possibility of such damages.

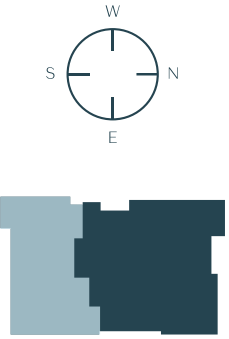
# RESIDENCE 701 A

3 BEDROOMS + DEN | 3 1/2 BATHROOMS

INTERIOR A/C	TERRACE	TOTAL
2646 SF	1094 SF	3740 SF

## The RESIDENCE FEATURES

- Open indoor/outdoor floor plans
- Spacious terraces with expansive views
- 10' foot ceilings
- Floor-to-ceiling impact glass windows and doors
- Modern European kitchen cabinetry
- Appliance package by Subzero and Bosch
- Large-format European porcelain tile floors
- Solid wood doors with concealed hinges
- LED lighting throughout with dimmers
- Fixtures by Delta
- Smart thermostat
- Whole House Five Stage Hepa air cleaner with ultraviolet light and photocatalytic filter



## The TERRACES

527 ORTON AVENUE, FORT LAUDERDALE BEACH, FL 33304

954.604.6188

INFO@THETERRACESFTL.COM

THETERRACESFTL.COM



ORAL REPRESENTATIONS CANNOT BE RELIED UPON AS CORRECTLY STATING THE REPRESENTATIONS OF THE DEVELOPER. FOR CORRECT REPRESENTATIONS, REFERENCE SHOULD BE MADE TO THE DOCUMENTS REQUIRED BY SECTION 718.503 FLORIDA STATUTES, TO BE FURNISHED BY THE DEVELOPER TO THE BUYER OR LESSEE. NOT AN OFFER WHERE PROHIBITED BY LAW. PHOTO IS ARTIST'S RENDERING, SUBJECT TO CHANGE.



DEVELOPED BY  
LATITUDE GROUP

Plans, features and amenities subject to change without notice. All illustrations and plans are artist's conceptual renderings and are subject to change without notice. This advertisement does not constitute an offer in the states of NY or NJ or any jurisdiction where prior registration or other qualification is required. While we have made every attempt to ensure that the information contained in the advertising materials has been obtained from reliable sources, The Terraces, a Condominium, operating under the name of Group Latitude, LLC, is not responsible for any errors or omissions, or for the results obtained from the use of this information. All information in the advertising materials is provided "as is," with no guarantee of completeness, accuracy, timeliness or of the results obtained from the use of this information, and without warranty of any kind, express or implied, including, but not limited to warranties of performance, merchantability and fitness for a particular purpose. In no event will The Terraces, a Condominium, operating under the name of Group Latitude, LLC, its related partnerships or corporations, or the partners, agents or employees thereof be liable to you or anyone else for any decision made or action taken in reliance on the information in the advertising materials or for any consequential, special or similar damages, even if advised of the possibility of such damages.

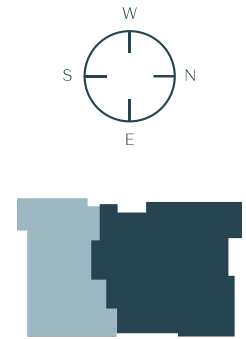
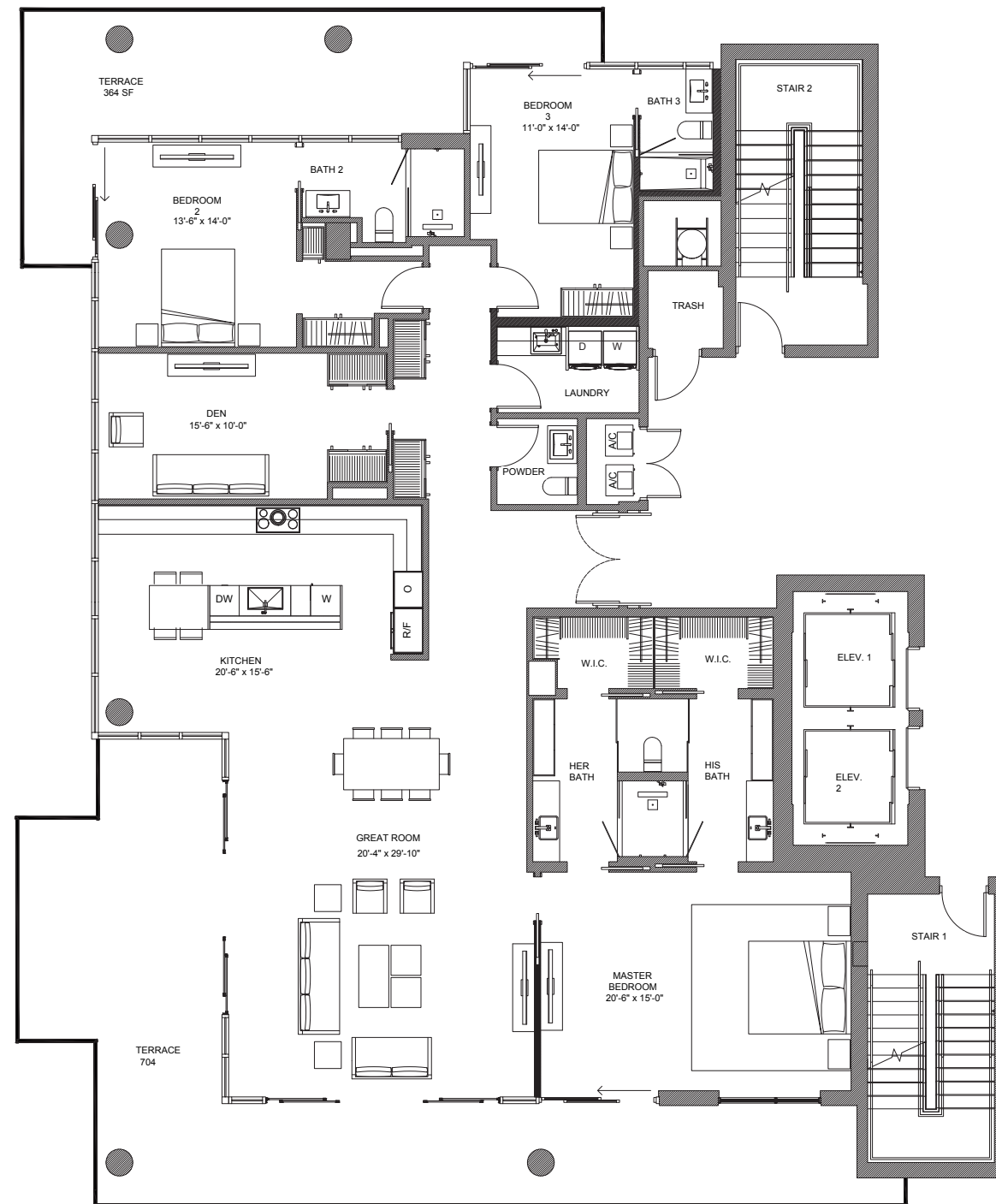
# RESIDENCE 801 A

3 BEDROOMS + DEN | 3 1/2 BATHROOMS

INTERIOR A/C	TERRACE	TOTAL
2647 SF	1068 SF	3715 SF

## The RESIDENCE FEATURES

- Open indoor/outdoor floor plans
- Spacious terraces with expansive views
- 10' foot ceilings
- Floor-to-ceiling impact glass windows and doors
- Modern European kitchen cabinetry
- Appliance package by Subzero and Bosch
- Large-format European porcelain tile floors
- Solid wood doors with concealed hinges
- LED lighting throughout with dimmers
- Fixtures by Delta
- Smart thermostat
- Whole House Five Stage Hepa air cleaner with ultraviolet light and photocatalytic filter



## The TERRACES

527 ORTON AVENUE, FORT LAUDERDALE BEACH, FL 33304

954.604.6188

INFO@THETERRACESFTL.COM

THETERRACESFTL.COM



ORAL REPRESENTATIONS CANNOT BE RELIED UPON AS CORRECTLY STATING THE REPRESENTATIONS OF THE DEVELOPER. FOR CORRECT REPRESENTATIONS, REFERENCE SHOULD BE MADE TO THE DOCUMENTS REQUIRED BY SECTION 718.503 FLORIDA STATUTES, TO BE FURNISHED BY THE DEVELOPER TO THE BUYER OR LESSEE. NOT AN OFFER WHERE PROHIBITED BY LAW. PHOTO IS ARTIST'S RENDERING, SUBJECT TO CHANGE.

Douglas Elliman

DEVELOPED BY  
LATITUDE GROUP

Plans, features and amenities subject to change without notice. All illustrations and plans are artist's conceptual renderings and are subject to change without notice. This advertisement does not constitute an offer in the states of NY or NJ or any jurisdiction where prior registration or other qualification is required. While we have made every attempt to ensure that the information contained in the advertising materials has been obtained from reliable sources, The Terraces, a Condominium, operating under the name of Group Latitude, LLC, is not responsible for any errors or omissions, or for the results obtained from the use of this information. All information in the advertising materials is provided "as is," with no guarantee of completeness, accuracy, timeliness or of the results obtained from the use of this information, and without warranty of any kind, express or implied, including, but not limited to warranties of performance, merchantability and fitness for a particular purpose. In no event will The Terraces, a Condominium, operating under the name of Group Latitude, LLC, its related partnerships or corporations, or the partners, agents or employees thereof be liable to you or anyone else for any decision made or action taken in reliance on the information in the advertising materials or for any consequential, special or similar damages, even if advised of the possibility of such damages.

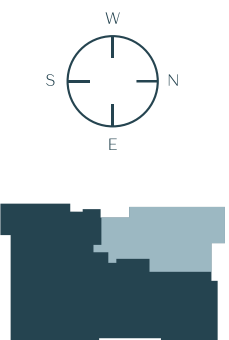
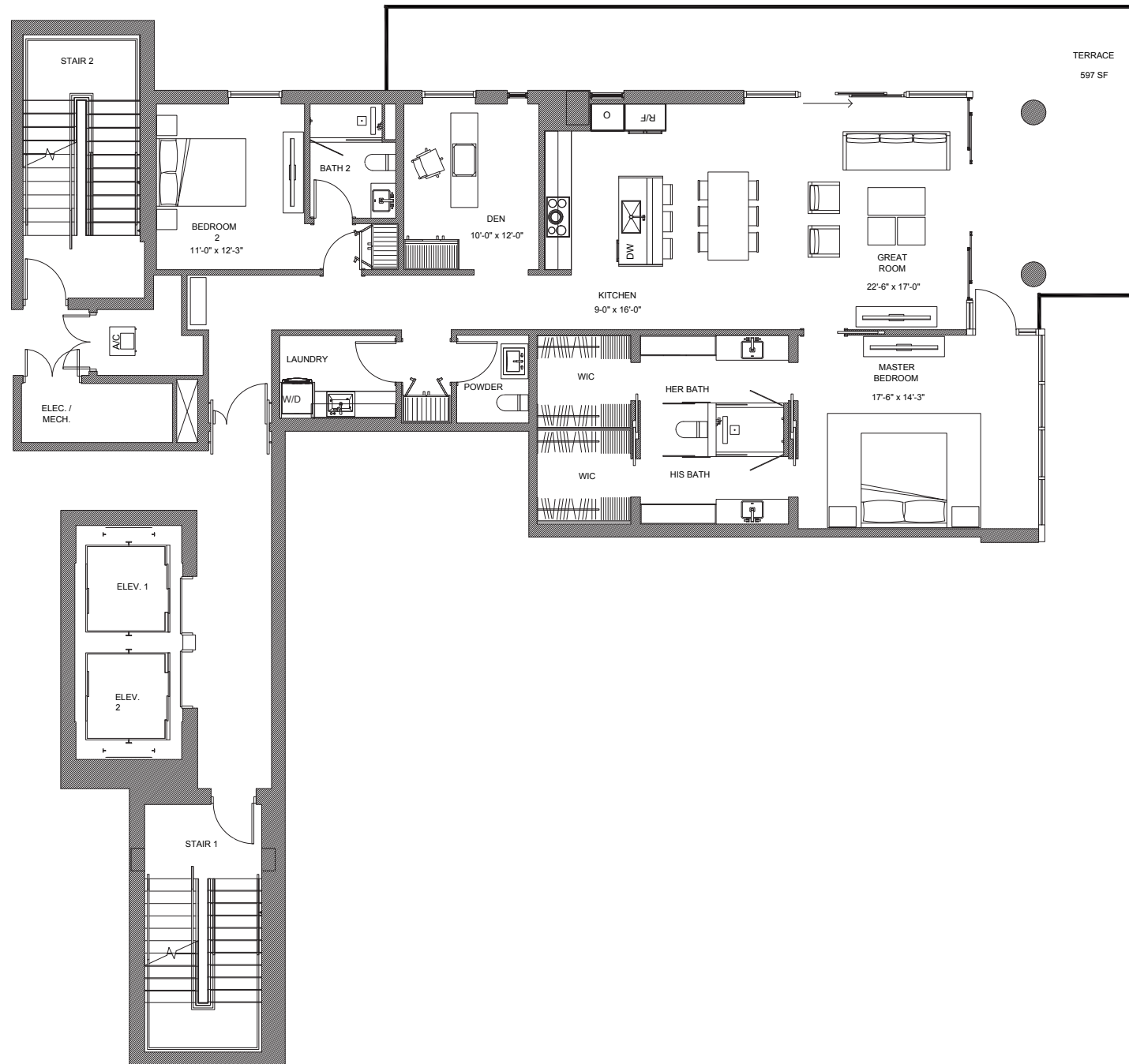
# RESIDENCE 402 B

2 BEDROOMS + DEN | 2 1/2 BATHROOMS

INTERIOR A/C	TERRACE	TOTAL
1727 SF	597 SF	2324 SF

## The RESIDENCE FEATURES

- Open indoor/outdoor floor plans
- Spacious terraces with expansive views
- 10' foot ceilings
- Floor-to-ceiling impact glass windows and doors
- Modern European kitchen cabinetry
- Appliance package by Subzero and Bosch
- Large-format European porcelain tile floors
- Solid wood doors with concealed hinges
- LED lighting throughout with dimmers
- Fixtures by Delta
- Smart thermostat
- Whole House Five Stage Hepa air cleaner with ultraviolet light and photocatalytic filter



## The TERRACES

527 ORTON AVENUE, FORT LAUDERDALE BEACH, FL 33304

954.604.6188

INFO@THETERRACESFTL.COM

THETERRACESFTL.COM



ORAL REPRESENTATIONS CANNOT BE RELIED UPON AS CORRECTLY STATING THE REPRESENTATIONS OF THE DEVELOPER. FOR CORRECT REPRESENTATIONS, REFERENCE SHOULD BE MADE TO THE DOCUMENTS REQUIRED BY SECTION 718.503 FLORIDA STATUTES, TO BE FURNISHED BY THE DEVELOPER TO THE BUYER OR LESSEE. NOT AN OFFER WHERE PROHIBITED BY LAW. PHOTO IS ARTIST'S RENDERING, SUBJECT TO CHANGE.



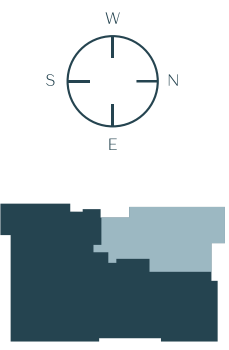
DEVELOPED BY  
LATITUDE GROUP

Plans, features and amenities subject to change without notice. All illustrations and plans are artist's conceptual renderings and are subject to change without notice. This advertisement does not constitute an offer in the states of NY or NJ or any jurisdiction where prior registration or other qualification is required. While we have made every attempt to ensure that the information contained in the advertising materials has been obtained from reliable sources, The Terraces, a Condominium, operating under the name of Group Latitude, LLC, is not responsible for any errors or omissions, or for the results obtained from the use of this information. All information in the advertising materials is provided "as is," with no guarantee of completeness, accuracy, timeliness or of the results obtained from the use of this information, and without warranty of any kind, express or implied, including, but not limited to warranties of performance, merchantability and fitness for a particular purpose. In no event will The Terraces, a Condominium, operating under the name of Group Latitude, LLC, its related partnerships or corporations, or the partners, agents or employees thereof be liable to you or anyone else for any decision made or action taken in reliance on the information in the advertising materials or for any consequential, special or similar damages, even if advised of the possibility of such damages.

# RESIDENCE 502 B

2 BEDROOMS + DEN | 2 1/2 BATHROOMS

INTERIOR A/C	TERRACE	TOTAL
1727 SF	338 SF	2065 SF



## The RESIDENCE FEATURES

- Open indoor/outdoor floor plans
- Spacious terraces with expansive views
- 10' foot ceilings
- Floor-to-ceiling impact glass windows and doors
- Modern European kitchen cabinetry
- Appliance package by Subzero and Bosch
- Large-format European porcelain tile floors
- Solid wood doors with concealed hinges
- LED lighting throughout with dimmers
- Fixtures by Delta
- Smart thermostat
- Whole House Five Stage Hepa air cleaner with ultraviolet light and photocatalytic filter

## The TERRACES

527 ORTON AVENUE, FORT LAUDERDALE BEACH, FL 33304

954.604.6188

INFO@THETERRACESFTL.COM

THETERRACESFTL.COM



ORAL REPRESENTATIONS CANNOT BE RELIED UPON AS CORRECTLY STATING THE REPRESENTATIONS OF THE DEVELOPER. FOR CORRECT REPRESENTATIONS, REFERENCE SHOULD BE MADE TO THE DOCUMENTS REQUIRED BY SECTION 718.503 FLORIDA STATUTES, TO BE FURNISHED BY THE DEVELOPER TO THE BUYER OR LESSEE. NOT AN OFFER WHERE PROHIBITED BY LAW. PHOTO IS ARTIST'S RENDERING, SUBJECT TO CHANGE.



DEVELOPED BY  
LATITUDE GROUP

Plans, features and amenities subject to change without notice. All illustrations and plans are artist's conceptual renderings and are subject to change without notice. This advertisement does not constitute an offer in the states of NY or NJ or any jurisdiction where prior registration or other qualification is required. While we have made every attempt to ensure that the information contained in the advertising materials has been obtained from reliable sources, The Terraces, a Condominium, operating under the name of Group Latitude, LLC, is not responsible for any errors or omissions, or for the results obtained from the use of this information. All information in the advertising materials is provided "as is," with no guarantee of completeness, accuracy, timeliness or of the results obtained from the use of this information, and without warranty of any kind, express or implied, including, but not limited to warranties of performance, merchantability and fitness for a particular purpose. In no event will The Terraces, a Condominium, operating under the name of Group Latitude, LLC, its related partnerships or corporations, or the partners, agents or employees thereof be liable to you or anyone else for any decision made or action taken in reliance on the information in the advertising materials or for any consequential, special or similar damages, even if advised of the possibility of such damages.

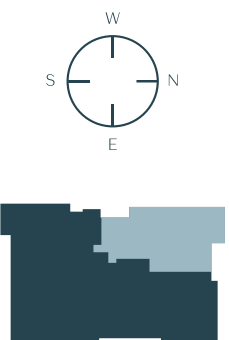
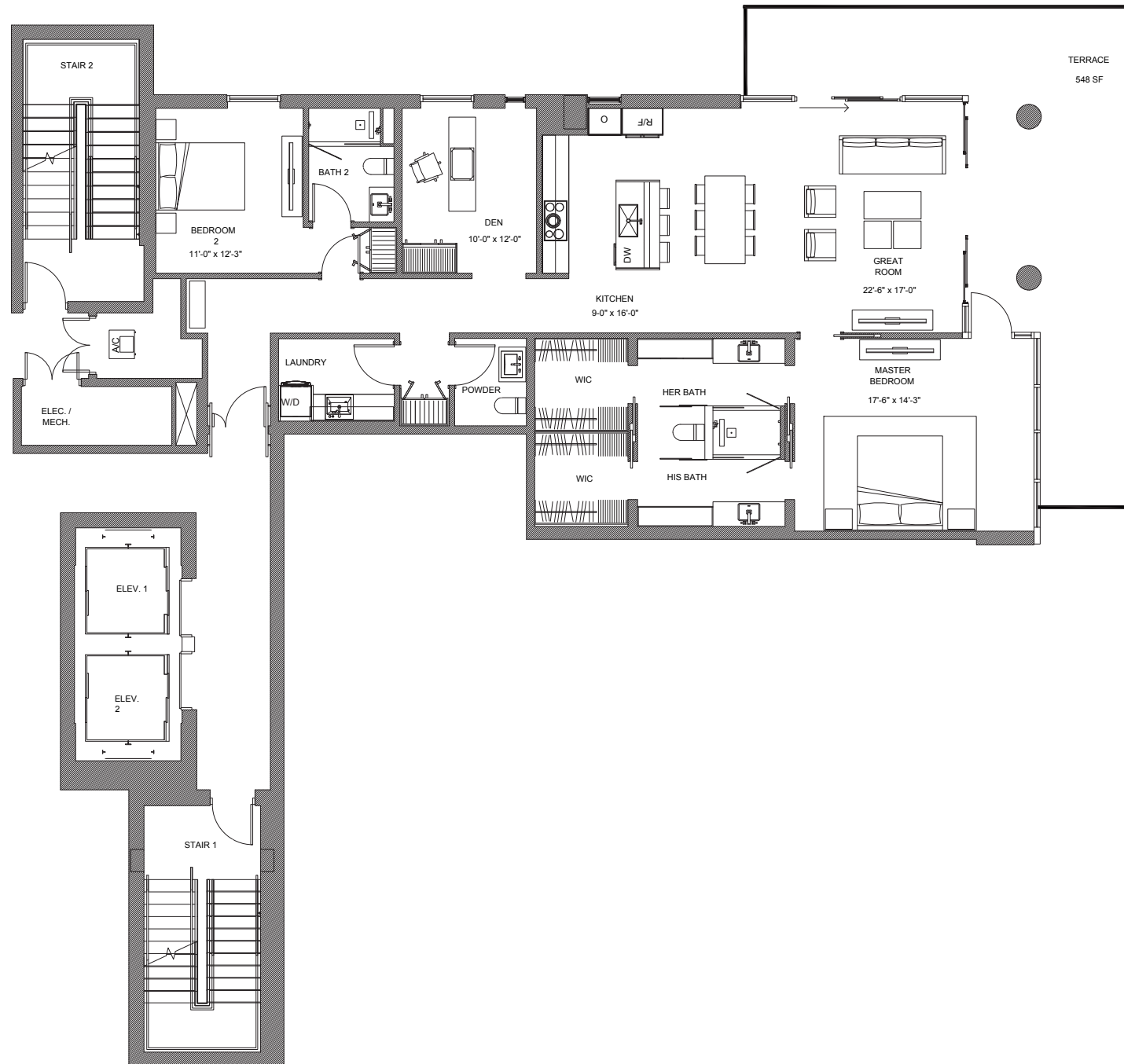
# RESIDENCE 602 B

2 BEDROOMS + DEN | 2 1/2 BATHROOMS

INTERIOR A/C	TERRACE	TOTAL
1731 SF	548 SF	2279 SF

## The RESIDENCE FEATURES

- Open indoor/outdoor floor plans
- Spacious terraces with expansive views
- 10' foot ceilings
- Floor-to-ceiling impact glass windows and doors
- Modern European kitchen cabinetry
- Appliance package by Subzero and Bosch
- Large-format European porcelain tile floors
- Solid wood doors with concealed hinges
- LED lighting throughout with dimmers
- Fixtures by Delta
- Smart thermostat
- Whole House Five Stage Hepa air cleaner with ultraviolet light and photocatalytic filter



## The TERRACES

527 ORTON AVENUE, FORT LAUDERDALE BEACH, FL 33304

954.604.6188

INFO@THETERRACESFTL.COM

THETERRACESFTL.COM



ORAL REPRESENTATIONS CANNOT BE RELIED UPON AS CORRECTLY STATING THE REPRESENTATIONS OF THE DEVELOPER. FOR CORRECT REPRESENTATIONS, REFERENCE SHOULD BE MADE TO THE DOCUMENTS REQUIRED BY SECTION 718.503 FLORIDA STATUTES, TO BE FURNISHED BY THE DEVELOPER TO THE BUYER OR LESSEE. NOT AN OFFER WHERE PROHIBITED BY LAW. PHOTO IS ARTIST'S RENDERING, SUBJECT TO CHANGE.



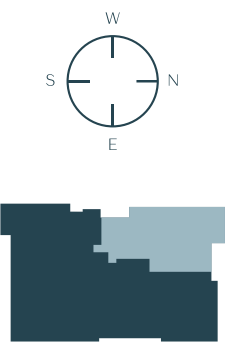
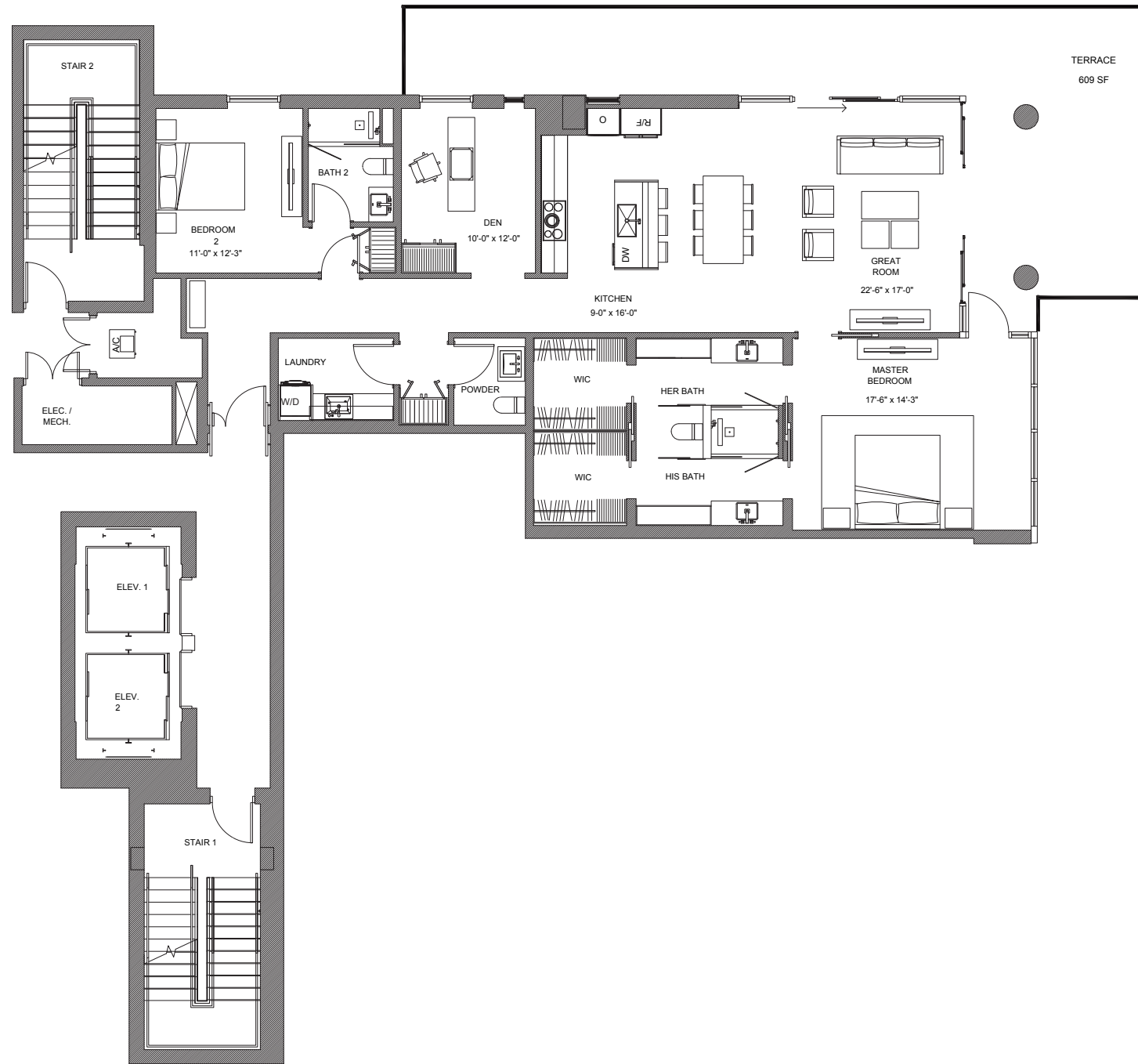
DEVELOPED BY  
LATITUDE GROUP

Plans, features and amenities subject to change without notice. All illustrations and plans are artist's conceptual renderings and are subject to change without notice. This advertisement does not constitute an offer in the states of NY or NJ or any jurisdiction where prior registration or other qualification is required. While we have made every attempt to ensure that the information contained in the advertising materials has been obtained from reliable sources, The Terraces, a Condominium, operating under the name of Group Latitude, LLC, is not responsible for any errors or omissions, or for the results obtained from the use of this information. All information in the advertising materials is provided "as is," with no guarantee of completeness, accuracy, timeliness or of the results obtained from the use of this information, and without warranty of any kind, express or implied, including, but not limited to warranties of performance, merchantability and fitness for a particular purpose. In no event will The Terraces, a Condominium, operating under the name of Group Latitude, LLC, its related partnerships or corporations, or the partners, agents or employees thereof be liable to you or anyone else for any decision made or action taken in reliance on the information in the advertising materials or for any consequential, special or similar damages, even if advised of the possibility of such damages.

# RESIDENCE 702 B

2 BEDROOMS + DEN | 2 1/2 BATHROOMS

INTERIOR A/C	TERRACE	TOTAL
1730 SF	609 SF	2339 SF



## The RESIDENCE FEATURES

- Open indoor/outdoor floor plans
- Spacious terraces with expansive views
- 10' foot ceilings
- Floor-to-ceiling impact glass windows and doors
- Modern European kitchen cabinetry
- Appliance package by Subzero and Bosch
- Large-format European porcelain tile floors
- Solid wood doors with concealed hinges
- LED lighting throughout with dimmers
- Fixtures by Delta
- Smart thermostat
- Whole House Five Stage Hepa air cleaner with ultraviolet light and photocatalytic filter

## The TERRACES

527 ORTON AVENUE, FORT LA JDERDALE BEACH, FL 33304

954.604.6188

INFO@THETERRACESFTL.COM

THETERRACESFTL.COM



ORAL REPRESENTATIONS CANNOT BE RELIED UPON AS CORRECTLY STATING THE REPRESENTATIONS OF THE DEVELOPER. FOR CORRECT REPRESENTATIONS, REFERENCE SHOULD BE MADE TO THE DOCUMENTS REQUIRED BY SECTION 718.503 FLORIDA STATUTES, TO BE FURNISHED BY THE DEVELOPER TO THE BUYER OR LESSEE. NOT AN OFFER WHERE PROHIBITED BY LAW. PHOTO IS ARTIST'S RENDERING, SUBJECT TO CHANGE.



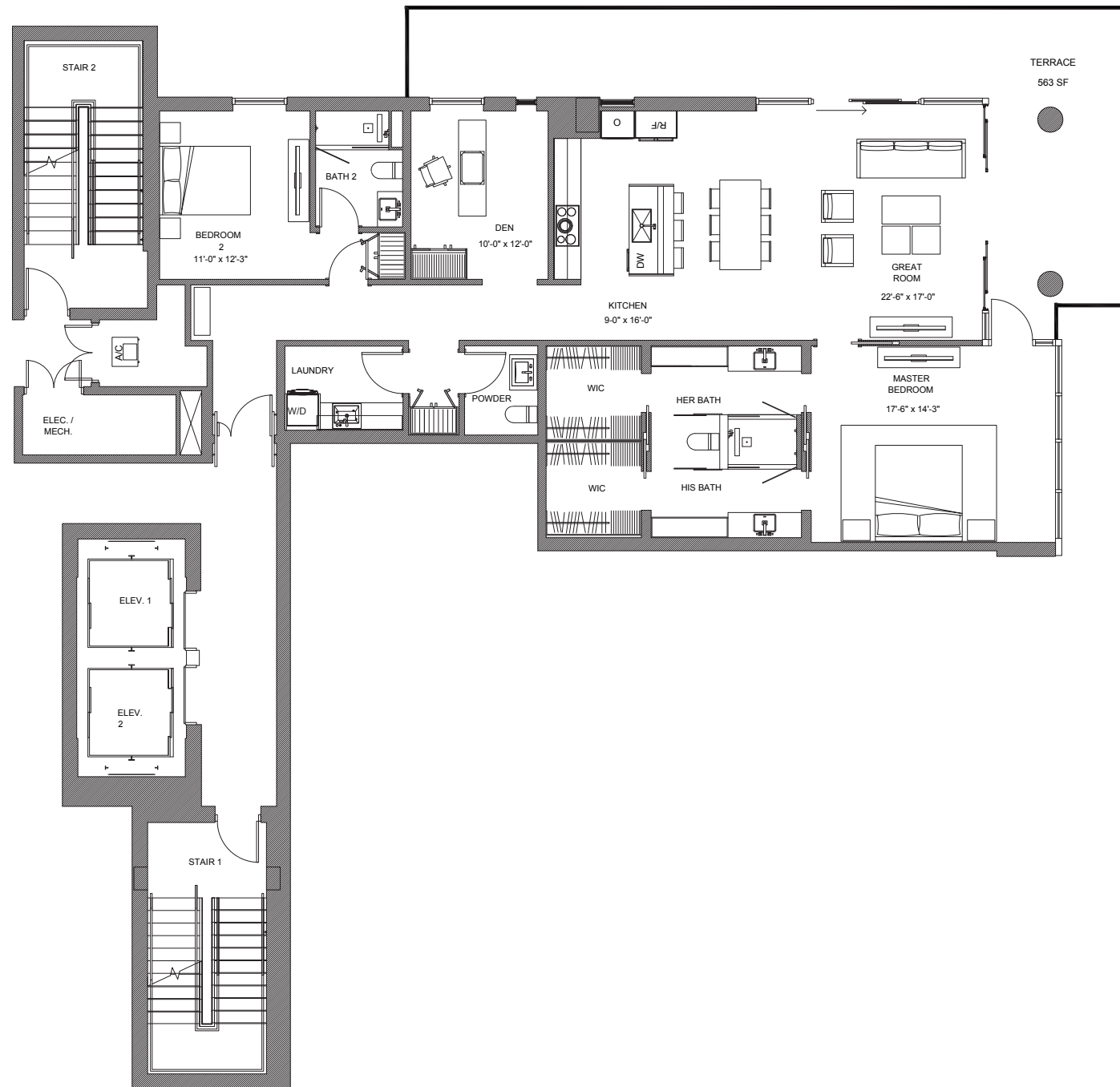
DEVELOPED BY  
LATITUDE GROUP

Plans, features and amenities subject to change without notice. All illustrations and plans are artist's conceptual renderings and are subject to change without notice. This advertisement does not constitute an offer in the states of NY or NJ or any jurisdiction where prior registration or other qualification is required. While we have made every attempt to ensure that the information contained in the advertising materials has been obtained from reliable sources, The Terraces, a Condominium, operating under the name of Group Latitude, LLC, is not responsible for any errors or omissions, or for the results obtained from the use of this information, and without warranty of any kind, express or implied, including, but not limited to warranties of performance, merchantability and fitness for a particular purpose. In no event will The Terraces, a Condominium, operating under the name of Group Latitude, LLC, its related partnerships or corporations, or the partners, agents or employees thereof be liable to you or anyone else for any decision made or action taken in reliance on the information in the advertising materials or for any consequential, special or similar damages, even if advised of the possibility of such damages.

# RESIDENCE 802 B

2 BEDROOMS + DEN | 2 1/2 BATHROOMS

INTERIOR A/C	TERRACE	TOTAL
1731 SF	563 SF	2294 SF



## The RESIDENCE FEATURES

- Open indoor/outdoor floor plans
- Spacious terraces with expansive views
- 10' foot ceilings
- Floor-to-ceiling impact glass windows and doors
- Modern European kitchen cabinetry
- Appliance package by Subzero and Bosch
- Large-format European porcelain tile floors
- Solid wood doors with concealed hinges
- LED lighting throughout with dimmers
- Fixtures by Delta
- Smart thermostat
- Whole House Five Stage Hepa air cleaner with ultraviolet light and photocatalytic filter

## The TERRACES

527 ORTON AVENUE, FORT LAUDERDALE BEACH, FL 33304

954.604.6188

INFO@THETERRACESFTL.COM

THETERRACESFTL.COM



ORAL REPRESENTATIONS CANNOT BE RELIED UPON AS CORRECTLY STATING THE REPRESENTATIONS OF THE DEVELOPER. FOR CORRECT REPRESENTATIONS, REFERENCE SHOULD BE MADE TO THE DOCUMENTS REQUIRED BY SECTION 718.503 FLORIDA STATUTES, TO BE FURNISHED BY THE DEVELOPER TO THE BUYER OR LESSEE. NOT AN OFFER WHERE PROHIBITED BY LAW. PHOTO IS ARTIST'S RENDERING, SUBJECT TO CHANGE.



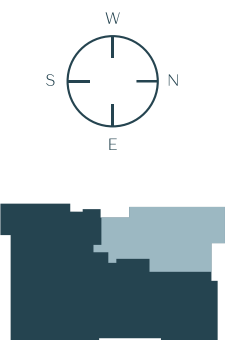
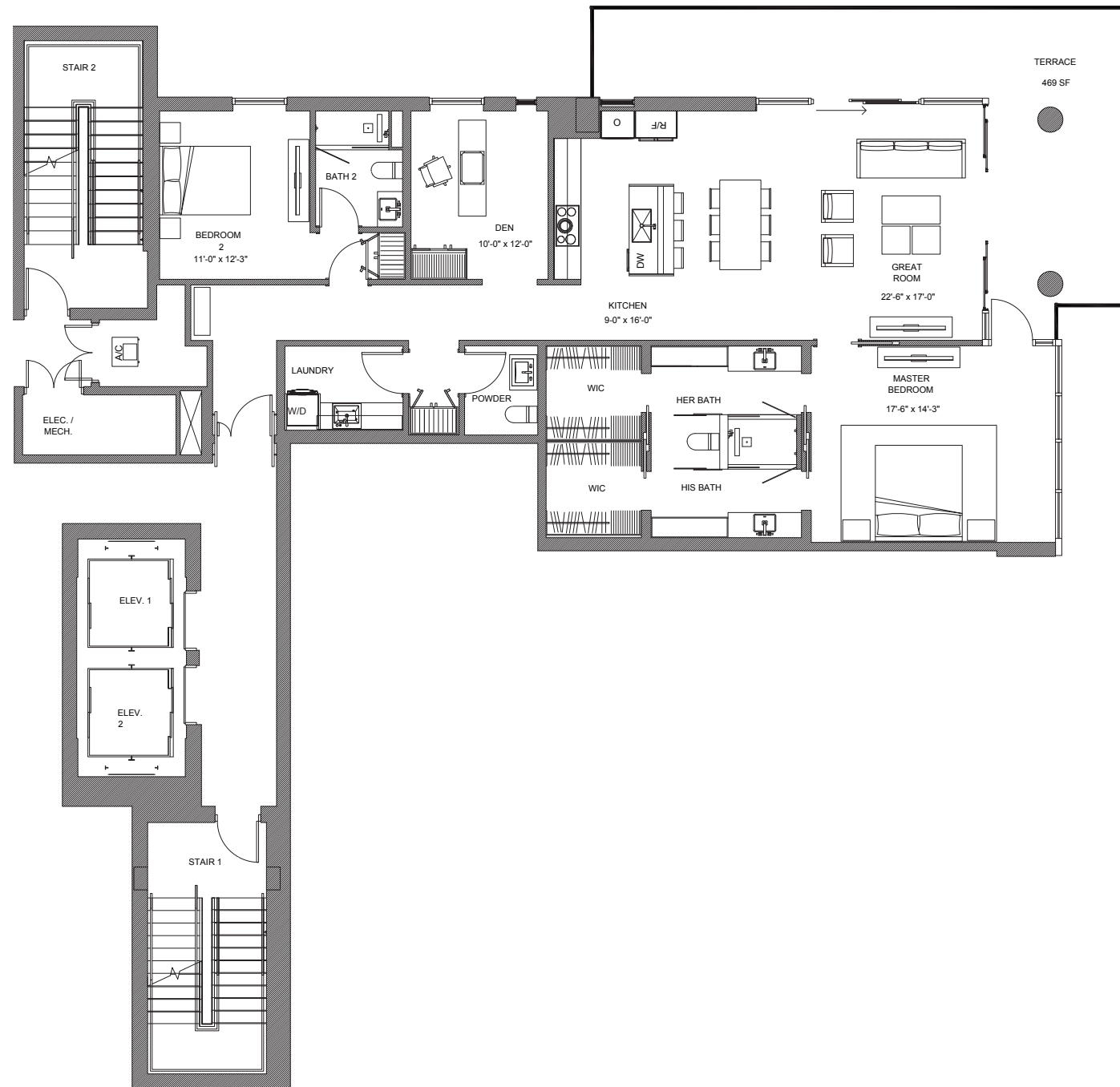
DEVELOPED BY  
LATITUDE GROUP

Plans, features and amenities subject to change without notice. All illustrations and plans are artist's conceptual renderings and are subject to change without notice. This advertisement does not constitute an offer in the states of NY or NJ or any jurisdiction where prior registration or other qualification is required. While we have made every attempt to ensure that the information contained in the advertising materials has been obtained from reliable sources, The Terraces, a Condominium, operating under the name of Group Latitude, LLC, is not responsible for any errors or omissions, or for the results obtained from the use of this information. All information in the advertising materials is provided "as is," with no guarantee of completeness, accuracy, timeliness or of the results obtained from the use of this information, and without warranty of any kind, express or implied, including, but not limited to warranties of performance, merchantability and fitness for a particular purpose. In no event will The Terraces, a Condominium, operating under the name of Group Latitude, LLC, its related partnerships or corporations, or the partners, agents or employees thereof be liable to you or anyone else for any decision made or action taken in reliance on the information in the advertising materials or for any consequential, special or similar damages, even if advised of the possibility of such damages.

# RESIDENCE 902 B

2 BEDROOMS + DEN | 2 1/2 BATHROOMS

INTERIOR A/C	TERRACE	TOTAL
1776 SF	548 SF	2324 SF



## The RESIDENCE FEATURES

- Open indoor/outdoor floor plans
- Spacious terraces with expansive views
- 10' foot ceilings
- Floor-to-ceiling impact glass windows and doors
- Modern European kitchen cabinetry
- Appliance package by Subzero and Bosch
- Large-format European porcelain tile floors
- Solid wood doors with concealed hinges
- LED lighting throughout with dimmers
- Fixtures by Delta
- Smart thermostat
- Whole House Five Stage Hepa air cleaner with ultraviolet light and photocatalytic filter

## The TERRACES

527 ORTON AVENUE, FORT LAUDERDALE BEACH, FL 33304

954.604.6188

INFO@THETERRACESFTL.COM

THETERRACESFTL.COM



ORAL REPRESENTATIONS CANNOT BE RELIED UPON AS CORRECTLY STATING THE REPRESENTATIONS OF THE DEVELOPER. FOR CORRECT REPRESENTATIONS, REFERENCE SHOULD BE MADE TO THE DOCUMENTS REQUIRED BY SECTION 718.503 FLORIDA STATUTES, TO BE FURNISHED BY THE DEVELOPER TO THE BUYER OR LESSEE. NOT AN OFFER WHERE PROHIBITED BY LAW. PHOTO IS ARTIST'S RENDERING, SUBJECT TO CHANGE.



DEVELOPED BY  
LATITUDE GROUP

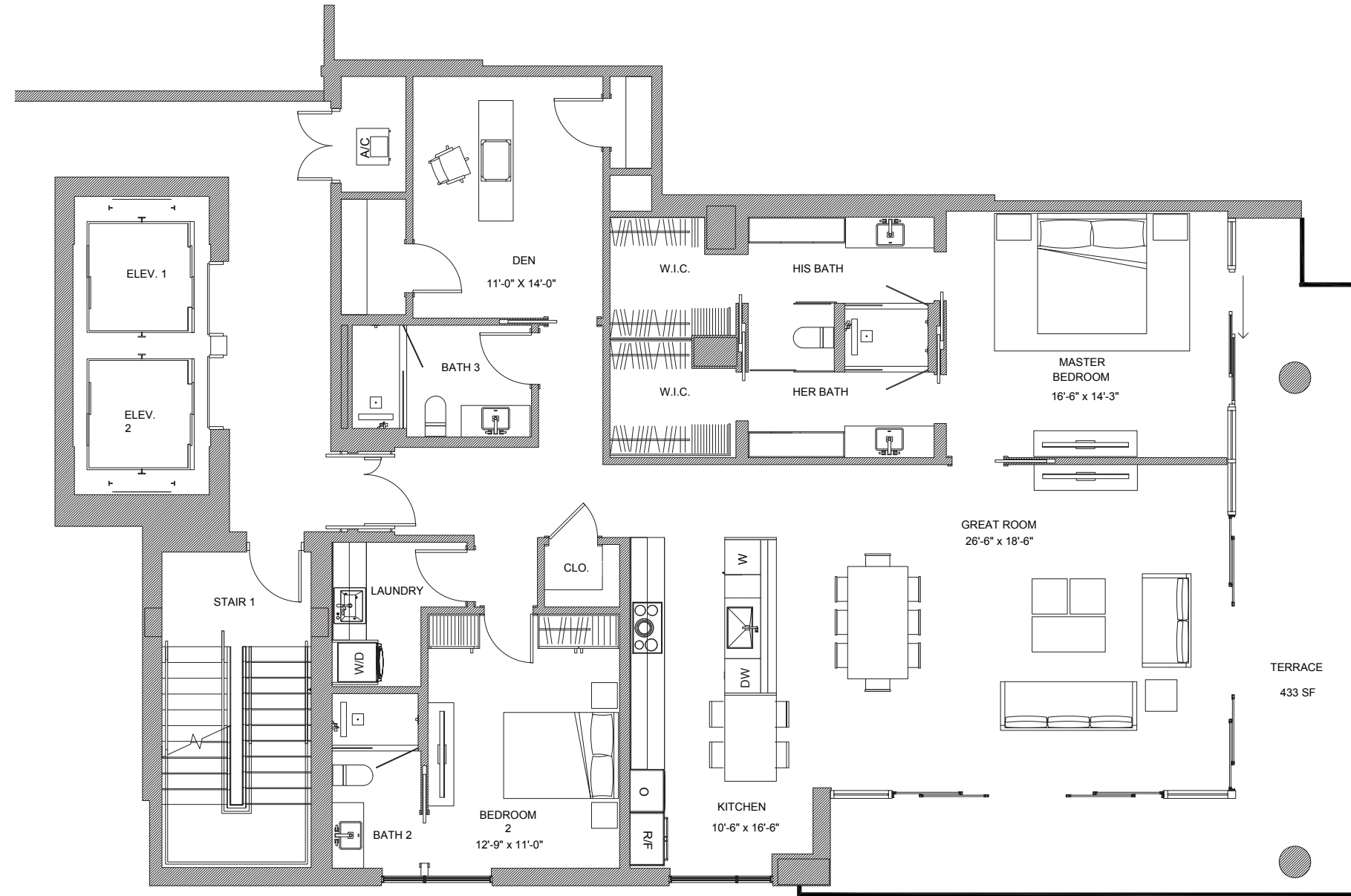
Plans, features and amenities subject to change without notice. All illustrations and plans are artist's conceptual renderings and are subject to change without notice. This advertisement does not constitute an offer in the states of NY or NJ or any jurisdiction where prior registration or other qualification is required. While we have made every attempt to ensure that the information contained in the advertising materials has been obtained from reliable sources, The Terraces, a Condominium, operating under the name of Group Latitude, LLC, is not responsible for any errors or omissions, or for the results obtained from the use of this information. All information in the advertising materials is provided "as is," with no guarantee of completeness, accuracy, timeliness or of the results obtained from the use of this information, and without warranty of any kind, express or implied, including, but not limited to warranties of performance, merchantability and fitness for a particular purpose. In no event will The Terraces, a Condominium, operating under the name of Group Latitude, LLC, its related partnerships or corporations, or the partners, agents or employees thereof be liable to you or anyone else for any decision made or action taken in reliance on the information in the advertising materials or for any consequential, special or similar damages, even if advised of the possibility of such damages.

# RESIDENCE 403 C

2 BEDROOMS + DEN | 3 BATHROOMS



INTERIOR A/C	TERRACE	TOTAL
1955 SF	432 SF	2387 SF



## The RESIDENCE FEATURES

- Open indoor/outdoor floor plans
- Spacious terraces with expansive views
- 10' foot ceilings
- Floor-to-ceiling impact glass windows and doors
- Modern European kitchen cabinetry
- Appliance package by Subzero and Bosch
- Large-format European porcelain tile floors
- Solid wood doors with concealed hinges
- LED lighting throughout with dimmers
- Fixtures by Delta
- Smart thermostat
- Whole House Five Stage Hepa air cleaner with ultraviolet light and photocatalytic filter

## The TERRACES

527 ORTON AVENUE, FORT LAUDERDALE BEACH, FL 33304

954.604.6188

INFO@THETERRACESFTL.COM

THETERRACESFTL.COM



ORAL REPRESENTATIONS CANNOT BE RELIED UPON AS CORRECTLY STATING THE REPRESENTATIONS OF THE DEVELOPER. FOR CORRECT REPRESENTATIONS, REFERENCE SHOULD BE MADE TO THE DOCUMENTS REQUIRED BY SECTION 718.503 FLORIDA STATUTES, TO BE FURNISHED BY THE DEVELOPER TO THE BUYER OR LESSEE. NOT AN OFFER WHERE PROHIBITED BY LAW. PHOTO IS ARTIST'S RENDERING, SUBJECT TO CHANGE.



DEVELOPED BY  
LATITUDE GROUP

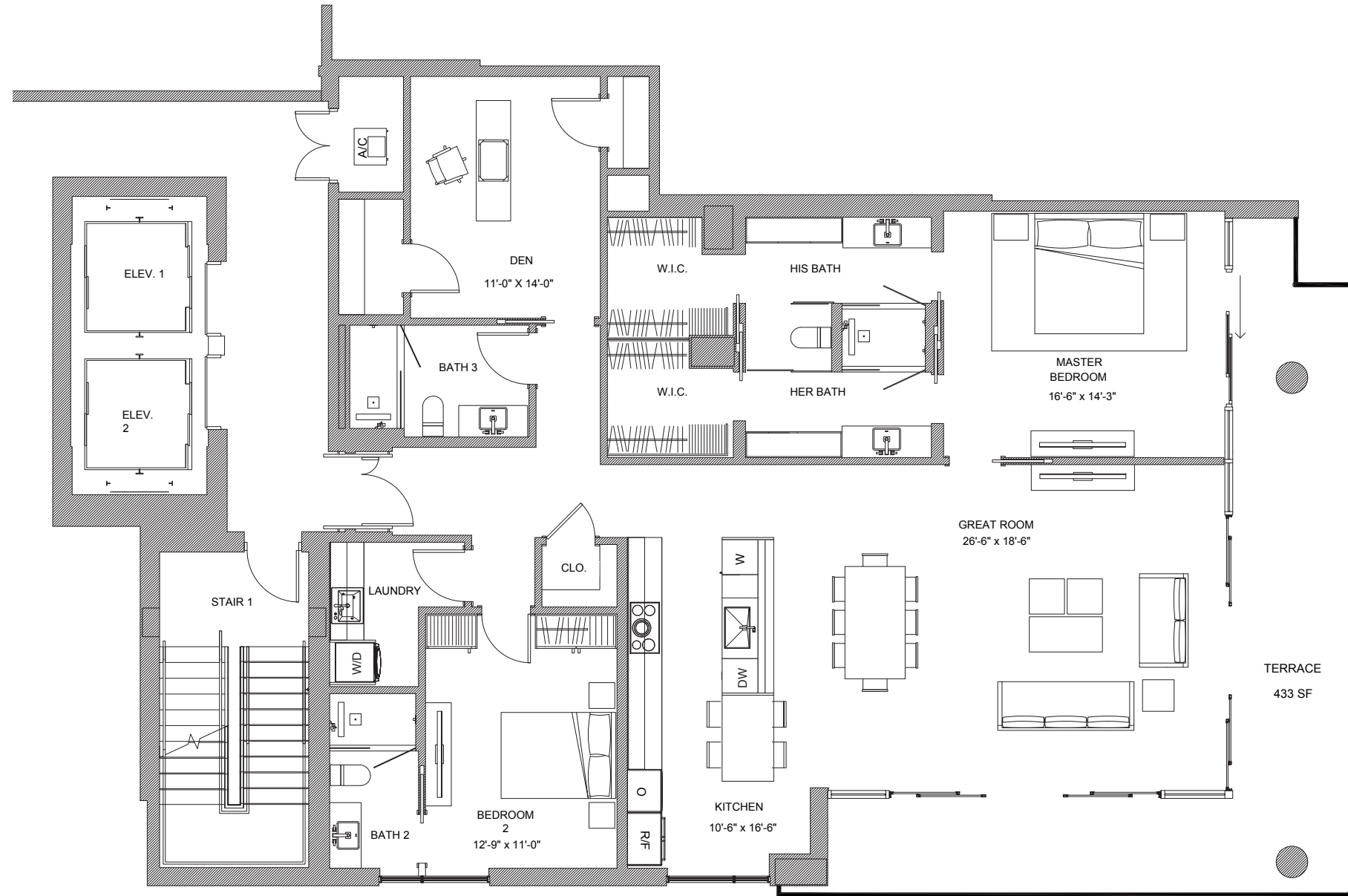
Plans, features and amenities subject to change without notice. All illustrations and plans are artist's conceptual renderings and are subject to change without notice. This advertisement does not constitute an offer in the states of NY or NJ or any jurisdiction where prior registration or other qualification is required. While we have made every attempt to ensure that the information contained in the advertising materials has been obtained from reliable sources, The Terraces, a Condominium, operating under the name of Group Latitude, LLC, is not responsible for any errors or omissions, or for the results obtained from the use of this information. All information in the advertising materials is provided "as is," with no guarantee of completeness, accuracy, timeliness or of the results obtained from the use of this information, and without warranty of any kind, express or implied, including, but not limited to warranties of performance, merchantability and fitness for a particular purpose. In no event will The Terraces, a Condominium, operating under the name of Group Latitude, LLC, its related partnerships or corporations, or the partners, agents or employees thereof be liable to you or anyone else for any decision made or action taken in reliance on the information in the advertising materials or for any consequential, special or similar damages, even if advised of the possibility of such damages.

# RESIDENCE 503 C

2 BEDROOMS + DEN | 3 BATHROOMS



INTERIOR A/C	TERRACE	TOTAL
1957 SF	433 SF	2390 SF



## The RESIDENCE FEATURES

- Open indoor/outdoor floor plans
- Spacious terraces with expansive views
- 10' foot ceilings
- Floor-to-ceiling impact glass windows and doors
- Modern European kitchen cabinetry
- Appliance package by Subzero and Bosch
- Large-format European porcelain tile floors
- Solid wood doors with concealed hinges
- LED lighting throughout with dimmers
- Fixtures by Delta
- Smart thermostat
- Whole House Five Stage Hepa air cleaner with ultraviolet light and photocatalytic filter

## The TERRACES

527 ORTON AVENUE, FORT LAUDERDALE BEACH, FL 33304

954.604.6188

INFO@THETERRACESFTL.COM

THETERRACESFTL.COM



ORAL REPRESENTATIONS CANNOT BE RELIED UPON AS CORRECTLY STATING THE REPRESENTATIONS OF THE DEVELOPER. FOR CORRECT REPRESENTATIONS, REFERENCE SHOULD BE MADE TO THE DOCUMENTS REQUIRED BY SECTION 718.503 FLORIDA STATUTES, TO BE FURNISHED BY THE DEVELOPER TO THE BUYER OR LESSEE. NOT AN OFFER WHERE PROHIBITED BY LAW. PHOTO IS ARTIST'S RENDERING, SUBJECT TO CHANGE.



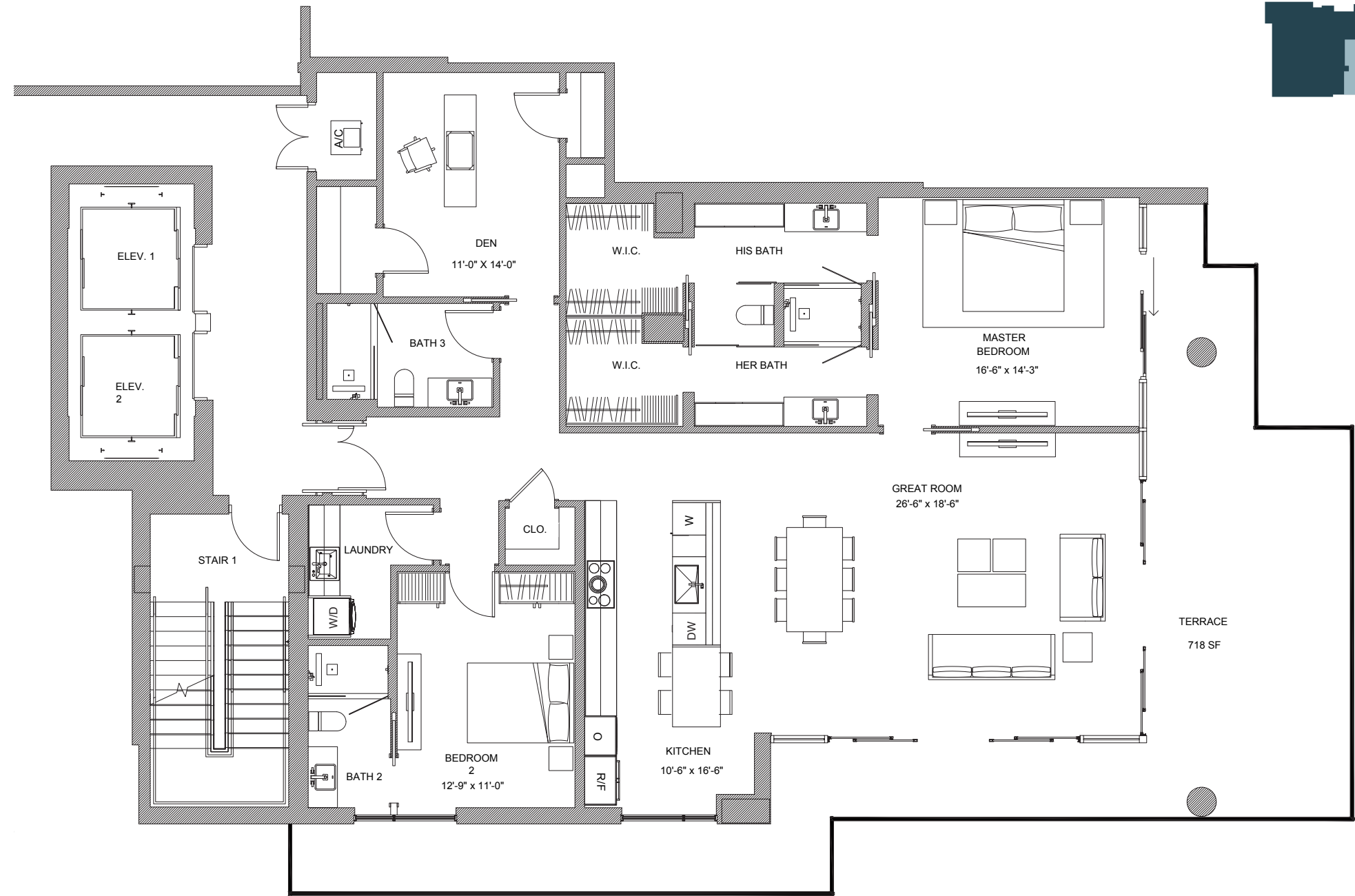
DEVELOPED BY  
LATITUDE GROUP

Plans, features and amenities subject to change without notice. All illustrations and plans are artist's conceptual renderings and are subject to change without notice. This advertisement does not constitute an offer in the states of NY or NJ or any jurisdiction where prior registration or other qualification is required. While we have made every attempt to ensure that the information contained in the advertising materials has been obtained from reliable sources, The Terraces, a Condominium, operating under the name of Group Latitude, LLC, is not responsible for any errors or omissions, or for the results obtained from the use of this information. All information in the advertising materials is provided "as is," with no guarantee of completeness, accuracy, timeliness or of the results obtained from the use of this information, and without warranty of any kind, express or implied, including, but not limited to warranties of performance, merchantability and fitness for a particular purpose. In no event will The Terraces, a Condominium, operating under the name of Group Latitude, LLC, its related partnerships or corporations, or the partners, agents or employees thereof be liable to you or anyone else for any decision made or action taken in reliance on the information in the advertising materials or for any consequential, special or similar damages, even if advised of the possibility of such damages.

# RESIDENCE 603 C

2 BEDROOMS + DEN | 3 BATHROOMS

INTERIOR A/C	TERRACE	TOTAL
1956 SF	604 SF	2560 SF



## The RESIDENCE FEATURES

- Open indoor/outdoor floor plans
- Spacious terraces with expansive views
- 10' foot ceilings
- Floor-to-ceiling impact glass windows and doors
- Modern European kitchen cabinetry
- Appliance package by Subzero and Bosch
- Large-format European porcelain tile floors
- Solid wood doors with concealed hinges
- LED lighting throughout with dimmers
- Fixtures by Delta
- Smart thermostat
- Whole House Five Stage Hepa air cleaner with ultraviolet light and photocatalytic filter

## The TERRACES

527 ORTON AVENUE, FORT LAUDERDALE BEACH, FL 33304

954.604.6188

INFO@THETERRACESFTL.COM

THETERRACESFTL.COM



ORAL REPRESENTATIONS CANNOT BE RELIED UPON AS CORRECTLY STATING THE REPRESENTATIONS OF THE DEVELOPER. FOR CORRECT REPRESENTATIONS, REFERENCE SHOULD BE MADE TO THE DOCUMENTS REQUIRED BY SECTION 718.503 FLORIDA STATUTES, TO BE FURNISHED BY THE DEVELOPER TO THE BUYER OR LESSEE. NOT AN OFFER WHERE PROHIBITED BY LAW. PHOTO IS ARTIST'S RENDERING, SUBJECT TO CHANGE.



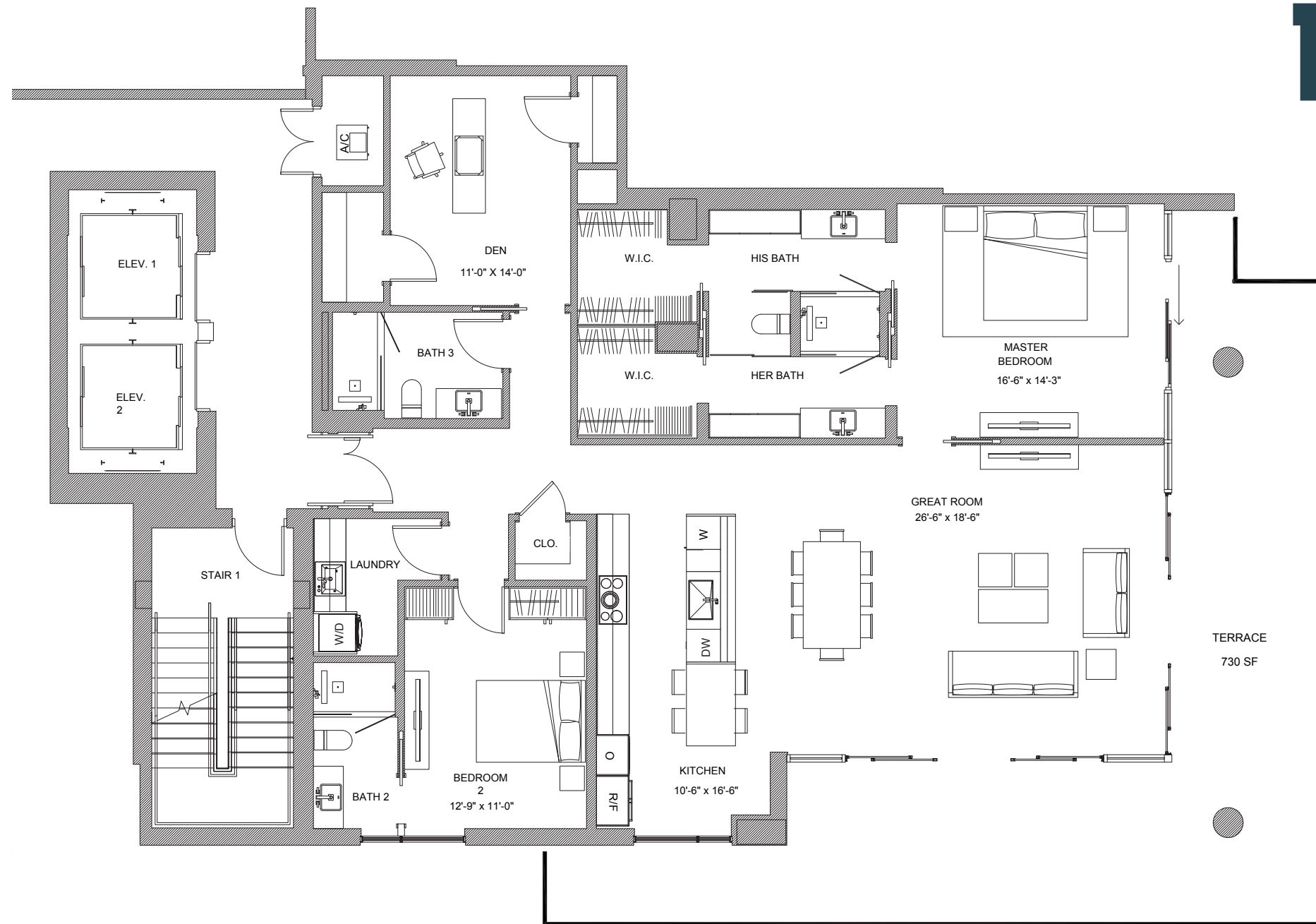
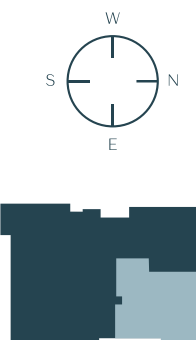
DEVELOPED BY  
LATITUDE GROUP

Plans, features and amenities subject to change without notice. All illustrations and plans are artist's conceptual renderings and are subject to change without notice. This advertisement does not constitute an offer in the states of NY or NJ or any jurisdiction where prior registration or other qualification is required. While we have made every attempt to ensure that the information contained in the advertising materials has been obtained from reliable sources, The Terraces, a Condominium, operating under the name of Group Latitude, LLC, is not responsible for any errors or omissions, or for the results obtained from the use of this information. All information in the advertising materials is provided "as is," with no guarantee of completeness, accuracy, timeliness or of the results obtained from the use of this information, and without warranty of any kind, express or implied, including, but not limited to warranties of performance, merchantability and fitness for a particular purpose. In no event will The Terraces, a Condominium, operating under the name of Group Latitude, LLC, its related partnerships or corporations, or the partners, agents or employees thereof be liable to you or anyone else for any decision made or action taken in reliance on the information in the advertising materials or for any consequential, special or similar damages, even if advised of the possibility of such damages.

# RESIDENCE 703 C

2 BEDROOMS + DEN | 3 BATHROOMS

INTERIOR A/C	TERRACE	TOTAL
1956 SF	730 SF	2560 SF



## The RESIDENCE FEATURES

- Open indoor/outdoor floor plans
- Spacious terraces with expansive views
- 10' foot ceilings
- Floor-to-ceiling impact glass windows and doors
- Modern European kitchen cabinetry
- Appliance package by Subzero and Bosch
- Large-format European porcelain tile floors
- Solid wood doors with concealed hinges
- LED lighting throughout with dimmers
- Fixtures by Delta
- Smart thermostat
- Whole House Five Stage Hepa air cleaner with ultraviolet light and photocatalytic filter

## The TERRACES

527 ORTON AVENUE, FORT LAUDERDALE BEACH, FL 33304

954.604.6188

INFO@THETERRACESFTL.COM

THETERRACESFTL.COM



ORAL REPRESENTATIONS CANNOT BE RELIED UPON AS CORRECTLY STATING THE REPRESENTATIONS OF THE DEVELOPER. FOR CORRECT REPRESENTATIONS, REFERENCE SHOULD BE MADE TO THE DOCUMENTS REQUIRED BY SECTION 718.503 FLORIDA STATUTES, TO BE FURNISHED BY THE DEVELOPER TO THE BUYER OR LESSEE. NOT AN OFFER WHERE PROHIBITED BY LAW. PHOTO IS ARTIST'S RENDERING, SUBJECT TO CHANGE.



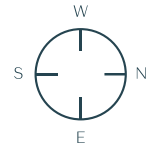
DEVELOPED BY  
LATITUDE GROUP

Plans, features and amenities subject to change without notice. All illustrations and plans are artist's conceptual renderings and are subject to change without notice. This advertisement does not constitute an offer in the states of NY or NJ or any jurisdiction where prior registration or other qualification is required. While we have made every attempt to ensure that the information contained in the advertising materials has been obtained from reliable sources, The Terraces, a Condominium, operating under the name of Group Latitude, LLC, is not responsible for any errors or omissions, or for the results obtained from the use of this information. All information in the advertising materials is provided "as is," with no guarantee of completeness, accuracy, timeliness or of the results obtained from the use of this information, and without warranty of any kind, express or implied, including, but not limited to warranties of performance, merchantability and fitness for a particular purpose. In no event will The Terraces, a Condominium, operating under the name of Group Latitude, LLC, its related partnerships or corporations, or the partners, agents or employees thereof be liable to you or anyone else for any decision made or action taken in reliance on the information in the advertising materials or for any consequential, special or similar damages, even if advised of the possibility of such damages.

# RESIDENCE 803 C

2 BEDROOMS + DEN | 3 BATHROOMS

INTERIOR A/C	TERRACE	TOTAL
1957 SF	564 SF	2521 SF



## The RESIDENCE FEATURES

- Open indoor/outdoor floor plans
- Spacious terraces with expansive views
- 10' foot ceilings
- Floor-to-ceiling impact glass windows and doors
- Modern European kitchen cabinetry
- Appliance package by Subzero and Bosch
- Large-format European porcelain tile floors
- Solid wood doors with concealed hinges
- LED lighting throughout with dimmers
- Fixtures by Delta
- Smart thermostat
- Whole House Five Stage Hepa air cleaner with ultraviolet light and photocatalytic filter

## The TERRACES

527 ORTON AVENUE, FORT LAUDERDALE BEACH, FL 33304

954.604.6188

INFO@THETERRACESFTL.COM

THETERRACESFTL.COM



ORAL REPRESENTATIONS CANNOT BE RELIED UPON AS CORRECTLY STATING THE REPRESENTATIONS OF THE DEVELOPER. FOR CORRECT REPRESENTATIONS, REFERENCE SHOULD BE MADE TO THE DOCUMENTS REQUIRED BY SECTION 718.503 FLORIDA STATUTES, TO BE FURNISHED BY THE DEVELOPER TO THE BUYER OR LESSEE. NOT AN OFFER WHERE PROHIBITED BY LAW. PHOTO IS ARTIST'S RENDERING, SUBJECT TO CHANGE.



DEVELOPED BY  
LATITUDE GROUP

Plans, features and amenities subject to change without notice. All illustrations and plans are artist's conceptual renderings and are subject to change without notice. This advertisement does not constitute an offer in the states of NY or NJ or any jurisdiction where prior registration or other qualification is required. While we have made every attempt to ensure that the information contained in the advertising materials has been obtained from reliable sources, The Terraces, a Condominium, operating under the name of Group Latitude, LLC, is not responsible for any errors or omissions, or for the results obtained from the use of this information. All information in the advertising materials is provided "as is," with no guarantee of completeness, accuracy, timeliness or of the results obtained from the use of this information, and without warranty of any kind, express or implied, including, but not limited to warranties of performance, merchantability and fitness for a particular purpose. In no event will The Terraces, a Condominium, operating under the name of Group Latitude, LLC, its related partnerships or corporations, or the partners, agents or employees thereof be liable to you or anyone else for any decision made or action taken in reliance on the information in the advertising materials or for any consequential, special or similar damages, even if advised of the possibility of such damages.

# PENTHOUSE 1

DUPLEX | 3 BEDROOMS AND 3 1/2 BATHROOMS

## FIRST FLOOR

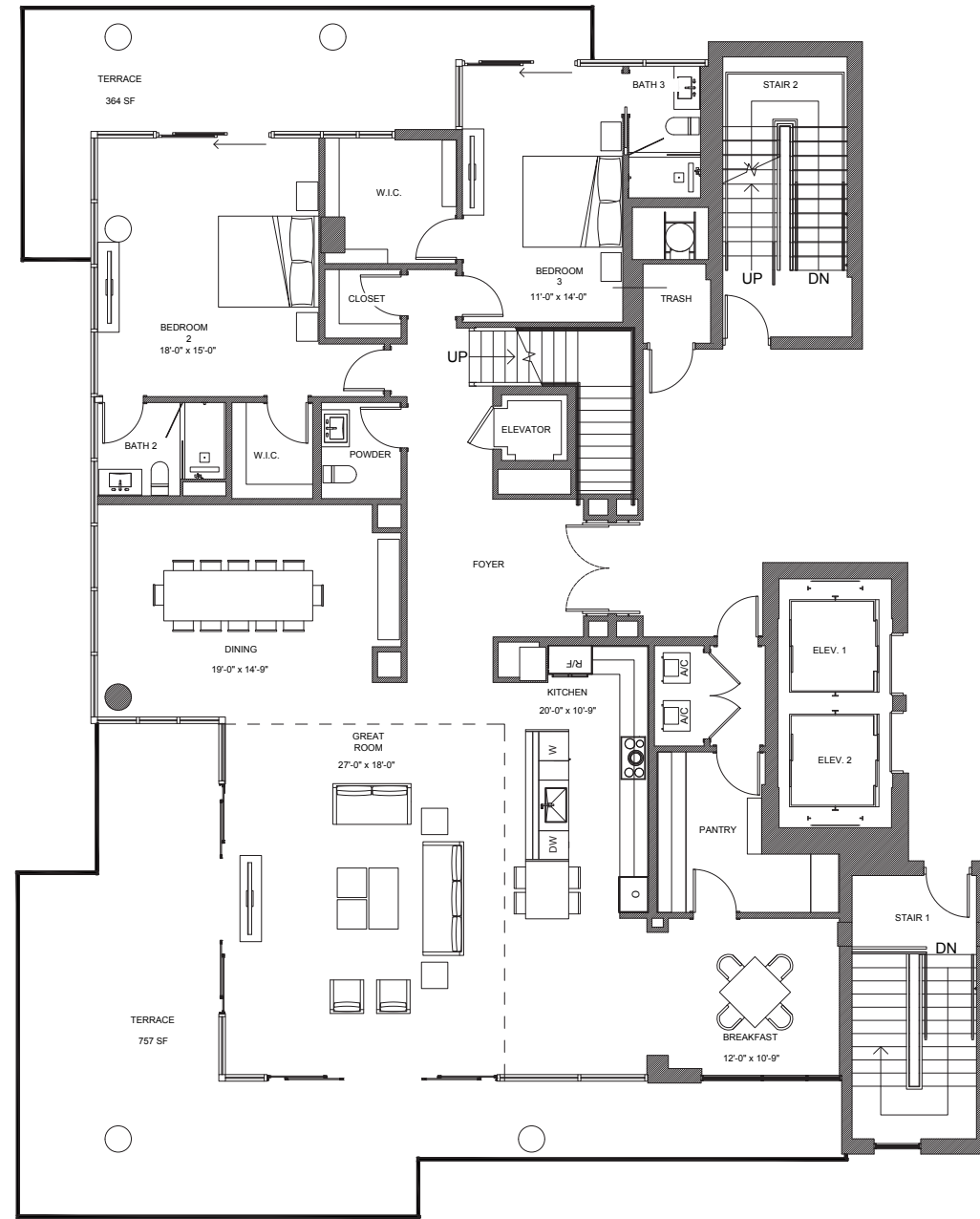
INTERIOR A/C	TERRACE	TOTAL
2656 SF	1121 SF	3777 SF

## SECOND FLOOR

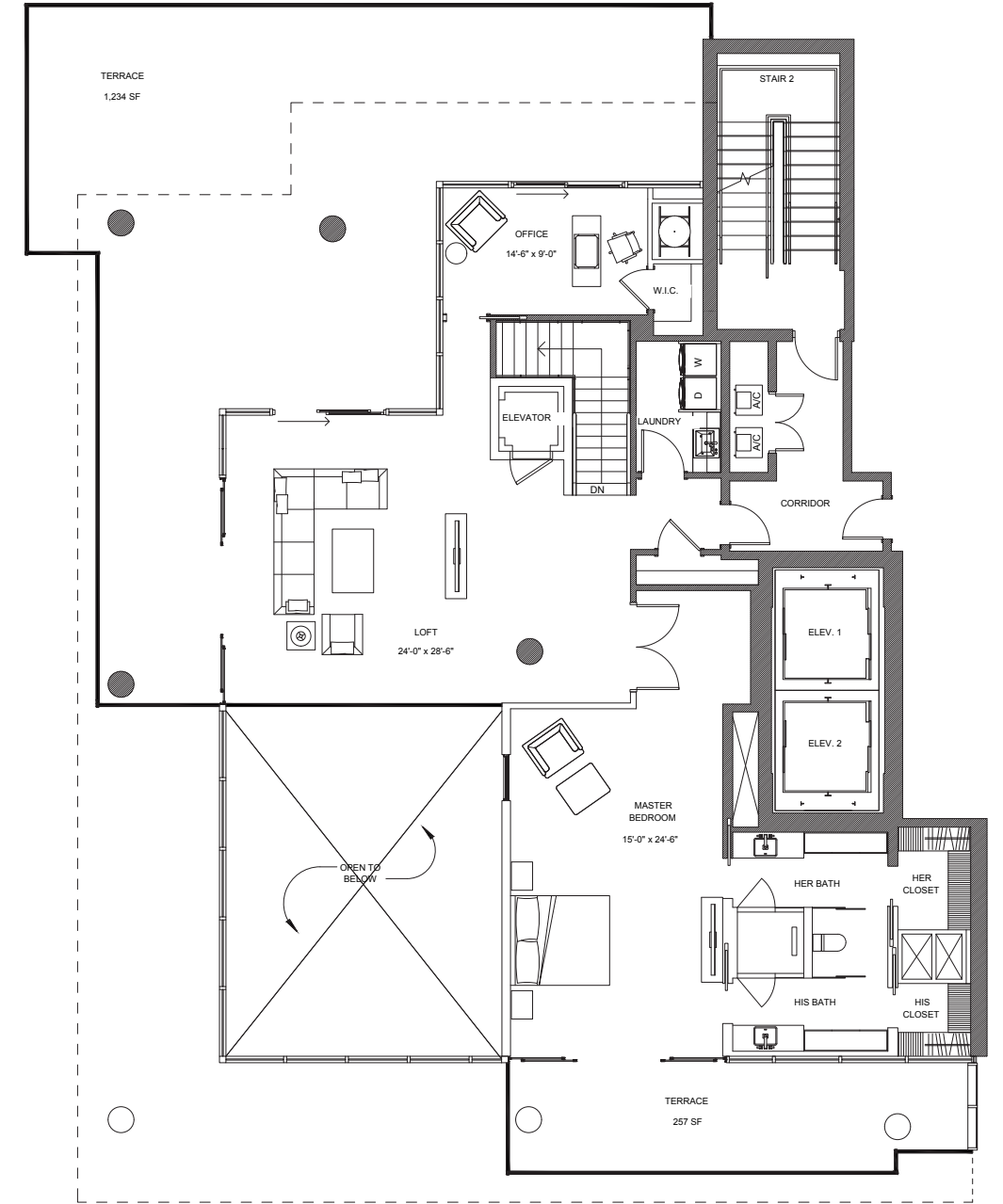
INTERIOR A/C	TERRACE	TOTAL
1763 SF	1491 SF	3254 SF

## The PENTHOUSE FEATURES

- Open indoor/outdoor floor plans
- Spacious terraces with expansive views
- 10' foot ceilings
- Floor-to-ceiling impact glass windows and doors
- Modern European kitchen cabinetry
- Appliance package by Subzero and Bosch
- Large-format European porcelain tile floors
- Solid wood doors with concealed hinges
- LED lighting throughout with dimmers
- Fixtures by Delta
- Smart thermostat
- Whole House Five Stage Hepa air cleaner with ultraviolet light and photocatalytic filter



FIRST FLOOR



SECOND FLOOR

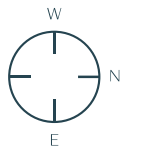
The TERRACES

527 ORTON AVENUE, FORT LAUDERDALE BEACH, FL 33304

954.604.6188

INFO@THETERRACESFTL.COM

THETERRACESFTL.COM



ORAL REPRESENTATIONS CANNOT BE RELIED UPON AS CORRECTLY STATING THE REPRESENTATIONS OF THE DEVELOPER. FOR CORRECT REPRESENTATIONS, REFERENCE SHOULD BE MADE TO THE DOCUMENTS REQUIRED BY SECTION 718.503 FLORIDA STATUTES, TO BE FURNISHED BY THE DEVELOPER TO THE BUYER OR LESSEE. NOT AN OFFER WHERE PROHIBITED BY LAW. PHOTO IS ARTIST'S RENDERING, SUBJECT TO CHANGE.

Douglas Elliman

DEVELOPED BY  
LATITUDE GROUP

Plans, features and amenities subject to change without notice. All illustrations and plans are artist's conceptual renderings and are subject to change without notice. This advertisement does not constitute an offer in the states of NY or NJ or any jurisdiction where prior registration or other qualification is required. While we have made every attempt to ensure that the information contained in the advertising materials has been obtained from reliable sources, The Terraces, a Condominium, operating under the name of Group Latitude, LLC, is not responsible for any errors or omissions, or for the results obtained from the use of this information, and without warranty of any kind, express or implied, including, but not limited to, warranties of performance, merchantability and fitness for a particular purpose. In no event will The Terraces, a Condominium, operating under the name of Group Latitude, LLC, its related partnerships or corporations, or the partners, agents or employees thereof be liable to you or anyone else for any decision made or action taken in reliance on the information in the advertising materials or for any consequential, special or similar damages, even if advised of the possibility of such damages.

# PENTHOUSE 2

DUPLEX | 3 BEDROOMS + DEN AND 3 1/2 BATHROOMS

## FIRST FLOOR

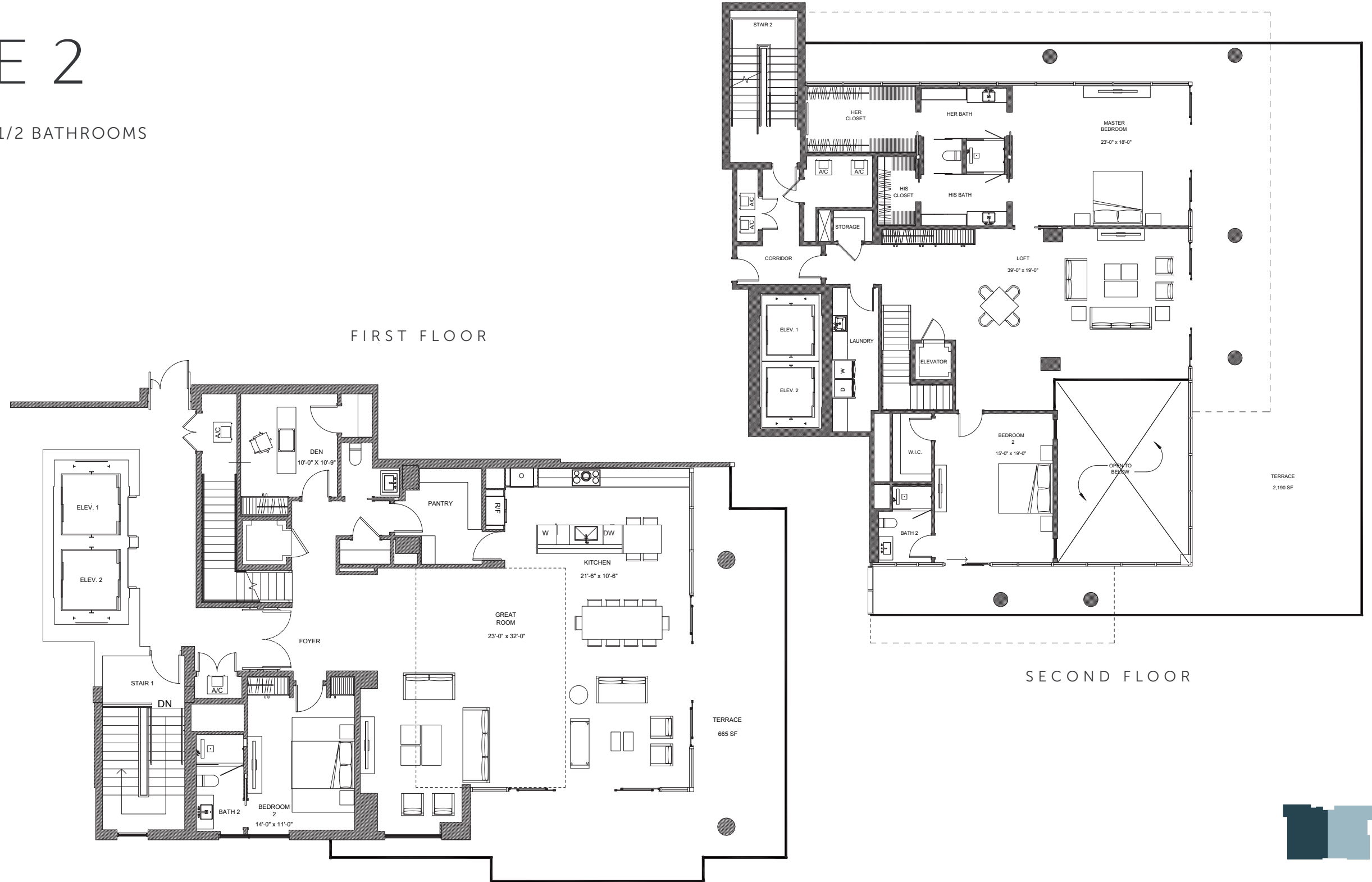
INTERIOR A/C	TERRACE	TOTAL
1957 SF	665 SF	2622 SF

## SECOND FLOOR

INTERIOR A/C	TERRACE	TOTAL
2387 SF	2190 SF	4577 SF

## The PENTHOUSE FEATURES

- Open indoor/outdoor floor plans
- Spacious terraces with expansive views
- 10' foot ceilings
- Floor-to-ceiling impact glass windows and doors
- Modern European kitchen cabinetry
- Appliance package by Subzero and Bosch
- Large-format European porcelain tile floors
- Solid wood doors with concealed hinges
- LED lighting throughout with dimmers
- Fixtures by Delta
- Smart thermostat
- Whole House Five Stage Hepa air cleaner with ultraviolet light and photocatalytic filter



# The TERRACES

527 ORTON AVENUE, FORT LAUDERDALE BEACH, FL 33304

954.604.6188

INFO@THETERRACESFTL.COM

THETERRACESFTL.COM



ORAL REPRESENTATIONS CANNOT BE RELIED UPON AS CORRECTLY STATING THE REPRESENTATIONS OF THE DEVELOPER. FOR CORRECT REPRESENTATIONS, REFERENCE SHOULD BE MADE TO THE DOCUMENTS REQUIRED BY SECTION 718.503 FLORIDA STATUTES, TO BE FURNISHED BY THE DEVELOPER TO THE BUYER OR LESSEE. NOT AN OFFER WHERE PROHIBITED BY LAW. PHOTO IS ARTIST'S RENDERING, SUBJECT TO CHANGE.



DEVELOPED BY  
LATITUDE GROUP

Plans, features and amenities subject to change without notice. All illustrations and plans are artist's conceptual renderings and are subject to change without notice. This advertisement does not constitute an offer in the states of NY or NJ or any jurisdiction where prior registration or other qualification is required. While we have made every attempt to ensure that the information contained in the advertising materials has been obtained from reliable sources, The Terraces, a Condominium, operating under the name of Group Latitude, LLC, is not responsible for any errors or omissions, or for the results obtained from the use of this information. All information in the advertising materials is provided "as is," with no guarantee of completeness, accuracy, timeliness or of the results obtained from the use of this information, and without warranty of any kind, express or implied, including, but not limited to, warranties of performance, merchantability and fitness for a particular purpose. In no event will The Terraces, a Condominium, operating under the name of Group Latitude, LLC, its related partnerships or corporations, or the partners, agents or employees thereof be liable to you or anyone else for any decision made or action taken in reliance on the information in the advertising materials or for any consequential, special or similar damages, even if advised of the possibility of such damages.