

MONAD
TERRACE
SOUTH BEACH BAY
BY ATELIERS JEAN NOUVEL

3-10C

2 BEDROOMS / 2.5 BATHS

TOTAL: 2027 SQ FT / 188 SQ M
INTERIOR: 1453 SQ FT / 135 SQ M
EXTERIOR: 574 SQ FT / 53 SQ M



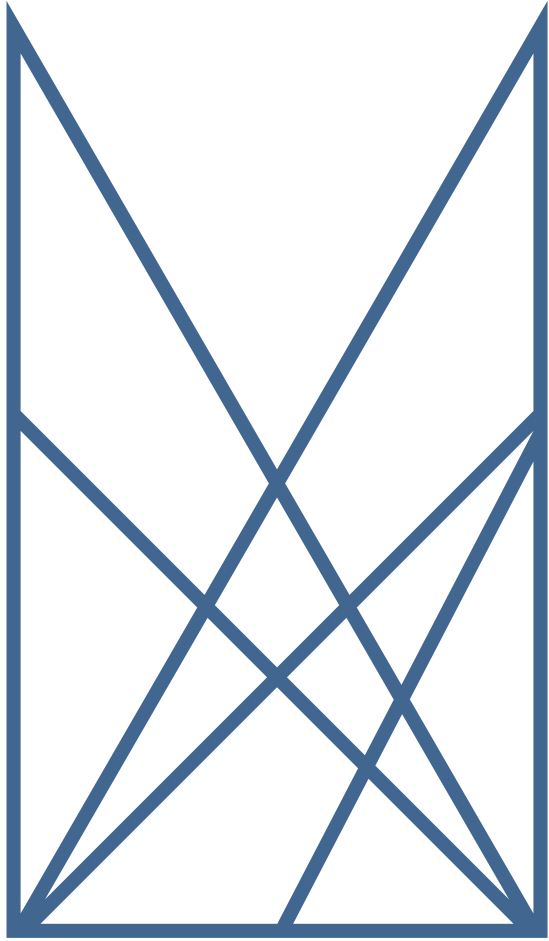
MIAMI BEACH

monadterrace.miami

Sales Gallery
1400 Alton Road Miami Beach FL 33139
305 695 0888
info@monadterrace.miami

Exclusive Marketing & Sales /
Douglas Elliman Development Marketing

Developer / **JDS**

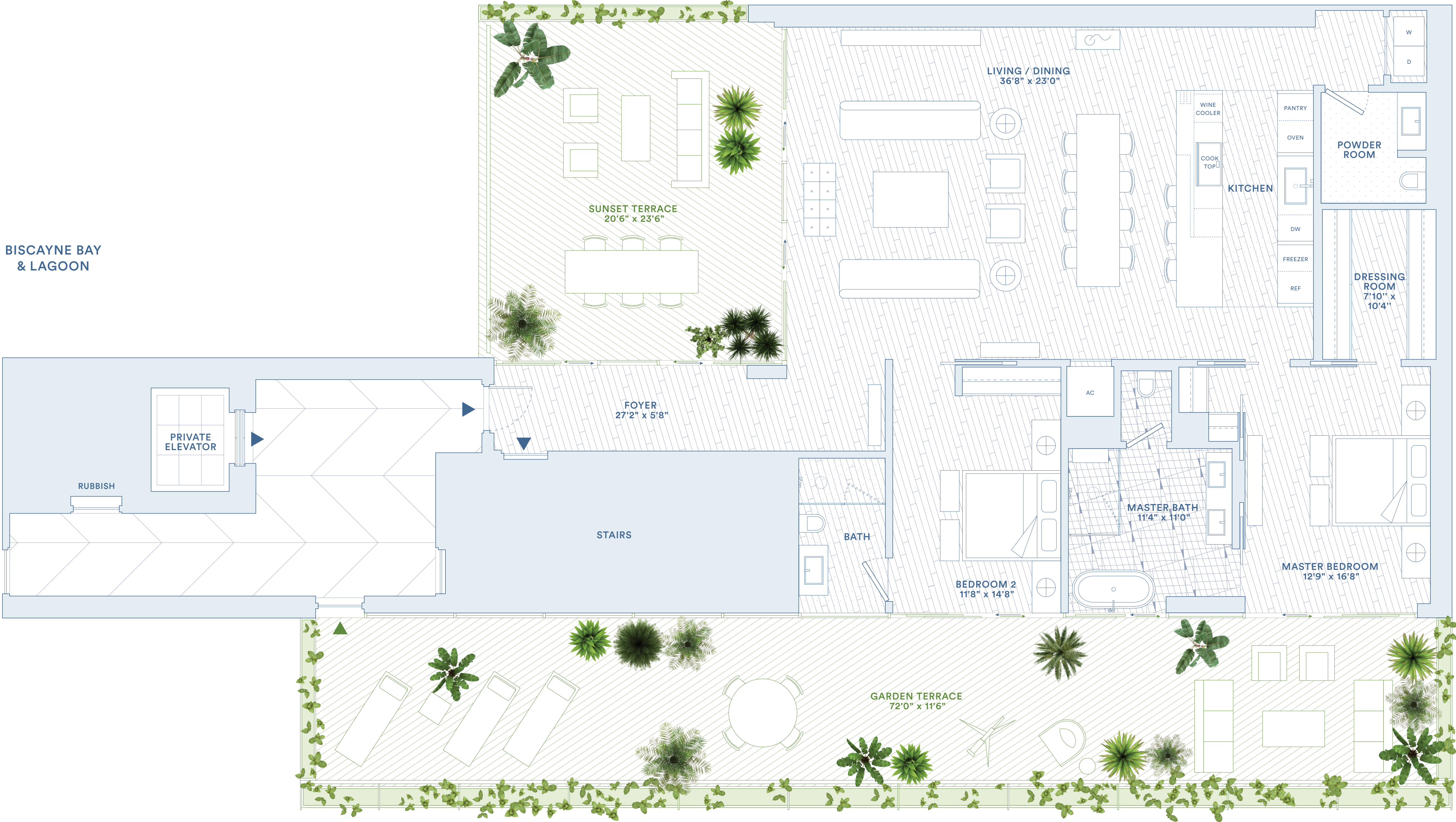


MONAD
TERRACE
SOUTH BEACH BAY
BY ATELIERS JEAN NOUVEL

3-5E

2 BEDROOMS / 2.5 BATHS

TOTAL: 3573 SQ FT / 332 SQ M
INTERIOR: 2097 SQ FT / 195 SQ M
EXTERIOR: 1476 SQ FT / 137 SQ M



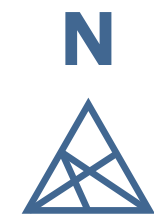
monadterrace.miami

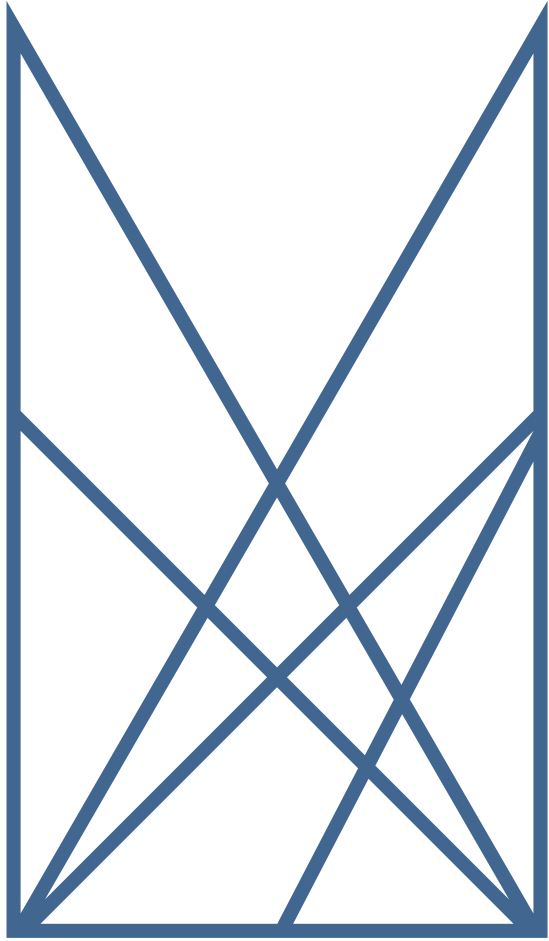
Sales Gallery
1400 Alton Road Miami Beach FL 33139
305 695 0888
info@monadterrace.miami

Exclusive Marketing & Sales /
Douglas Elliman Development Marketing

Developer / **JDS**

THE COMPLETE OFFERING TERMS ARE IN A FLORIDA PROSPECTUS AVAILABLE FROM DEVELOPER. A NEW YORK
CPS-12 FILING HAS BEEN ACCEPTED IN NEW YORK AS FILE NO. CP16-0145, AND IS AVAILABLE FROM DEVELOPER.





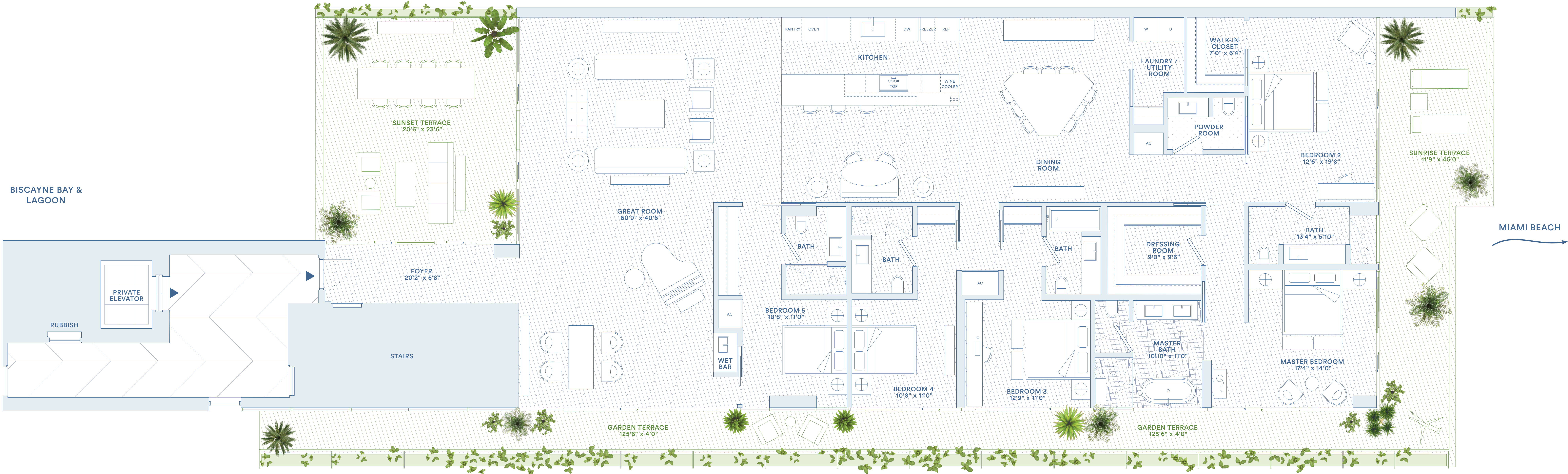
**MONAD
TERRACE**
SOUTH BEACH BAY
BY ATELIERS JEAN NOUVEL



11-12E

5 BEDROOMS / 5.5 BATHS

TOTAL: 5616 SQ FT / 522 SQ M
INTERIOR: 3996 SQ FT / 371 SQ M
EXTERIOR: 1620 SQ FT / 150 SQ M

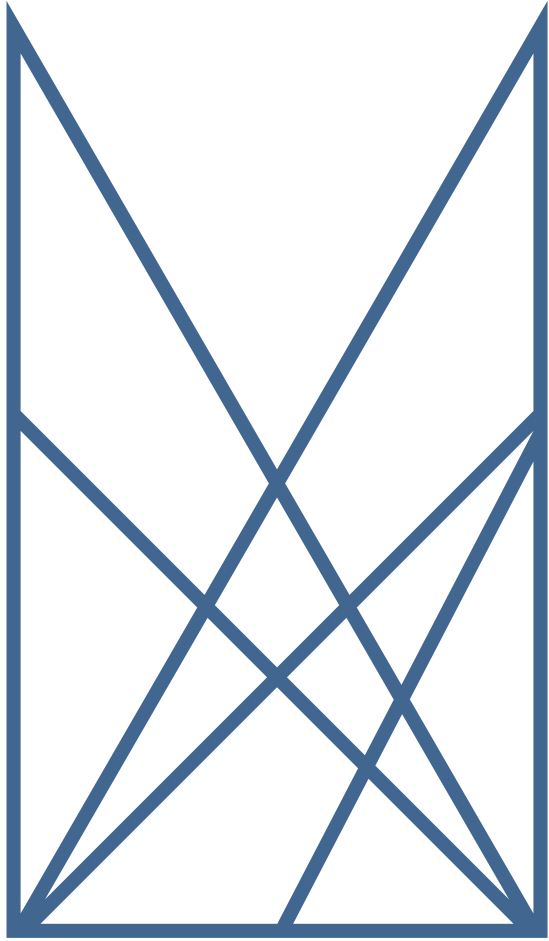


monadterrace.miami

Sales Gallery
1400 Alton Road Miami Beach FL 33139
305 695 0888
info@monadterrace.miami

Exclusive Marketing & Sales /
Douglas Elliman Development Marketing

Developer / **JDS**



MONAD
TERRACE
SOUTH BEACH BAY
BY ATELIERS JEAN NOUVEL

4A

4 BEDROOMS / 4.5 BATHS

TOTAL: 4378 SQ FT / 407 SQ M
INTERIOR: 3217 SQ FT / 299 SQ M
EXTERIOR: 1161 SQ FT / 108 SQ M



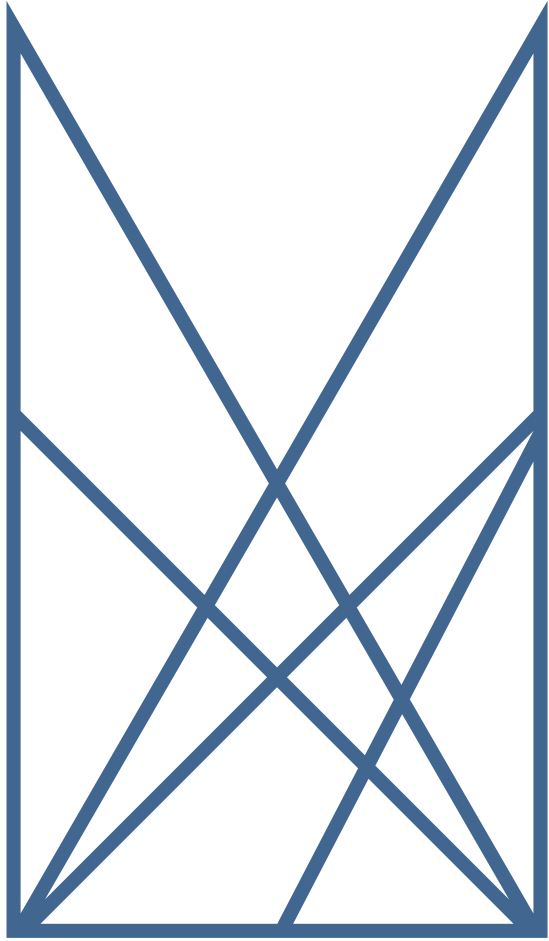
MIAMI BEACH

monadterrace.miami

Sales Gallery
1400 Alton Road Miami Beach FL 33139
305 695 0888
info@monadterrace.miami

Exclusive Marketing & Sales /
Douglas Elliman Development Marketing

Developer / **JDS**



MONAD
TERRACE
SOUTH BEACH BAY
BY ATELIERS JEAN NOUVEL

3-5D

3 BEDROOMS / 3.5 BATHS

TOTAL: 3515 SQ FT / 327 SQ M
INTERIOR: 2496 SQ FT / 232 SQ M
EXTERIOR: 1019 SQ FT / 95 SQ M

BISCAYNE BAY

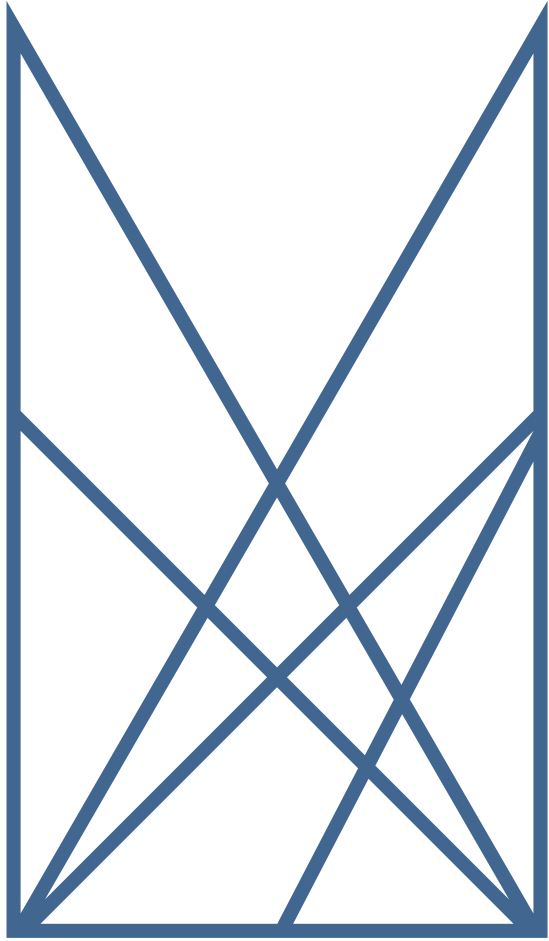


MIAMI BEACH

monadterrace.miami
Sales Gallery
1400 Alton Road Miami Beach FL 33139
305 695 0888
info@monadterrace.miami

Exclusive Marketing & Sales /
Douglas Elliman Development Marketing

Developer / **JDS**



MONAD
TERRACE
SOUTH BEACH BAY
BY ATELIERS JEAN NOUVEL

3-5F

3 BEDROOMS / 3.5 BATHS

TOTAL: 4900 SQ FT / 455 SQ M
INTERIOR: 2658 SQ FT / 247 SQ M
EXTERIOR: 2242 SQ FT / 208 SQ M



monadterrace.miami

Sales Gallery
1400 Alton Road Miami Beach FL 33139
305 695 0888
info@monadterrace.miami

Exclusive Marketing & Sales /
Douglas Elliman Development Marketing

Developer / **JDS**

THE COMPLETE OFFERING TERMS ARE IN A FLORIDA PROSPECTUS AVAILABLE FROM DEVELOPER, A NEW YORK
CPS-12 FILING HAS BEEN ACCEPTED IN NEW YORK AS FILE NO. CP16-0145, AND IS AVAILABLE FROM DEVELOPER.

