

CIELO







## **WELCOME TO CIELO**

36 WATERFRONT, LUXURY CONDOMINIUMS OFFER PRIVATE RETREATS TO CALL HOME. EACH RESIDENCE IS EQUIPPED WITH PRIVATE ELEVATOR VESTIBULE AND EXPANSIVE TERRACES TO MAXIMIZE THE UNOBSTRUCTED VIEW OF THE BAY. THESE UNIQUE FLOW-THROUGH UNITS OPTIMIZE THE CIRCULATION OF BOTH AIR AND LIGHT. THE ROOF-TOP POOL DECK PROVIDES ACCESS TO THE BEST VIEW OF MIAMI WHERE YOU CAN RELAX WHILE STARGAZING OR CLOUD-WATCHING. TAKE TIME OUT AND RETREAT INTO CIELO.









#### BUILDING FEATURES

- ISLAND LIVING WITH PUBLIC BAYWALK
- PRIVATE ELEVATOR VESTIBULES
- DIRECT BAYFRONT ACCESS WITH PANORAMIC VIEWS
- PRIVATE MARINA
- FLOW-THROUGH FLOOR PLANS
- OVERSIZED TERRACES
- DESIGNER CABINETS AND APPLIANCES
- CONCIERGE SERVICE
- ROOF-TOP POOL, GYM AND COMMUNITY ROOM
- PENTHOUSE UNITS FEATURE PRIVATE SKY TERRACES WITH SUMMER KITCHENS AND SPAS
- LANAI LEVEL UNITS FEATURE EXPANSIVE PRIVATE GARDENS AND/OR SPAS

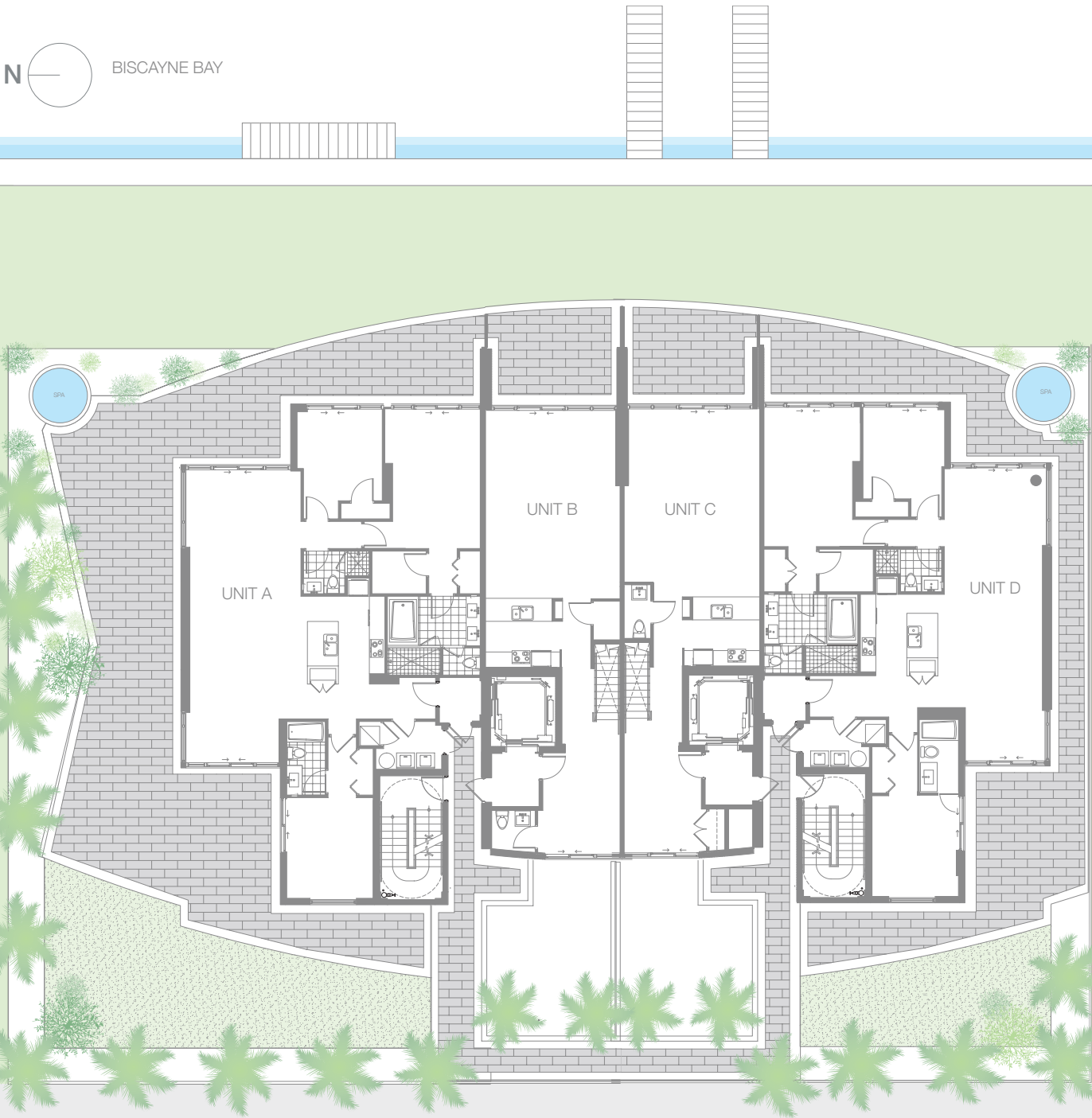








# SITE PLAN



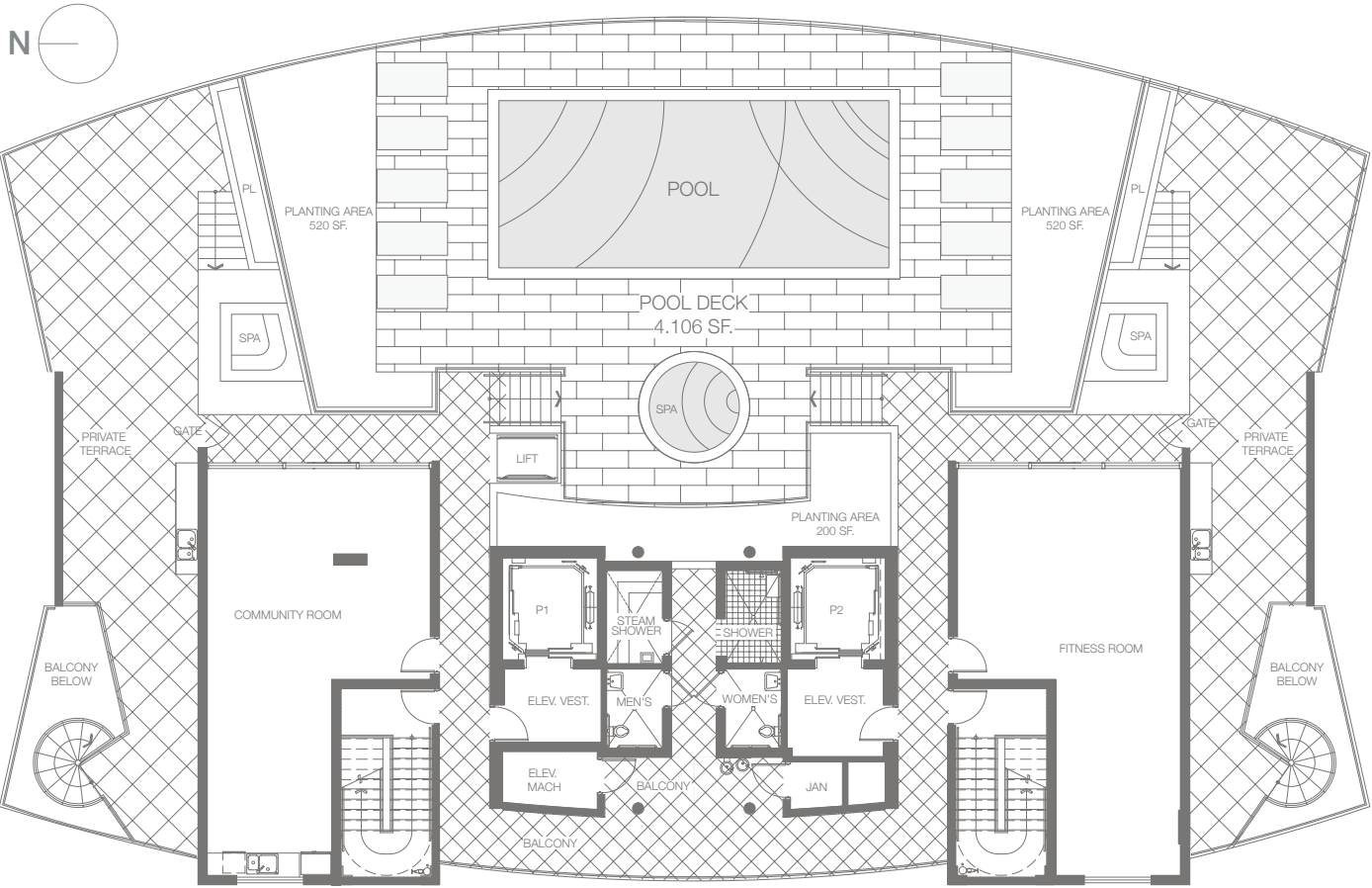






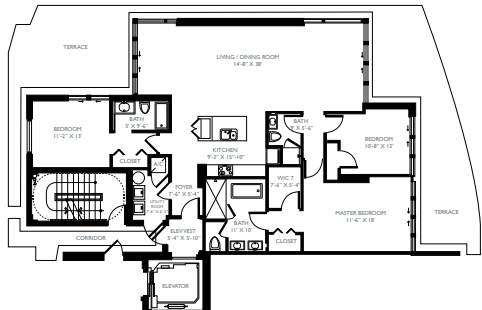
# ROOF TOP POOL DECK

- POOL AND SUN DECK WITH LUSH LANDSCAPING
- PANORAMIC VIEWS OF BISCAYNE BAY
- COMMUNITY ROOM
- STEAM SHOWERS
- SPA
- FITNESS ROOM
- MENS AND WOMENS CHANGING ROOMS
- PENTHOUSE UNITS FEATURE PRIVATE SKY TERRACES WITH SUMMER KITCHENS AND SPAS WITH DIRECT ROOFTOP ACCESS

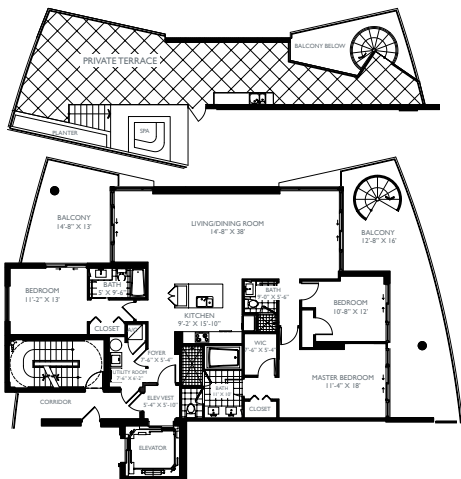




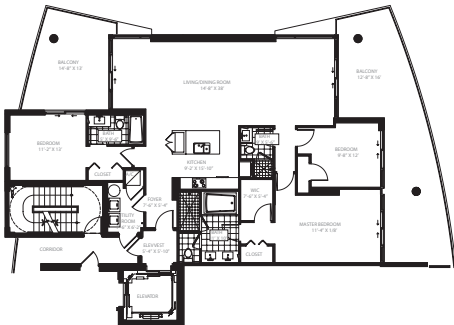
MARINA FLAT A - LANAI LEVEL  
1900 SF/AC | 3528 SF/TERRACE



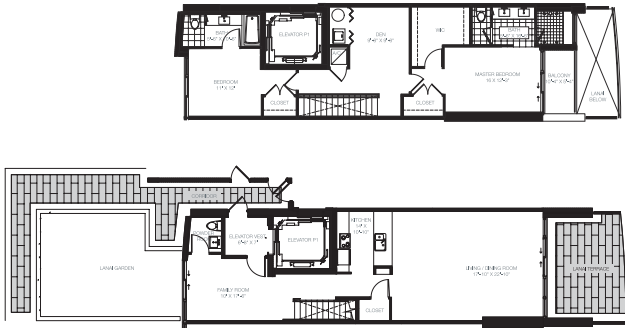
MARINA FLAT A - PENTHOUSE LEVEL  
1900 SF/AC | 1688 SF/TERRACE



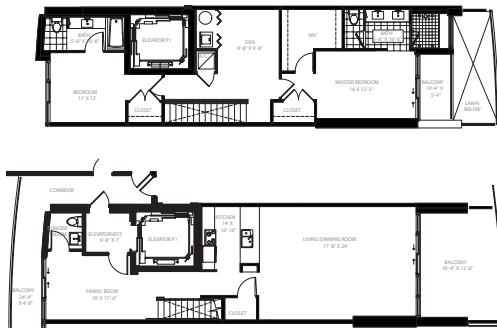
MARINA FLAT A - UPPER LEVEL  
1910 SF/AC | 690 SF/TERRACE



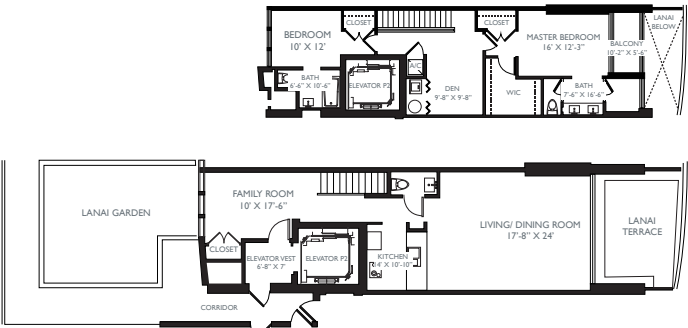
MARINA TOWNHOME B - LANAI LEVEL  
1915 SF/AC | 648 SF/TERRACE



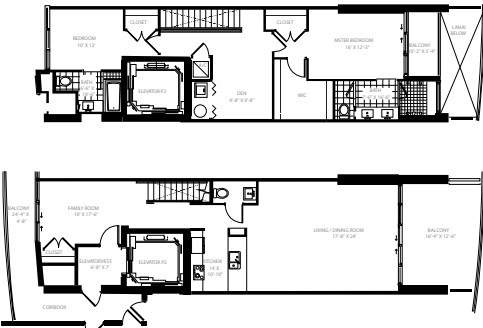
MARINA TOWNHOME B - UPPER LEVEL  
1915 SF/AC | 248 SF/TERRACE



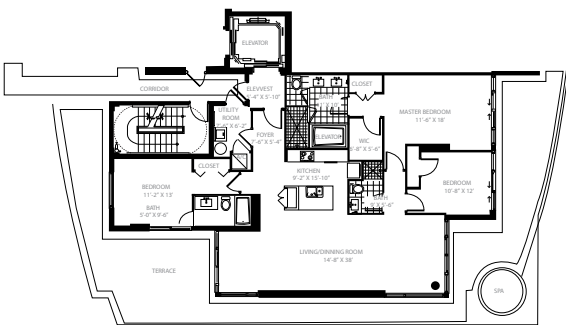
MARINA TOWNHOME C - LANAI LEVEL  
1864 SF/AC | 640 SF/TERRACE



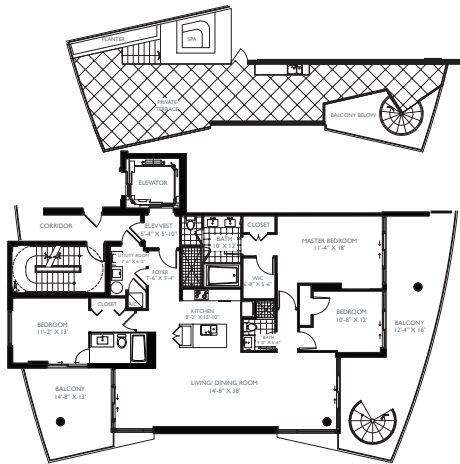
MARINA TOWNHOME C - UPPER LEVEL  
1864 SF/AC | 268 SF/TERRACE



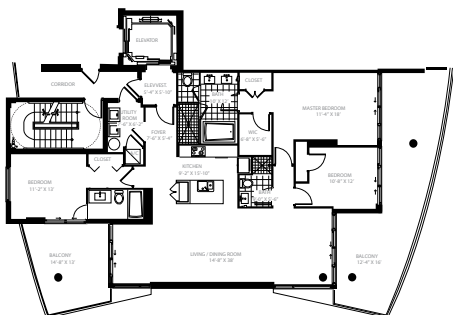
MARINA FLAT D - LANAI LEVEL  
1830 SF/AC | 1850 SF/TERRACE



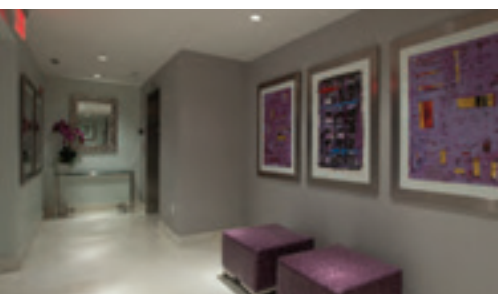
MARINA FLAT D - PENTHOUSE LEVEL  
1830 SF/AC | 1554 SF/TERRACE



MARINA FLAT D - PENTHOUSE LEVEL  
1840 SF/AC | 650 SF/TERRACE







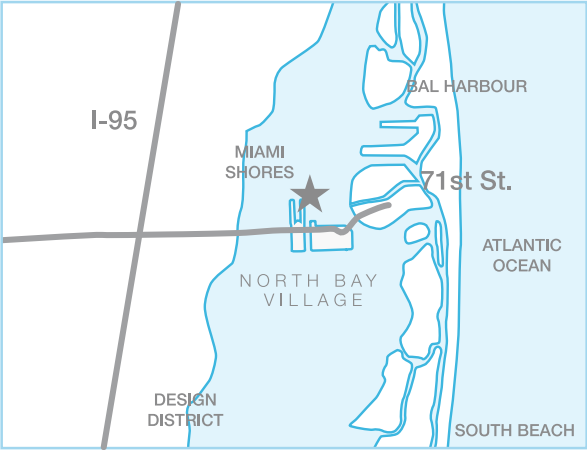
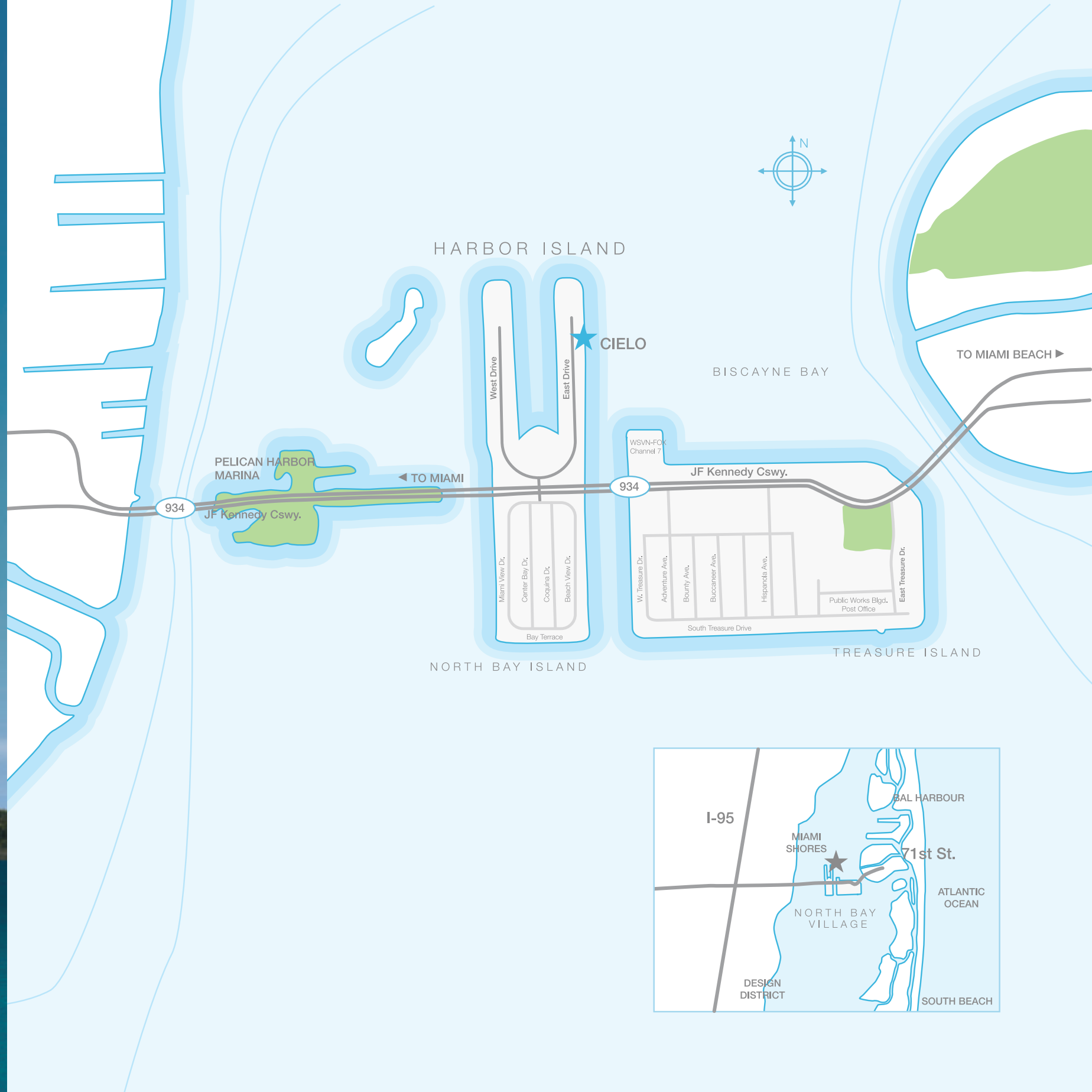
## ARCHITECT

**LUIS REVUELTA**, PRINCIPAL OF REVUELTA, VEGA, LEON PC IS ONE OF THE MOST RESPECTED ARCHITECTS WORKING IN THE SOUTH FLORIDA REGION TODAY. BEST KNOWN FOR HIS HIGHLY STRIKING MIAMI CONDOMINIUMS, THE SANTA MARIA, BRISTOL TOWERS AND PORTO VITA TOWERS, REVUELTA'S INNOVATIVE WORK CONTINUES WITH THE SLEEK, SPACIOUS DESIGN OF CIELO.

## INTERIOR DESIGNERS

**STEVEN G.** WITH GALLERIES IN FLORIDA AND NEW YORK, THE STEVEN G DESIGN TEAM BRINGS TALENT THROUGHOUT THE EASTERN SEABOARD, NATIONALLY AND INTERNATIONALLY. THE STEVEN G 75,000 SQ.FT MAIN HEADQUARTERS, LOCATED IN FLORIDA, IS A STATE OF THE ART SHOWROOM THAT WILL TAKE YOUR DESIGN FANTASIES TO A LEVEL BEYOND YOUR DREAMS. RECIPIENT OF NUMEROUS DESIGN AWARDS, OUR IN-HOUSE STAFF OF LICENSED INTERIOR DESIGNERS, LEED ACCREDITED PROFESSIONALS, TECHNICAL DESIGNERS AND DESIGN RENDERERS ARE WELL KNOWN FOR THEIR DESIGN EXPERTISE AND CREATIVE INTERIORS.







CIELO

7935 EAST DRIVE, HARBOR ISLAND, NORTH BAY VILLAGE, FL 33141

[WWW.CIELOONTHEBAY.COM](http://WWW.CIELOONTHEBAY.COM)

**HARBOR ISLAND - NORTH BAY VILLAGE | THIRTY-SIX EXCLUSIVE, BAY FRONT RESIDENCES**



ORAL REPRESENTATIONS CANNOT BE RELIED UPON AS CORRECTLY STATING REPRESENTATIONS OF THE DEVELOPER. FOR CORRECT REPRESENTATIONS, MAKE REFERENCE TO THIS BROCHURE AND TO THE DOCUMENTS REQUIRED BY SECTION 718.503, FLORIDA STATUTES, TO BE FURNISHED BY A DEVELOPER TO A BUYER OR LESSEE. NOT AN OFFER WHERE PROHIBITED BY STATE STATUTE. PRICES FEATURES, RENDERING DETAILS AND AMENITIES ARE SUBJECT TO CHANGE.