



ONE THOUSAND **MUSEUM**
BY ZAHA HADID ARCHITECTS



ONE THOUSAND MUSEUM MIAMI, FLORIDA

LOCATED ON A COVETED PROPERTY OVERLOOKING MIAMI'S MUSEUM PARK, AND BOASTING UTTERLY BREATHTAKING BISCAYNE BAY AND ATLANTIC OCEAN VIEWS, ONE THOUSAND MUSEUM APPEARS AS A CONTINUOUS PIECE OF CONTEMPORARY SCULPTURE FROM PODIUM TO CROWN.



A FUSION OF ART, ARCHITECTURE & DESIGN

IN THE LATTER DECADES OF HER LIFETIME, PRTIZKER PRIZE-WINNING ARCHITECT ZAHA HADID BECAME INTERNATIONALLY RENOWNED FOR HER DESIGNS OF SENSUOUS, SOARING BUILDINGS THAT PUSHED THE LIMITS OF INNOVATION AND BLURRED THE LINES BETWEEN ART AND ARCHITECTURE. ONE THOUSAND MUSEUM BY ZAHA HADID, MIAMI'S MOST PRESTIGIOUS NEW RESIDENTIAL TOWER, WAS HER FIRST RESIDENTIAL SKYSCRAPER IN THE WESTERN HEMISPHERE.

LOCATED ON A COVETED PROPERTY OVERLOOKING MIAMI'S MUSEUM PARK, AND BOASTING UTTERLY BREATHTAKING BISCAYNE BAY AND ATLANTIC OCEAN VIEWS, ONE THOUSAND MUSEUM BRINGS HADID'S VISIONARY ARCHITECTURE TOGETHER WITH AN UNPRECEDENTED LEVEL OF SERVICE AND EXTRAORDINARY AMENITIES. THE OWNERS OF THIS LIMITED COLLECTION OF MUSEUM-QUALITY DUPLEX TOWNHOMES, HALF-FLOOR RESIDENCES, FULL-FLOOR PENTHOUSES, AND A SINGLE DUPLEX PENTHOUSE WILL ENJOY EXCEPTIONAL PRIVACY WITHIN A TRULY SECURE STATE-OF-THE-ART ENVIRONMENT.

BREATHTAKING VIEWS OF BISCAYNE BAY AND THE ATLANTIC OCEAN FROM EVERY RESIDENCE



ARTIST'S CONCEPTION. REFER TO DISCLAIMER

A PRESTIGIOUS RESIDENTIAL TOWER SURROUNDED BY THE LIGHTS OF MIAMI

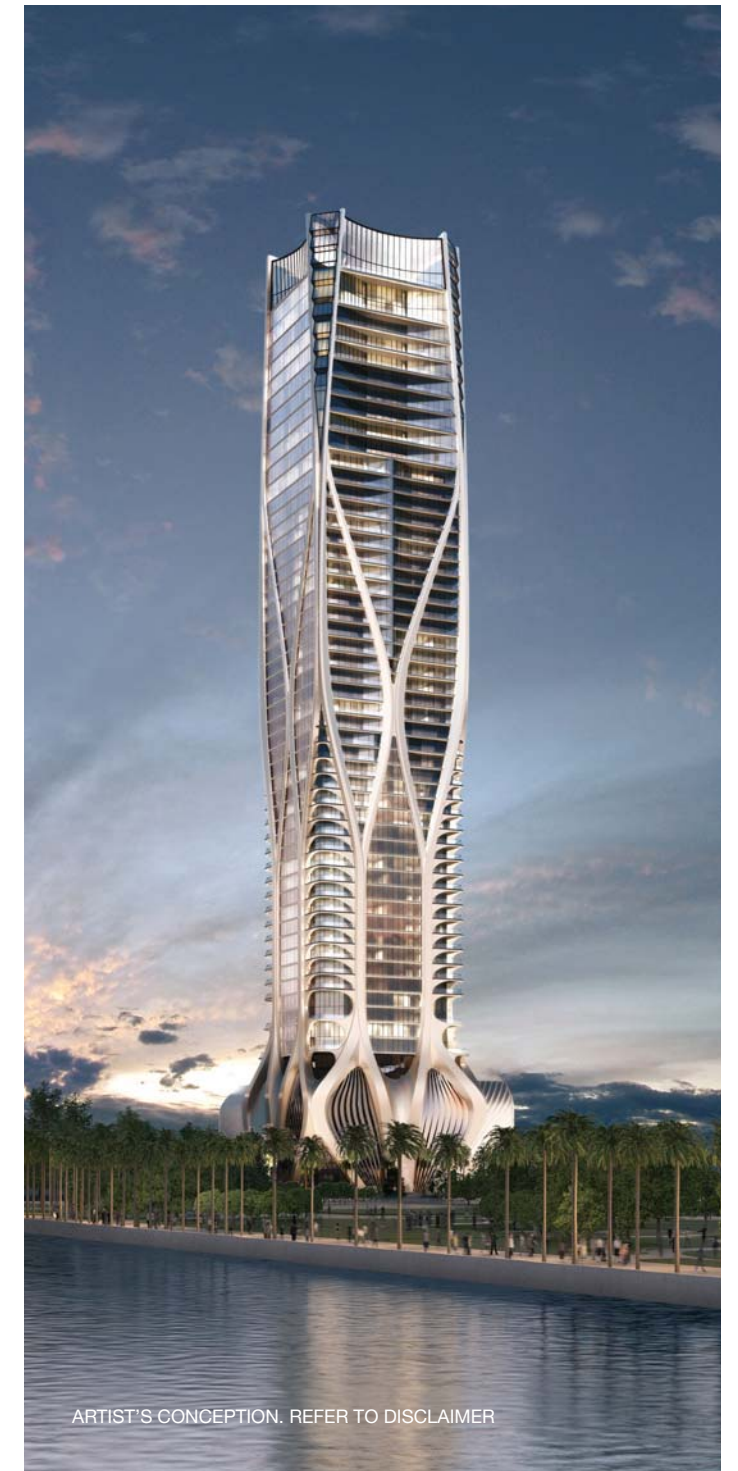


VISIONARY ARCHITECTURE FOR A PREMIER GLOBAL CITY

As Miami has transformed into a truly global city in recent years, it has become a prime location for the development of a world-class residential skyscraper that meets the expectations of clientele with sophisticated taste. Beyond a prominent location distinguished by unparalleled views and visibility, such a project demands an ambitious creative vision, one that offers private ownership of an iconic piece of architecture. One Thousand Museum is a celebration of excellence and innovation. It is a bold physical statement about the essence of Miami through the eyes of Dame Zaha Hadid.

This prestigious residential tower appears as a continuous piece of contemporary sculpture from the podium to the crown. The contrast between the robust exoskeleton and the crystalline glazing of the glass façade beneath it is one defining characteristic. The other defining characteristic is the integrity with which form follows function. The tower's fluid curves reflect its internal organization as it rises more than 60 stories from the arrival podium to the amenity levels, the residential floors above, and finally to a dramatic double-height amenity space at the crown.

Shadows cast by the white exoskeleton on the recessed glass façade emphasize the interplay between the verticality of the tower and the horizontal lines of balconies. At the uppermost levels, where full-floor penthouses and the crown amenity space are located, a split at each corner of the tower reveals folded glass elements. In sunlight, reflections along the corner glazing give the appearance of finely cut jewels set precisely within the tower architecture.



ARTIST'S CONCEPTION. REFER TO DISCLAIMER

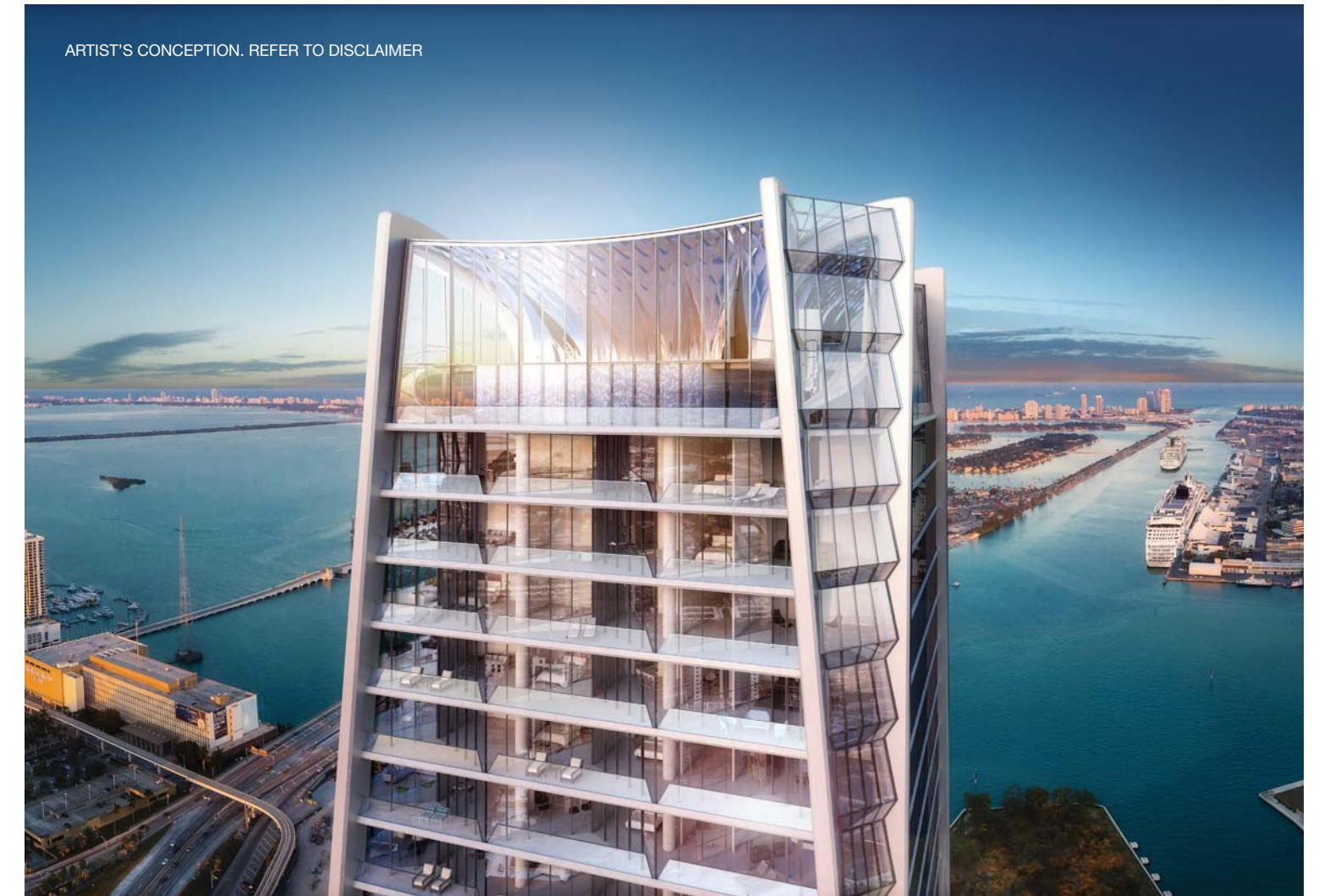
ARTIST'S CONCEPTION. REFER TO DISCLAIMER



ARTIST'S CONCEPTION. REFER TO DISCLAIMER



THE CONTRAST BETWEEN THE SENSUOUS CURVES OF THE EXOSKELETON AND THE CRYSTALLINE GLAZING OF THE FAÇADE IS ONE OF THE DEFINING CHARACTERISTICS OF ONE THOUSAND MUSEUM. IT IS AN AUDACIOUS EXPRESSION OF ARCHITECTURAL INNOVATION AT THE CENTER OF THE MIAMI SKYLINE.



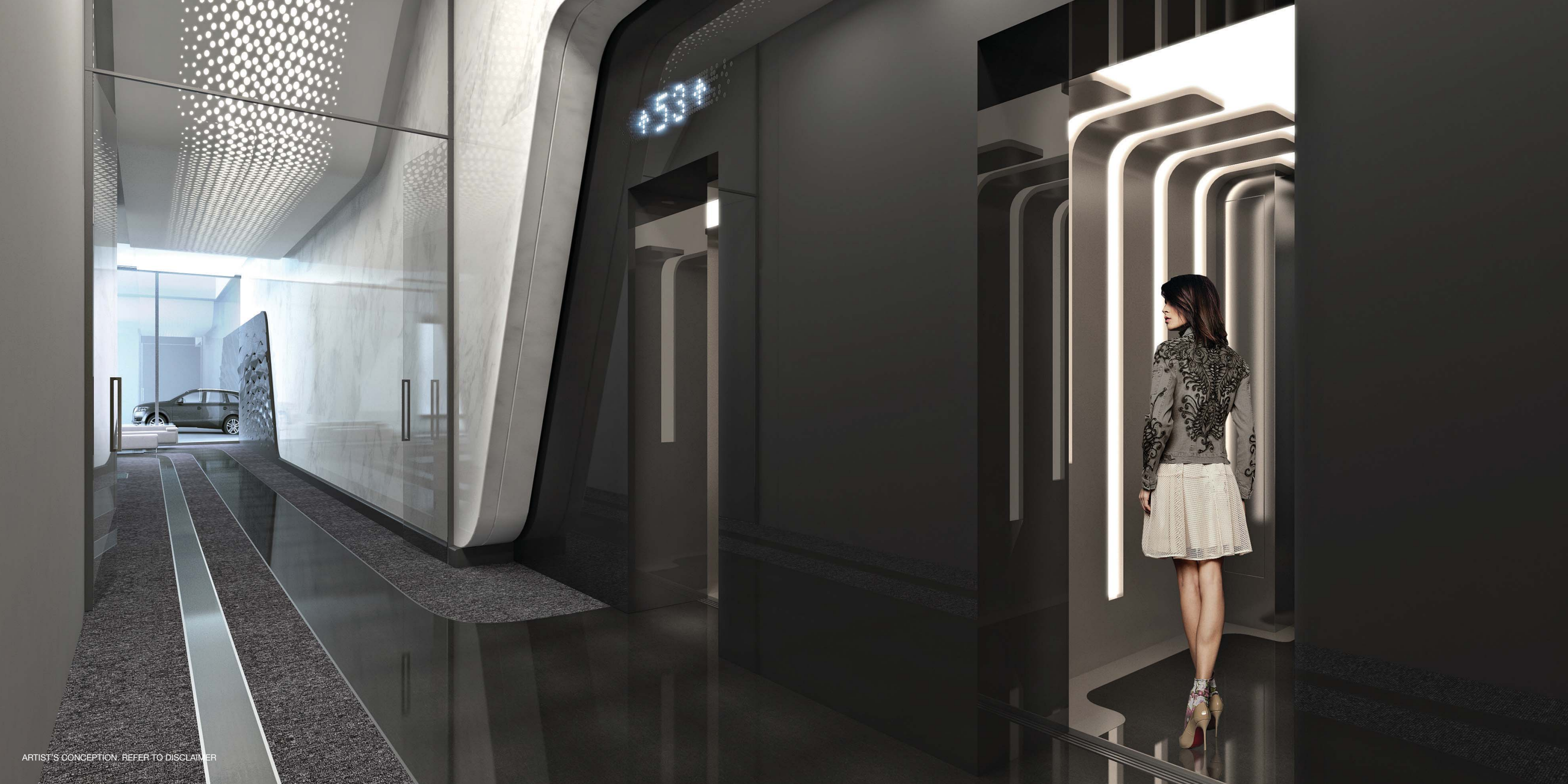
MINUTES FROM SOUTH BEACH AND BRICKELL, MIAMI'S MOST PRESTIGIOUS NEW RESIDENTIAL ADDRESS

Internationally acclaimed for its cutting-edge contemporary art scene, chic nightlife, tropical beaches, and year-round temperate weather, Miami has in recent years also become home to a number of the United States' most prestigious cultural institutions and most exciting entertainment venues. One Thousand Museum sits at the nexus of all of these desirable destinations just minutes from South Beach and the Brickell financial district. In coming years, the immediate neighborhood will continue to transform and become even more compelling as a result of over \$10 billion of investments in premier retail, hospitality, and entertainment developments nearby.



SIX STAR ARRIVAL EXPERIENCE

One Thousand Museum offers the atmosphere of an exclusive private club combined with the personalized services of a luxury boutique hotel. A dramatic porte cochère within the podium provides privacy from the street and a grand sense of arrival in tune with the prestige of the tower. The parking valet and doorman attend to residents' cars and packages, and the concierge is available to address owners' requests. Private residences are accessed from the lobby via secure, high-speed elevators that feature destination-entry smart technology.





CUSTOM SCENTING BY 12.29

Adding to the elegant contemporary ambience, all interior amenity spaces, including the lobby, Wellness & Spa levels, Aquatic Center, and Sky Lounge, are lightly perfumed with signature scents designed by 12.29 olfactory consultants. These subtle ambient scents are inspired by Zaha Hadid's architectural vision as well as the lifestyle in Miami's most prestigious new residential tower. Upon request, residences can be scented with one of these custom scents or a unique new scent can be created by 12.29.*

*Residential scenting is available at an additional fee.

MUSEUM-QUALITY DESIGN

The sculptural design of One Thousand Museum's podium beautifully complements the two recently completed museums located in the adjacent Museum Park. The sculpted corner of the podium creates a dramatic entry to the commercial space fronting the adjacent park, making it ideally suited for a fine dining restaurant, high-end boutique, art gallery, or exhibition venue.





INDOOR-OUTDOOR WELLNESS & SPA LEVELS

Above the podium, the Wellness and Spa amenities occupy two levels of light-filled space overlooking and opening onto the Sun & Swim Terrace. The spacious fitness center occupies the eastern half of the tower and offers dedicated indoor areas for movement training and stretching as well as a landscaped outdoor area for other fitness activities. At the second level, the Spa has been designed with private treatment rooms and a relaxation lounge. Light bites and refreshments are served at a casual snack bar overlooking the terrace.

FITNESS

Set within a double-height space overlooking Biscayne Bay, the fitness center has been designed with a dramatic curved ceiling crafted from European oak and impact-resistant flooring. Distinct rooms are dedicated to cardio, strength training, and free-weights. In addition, a flexible studio space is adaptable for spin classes, yoga, and group fitness. Equipment by Techno-Gym features on-demand video.





ARTIST'S CONCEPTION. REFER TO DISCLAIMER



ARTIST'S CONCEPTION. REFER TO DISCLAIMER

SPA

The spa level offers a full floor of indoor and outdoor areas dedicated to beauty, relaxation, and wellbeing. Two treatment rooms - one for couples, and the other for individuals - are available for spa therapies that can be arranged through the concierge. Hair and beauty styling services are also provided upon request in the salon.

STEAM, SAUNA & RAIN SHOWER

A rain experience shower is set between spacious steam and sauna rooms, which are crafted with European oak walls, ceilings, and floors. Wet area floors are clad in Vene Grigio marble. Just outside the wet rooms, a relaxation space overlooking the Sun & Swim Terrace is furnished with comfortable lounge chairs.



SCULPTURAL SUN & SWIM TERRACE

The roots of One Thousand Museum's distinctive exoskeleton surround residents with Zaha Hadid's visionary design and bring contemporary art into the personal sphere on the Sun & Swim Terrace. These sculptural extensions of the tower architecture create areas of light and shadow that move around organically shaped pools throughout the day. Residents can relax on lounge chairs or in cabanas with day beds. Poolside towel service is provided.



LANDSCAPE DESIGN BY ENZO ENEA

One Thousand Museum's extensive Sun & Swim Terrace and the terraces surrounding the Wellness & Spa level feature elegant landscaping by renowned Swiss landscape architect Enzo Enea. Created as a series of outdoor rooms that reflect the curvilinear form of the tower architecture, the terraces offer beautifully articulated private spaces for relaxation and socializing.

DOUBLE-HEIGHT AQUATIC CENTER

Within the crown of One Thousand Museum, the Aquatic Center offers an innovative infinity-edge pool. Zaha Hadid Architects' water drop pattern enhances the sculptural quality of arched interior walls and the double-height glass façade elevates the experience of spectacular panoramic views over Biscayne Bay, the Atlantic Ocean, and the Miami skyline.





TRIPLE-HEIGHT SKY LOUNGE

The Sky Lounge, also featuring Hadid's arched water drop pattern interior walls, provides a dramatic venue for private affairs. In addition to this triple-height event space overlooking the Biscayne Bay and Miami beach, there is a magnificent private dining room and a multimedia theater for movie screenings, lectures, and presentations.





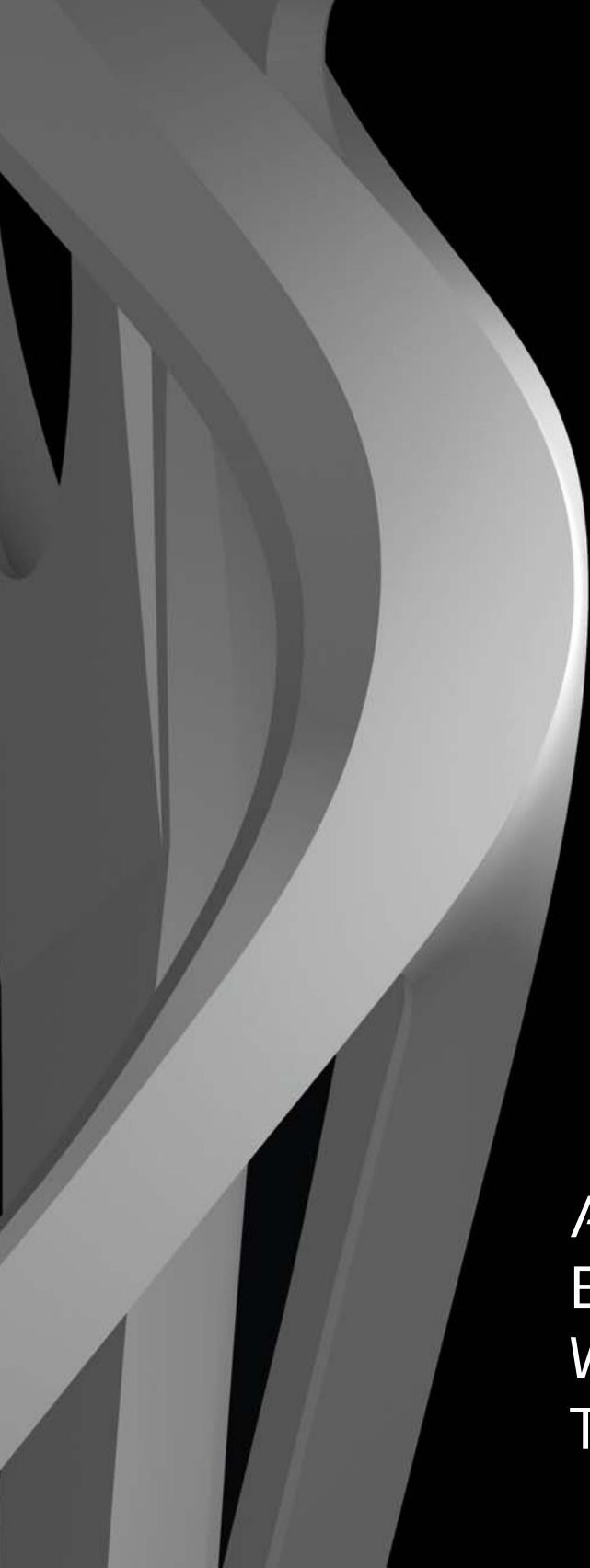
PRIVATE ROOFTOP HELIPAD

One Thousand Museum has been designed to offer Miami's first private helipad on a residential tower, providing residents with the convenience of arriving and departing securely on their own schedule. Residents can await their helicopter in the heli-lounge at the Aquatic Center level and watch its arrival on closed-circuit TV. One Thousand Museum's security staff escort residents between the heli-lounge and landing pad. Upon completion of all FAA certifications and regulatory requirements, the helipad will make nearby islands, private and commercial airports, and private yachts truly accessible at any time of the day or night.

DESIGNED TO BE MIAMI'S MOST SECURE RESIDENTIAL TOWER



With a limited number of expansive residences, One Thousand Museum is uniquely positioned to offer a truly secure living environment. The building has been designed with a functionally integrated security program focused not just on residents, but also their guests and their personal property. A world-leading security consulting firm has worked closely with the development team to address matters ranging from the structure of the building itself to sophisticated surveillance systems and appropriate staffing by specialized security personnel. Particular attention has been paid to achieving a secure environment without compromising the elegant nature of the property. A bank-quality vault contains an individual safe deposit box for every residence, offering residents the convenience of storing their valuables onsite.



**A LIMITED COLLECTION OF
EXTRAORDINARY RESIDENCES
WITH MAGNIFICENT PRIVATE
TERRACES**



One Thousand Museum's residences magnify the experience of breathtaking Biscayne Bay and Atlantic Ocean views as well as dynamic views of the Miami skyline. Living rooms, bedrooms and entertainment spaces have all been designed with East-to-West flow-through floor plans to capture this mesmerizing panorama. Oversized terraces extend living spaces outward into the fresh air and tropical sunlight. Museum-quality interiors have been crafted with the finest finishes and features by an elite team of designers, including lighting artists and residential technology specialists.

LIVING ROOM VIRTUALLY STYLED WITH
FURNISHINGS BY ZAHA HADID



LIVING ROOM VIRTUALLY STYLED WITH
CONTEMPORARY CLASSIC FURNISHINGS



LIVING ROOM STAGED WITH
TRANSITIONAL MODERN FURNISHINGS









ARTIST'S CONCEPTION. REFER TO DISCLAIMER



CUSTOM EUROPEAN KITCHENS

Spacious, minimalist kitchens feature the finest European style and high-performance European and American appliances. Residents have a choice of finishes for custom Italian design cabinetry by Poliform and will also be invited to select from a range of fine quartz countertops by Silestone. Induction cooktops, ovens, steam ovens, microwaves, dishwashers, and integrated coffee makers are by Gaggenau, and refrigerators are by Sub-Zero. Faucets and fixtures are by Dornbracht, Duravit, and MTI, among other superior quality brands.



ARTIST'S CONCEPTION. REFER TO DISCLAIMER

ELEGANT EUROPEAN BATHS

Tranquil bathrooms have been designed with spa-quality features and finishes. Custom European cabinetry and countertops are available in an array of fine materials and colors to accommodate owner preferences.

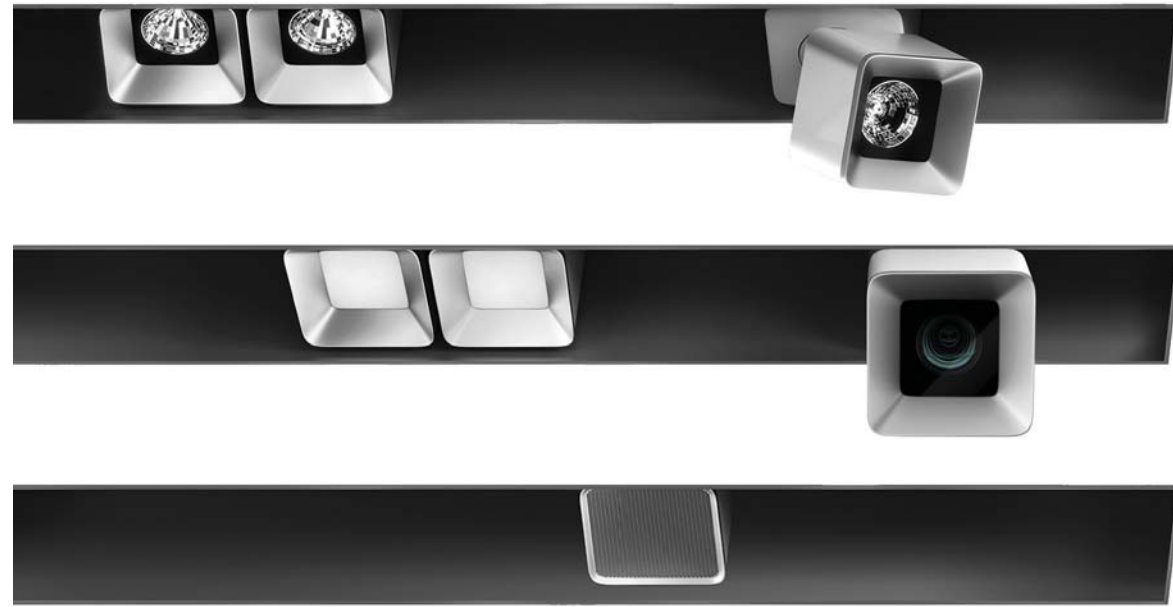


FINELY CRAFTED CLOSETS & INTERIOR DOORS

Residences feature custom Italian designed built-in and walk-in closets. Closet interiors have been crafted for superior functionality in the storage of clothing, accessories, and other household items.

Interior doors throughout the residences are by Lualdi Porte, a preeminent Italian furniture design firm. All doors have been customized with Valli & Valli's Duemilacinque Series handles designed by Zaha Hadid.





CUSTOM ILLUMINATED INTERIORS

Residential interiors feature illumination by premier European manufacturers customized by German industrial and interior designer Uli Petzold. Internationally renowned for his masterful lighting schemes for private residences as well as luxurious hospitality venues, Petzold focuses on creating dramatic tableaux that mimic the depth and dimensions of natural light.

Petzold's lighting design for One Thousand Museum features lighting fixtures by Apure that were created in collaboration with Porsche Design Studio. His design enables residents to achieve many aesthetic moods to emphasize the grand volumes of living and entertainment spaces, create intimacy in bedrooms or over a dining table, and sensitively highlight works of art put on display. A mix of diffused and targeted lighting throughout each residence creates texture and enhances the elegance of interior finishes and furnishings.

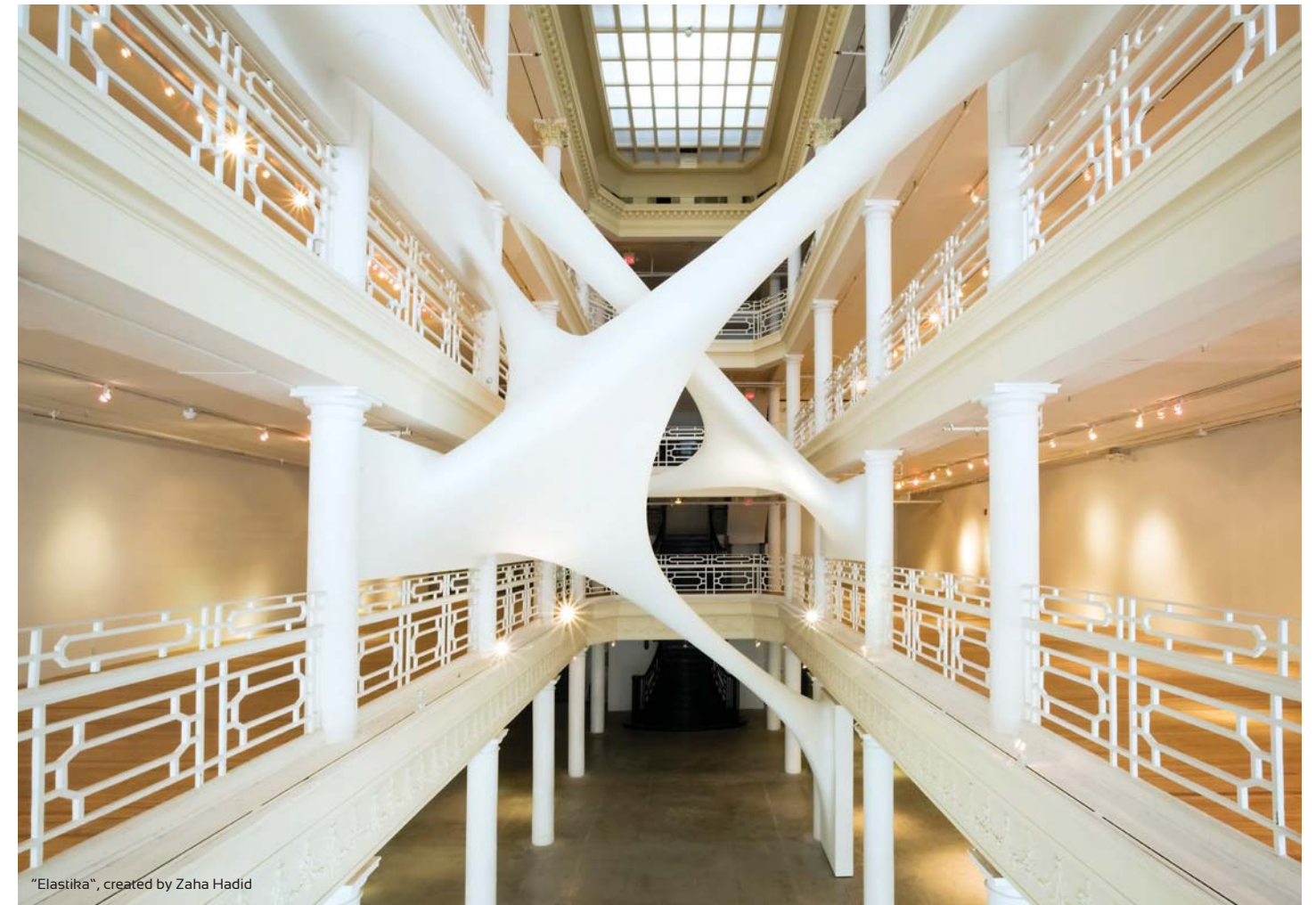


RESIDENTIAL TECHNOLOGY BY CRESTRON

Residents will enjoy extensive state-of-the-art home automation by Crestron, the world-leader in lifestyle technology. The fully customized integrated system enables residents to control a range of in-residence applications, including lighting, heating, air conditioning, audio, video, window treatments, and security.* All controls are accessible from a digital touch screen in the residence as well as remotely via smart tablet or smart phone devices.

*Some integrated systems require additional upgrades.

AN ORIGINAL WORK OF ART AT
THE NEXUS OF MIAMI'S MOST
INSPIRED DESTINATIONS



"Elastika", created by Zaha Hadid

One Thousand Museum is Miami's most anticipated new piece of contemporary art - an original architectural sculpture by Zaha Hadid at the center of one of the world's most exuberant lifestyle destinations. Adjacent to the newly designed Museum Park and steps from the Adrienne Arsht Center for the Performing Arts, it is a landmark within the growing pedestrian experience along Biscayne Boulevard. Just minutes away, residents will find a vast and appealing array of luxury shopping and fine dining destinations along with the corporate and financial services headquarters that make Miami an economic powerhouse.



ARTIST'S CONCEPTION. REFER TO DISCLAIMER

↑
↑
NORTH: TO FT. LAUDERDALE,
PALM BEACH

↑
↑
NORTH: TO BAY HARBOR,
AVENTURA



ONE THOUSAND MUSEUM
BY ZAHA HADID ARCHITECTS



DESIGN DISTRICT



WYNWOOD



ADRIENNE ARSHT CENTER
FOR THE PERFORMING ARTS



MUSEUM PARK



MIAMI SUPERYACHT
MARINA



NEW WORLD SYMPHONY



LINCOLN ROAD



SOUTH BEACH



MARLINS STADIUM



MIAMI WORLD CENTER



AMERICAN AIRLINES
ARENA



PORTMIAMI



BRICKELL FINANCIAL
DISTRICT



BRICKELL CITY CENTRE

JULIA TUTTLE CAUSEWAY



BISCAYNE BAY

VENETIAN CAUSEWAY & ISLANDS

ATLANTIC OCEAN

MID-BEACH

MACARTHUR CAUSEWAY



ALTON ROAD

COLLINS AVENUE



WEST: TO MIAMI
INTERNATIONAL AIRPORT

SOUTH: TO COCONUT GROVE,
KEY BISCAYNE, KEY WEST



SURROUNDED BY THE
FINEST ART, CULTURE,
DESIGN, ENTERTAINMENT,
AND COMMERCE



PEREZ ART MUSEUM MIAMI

Located in Museum Park in front of One Thousand Museum, the Pérez Art Museum Miami (PAMM) was designed by Pritzker Prize winning architecture firm Herzog & de Meuron to “bring the park into the museum” with transparent walls and innovative landscaping. This state-of-the-art facility, which opened in 2013, features an extensive collection of modern and contemporary international art.

PATRICIA & PHILLIP FROST MUSEUM OF SCIENCE

The Patricia and Phillip Frost Museum of Science opened its new location designed by Grimshaw Architects in Museum Park in 2017. This leading-edge museum incorporates a state-of-the-art planetarium, dazzling exhibitions on living ecosystems, the miraculous human body, outer space, the frontiers of technology, and a vast aquarium complex.



DBOX

MUSEUM PARK

Directly in front of One Thousand Museum, overlooking Biscayne Bay, the 30-acre Museum Park (previously known as Bicentennial Park) has undergone a comprehensive renovation in recent years. Its 30-acre expanse features a broad promenade from Biscayne Boulevard to the bay, and planned extensive new baywalk, a great lawn, paths shaded by massive oaks, and a sandy “beach” near the water’s edge.



ADRIENNE ARSHT CENTER FOR THE PERFORMING ARTS

Designed by internationally renowned architect César Pelli, the Adrienne Arsht Center for the Performing Arts is home to the Sanford and Dolores Ziff Ballet Opera House, the John S. and James L. Knight Concert Hall, and the List Art Collection. The Arsht Center stages performances of jazz, theater, opera, children’s shows, comedy, and contemporary dance.



AMERICAN AIRLINES ARENA

Located in Downtown Miami on the Biscayne Bay waterfront, the American Airlines Arena is one of the United States' premier sports and entertainment complexes. Designed by Arquitectonica and 360 Architecture, it is home to the National Basketball Association's Miami Heat and hosts concerts by musical superstars all year round.

PORTMIAMI

Adjacent to Biscayne Boulevard on Biscayne Bay in front of One Thousand Museum, PortMiami is known as "Cruise Capital of the World" and "Cargo Gateway of the Americas". Now undergoing a long-term public-private partnership redevelopment program, PortMiami is planning new cutting-edge facilities and infrastructure that will enable it to expand its capacity in the future.





MIAMI WORLD CENTER

Located behind One Thousand Museum, Miami Worldcenter is a 30-acre master planned community designed to offer a lively pedestrian experience with distinctive residential, retail, restaurant, entertainment, hospitality, and commercial office space districts. Now in development, this high-end destination will feature beautifully landscaped walkways where European style outdoor cafés are interspersed with shopping. Miami Worldcenter will offer 450,000 square feet of retail space and the new Marriott Marquis World Convention Center will have 1,800 hotel rooms and 600,000 square feet of convention space.



Proposed master plan



WYNWOOD ART DISTRICT

Founded in early 2003 by a group of art dealers, artists and curators, the Wynwood Art District today is home to over 70 art galleries, boutiques, cafés, and bars, and features one of the largest open-air street-art installations in the world. During the annual Art Basel Miami fair, Wynwood is the destination for the most youthful and energetic art exhibitions.

MIAMI DESIGN DISTRICT

The internationally renowned Miami Design District offers an eclectic array of luxury shopping boutiques such as A. Lange & Söhne, Burberry, Bvlgari, Cartier, Dior, Emilio Pucci, Fendi, Gucci, Giorgio Armani, Hermes, Louis Vuitton, Rolex, Tiffany & Co, Tom Ford, and Valentino, as well as other cutting-edge design stores and provocative art galleries. Beyond being an incubator for innovative fashion, design, and architecture, it also is home to a wide array of delicious casual dining establishments.



BRICKELL FINANCIAL DISTRICT

Brickell is one of the largest financial districts in the United States and is home to the largest concentration of international banks in the country. In addition, it is the location of prestigious corporate offices and law firms as well as a large number of foreign consulates. One of the fastest growing neighborhoods in Miami, it is also home to luxury residential high rises and hotels along with fine dining establishments.



BRICKELL CITY CENTRE

Located in the heart of the Brickell Financial District, Brickell City Centre is an all-new \$1 billion, 9-acre mixed-use development with 4.9 million square feet of office, residential, hotel, retail and entertainment space. Four levels of luxury, premium, and world-class dining and entertainment are interconnected over three city blocks and anchored by a 107,000 square foot Saks Fifth Avenue and luxury VIP Cinema Experience from CMX.

MIAMI'S MOST PRESTIGIOUS NEW
RESIDENTIAL TOWER CAPTURES THE
VIBRANCY OF WHAT HAS BECOME A
TRULY GLOBAL CITY



AN ORIGINAL WORK OF ART IN PROGRESS

Construction of One Thousand Museum began in 2015, just one year before the untimely death of Zaha Hadid. On April 6, 2016, a memorial service was held at the site in her honor. Hundreds of construction workers and the development team observed a moment of silence against the backdrop of the curvilinear structure that was among the last of her creations.

