

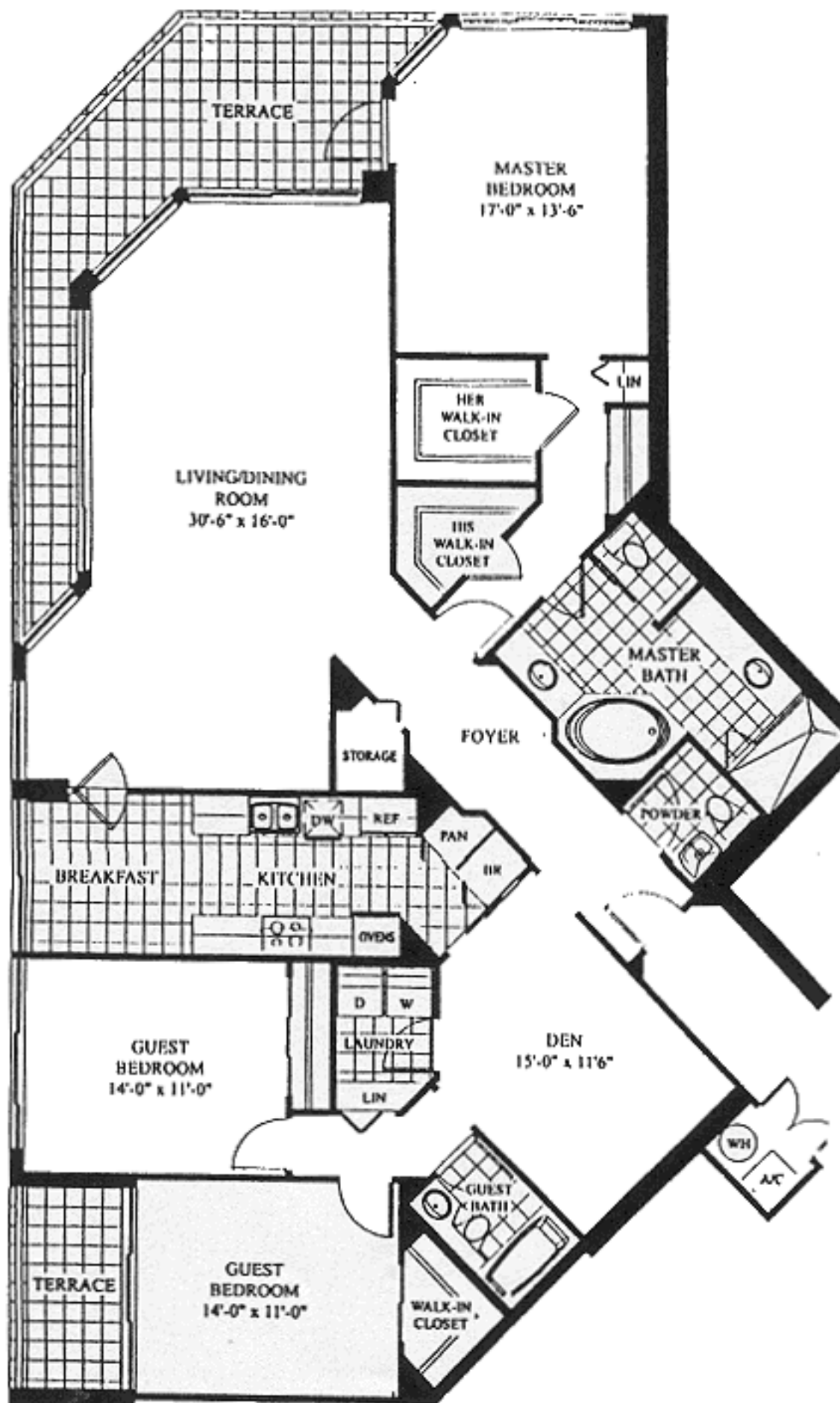
MILAN I



Do you want spectacular ocean views? This spacious three bedroom with den located on the NE corner of new luxury building provides you with 300 ft. of a spacious wrap around terrace overlooking the ocean and the elegant pool areas. Wake up in the morning sunrise and ocean everywhere. Choose this extraordinary lifestyle when you acquire your own exclusive piece of paradise.

3 Bedrooms & Den
2 1/2 Bathrooms

A/C Area: 2,212 s.f.
Terrace: 299 s.f.
Total: 2,511 s.f.



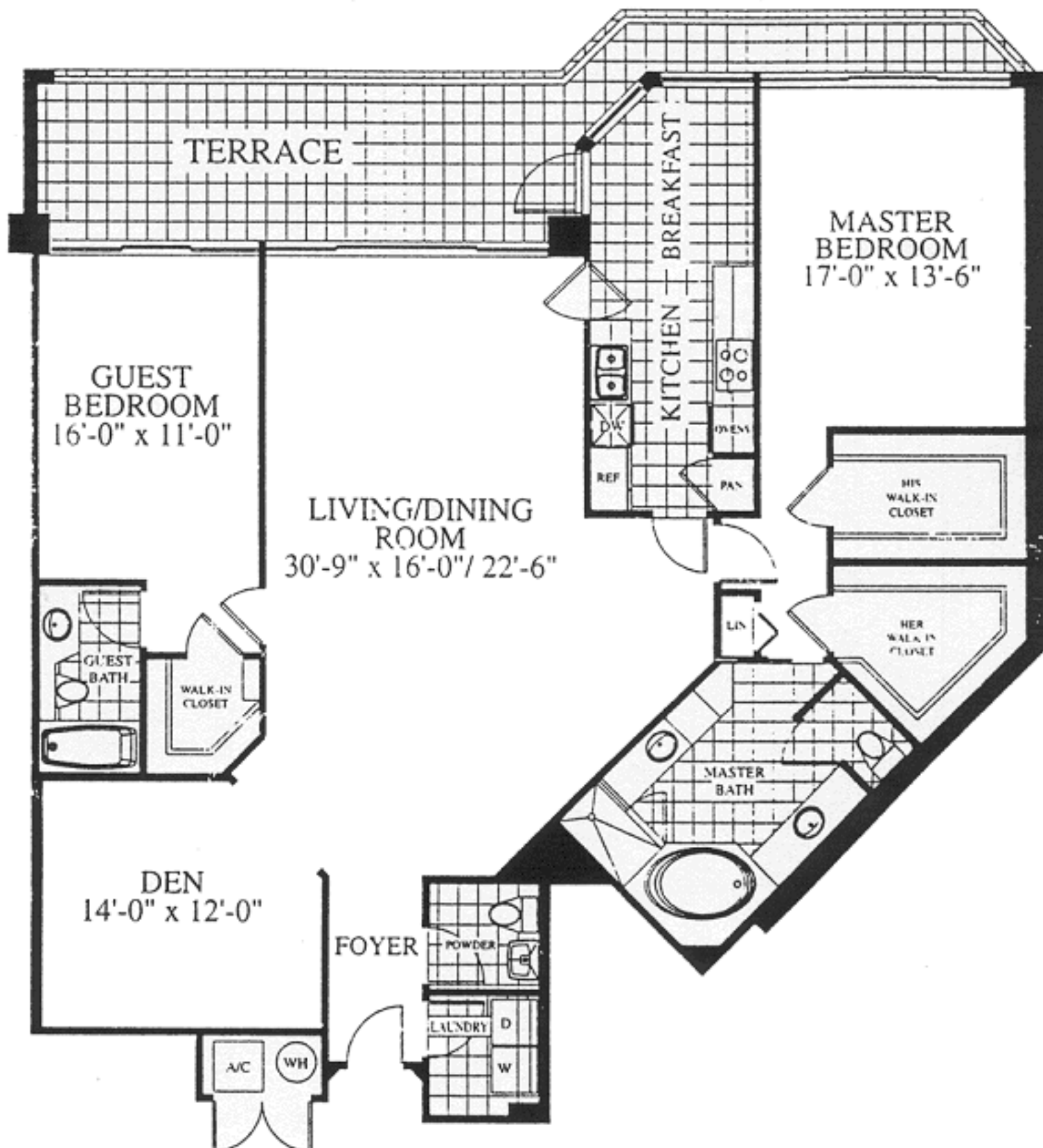
VERONA



Relaxing on the water with wide ocean views from all rooms. Away from it all yet, minutes to the Airport, Las Olas and Aventura. Must view this one of a kind.

2 Bedrooms & Den
2 1/2 Bathrooms

A/C Area: 1,978 s.f.
Terrace: 301 s.f.
Total: 2,279 s.f.



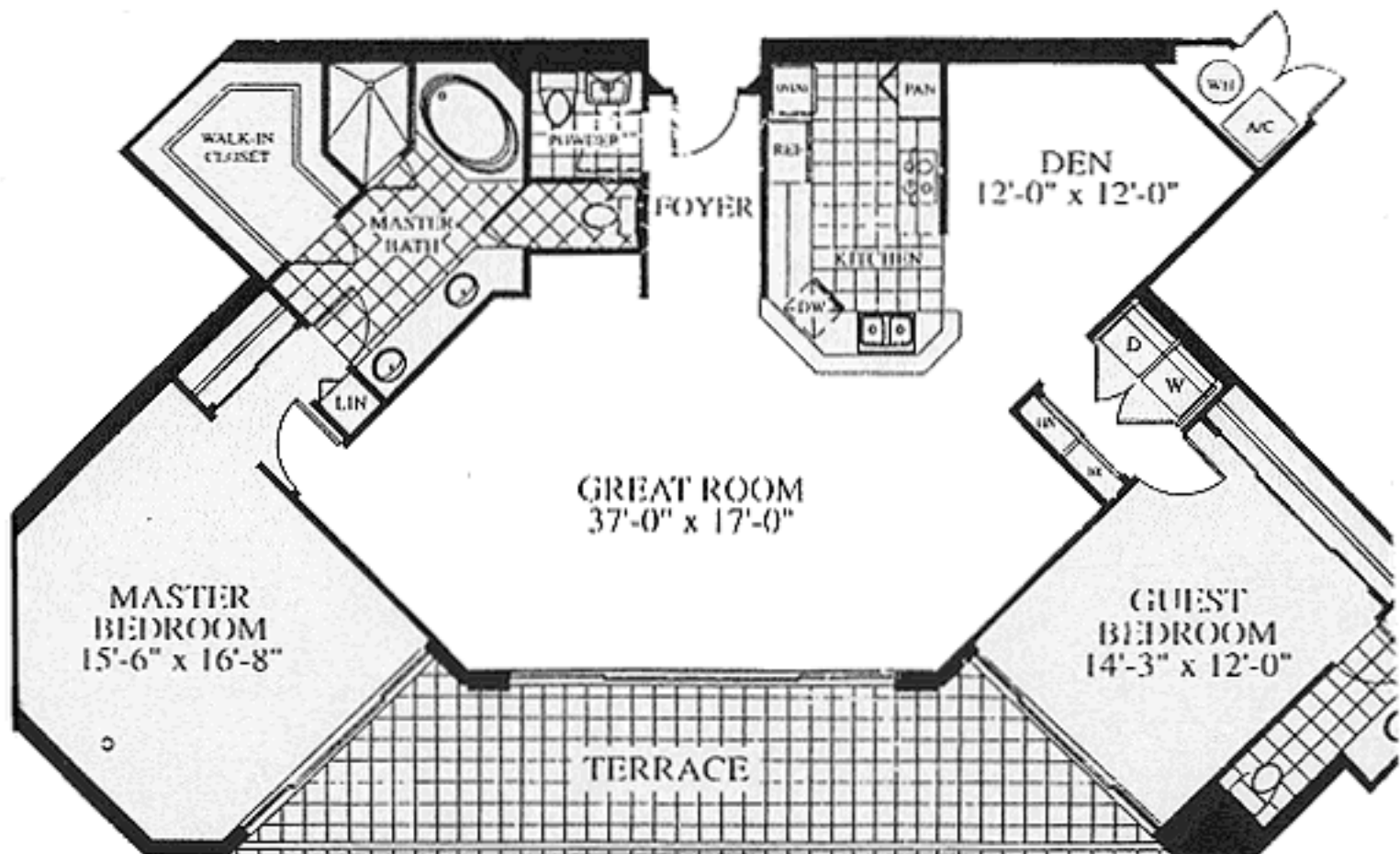
GENOA



Inviting and spectacular intracoastal and green nature preserves will be your view from every room. Just imagine sitting on your grand terrace of 283 feet and watching amazing sunsets. Open airy kitchen, spacious walk in closets in master bedroom and enormous open great room are just a few reasons you will want to make this your new home.

2 Bedrooms & Den
2 1/2 Bathrooms

A/C Area:	1,800 s.f.
Terrace:	283 s.f.
Total:	2,083 s.f.



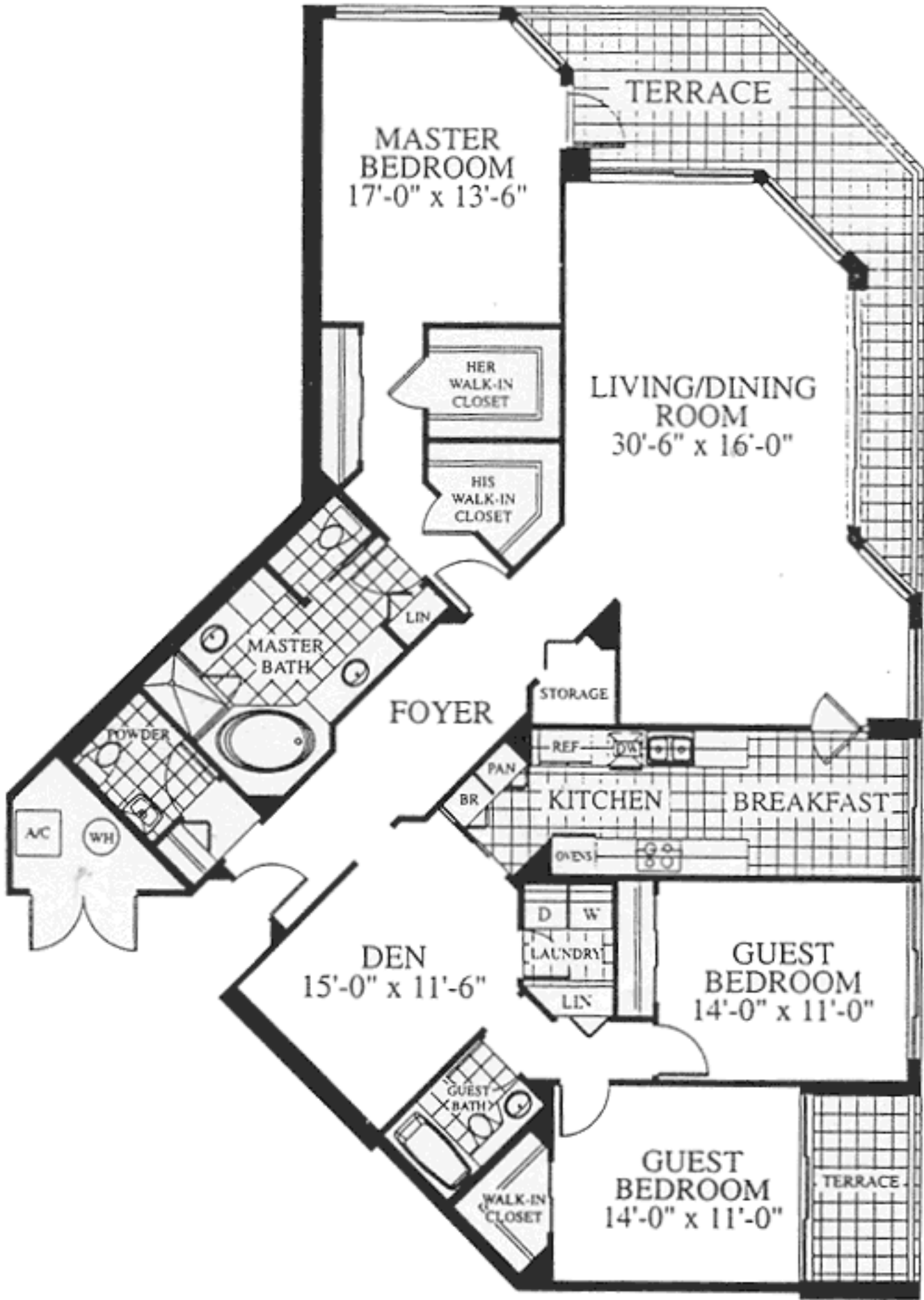
MILAN II



Sunrise/Sunset. With this view you can have them both. Located on the SE corner, breathtaking views, almost 300 sq. ft. of wraparound terrace. Even the guest bedrooms have their own balcony. The spacious 2,300 sq. ft., three bedroom home with a den will provide more than enough room for all your living and entertaining needs. Included in your new home are a breakfast area in the gourmet kitchen, marble master bath with Jacuzzi, spacious great room area and master bedroom looking directly on the ocean.

3 Bedrooms & Den
2 1/2 Bathrooms

A/C Area: 2,303 s.f.
Terrace: 299 s.f.
Total: 2,602 s.f.



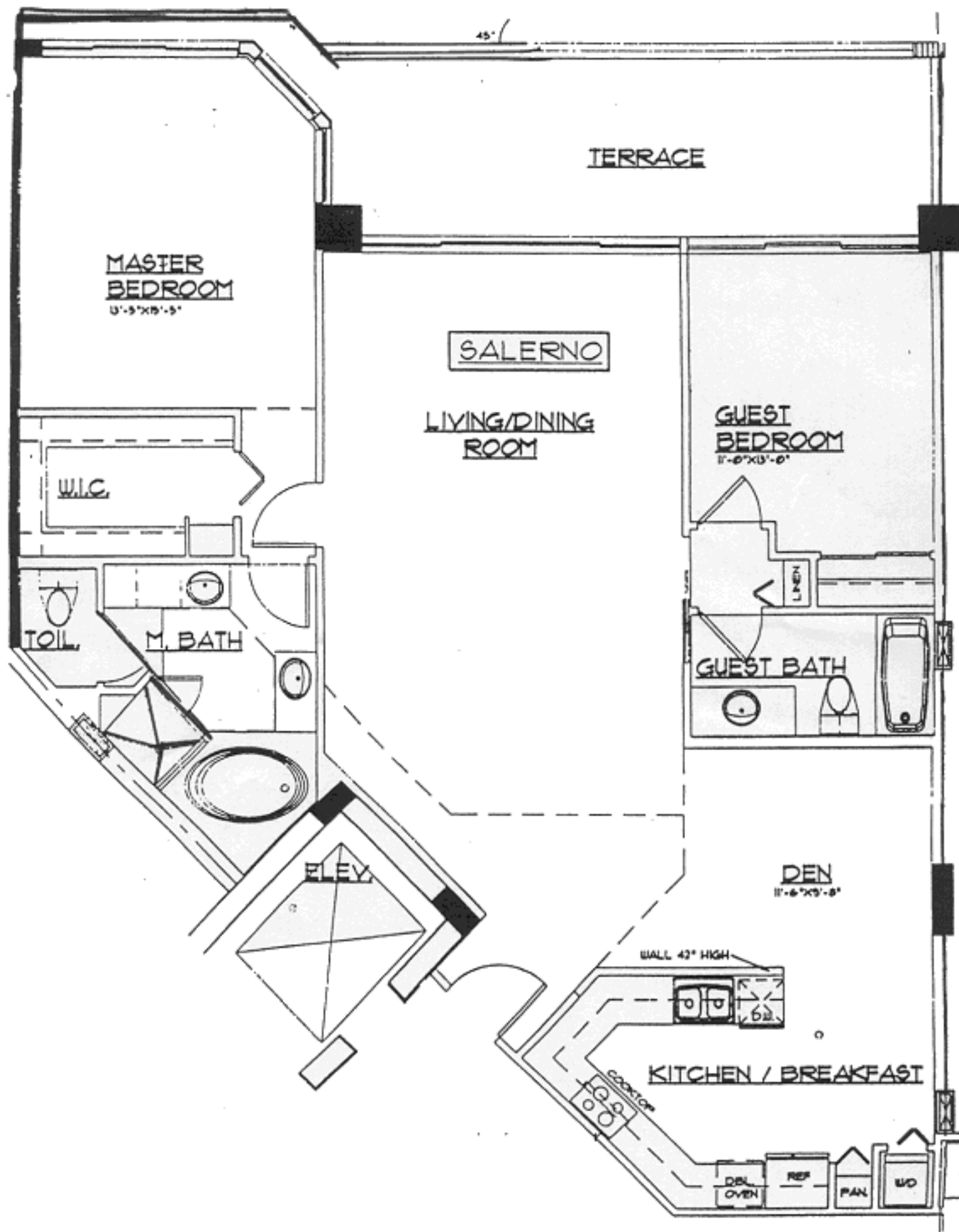
SALERNO



There are those of us who only want the best. Ocean everywhere from the masterpiece ocean residence with fine detailing and gourmet services.

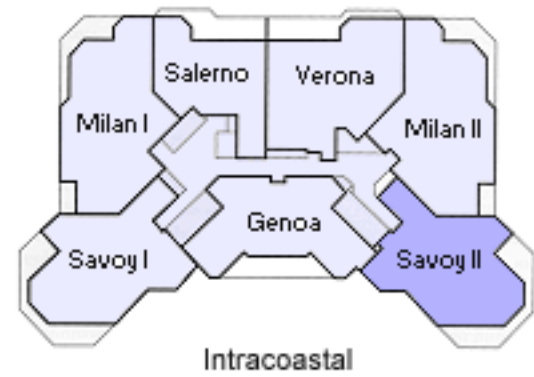
2 Bedrooms & Den
2 1/2 Bathrooms

A/C Area: 1,522 s.f.
Terrace: 301 s.f.
Total: 1,823 s.f.



SAVOY II

Atlantic Ocean Views

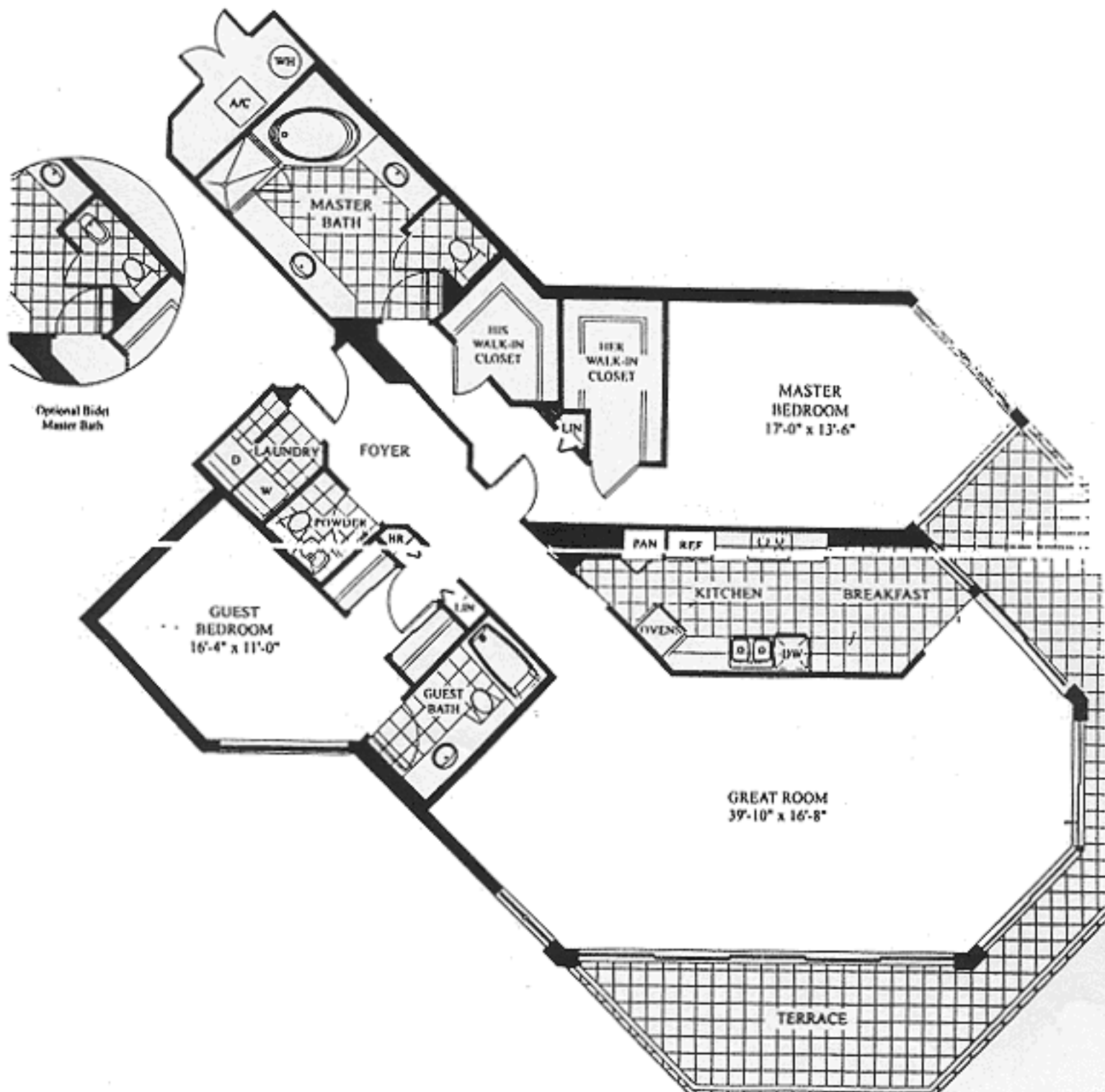


Intracoastal

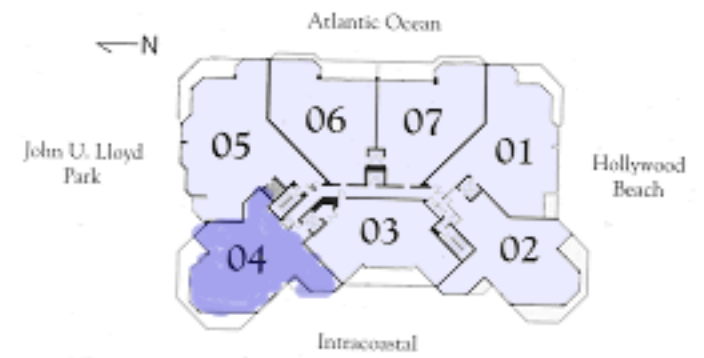
Panoramic unobstructed views are surrounded by 391 feet of circular terrace on the southwest corner. Have the sunrise, the sunset and pristine nature, ocean and Miami views. What more could you need in this private paradise.

2 Bedrooms & Den
2 1/2 Bathrooms

A/C Area: 2,012 s.f.
Terrace: 391 s.f.
Total: 2,403 s.f.



DA VINCI



This view is to die for! 2350 sq. ft., the largest circular two bedroom plus a den where you can see it all. From your spacious great room and dining are walls of glass and 420 feet of wrap around terrace will showcase the ocean, beach, intracoastal, park and nature preserve areas. Sunrises, sunsets - nothing is missing from this view.

2 Bedrooms & Den (or optional 3rd bedroom)

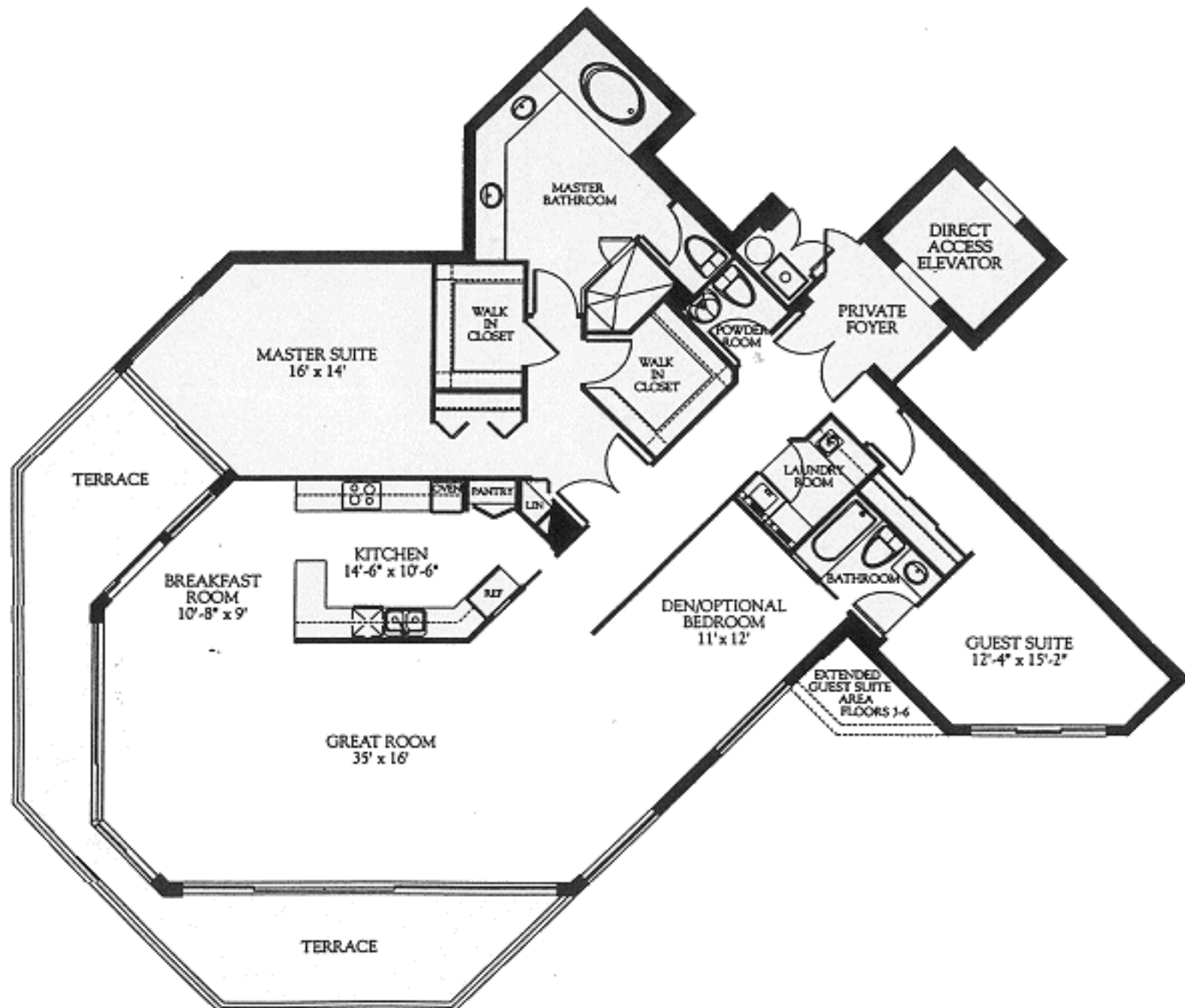
2 1/2 Bathrooms

304-1704 & PH4

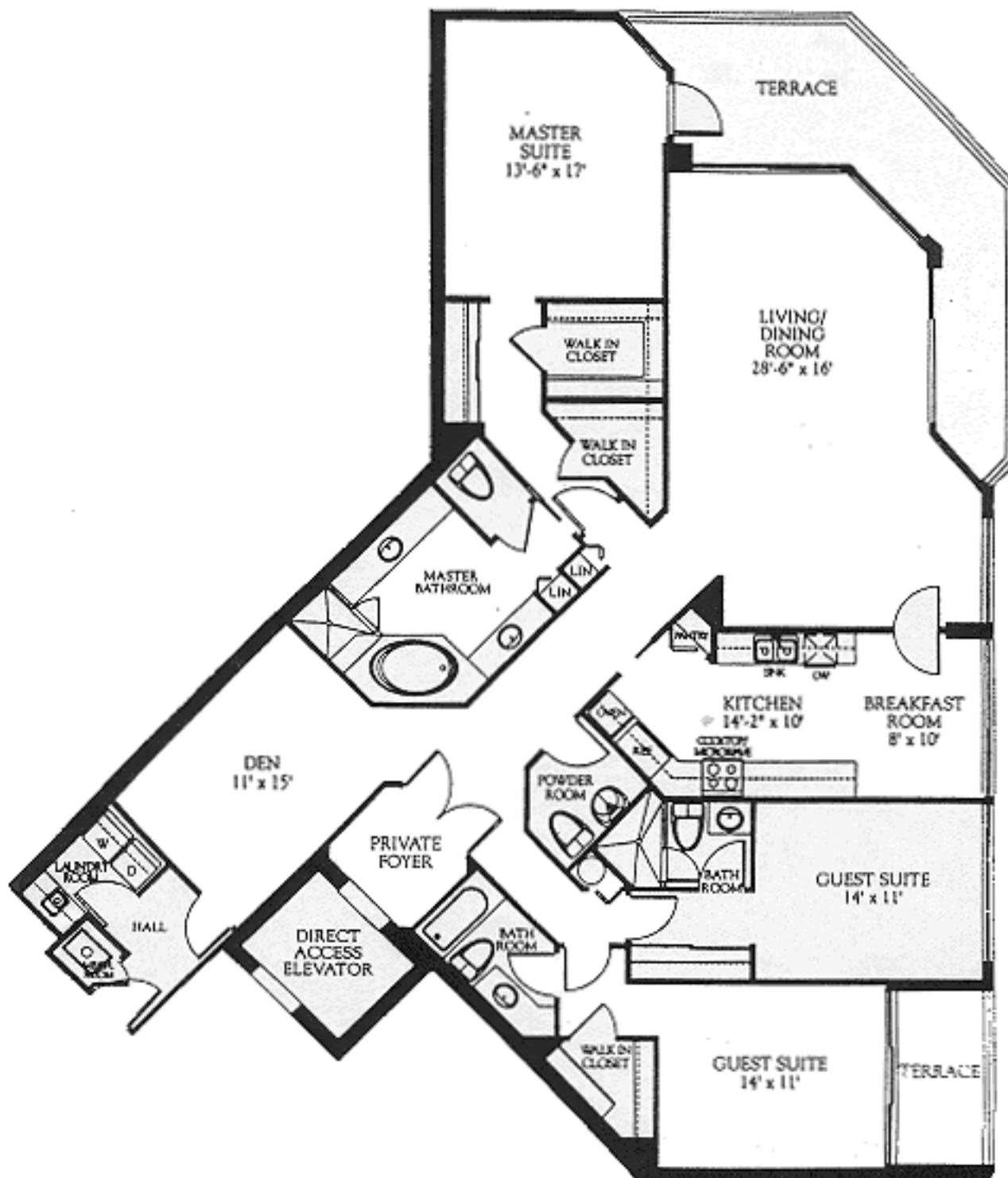
A/C Area: 2350 s.f. / 218 m2

Terrace: 420 s.f. / 39 m2

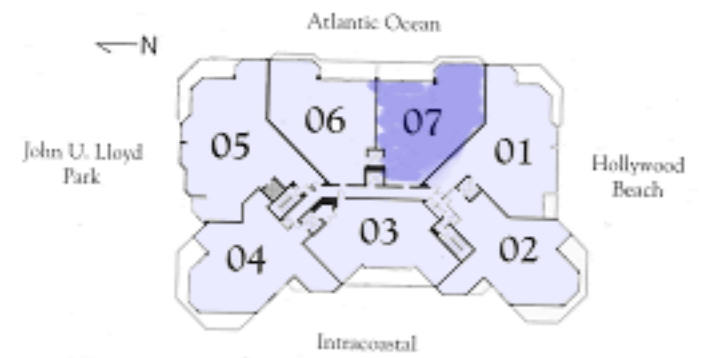
Total: 2770 s.f. / 257 m2



A/C Area: 2495 s.f. / 232 m2
Terrace: 315 s.f. / 29 m2
Total: 2810 s.f. / 261 m2



BOTTICELLI

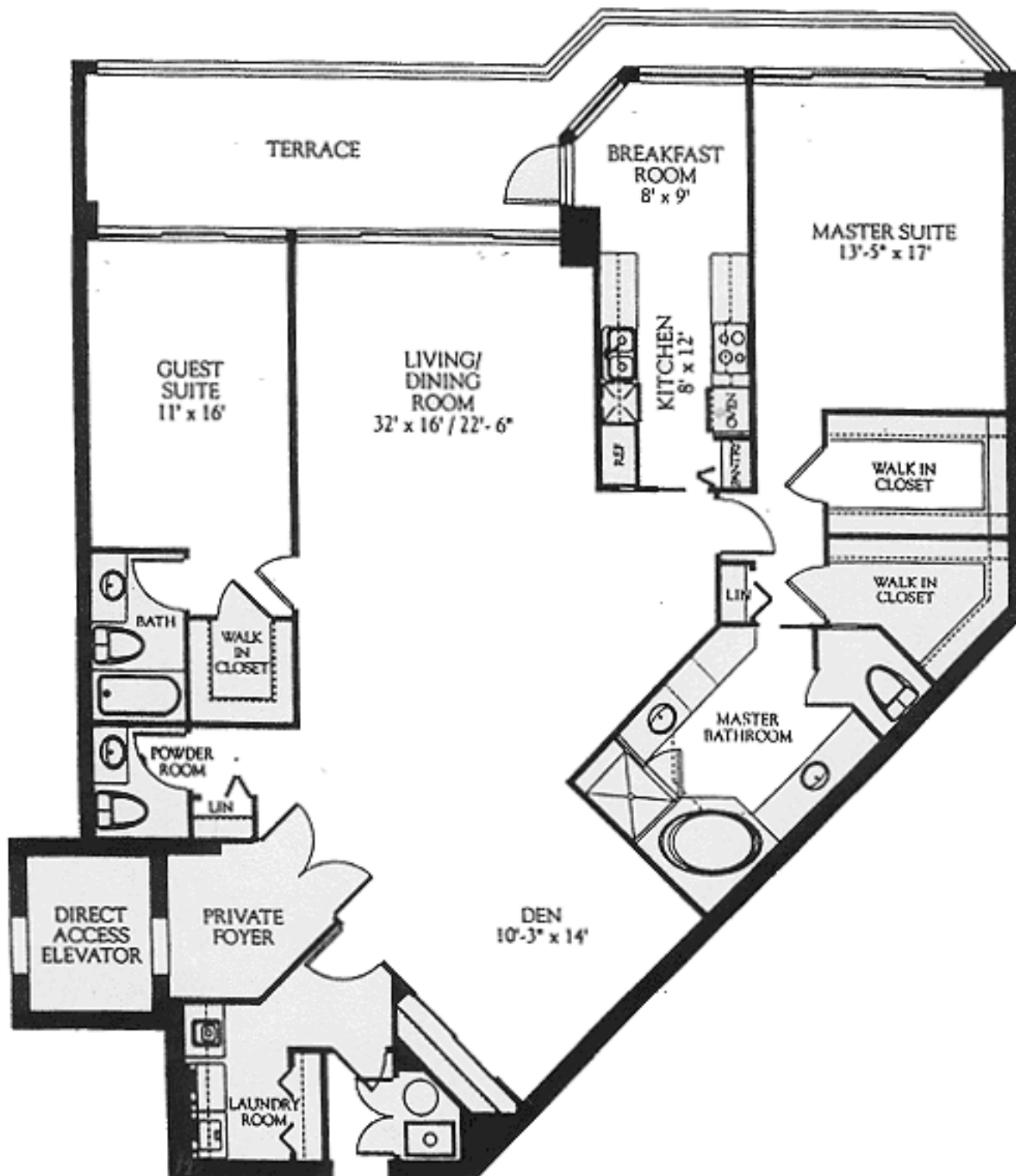


Fulfill your dreams. Ocean views from all rooms. Direct access elevator leads directly into your foyer and double security doors open to the stunning ocean views. 2180 sq. ft., 2 bedrooms, 2 1/2 baths, giant walk in closets, etc. Enjoy the luxury of the Botticelli.

2 Bedrooms & Den
2 1/2 Bathrooms

307-1707 & PH7
(306-1706 & PH6, mirror image)

A/C Area: 2180 s.f. / 202 m2
Terrace: 295 s.f. / 27 m2
Total: 2475 s.f. / 230 m2



MICHAELANGELO

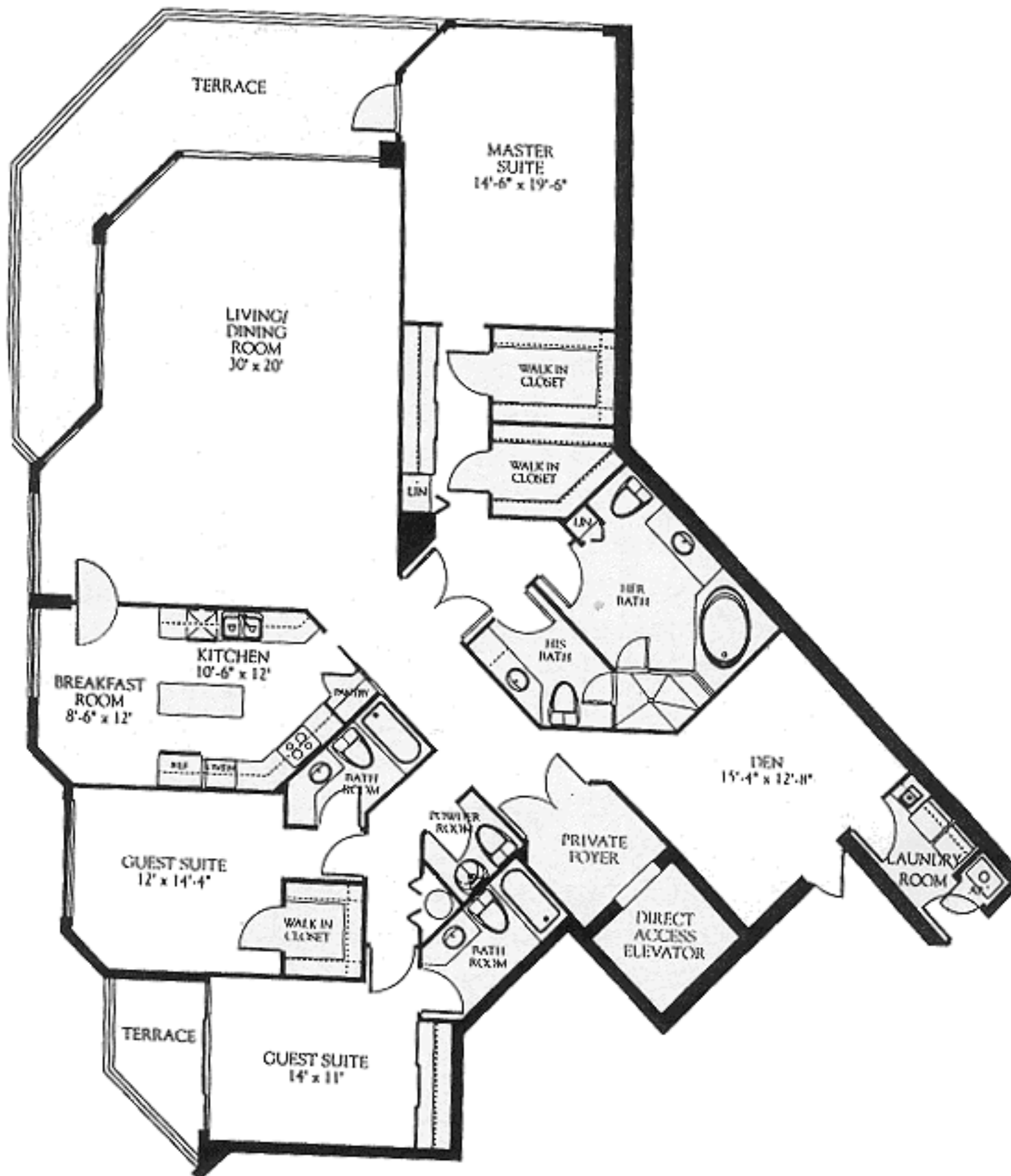


Deserve the best. The Michelangelo with 2,895 sq. ft. of spectacular ocean, intracoastal and city views. Private elevator leads directly into your own foyer and secure residence. The best includes granite counter tops, Jacuzzi tub and fabulous amenities. Before someone else walks away with the best one, see it for yourself.

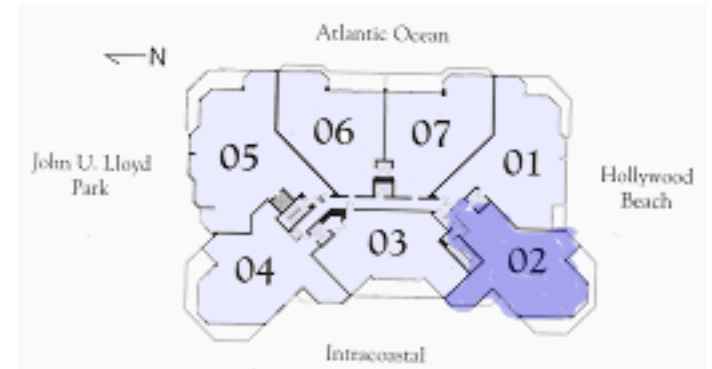
3 Bedrooms & Den
3 1/2 Bathrooms

305-1705

A/C Area: 2895 s.f. / 269 m2
Terrace: 390 s.f. / 36 m2
Total: 3285 s.f. / 305 m2



TITIAN

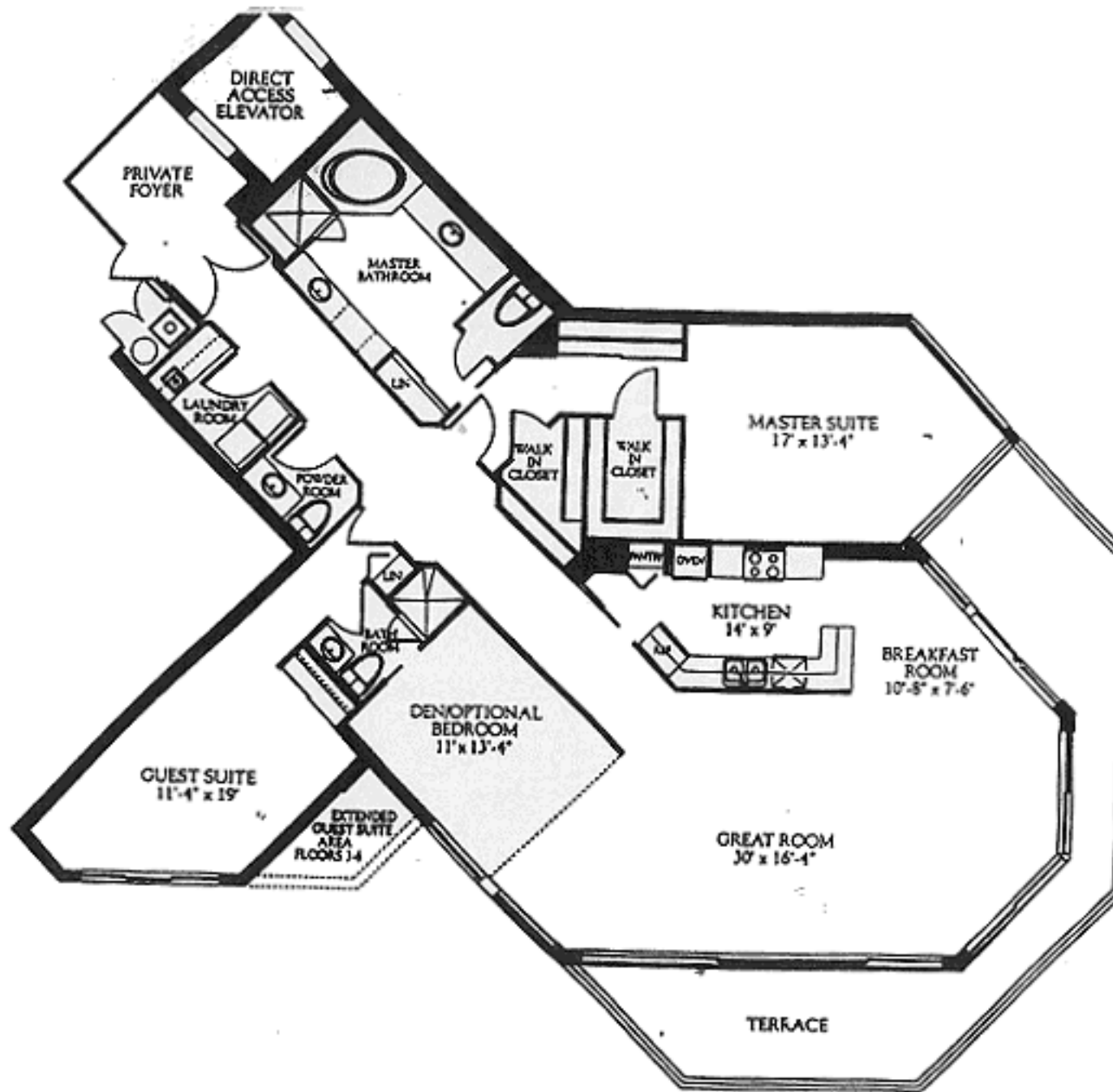


Elevator enters directly into the exquisite corner residence with wrap around terrace and wide open views of city and ocean from every window.

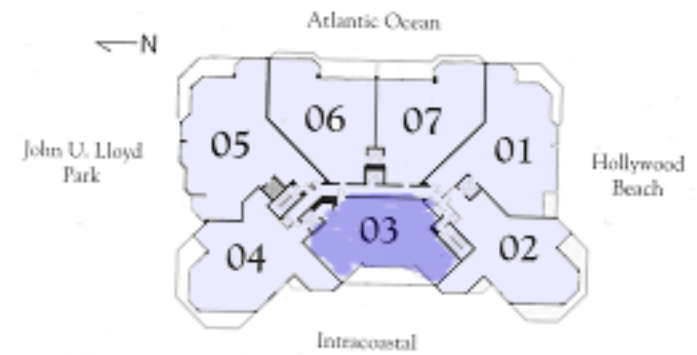
2 Bedrooms & Den (Or optional 3rd bedroom)
2 1/2 Bathrooms

302-1702 & PH2

A/C Area: 2275 s.f. / 211 m2
Terrace: 380 s.f. / 35 m2
Total: 2655 s.f. / 247 m2



EL GRECO

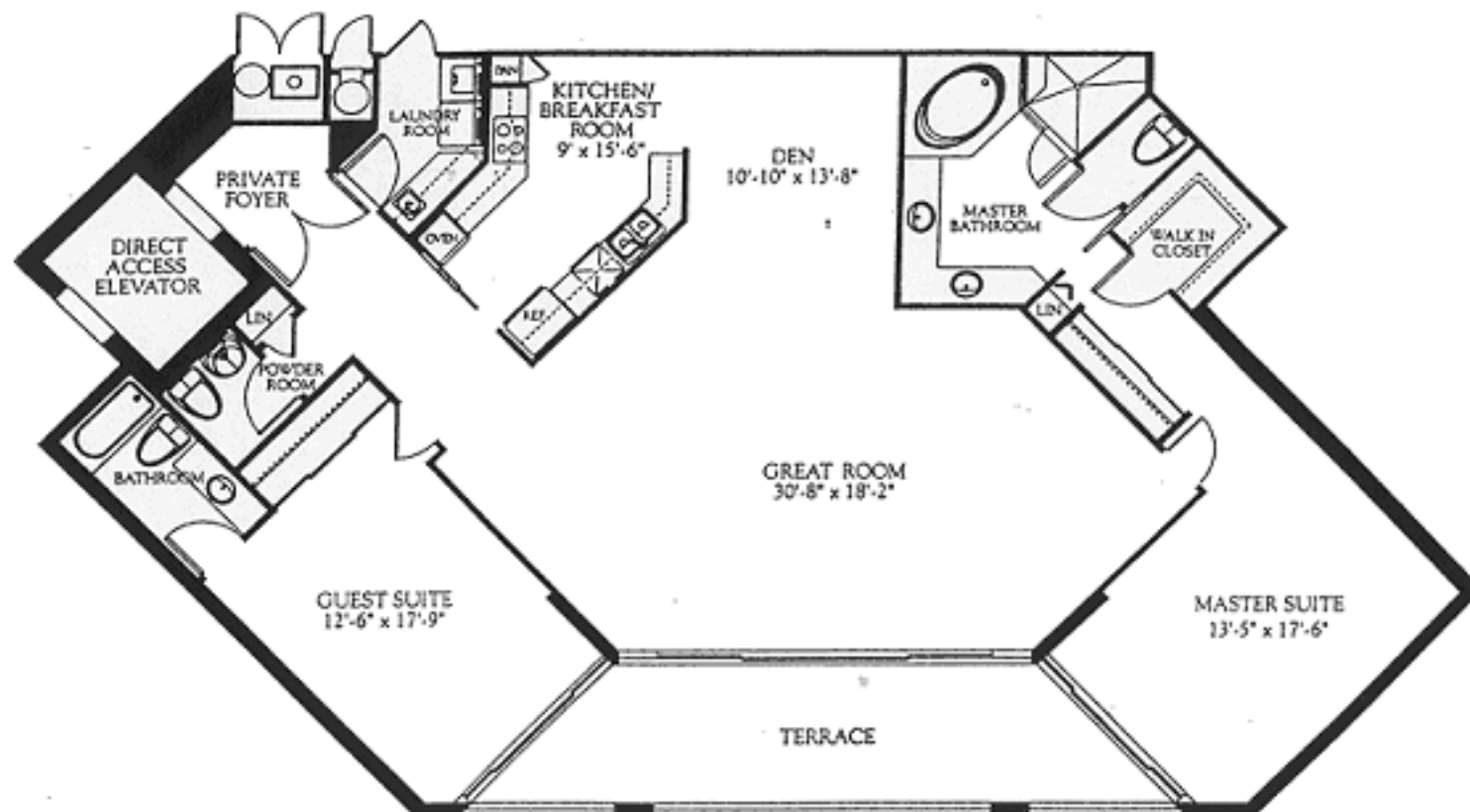


Spectacular forever views of nature preserve and intracoastal. Life at its best in the 30'8" x 18'2" great living room, large practical terrace, split bedroom floor plan.

2 Bedrooms & Den
2 1/2 Bathrooms

303-1703

A/C Area: 2075 s.f. / 192 m2
Terrace: 240 s.f. / 22 m2
Total: 2315 s.f. / 215 m2



SAVOY I



You will love the lifestyle. Spectacular circular terrace with 270 degree view of intracoastal, lush property landscaping, protected nature preserve, park, pool and tennis courts. 2 or 3 bedrooms, 2 1/2 bathrooms, open kitchen and floor to ceiling windows everywhere.

2 Bedrooms & Den
2 1/2 Bathrooms

A/C Area: 2,025 s.f.
Terrace: 391 s.f.
Total: 2,416 s.f.

