

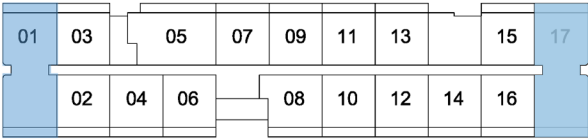
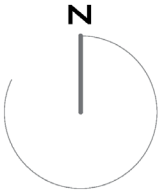
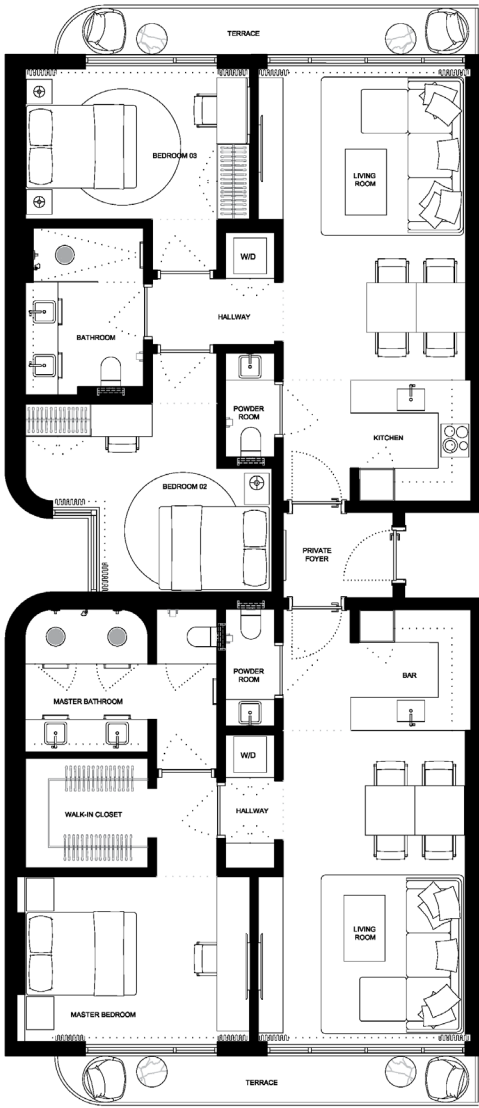
FLOORPLANS



UNITS 01 & 17

3 BED+2 BATH+  
2 1/2 BATH

INTERIOR 1 676sqft/155,7m2  
EXTERIOR 1 50sqft/13,9m2  
TOTAL 1 826sqft/169,6m2



These drawings are conceptual only and are for the convenience of reference. They should not be relied upon as representations, express or implied, of the final detail of the residences. Units shown are examples of unit types and may not depict actual units. Stated square footages are ranges for a particular unit type and are measured to the exterior boundaries of the exterior walls and the centerline of interior demising walls and in fact vary from the area that would be determined by using the description and definition of the unit set forth in the declaration (which generally only includes the interior airspace between the perimeter walls and excludes interior structural components). Note that measurements of rooms set forth on this floorplan are generally taken at the greatest points of each given room (as if the room were a perfect rectangle), without regards for any cutouts. Accordingly, the area of the actual room will typically be smaller than the product obtained by multiplying the stated length times width. All dimensions are approximate and may vary with actual construction, and all floor plans and development plans are subject to change.

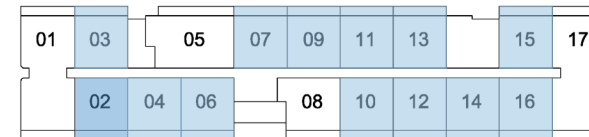
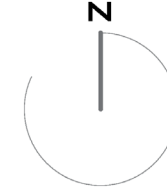
## FLOORPLANS

EDGEWATER MIAMI  
**VIDA**<sup>®</sup>  
RESIDENCES

UNITS 02, 03, 04, 06, 07, 09,  
10, 11, 12, 13, 14, 15 & 16.

**2 BED + 2 BATH**

INTERIOR 774SQFT/72M2  
EXTERIOR 84SQFT/7,7M2  
TOTAL 854SQFT/79,7M2



These drawings are conceptual only and are for the convenience of reference. They should not be relied upon as representations, express or implied, of the final detail of the residences. Units shown are examples of unit types and may not depict actual units. Stated square footages are ranges for a particular unit type and are measured to the exterior boundaries of the exterior walls and in fact vary from the area that would be determined by using the description and definition of the unit set forth in the declaration (which generally only includes the interior airspace between the perimeter walls and excludes interior structural components). Note that measurements of rooms set forth on this floorplan are generally taken at the greatest points of each given room (as if the room were a perfect rectangle), without regards for any cutouts. Accordingly, the area of the actual room will typically be smaller than the product obtained by multiplying the stated length times width. All dimensions are approximate and may vary with actual construction, and all floor plans and development plans are subject to change.

FLOORPLANS

EDGEWATER MIAMI

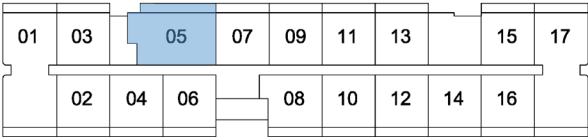
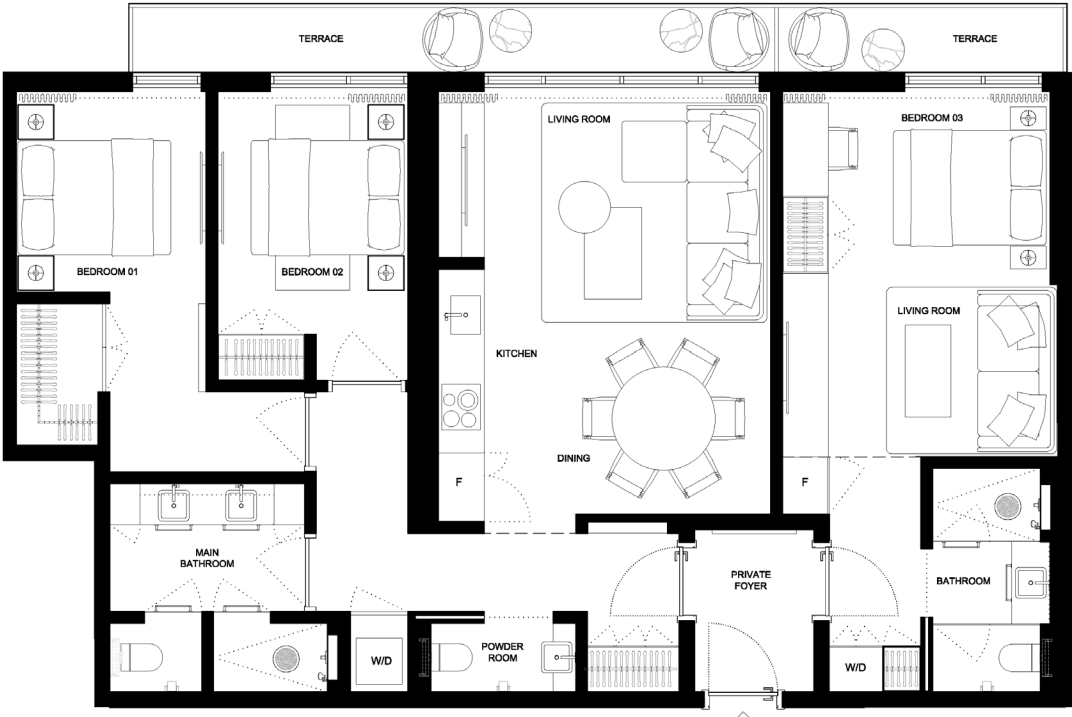
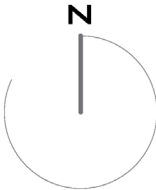
VIDA<sup>®</sup>

RESIDENCES

UNIT 05

3 BED+2 BATH+  
2 1/2BATH

INTERIOR 1 233sqft/114,6m2  
EXTERIOR 1 27sqft/11,8m2  
TOTAL 1 360sqft/126,4m2



URBANA BUENO

EDGEWATER MIAMI  
VIDA<sup>®</sup>  
RESIDENCES

urbana

These drawings are conceptual only and are for the convenience of reference. They should not be relied upon as representations, express or implied, of the final detail of the residences. Units shown are examples of unit types and may not depict actual units. Stated square footages are ranges for a particular unit type and are measured to the exterior boundaries of the exterior walls and the centerline of interior demising walls and in fact vary from the area that would be determined by using the description and definition of the unit set forth in the declaration (which generally only includes the interior airspace between the perimeter walls and excludes interior structural components). Note that measurements of rooms set forth on this floorplan are generally taken at the greatest points of each given room (as if the room were a perfect rectangle), without regards for any cutouts. Accordingly, the area of the actual room will typically be smaller than the product obtained by multiplying the stated length times width. All dimensions are approximate and may vary with actual construction, and all floor plans and development plans are subject to change.

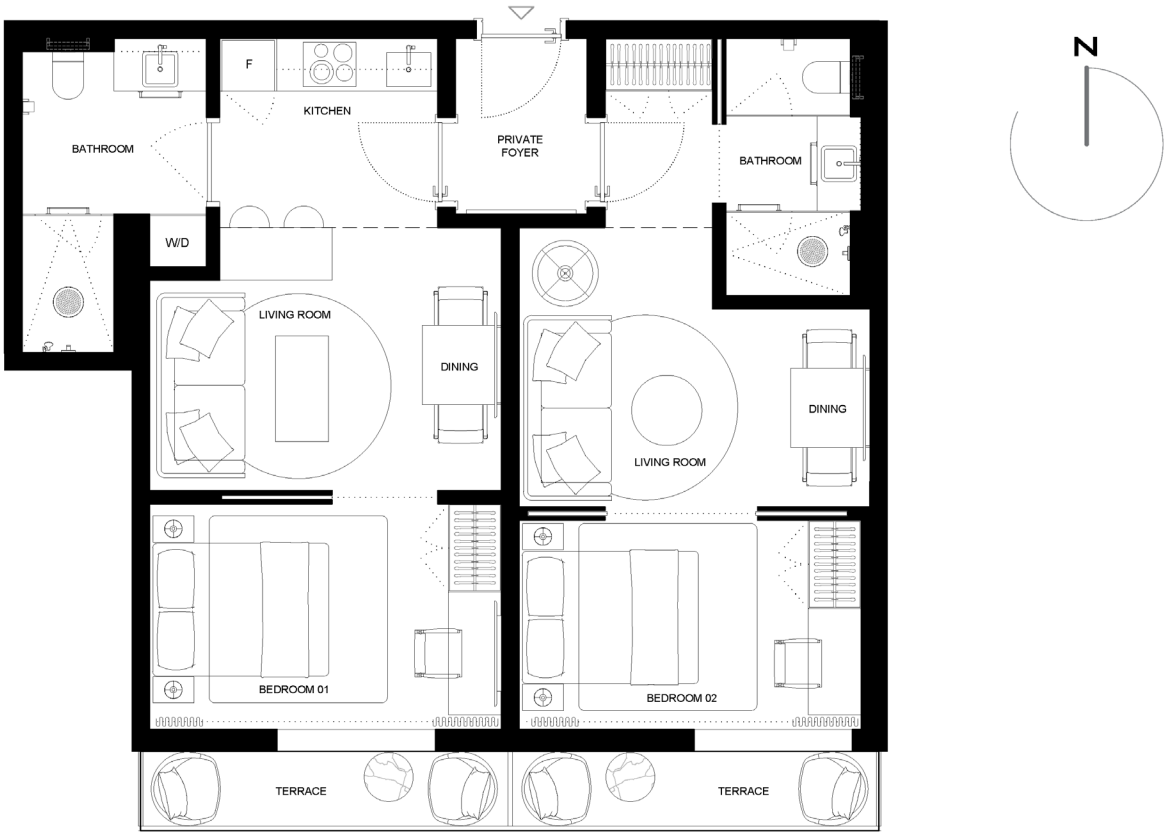
FLOORPLANS

EDGEWATER MIAMI  
**VIDA**<sup>®</sup>  
RESIDENCES

**UNIT 08**

**2 BED + 2 BATH**

|          |                |
|----------|----------------|
| INTERIOR | 849sqft/78,9m2 |
| EXTERIOR | 134sqft/12,4m2 |
| TOTAL    | 983sqft/91,3m2 |



|    |    |    |    |    |    |    |    |    |
|----|----|----|----|----|----|----|----|----|
| 01 | 03 | 05 | 07 | 09 | 11 | 13 | 15 | 17 |
|    | 02 | 04 | 06 | 08 | 10 | 12 | 14 | 16 |

These drawings are conceptual only and are for the convenience of reference. They should not be relied upon as representations, express or implied, of the final detail of the residences. Units shown are examples of unit types and may not depict actual units. Stated square footages are ranges for a particular unit type and are measured to the exterior boundaries of the exterior walls and the centerline of interior demising walls and in fact vary from the area that would be determined by using the description and definition of the unit set forth in the declaration (which generally only includes the interior airspace between the perimeter walls and excludes interior structural components). Note that measurements of rooms set forth on this floorplan are generally taken at the greatest points of each given room (as if the room were a perfect rectangle), without regards for any cutouts. Accordingly, the area of the actual room will typically be smaller than the product obtained by multiplying the stated length times width. All dimensions are approximate and may vary with actual construction, and all floor plans and development plans are subject to change.



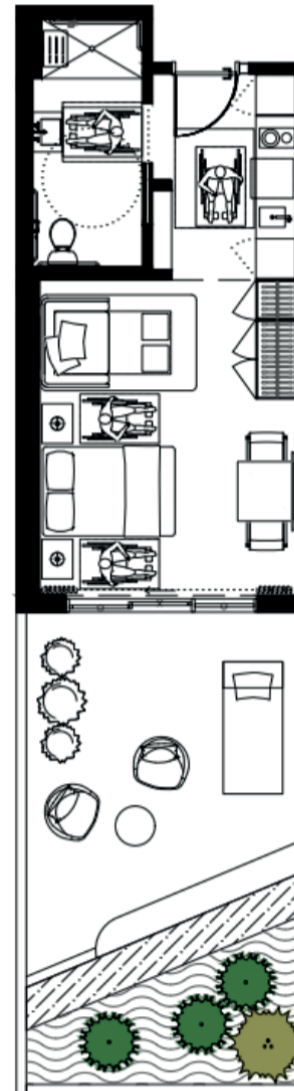
## FLOORPLANS



### UNIT TYPE A.2 #302

#### STUDIO

|              |                     |
|--------------|---------------------|
| INTERIOR     | 420sf/39M2          |
| EXTERIOR     | 353sf/32,8M2        |
| <b>TOTAL</b> | <b>773sf/71,8M2</b> |



|     |     |     |     |  |     |     |     |     |     |     |     |     |     |     |     |     |     |     |     |     |
|-----|-----|-----|-----|--|-----|-----|-----|-----|-----|-----|-----|-----|-----|-----|-----|-----|-----|-----|-----|-----|
| 301 | 303 | 305 | 307 |  | 309 | 311 | 313 | 315 | 317 | 319 | 321 | 323 | 325 | 327 | 329 |     | 331 | 333 | 335 | 337 |
|     |     |     |     |  |     |     |     |     |     |     |     |     |     |     |     |     |     |     |     |     |
| 302 | 304 | 306 | 308 |  | 310 |     | 312 |     |     | 318 |     | 320 | 322 | 324 | 326 | 328 | 330 | 332 | 334 | 336 |
|     |     |     |     |  |     |     |     |     |     |     |     |     |     |     |     |     |     |     |     |     |

These drawings are conceptual only and are for the convenience of reference. They should not be relied upon as representations, express or implied, of the final detail of the residences. Units shown are examples of unit types and may not depict actual units. Stated square footages are ranges for a particular unit type and are measured to the exterior boundaries of the exterior walls and in fact vary from the area that would be determined by using the description and definition of the unit set forth in the declaration (which generally only includes the interior airspace between the perimeter walls and excludes interior structural components). Note that measurements of rooms set forth on this floorplan are generally taken at the greatest points of each given room (as if the room were a perfect rectangle), without regards for any cutouts. Accordingly, the area of the actual room will typically be smaller than the product obtained by multiplying the stated length times width. All dimensions are approximate and may vary with actual construction, and all floor plans and development plans are subject to change.

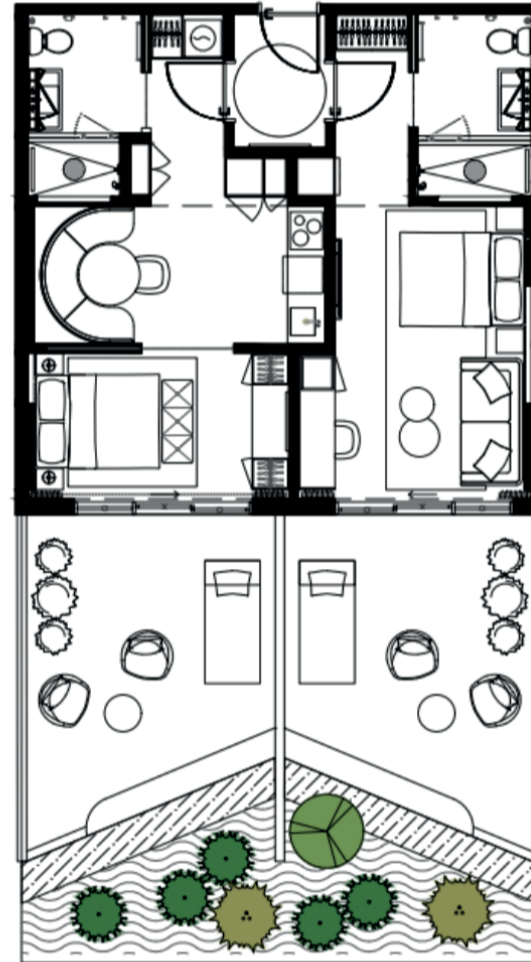
## FLOORPLANS



### UNIT TYPE E.1 #310

**2 BED + 2 BATH**

INTERIOR 774SF/71,9M2  
EXTERIOR 682SF/63,4M2  
**TOTAL 1456SF/135,3M2**



|     |     |     |     |     |     |     |     |     |     |     |     |     |     |     |     |     |     |     |
|-----|-----|-----|-----|-----|-----|-----|-----|-----|-----|-----|-----|-----|-----|-----|-----|-----|-----|-----|
| 301 | 303 | 305 | 307 | 309 | 311 | 313 | 315 | 317 | 319 | 321 | 323 | 325 | 327 | 329 | 331 | 333 | 335 | 337 |
| 302 | 304 | 306 | 308 | 310 | 312 |     |     | 318 | 320 | 322 | 324 | 326 | 328 | 330 | 332 | 334 | 336 |     |

These drawings are conceptual only and are for the convenience of reference. They should not be relied upon as representations, express or implied, of the final detail of the residences. Units shown are examples of unit types and may not depict actual units. Stated square footages are ranges for a particular unit type and are measured to the exterior boundaries of the exterior walls and the centerline of interior demising walls and in fact vary from the area that would be determined by using the description and definition of the unit set forth in the declaration (which generally only includes the interior airspace between the perimeter walls and excludes interior structural components). Note that measurements of rooms set forth on this floorplan are generally taken at the greatest points of each given room (as if the room were a perfect rectangle), without regards for any cutouts. Accordingly, the area of the actual room will typically be smaller than the product obtained by multiplying the stated length times width. All dimensions are approximate and may vary with actual construction, and all floor plans and development plans are subject to change.

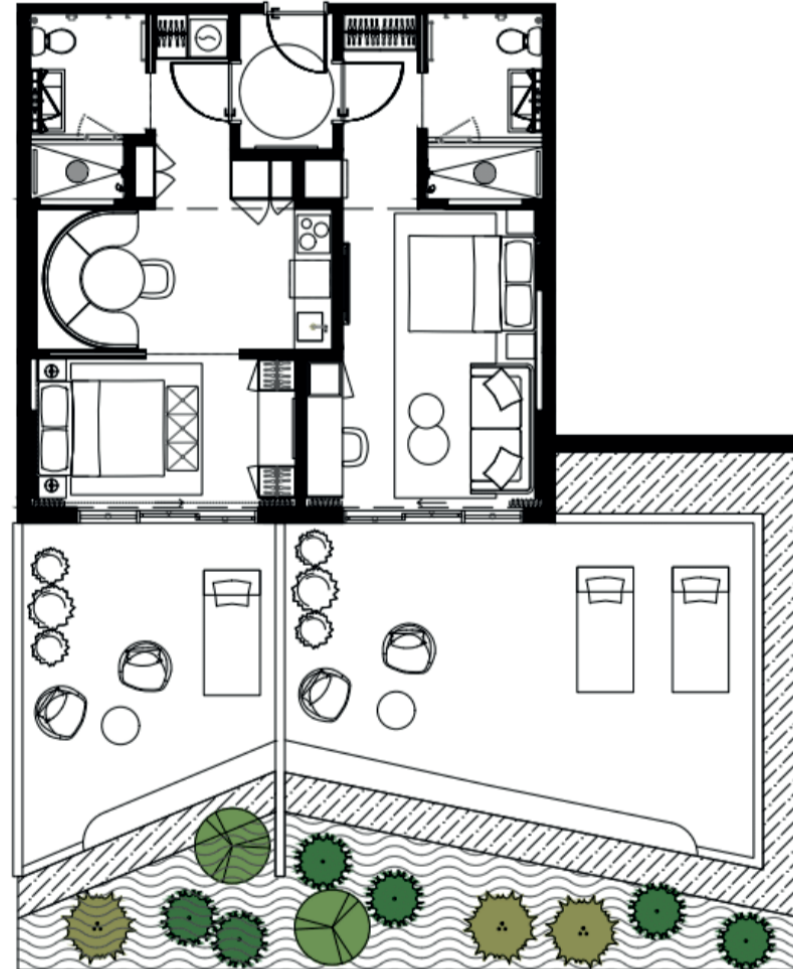
## FLOORPLANS



### UNIT TYPE E.2 #312

**2 BED + 2 BATH**

INTERIOR 774SF/71,9M2  
EXTERIOR 1073SF/99,7M2  
TOTAL 1847SF/171,6M2



|     |     |     |     |     |     |     |     |     |     |     |     |     |     |     |     |     |     |     |     |     |
|-----|-----|-----|-----|-----|-----|-----|-----|-----|-----|-----|-----|-----|-----|-----|-----|-----|-----|-----|-----|-----|
| 301 | 303 | 305 | 307 |     | 309 | 311 | 313 | 315 | 317 | 319 | 321 | 323 | 325 | 327 | 329 |     | 331 | 333 | 335 | 337 |
| 302 | 304 | 306 | 308 | 310 | 312 |     |     |     | 318 | 320 | 322 | 324 | 326 | 328 | 330 | 332 | 334 | 336 |     |     |

These drawings are conceptual only and are for the convenience of reference. They should not be relied upon as representations, express or implied, of the final detail of the residences. Units shown are examples of unit types and may not depict actual units. Stated square footages are ranges for a particular unit type and are measured to the exterior boundaries of the exterior walls and the centerline of interior demising walls and in fact vary from the area that would be determined by using the description and definition of the unit set forth in the declaration (which generally only includes the interior airspace between the perimeter walls and excludes interior structural components). Note that measurements of rooms set forth on this floorplan are generally taken at the greatest points of each given room (as if the room were a perfect rectangle), without regards for any cutouts. Accordingly, the area of the actual room will typically be smaller than the product obtained by multiplying the stated length times width. All dimensions are approximate and may vary with actual construction, and all floor plans and development plans are subject to change.

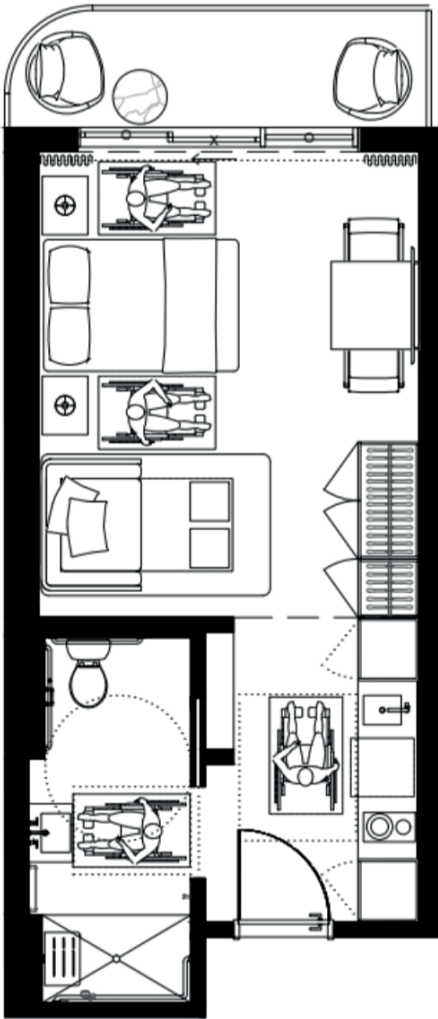
FLOORPLANS



UNIT TYPE A.1  
#401

STUDIO

|          |                |
|----------|----------------|
| INTERIOR | 420SF/39M2     |
| EXTERIOR | 58,5SF/2,6M2   |
| TOTAL    | 478,5SF/44,5M2 |



|     |     |     |     |     |     |     |     |     |     |     |     |     |     |     |     |     |     |     |
|-----|-----|-----|-----|-----|-----|-----|-----|-----|-----|-----|-----|-----|-----|-----|-----|-----|-----|-----|
| 401 | 403 | 405 | 407 | 409 | 411 | 413 | 415 | 417 | 419 | 421 | 423 | 425 | 427 | 429 | 431 | 433 | 435 | 437 |
| 402 | 404 | 406 | 408 | 410 | 412 | 418 | 420 | 422 | 424 | 426 | 428 | 430 | 432 | 434 | 436 |     |     |     |

These drawings are conceptual only and are for the convenience of reference. They should not be relied upon as representations, express or implied, of the final detail of the residences. Units shown are examples of unit types and may not depict actual units. Stated square footages are ranges for a particular unit type and are measured to the exterior boundaries of the exterior walls and the centerline of interior demising walls and in fact vary from the area that would be determined by using the description and definition of the unit set forth in the declaration (which generally only includes the interior airspace between the perimeter walls and excludes interior structural components). Note that measurements of rooms set forth on this floorplan are generally taken at the greatest points of each given room (as if the room were a perfect rectangle), without regards for any cutouts. Accordingly, the area of the actual room will typically be smaller than the product obtained by multiplying the stated length times width. All dimensions are approximate and may vary with actual construction, and all floor plans and development plans are subject to change.



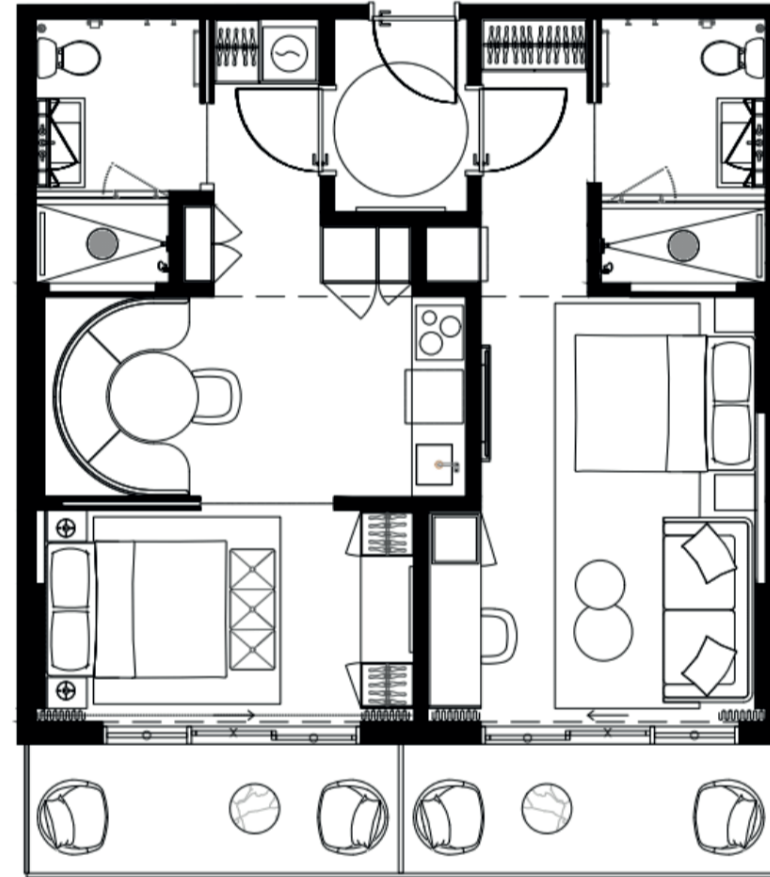
## FLOORPLANS



### UNIT TYPE E.1 #420

**2 BED + 2 BATH**

|              |                     |
|--------------|---------------------|
| INTERIOR     | 774SF/71,9M2        |
| EXTERIOR     | 140SF/13M2          |
| <b>TOTAL</b> | <b>914SF/84,9M2</b> |



|     |     |     |     |     |     |     |     |     |     |     |     |     |     |     |     |     |     |     |
|-----|-----|-----|-----|-----|-----|-----|-----|-----|-----|-----|-----|-----|-----|-----|-----|-----|-----|-----|
| 401 | 403 | 405 | 407 | 409 | 411 | 413 | 415 | 417 | 419 | 421 | 423 | 425 | 427 | 429 | 431 | 433 | 435 | 437 |
| 402 | 404 | 406 | 408 | 410 | 412 | 418 | 420 | 422 | 424 | 426 | 428 | 430 | 432 | 434 | 436 |     |     |     |

These drawings are conceptual only and are for the convenience of reference. They should not be relied upon as representations, express or implied, of the final detail of the residences. Units shown are examples of unit types and may not depict actual units. Stated square footages are ranges for a particular unit type and are measured to the exterior boundaries of the exterior walls and the centerline of interior demising walls and in fact vary from the area that would be determined by using the description and definition of the unit set forth in the declaration (which generally only includes the interior airspace between the perimeter walls and excludes interior structural components). Note that measurements of rooms set forth on this floorplan are generally taken at the greatest points of each given room (as if the room were a perfect rectangle), without regards for any cutouts. Accordingly, the area of the actual room will typically be smaller than the product obtained by multiplying the stated length times width. All dimensions are approximate and may vary with actual construction, and all floor plans and development plans are subject to change.

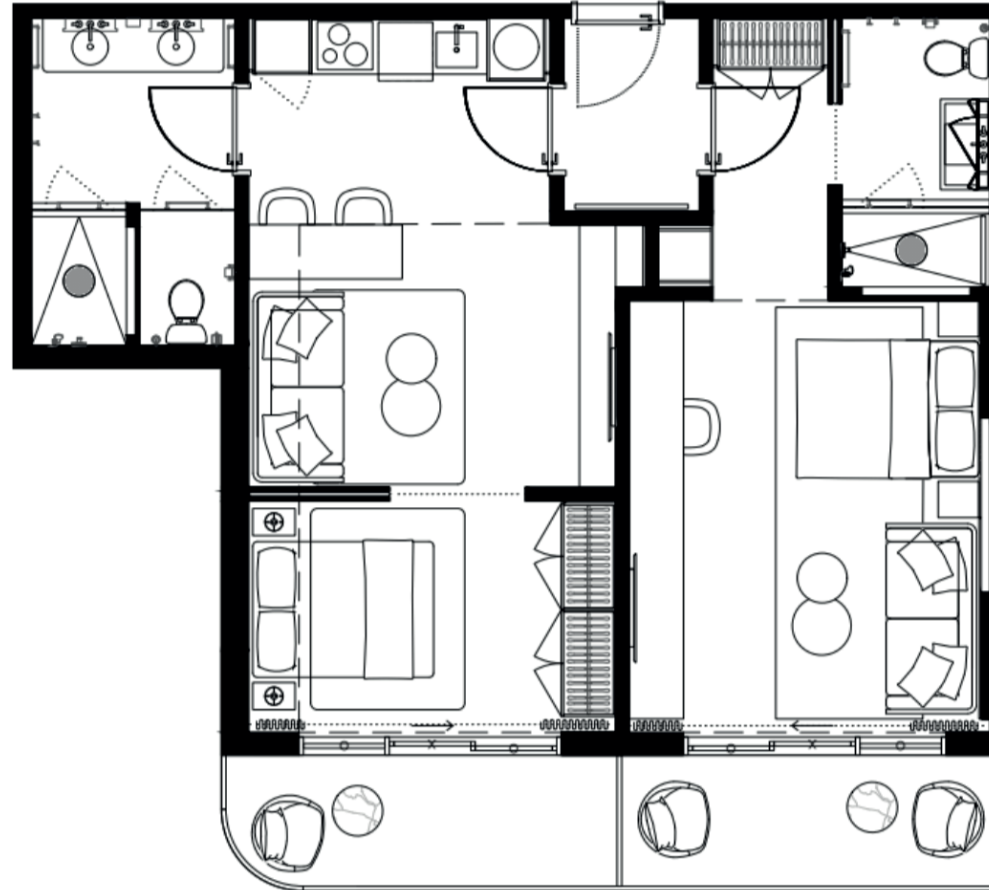
## FLOORPLANS

EDGEWATER MIAMI  
**VIDA**<sup>®</sup>  
RESIDENCES

**UNIT TYPE F**  
#418

**2 BED + 2 BATH**

INTERIOR 888sf/82,5M2  
EXTERIOR 141sf/13M2  
TOTAL 1029sf/95,5M2



|     |     |     |     |     |     |     |     |     |     |     |     |     |     |     |     |     |     |     |
|-----|-----|-----|-----|-----|-----|-----|-----|-----|-----|-----|-----|-----|-----|-----|-----|-----|-----|-----|
| 401 | 403 | 405 | 407 | 409 | 411 | 413 | 415 | 417 | 419 | 421 | 423 | 425 | 427 | 429 | 431 | 433 | 435 | 437 |
| 402 | 404 | 406 | 408 | 410 | 412 | 418 | 420 | 422 | 424 | 426 | 428 | 430 | 432 | 434 | 436 |     |     |     |



These drawings are conceptual only and are for the convenience of reference. They should not be relied upon as representations, express or implied, of the final detail of the residences. Units shown are examples of unit types and may not depict actual units. Stated square footages are ranges for a particular unit type and are measured to the exterior boundaries of the exterior walls and the centerline of interior demising walls and in fact vary from the area that would be determined by using the description and definition of the unit set forth in the declaration (which generally only includes the interior airspace between the perimeter walls and excludes interior structural components). Note that measurements of rooms set forth on this floorplan are generally taken at the greatest points of each given room (as if the room were a perfect rectangle), without regards for any cutouts. Accordingly, the area of the actual room will typically be smaller than the product obtained by multiplying the stated length times width. All dimensions are approximate and may vary with actual construction, and all floor plans and development plans are subject to change.