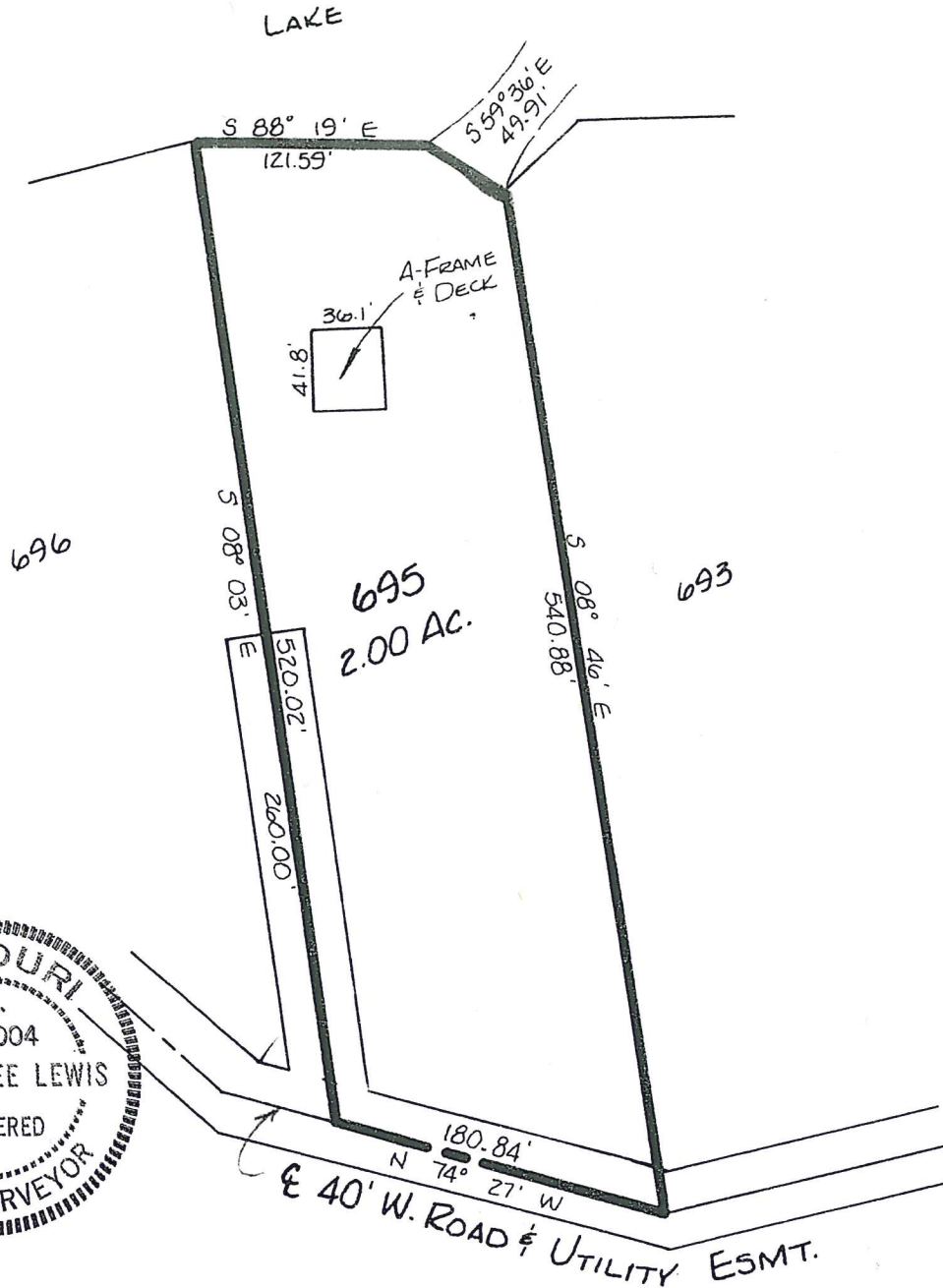


SPOT SURVEY
SECTION 10 & 15, TOWNSHIP 46 NORTH, RANGE 1 WEST
WARREN COUNTY, MO.
INNSBROOK ESTATES - PLAT TWENTY-THREE



THIS IS TO CERTIFY THAT AT THE REQUEST
"INNSBROOK CORP."
HAVE MADE A SURVEY AS SHOWN ABOVE
AND THAT THE RESULTS OF SAID SURVEY
CORRECTLY REPRESENTED UPON THIS
T. *Robert L. Lewis*
ROBERT L. LEWIS R.L.S. No. 1004

		COUNTY ENGINEERING, INC.	
		LAND SURVEYORS PROFESSIONAL ENGINEERS	
PHONE (314) 456-2615 • 101 EAST WALTON • WARRENTON MO 63383			
SURVEYED BY	DATE	REVISIONS	
STU, MAX, JIM	9/90		
DRAWN BY	CHECKED BY	SCALE	
VICKI	LARRY	1"=100'	

