

Total Finished

Square Footage: 17,620 SQ FT

Above-Grade: 10,696 SQ FT Below-Grade: 6,924 SQ FT

Calculated per ANSI Standard Z765-2021

- Main Residence: 15,766 SQ FT
 - Main Level: 4,670 SQ FT
 - Upper Level: 4,172 SQ FT
 - Lower Level: 6,924 SQ FT

- Guest House: 1,609 SQ FT
 - First Floor Entrance: 118 SQ FT
 - Second Floor: 1,491 SQ FT

- Pool House: 245 SQ FT

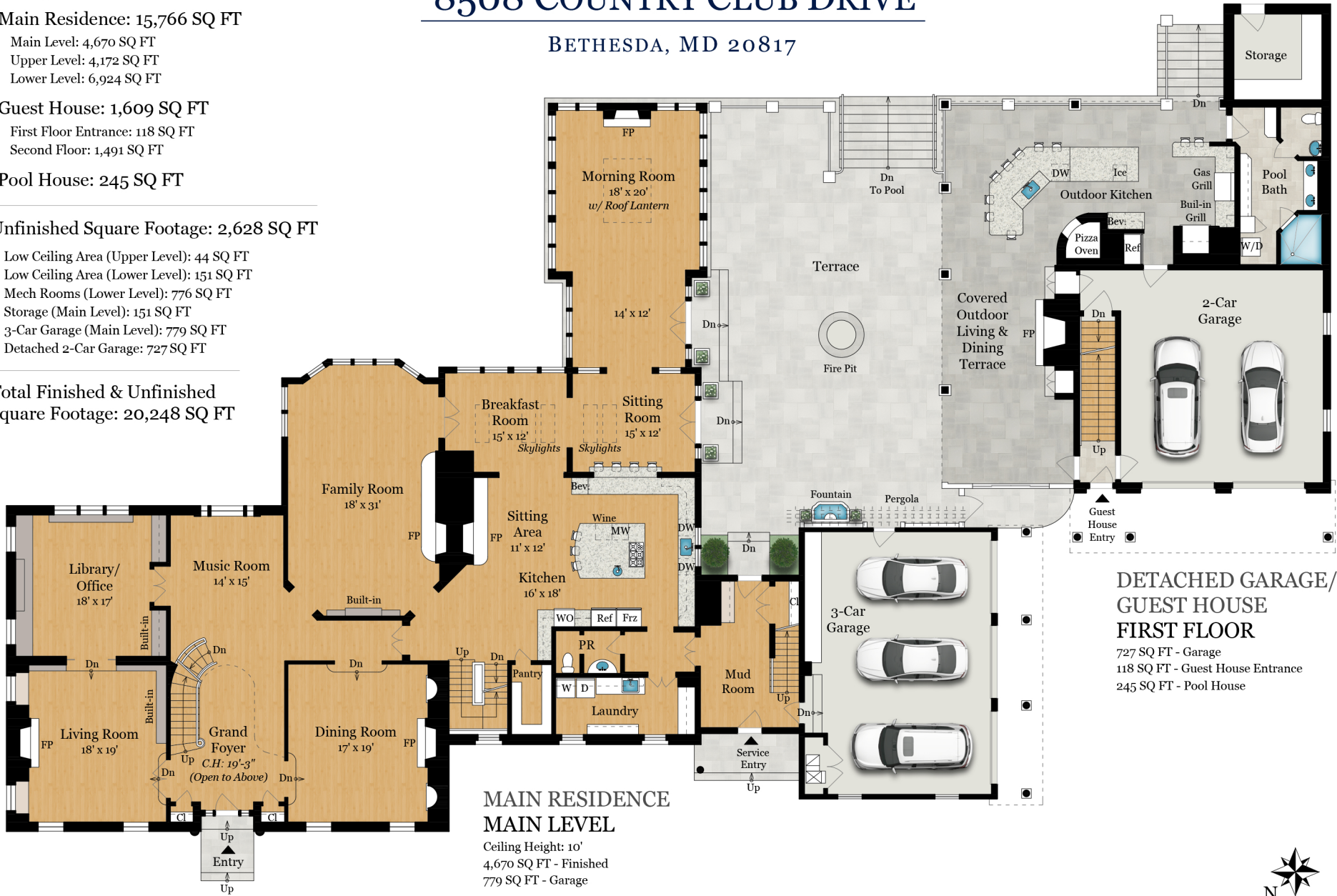
Unfinished Square Footage: 2,628 SQ FT

- Low Ceiling Area (Upper Level): 44 SQ FT
- Low Ceiling Area (Lower Level): 151 SQ FT
- Mech Rooms (Lower Level): 776 SQ FT
- Storage (Main Level): 151 SQ FT
- 3-Car Garage (Main Level): 779 SQ FT
- Detached 2-Car Garage: 727 SQ FT

Total Finished & Unfinished Square Footage: 20,248 SQ FT

8508 COUNTRY CLUB DRIVE

BETHESDA, MD 20817



8508 COUNTRY CLUB DRIVE

BETHESDA, MD 20817



MAIN RESIDENCE UPPER LEVEL

Ceiling Height: 8'-4"
4,172 SQ FT



GUEST HOUSE SECOND FLOOR

Ceiling Height: 9'
1,491 SQ FT



8508 COUNTRY CLUB DRIVE

BETHESDA, MD 20817



**MAIN RESIDENCE
LOWER LEVEL**
Ceiling Height: 8'-6" to 8'-9"
7,075 SQ FT



Rendering by Arcdimension
All measurements are approximate. While deemed reliable, no information on these floor plans should be relied upon without independent verification.