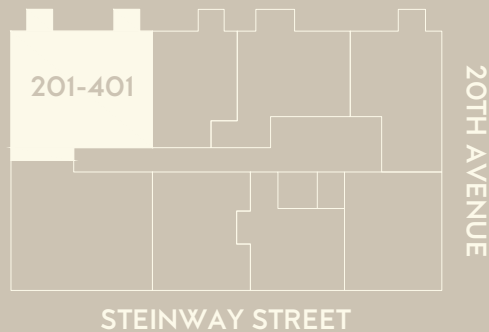


Sophie

SOPHIECONDOS.COM

RESIDENCE FEATURES

- European White Oak Floors
- Double - Pane Windows
- Appliances by Bosch
- Refrigerator by Blomberg
- Washer / Dryer
- Quartz Backsplash and Counters
- Custom European Kitchen and Vanity
- Italian Porcelain Tile
- Grohe Fixtures
- Vented Kitchen



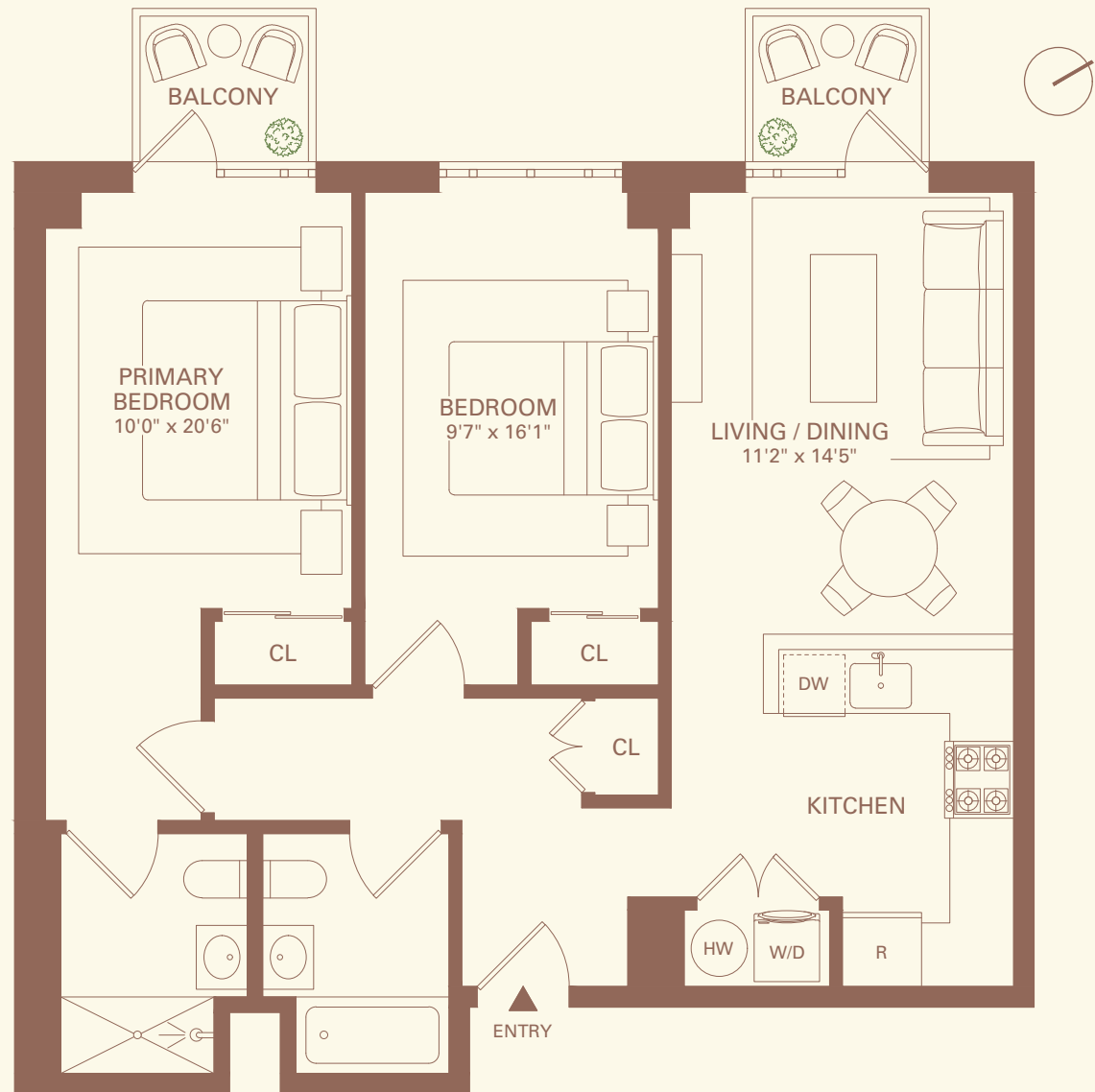
Aleksey Gavrilov
agavrilov@corcoran.com
(347) 617-7690

Joseph Grosso
jgrosso@corcoran.com
(917) 328-7824

sophiecondos@corcoran.com
Exclusive Sales and Marketing by
The Gavrilov Grosso Team &
Corcoran New Development.

2008 STEINWAY STREET UNIT 201-401

2 BEDROOMS
2 BATHROOMS
INT: 945 SQ FT
EXT: 60 SQ FT



This is not an offering. The complete Offering Terms are in an Offering Plan available from the Sponsor. File No. CD24-0060. All dimensions are approximate and subject to the construction variances and tolerances. Plans and dimensions may contain minor variations from floor to floor. Sponsor reserves the right to make changes in accordance with the offering plan. Equal Housing Opportunity.