

117 Chalmers St.

PLAN OF SURVEY OF
LOTS 85-96 INCL., PLAN M-219
TOWN OF OAKVILLE
REGIONAL MUNICIPALITY OF HALTON

SCALE: 1" = 40'

C.F. denotes CONCRETE FOUNDATION
F.F. denotes FINISHED FLOOR ELEVATION

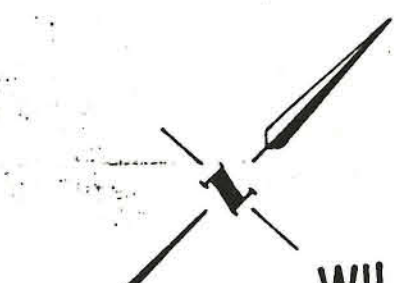
ANPAM CONSTRUCTION LTD.
211 CONSUMERS ROAD,
WILLOWDALE, ONTARIO

UNWIN, MURPHY & ESTEN LTD.
ONTARIO LAND SURVEYORS
1243 ISLINGTON AVENUE, TORONTO, ONT.
TEL. 233-2161 DATE SEPTEMBER 7, 1979.

REVISION:

LOTS 92 TO 96 INCL. ADDED OCT. 11 /79
LOTS 87 TO 89 INCL. ADDED OCT. 22 /79
LOTS 85 AND 86 ADDED NOV 28 /79

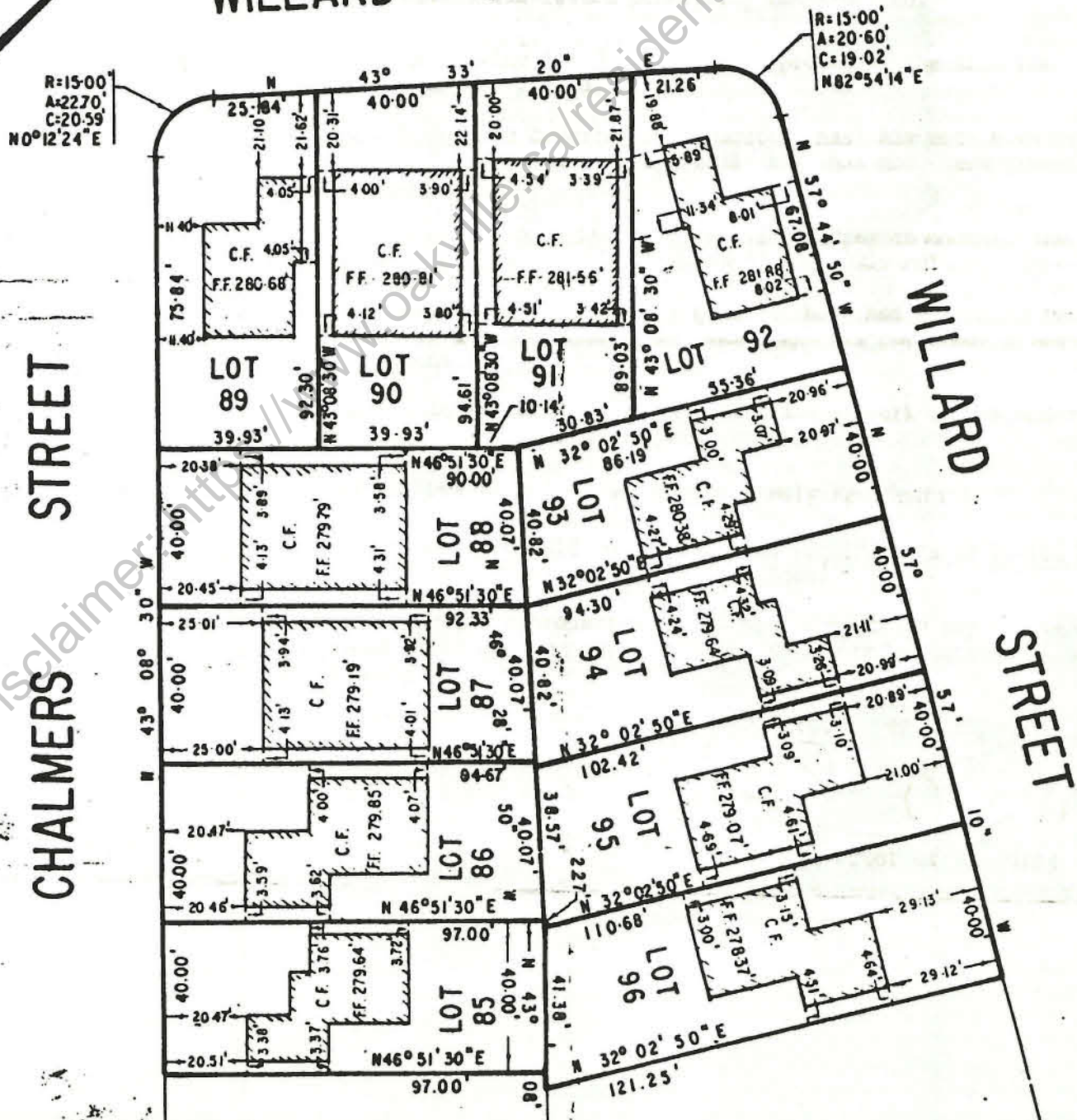
PER: *[Signature]*



WILLARD STREET

CHALMERS STREET

WILLARD STREET



TOWN OF OAKVILLE
ZONING DEPARTMENT
Approved by: *[Signature]*
DEC 7 1979