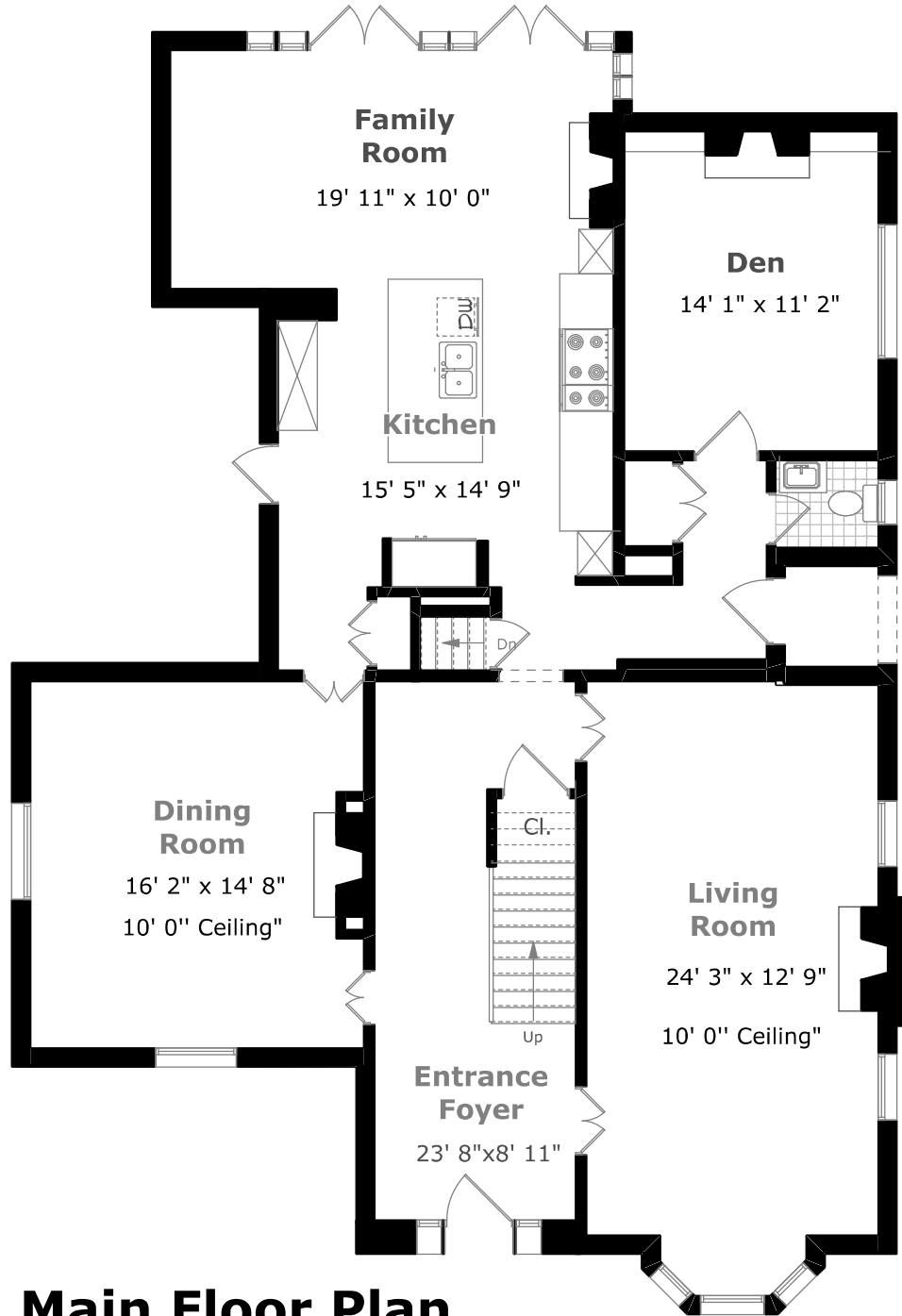
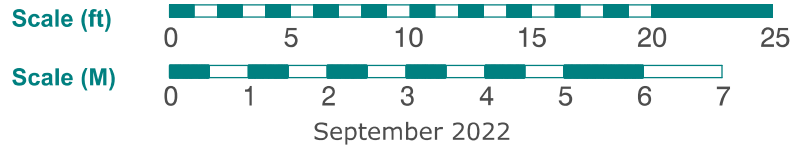


# 349 Trafalgar Road



## Main Floor Plan

1,700.3 sq. ft.  
8' 8" Ceiling



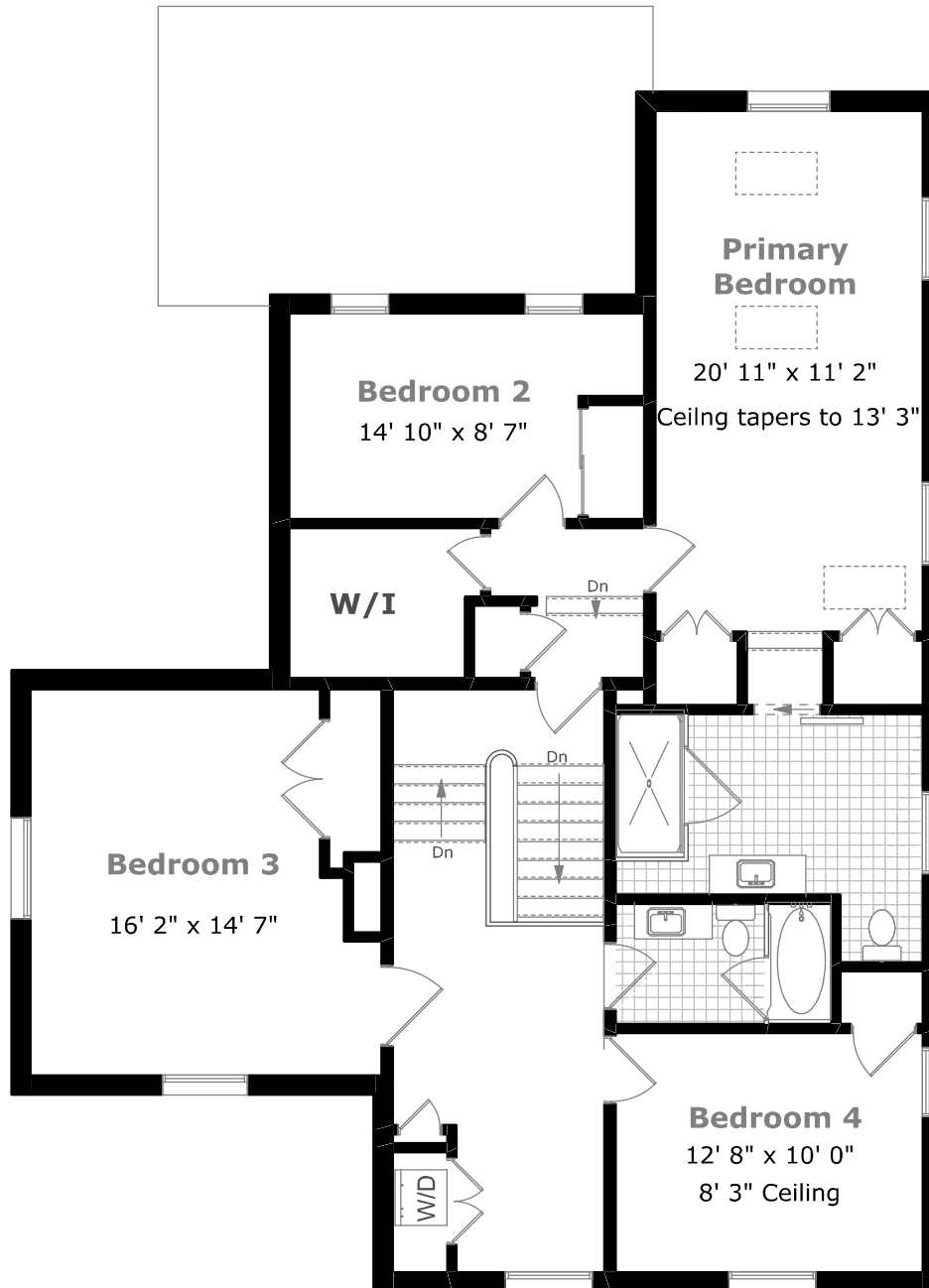
Measurements may not be 100% accurate. Floor Plans provided for illustrative purposes only. Room sizes not used to calculate area.

# 349 Trafalgar Road

Scale (ft) 0 5 10 15 20 25

Scale (M) 0 1 2 3 4 5 6 7

September 2022



## 2nd Floor Plan

1,444.8 sq. ft.

8' 3" Ceiling



Measurements may not be 100% accurate. Floor Plans provided for illustrative purposes only. Room sizes not used to calculate area.

# 349 Trafalgar Road

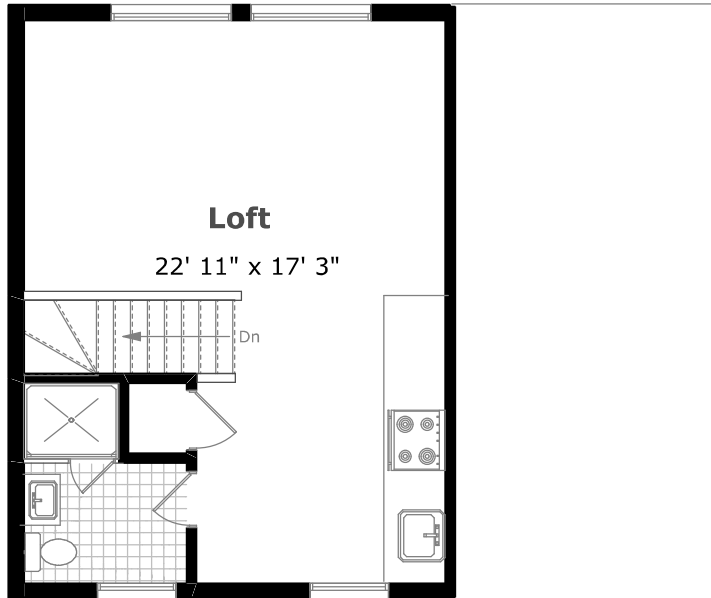
Scale (ft)



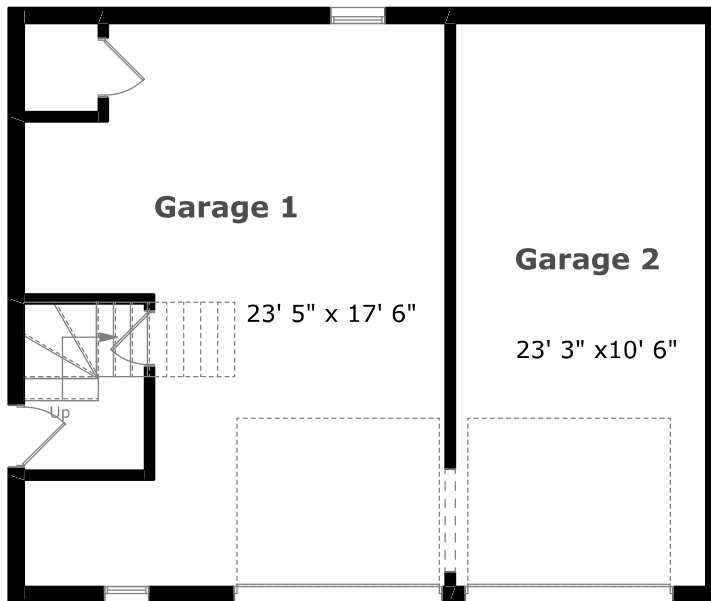
Scale (M)



September 2022



459.9 sq. ft.



734.3 sq. ft.

## Garage & Loft Floor Plan



Measurements may not be 100% accurate. Floor Plans provided for illustrative purposes only. Room sizes not used to calculate area.