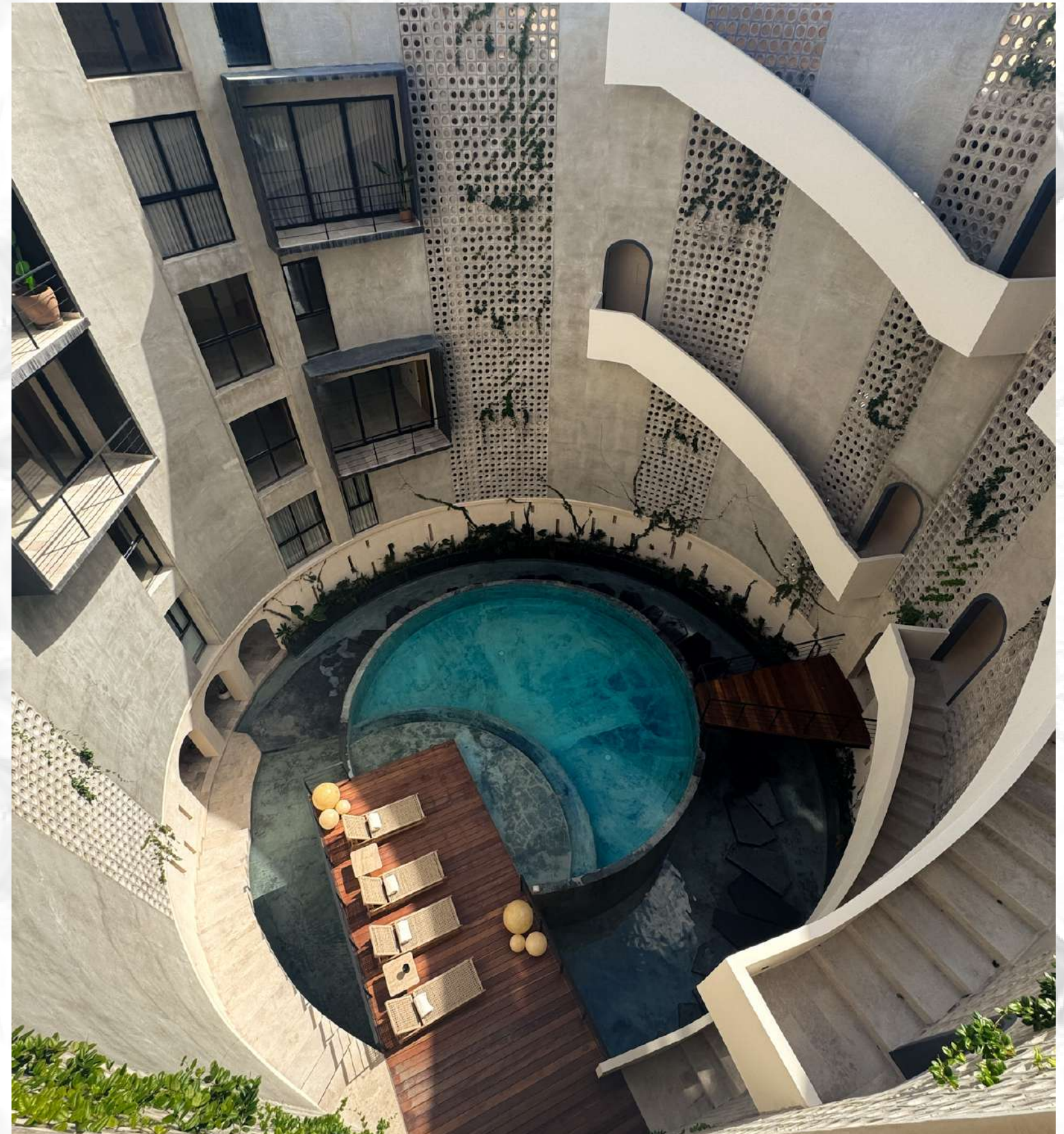


ONIRIC  
● T U L U M ●

# INDEX

1. Oniric Tulum
2. Architecture
3. Low Density
4. Interior Design
5. The Residences
6. Finishes & Features
7. Engineered for Quiet & Longevity
8. Mind, Body & Soul
9. Beach Club Access
10. Location
11. Tulum International Airport
12. Mayan Train
13. Why Oniric?





# ONIRIC TULUM

Residences inside a hand-made cenote.

We carved the cenote as the heart, then wrapped a timeless collection of residences around its light.

Beyond reality, a journey into freedom.



# Arkham

Our vision has always been to create a development that embodies both functionality and artistry, while remaining true to Tulum's essence. To bring this to life, we collaborated with **Arkham Projects**, whose architectural vision aligned perfectly with ours.

Together, we transformed surreal ideas into forms that interact with light and shadow, where time itself becomes a protagonist. Like a sundial, each space reveals new dimensions throughout the day, embodying Tulum's timeless and vibrant spirit.



and more...



# LOW DENSITY

Where nature whispers, art awakens, and design inspires. This is not another high-density block of apartments lost in the market. Oniric stands apart: boutique, authentic, crafted for those who expect more.





# INTERIOR DESIGN

For the interiors of Oniric Tulum, we partnered with **World by Hand**, a creative studio based in Tulum that curates unique pieces inspired by nature and crafted with care. Their approach blends design, artistry, and authenticity to create spaces that reflect Tulum's essence. With a focus on individuality over mass-produced design, their work brings a refined and soulful character to Oniric's interiors.





# THE RESIDENCES

Oniric offers 1- and 3-bedroom residences designed to be as livable as they are rentable.

- Only 27 open, light-filled layouts that flow seamlessly with nature.
- Premium finishes with extended warranties and low-maintenance requirements.
- Private terraces, assigned parking, and plunge pools.
- Fully adaptable for both personal living and short-term rental income.

# FINISHES & FEATURES

**MAYAN STONE**  
Regional stone, Laja type



**HANDMADE CENOTE**  
Hand-formed Concrete Latticework



**FINISHES**  
Natural Chukum Stucco



**FLOORING**  
Travertine Marble



**POOL**  
Polished Concrete



**FINISHES**  
Mineral White Lime Stucco (Sascab tone)



**AMENITY FLOORING**  
Santo Tomás Marble



# ixina

German Kitchens  
10-YEAR WARRANTY

 smeg

Premium European Appliances

 MOEN

High-end Faucets & Fixtures

 TRANE

Energy-efficient VRF Air  
Conditioning

IXINA  
Kitchen

Granite  
Antartic White

SMEG  
Appliances



Chukum  
Stucco

Travertine  
Marble





# ENGINEERED FOR QUIET & LONGEVITY

Essential systems that protect comfort, value, and time.

## High-Efficient VRF A/C

Personalized climate comfort in every apartment.

## Complete Water System

Water softener, premium filtration, treatment plant, and oversized cistern for reliable autonomy.

## Connectivity

Fiber-optic internet ready for seamless living.

## Premium Kitchens

Induction cooktops by **SMEG**, integrated into modern **IXINA** designs.

## Centralized Waste Management

Waste chute on every level connected to a sealed collection room.

## Property Management

Optional in-house service (15%) for complete peace of mind.



# MIND, BODY & SOUL

## THE AMENITIES

Oniric is more than a residence. It's an experience for holistic living.

Step into a cenote-inspired pool that mirrors Tulum's most sacred waters. Recenter on the yoga deck at sunrise. Recharge with wellness rituals. Connect over cocktails at the hidden speakeasy. Focus in the coworking lounge, then unwind under the jungle canopy. Every space is designed to nurture mind, body, and soul, because true luxury is balance.

- One of a kind Handmade Architectural Cenote
- Rooftop terraces with jungle views
- Yoga and meditation spaces
- Massage studio
- Steam room and ice bath for deep wellness
- Speakeasy bar
- Coworking and creative lounge
- Concierge service
- Secure gated access
- Lush landscaped gardens
- Air conditioned gym
- Elevator





# BEACH CLUB ACCESS

Life at Oniric extends naturally from the jungle to the sea. As an owner, you enjoy exclusive access to some of Tulum's most coveted barefoot luxury beach clubs, carefully selected partners that embody the same spirit of artistry, wellness, and refined living that defines Oniric, where music, cuisine, and community blend seamlessly.

*La Eufemia*  
HIPPIE PALACE TACO BOUTIQUE

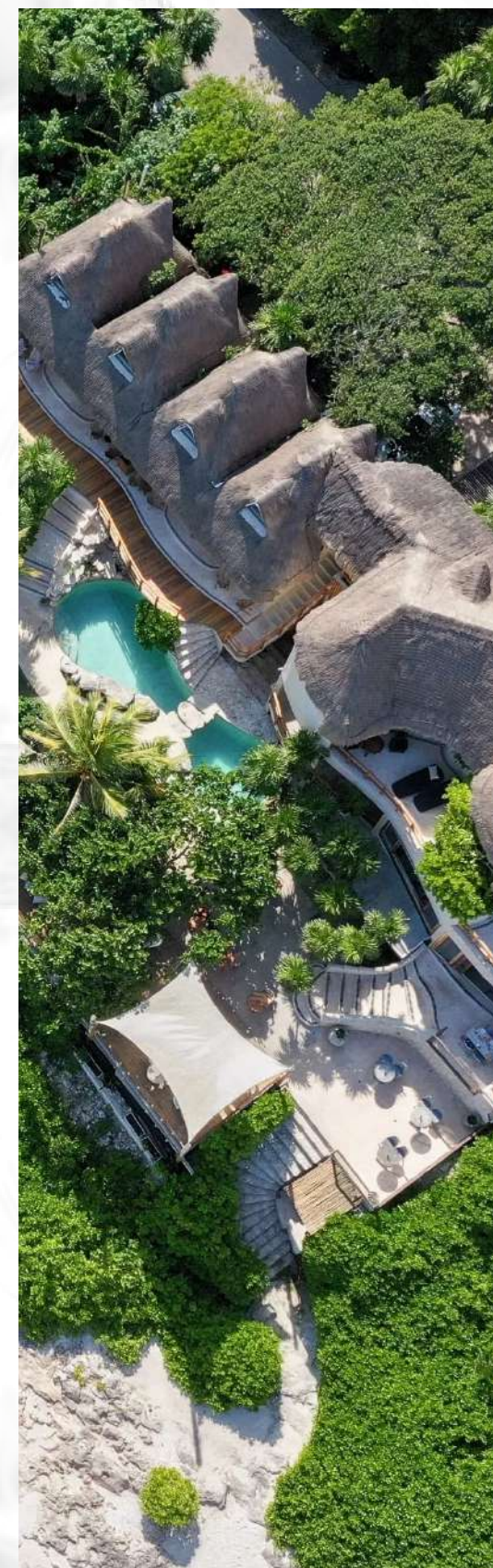
*Lula*  
SEASIDE BOUTIQUE HOTEL

○ ☀ ○ ●  
MAYA TULUM

 **MEZZANINE**  
RESTAURANT · BAR · HOTEL

 **LA ZEBRA**  
BEACH HOTEL & RESTAURANT

 **MI AMOR**  
ECO CHIC  
HOTEL BOUTIQUE · RESTAURANT · SPA



# LOCATION

- Located in Region 8, the closest to the beach in Tulum, placing ONIRIC in the heart of unique exclusive real estate spot.
- Region 8 is the newest early-investment area in Tulum, forecasting high capital gains.
- At a main road, Guardianes Maya Ave. and with easy paved access through 65 Ave.
- 5 minutes from the beach and 7 minutes from downtown Tulum, only 500 m away from Av. Kukulcan that leads to the beach.





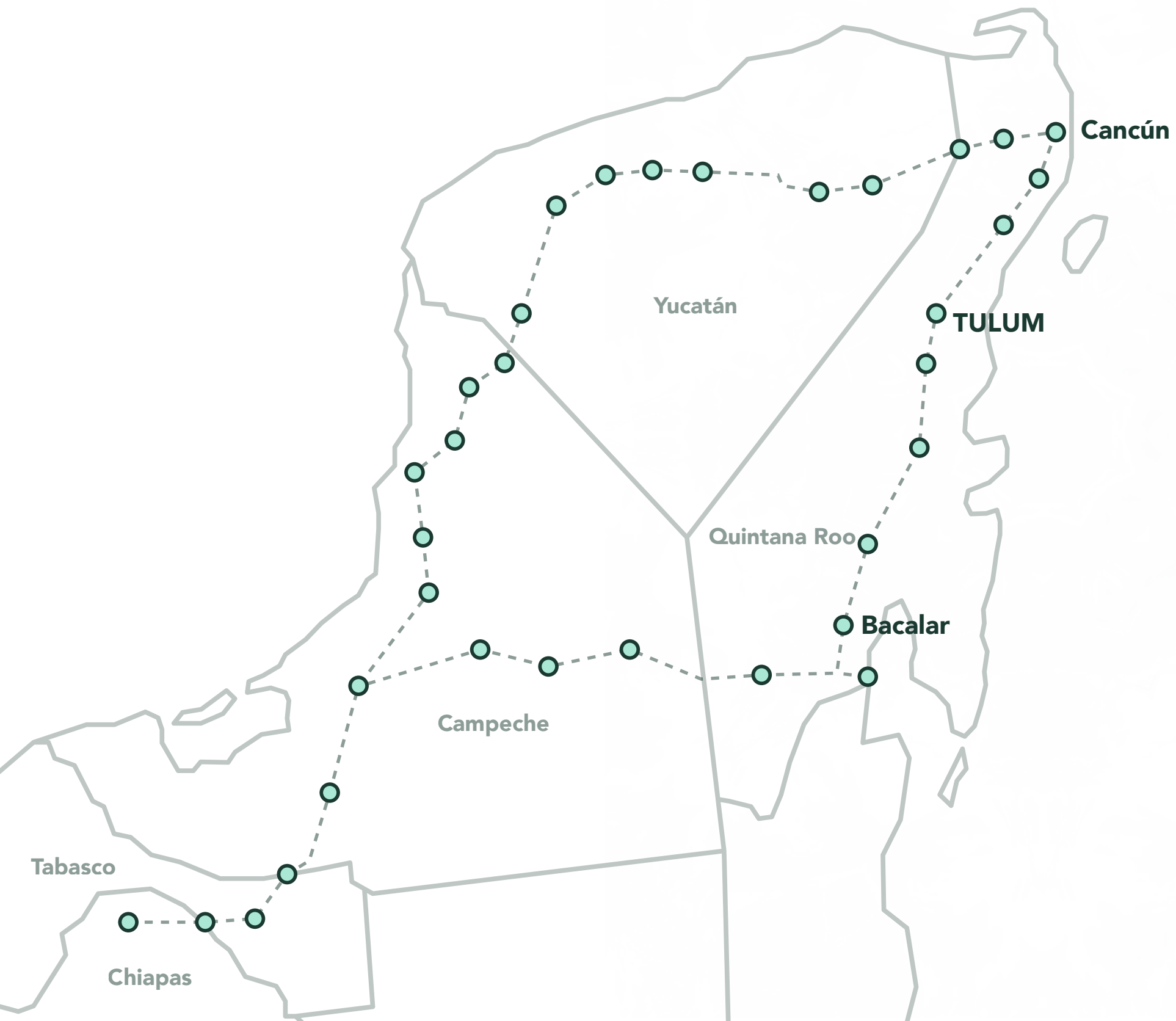


# TULUM INTERNATIONAL AIRPORT

A New Era of Connectivity

Tulum's new International Airport brings the world closer than ever, with direct flights from major U.S. cities already in operation. This unprecedented accessibility is fueling global tourism, boosting demand, and driving real estate values upward, making now the ideal moment to invest.



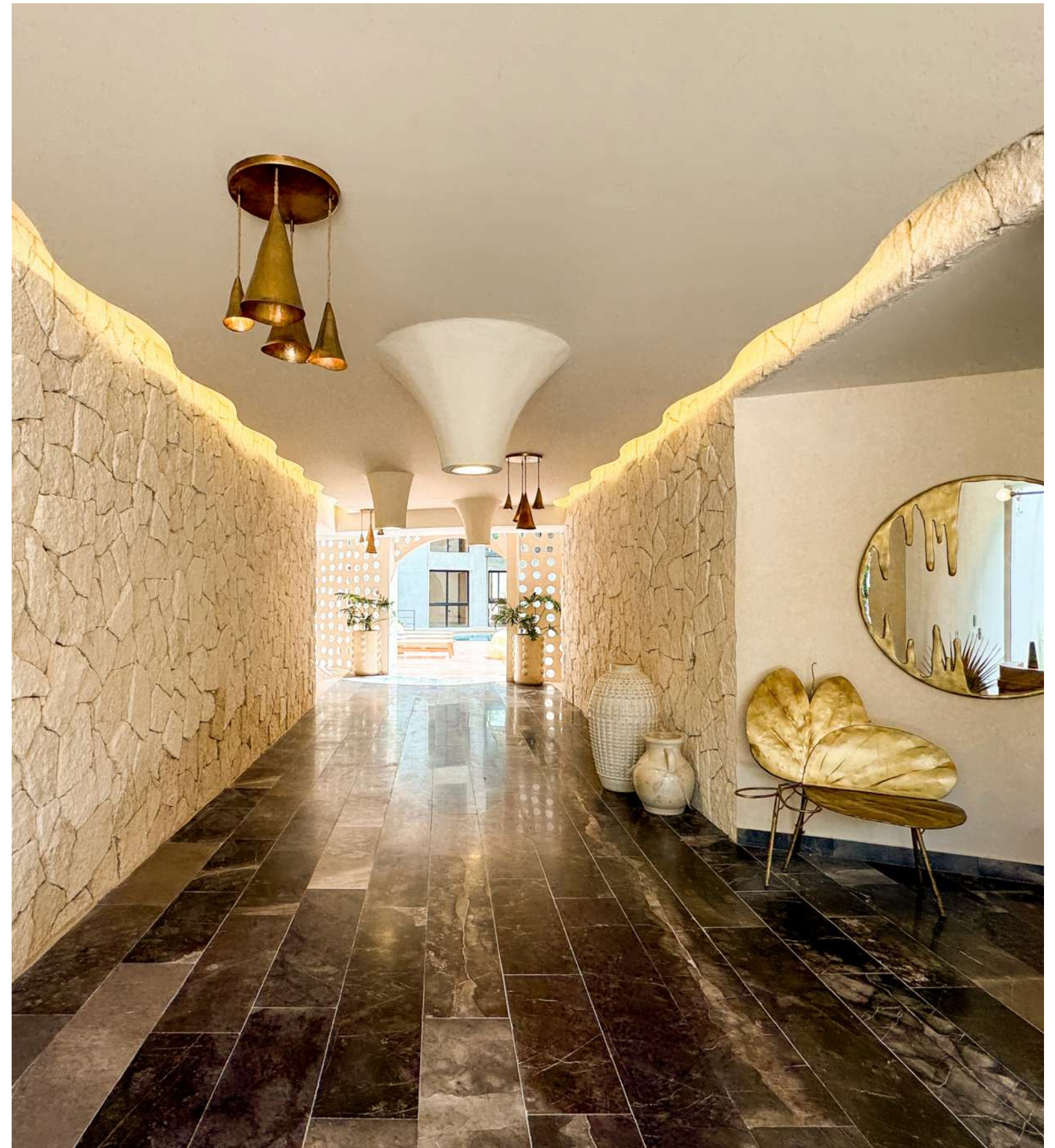


# MAYAN TRAIN

Launched in 2024

The Tren Maya opens the door to the wonders of the Yucatán Peninsula. Travel across the region in comfort and style, discovering its rich culture, history, and natural beauty like never before.







ONIRIC  
• TULUM •

## WHY ONIRIC?

- Immediate delivery** — *No presale risk*
- Secure title from day one** — *Invest with full confidence*
- Low-density living** — *Higher rental potential*
- Lifestyle & investment in one** — *Not just a property, but a vision*

**STEP INTO THE SURREAL!**

**DISCOVER ONIRIC TULUM**

