

toombs.team/428TerryCarter

For Sale

428 Terry Carter Cres

NEWMARKET, ONTARIO



COLDWELL BANKER
THE REAL ESTATE
CENTRE, BROKERAGE



**TOOMBS
TEAM**
REAL ESTATE GROUP

Property Overview

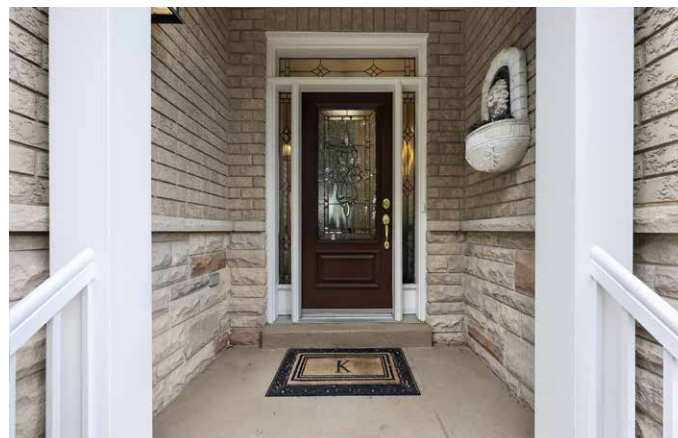
Beautifully appointed executive condominium townhome in one of Newmarket's most desirable communities. Offering 3 bedrooms, 4 bathrooms, and a fully finished walkout basement, this spacious residence is ideal for those seeking upscale, low-maintenance living without compromising on space or lifestyle.

The main level features hardwood floors through the principal rooms, elegant formal living spaces, and a cozy gas fireplace that creates a warm and inviting atmosphere for everyday living or entertaining. The thoughtfully finished lower level is flooded with natural light from oversized windows and includes a stunning rec room with custom built-in cabinetry, wet bar, electric fireplace, and walkout to an exclusive-use patio retreat.

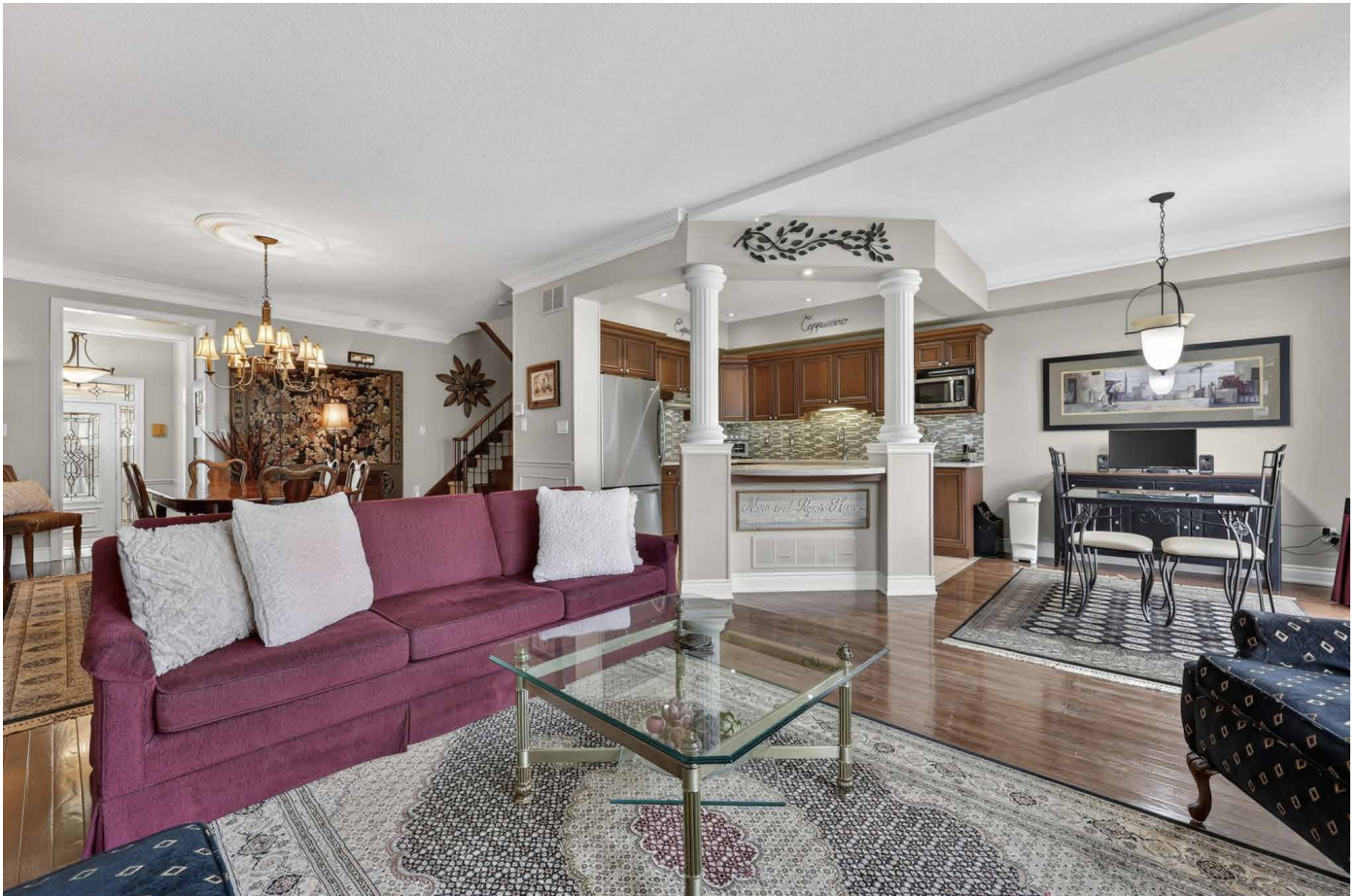
Designed with comfort and convenience in mind, this rare condominium townhome also offers a double-car garage and double-wide driveway — a standout feature rarely found in similar developments. Perfect for downsizers looking to remain in Newmarket while enjoying the benefits of condominium living, including exterior maintenance and carefree lock-and-leave convenience for those frequently travelling or spending time away.

Located in a prime central location just steps to Historic Main Street Newmarket, the GO Train, Davis Drive transit corridor, and all the amenities of Bayview Avenue and Leslie Street. Exceptional proximity to some of the area's top private schools including Pickering College, St. Andrew's College, and St. Anne's School makes this an outstanding lifestyle opportunity in the heart of Newmarket.

toombs.team/428TerryCarter

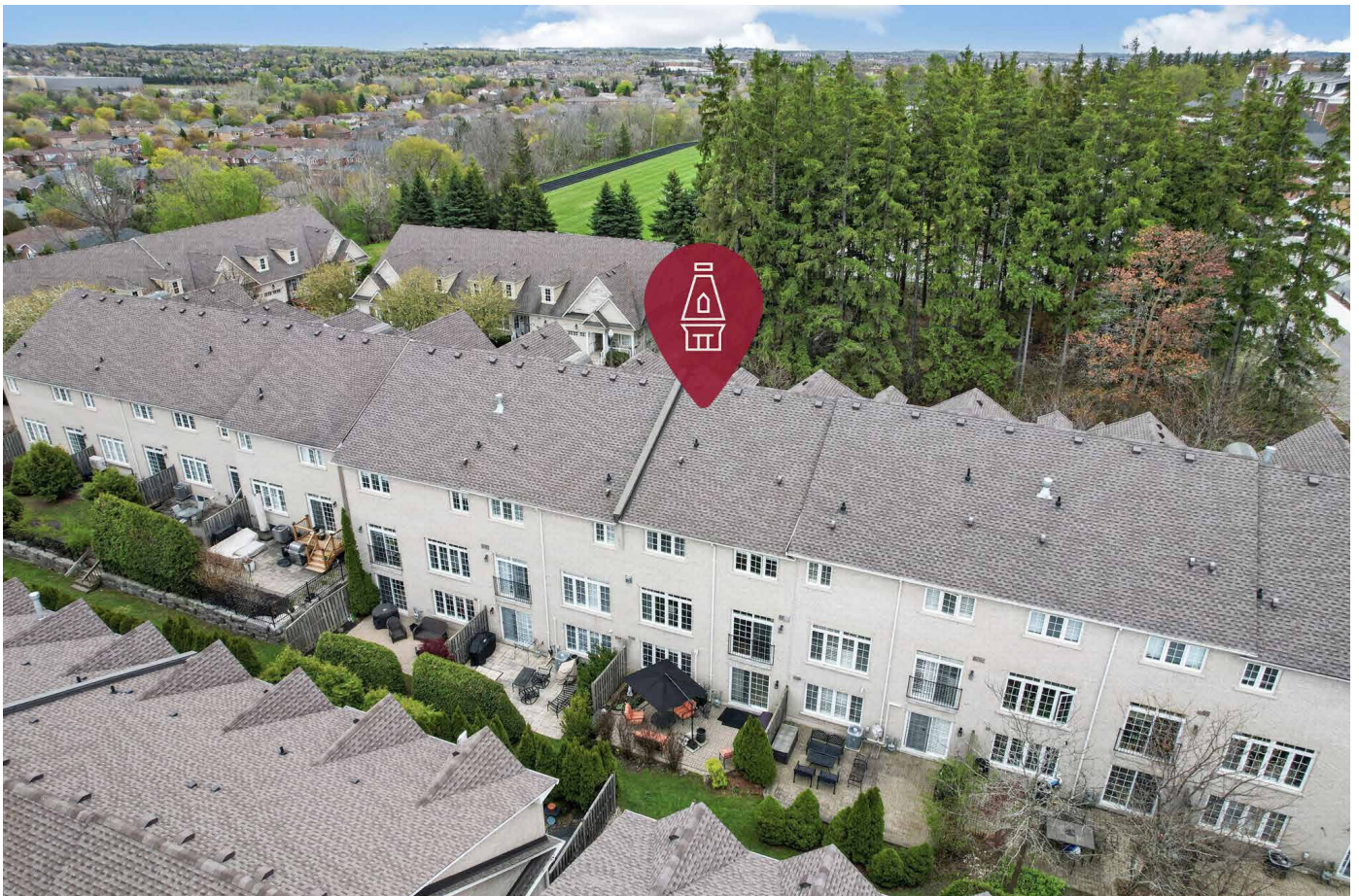














WHY YOU'LL LOVE IT

01

Luxury Low-Maintenance Lifestyle

Enjoy the space and comfort of a detached-style home with the convenience of condominium living. Ideal for downsizers or frequent travellers looking for carefree exterior maintenance in an exclusive executive community.

02

Exceptional Walkable Location

Steps to Historic Main Street Newmarket, the GO Train, Davis Drive transit, and close to Bayview & Leslie amenities. Also ideally situated near prestigious private schools including Pickering College, St. Andrew's College, and St. Anne's School.

03

Beautifully Finished Walkout Basement

Bright and inviting lower level featuring oversized windows, custom built-in cabinetry, wet bar, electric fireplace, and walkout to an exclusive-use patio — a perfect extension of the living space for entertaining or relaxing.

04

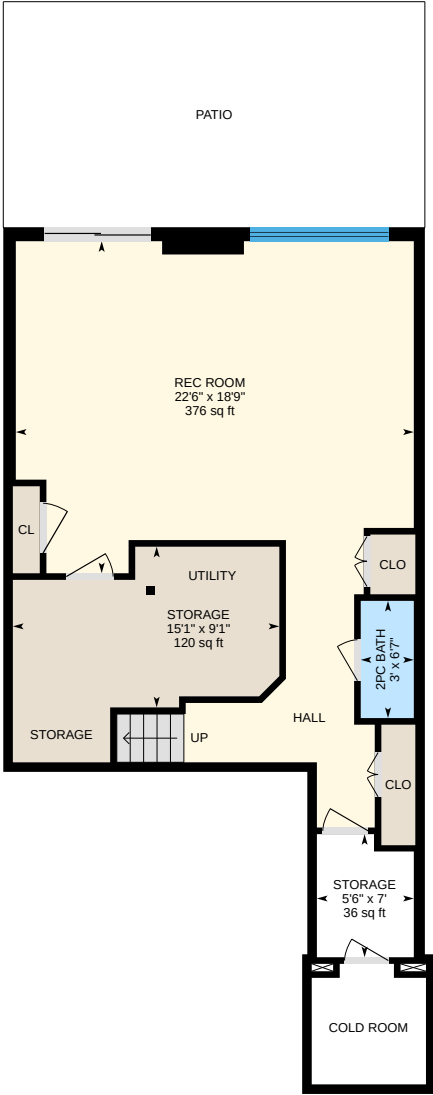
Rare Features & Extensive Recent Upgrades

Double-car garage and double-wide driveway rarely found in condominium townhomes, combined with major recent updates including furnace, A/C, hot water tank (owned), water softener (2024), roof shingles (2025), and professionally relaid patio (2025).

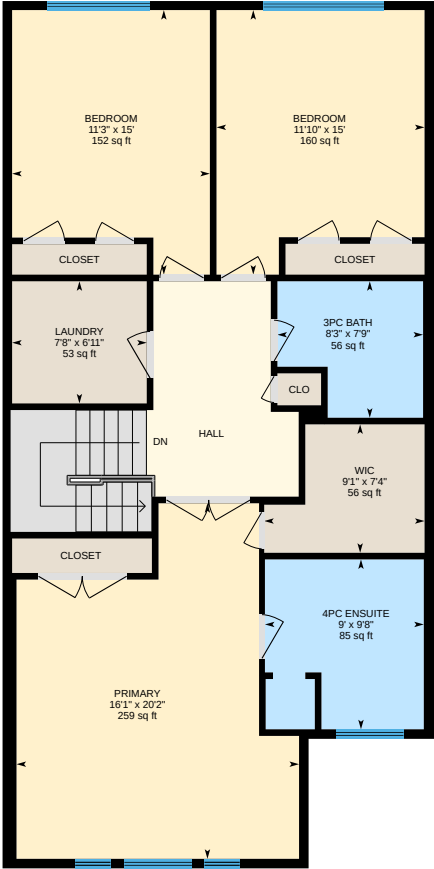


Floor Plans

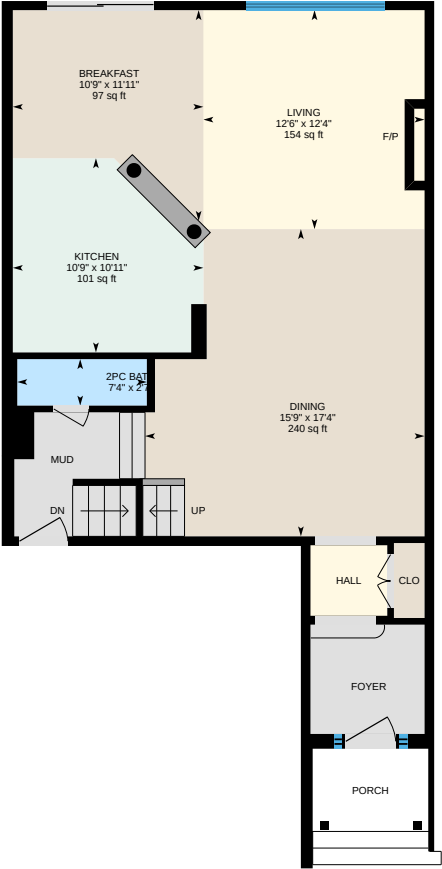
Basement



2nd Floor



Main Floor



All room dimensions and floor areas must be considered approximate and are subject to independent verification.

Newmarket

Local Area Report

Nestled in a prime Newmarket neighbourhood, 428 Terry Carter Crescent puts you near top-rated schools, scenic parks, convenient transit, and trusted healthcare.



SCHOOLS

With good assigned public schools very close to this home, your kids can thrive in the neighbourhood.



Nearby Schools

Prince Charles PS

Designated Catchment School
Grades PK to 8
684 Srigley St

Newmarket HS

Designated Catchment School
Grades 9 to 12
505 Pickering Crescent

LookDeeper

Mazo De La Roche PS

Designated Catchment School
Grades 2 to 8
860 Arnold Crescent

Huron Heights SS

Designated Catchment School
Grades 9 to 12
40 Huron Heights Dr

ÉS Norval-Morrisseau

Designated Catchment School
Grades 7 to 12
51 Wright St

PARKS & REC


This home is located in park heaven, with 3 parks and 15 recreation facilities within a 20 minute walk from this address.



 **College Manor Park**
705 College Manor Dr



5 mins

 **Wesley Brooks Conservation Area (Fairy Lake)**
384 Lorne Ave


7 mins

 **John Georgas Parkette**
679 Allan Ave



6 mins

FACILITIES WITHIN A 20 MINUTE WALK

- | | |
|--------------------|--------------------|
| 4 Playgrounds | 4 Ball Diamonds |
| 1 Rink | 2 Sports Fields |
| 1 Tennis Court | 1 Fishing Location |
| 1 Basketball Court | 5 Trails |

TRANSIT

Public transit is at this home's doorstep for easy travel around the city. The nearest rail transit stop is only a 19 minute walk away, and the nearest street transit stop is a 2 minute walk away.

 **Nearest Rail Transit Stop**
Newmarket GO


19 mins

 **Nearest Street Level Transit Stop**
Prospect St. @ Pearson St.


2 mins

SAFETY

With safety facilities in the area, help is always close by. Facilities near this home include a police station, a hospital, and a fire station within 2km.

 **Southlake Regional Health Centre**
596 Davis Dr

 **Fire Station**
984 Gorham St

 **Police Station**
240 Prospect Street



**TOOMBS
TEAM**

REAL ESTATE GROUP



COLDWELL BANKER

THE REAL ESTATE
CENTRE, BROKERAGE



Darcy Toombs

Broker & Team Leader

(289) 210-9556 (Cell) • (905) 252-8326 (Office)

Darcy@ToombsTeam.ca

Toombs Team Real Estate Group

Coldwell Banker The Real Estate Centre Inc. Brokerage

Copyright 2026 © Toombs Team Real Estate Group

This information may contain errors and omissions. Not intended to solicit buyers or sellers currently under contract with a brokerage.