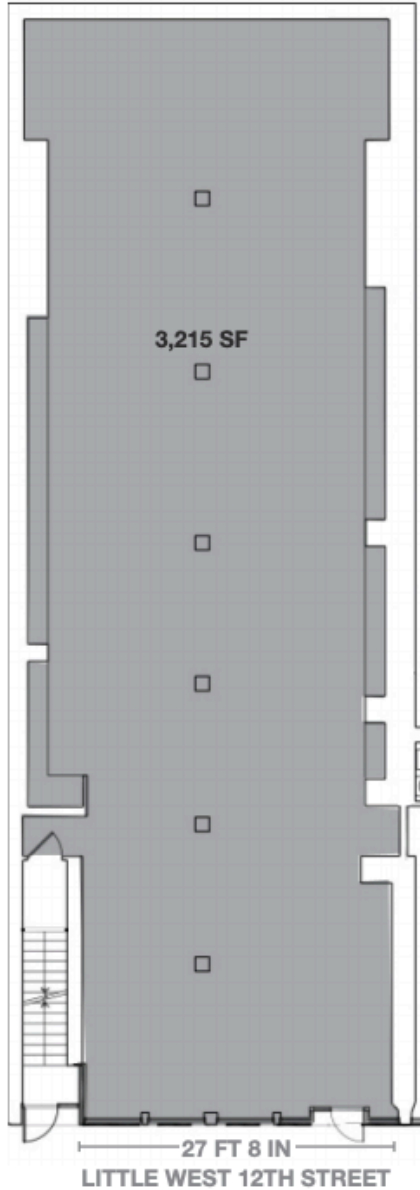


34 LITTLE WEST 12TH STREET

STOREFRONT 3,215 sq ft

LOWER LEVEL 850 sq ft



MEASUREMENTS

Windows to Dressing Rooms: 75'

Entrance width: 28'

Main space width: 33'

Ceiling height: 141"

Ceiling height to duct: 119"

(5) standard dressing rooms: 3' x 5' x 8'

(1) ADA dressing room: 5' x 8' x 8'

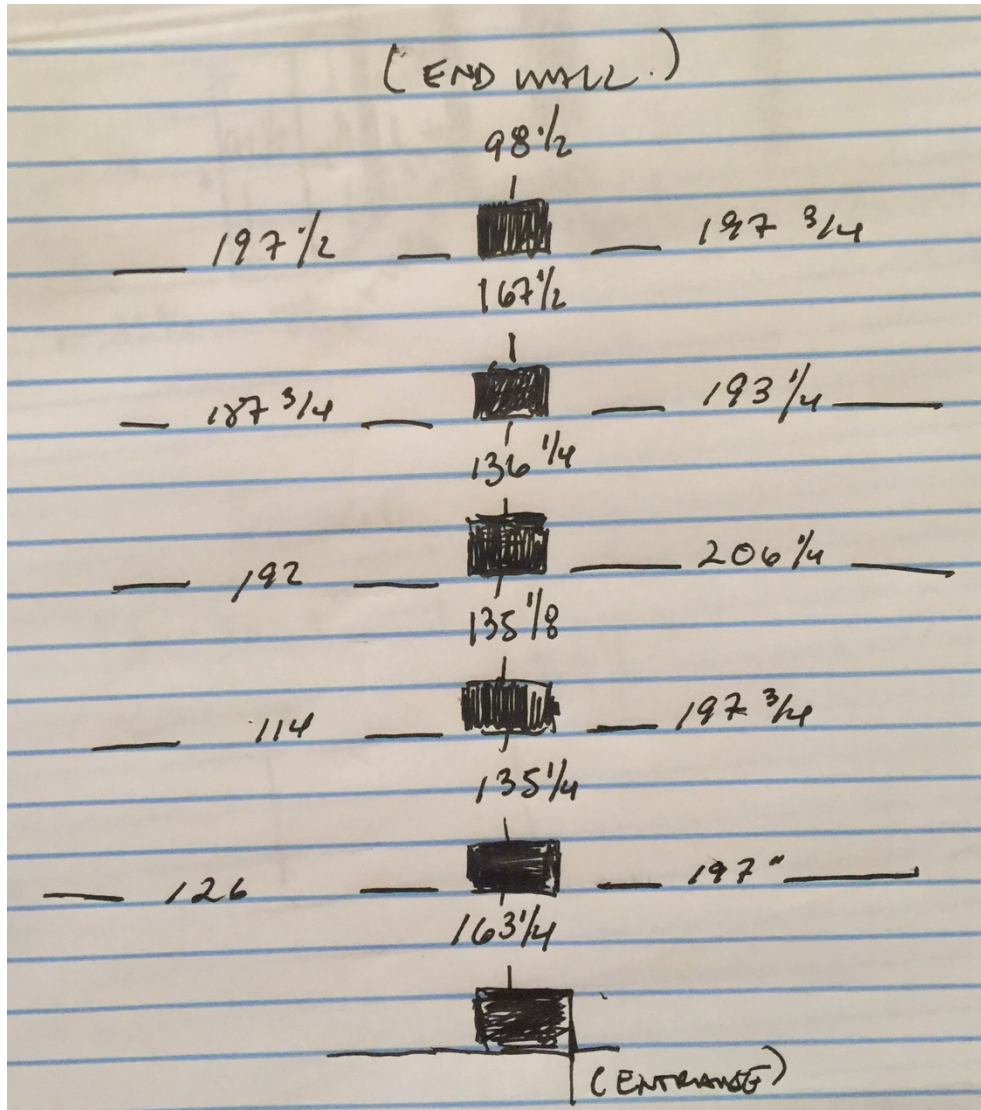
(1) Side closet: 1' x 8" x 5' x 8'

*East Back Room 187-1/2 x 178 x 106

*West Back Room 141-1/8 x 187-7/8 x 104-3/4

**These rooms not shown on this floor plan and can be used for back of house needs*

COLUMN MEASUREMENTS



FAÇADE WINDOW MEASUREMENTS

*Front door opening for load in is 33' 1/8"

