

Hood Q Highlights

35 Birchcliff Avenue

jenny
AND
shane

Schools

With excellent assigned and local public schools very close to this home, your kids will get a great education in the neighbourhood.



Birch Cliff Public School

Designated Catchment School
Grades PK to 8
1650 Kingston Rd

Birchmount Park Collegiate Institute

Designated Catchment School
Grades 9 to 12
3663 Danforth Ave

ÉS Michelle-O'Bonsawin

Designated Catchment School
Grades 7 to 10
24 Mountjoy Ave

ÉE Jeanne-Lajoie

Designated Catchment School
Grades PK to 6
150 Carnforth Rd

Collège français secondaire

Designated Catchment School
Grades 7 to 12
100 Carlton St

Other Local Schools

Danforth Collegiate and Technical Institute

Grades 9 to 12
800 Greenwood Ave

Kapapamahchakwew - Wandering Spirit School

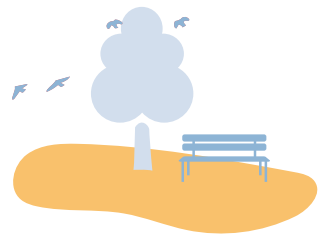
Grades PK to 12
16 Phin Ave

Broadlands Public School

Grades K to 5
106 Broadlands Blvd

Parks & Rec

This home is located in park heaven, with 4 parks and a long list of recreation facilities within a 20 minute walk from this address.



Birchmount Park & Scarborough Gardens Arena

93 Birchmount Rd / 4 minute walk



Birchmount Community Centre

93 Birchmount Rd / 6 minute walk



Harrison Properties

1845 Kingston Rd / 7 minute walk



Facilities Within A 20 Minute Walk

1 Playground	1 Community Centre
1 Pool	2 Splash Pads
1 Arena	1 Sports Court
1 Rink	1 Stadium
2 Tennis Courts	3 Trails
2 Ball Diamonds	
1 Sports Field	
1 Track	

Transit

Public transit is at this home's doorstep for easy travel around the city. The nearest street transit stop is only a minute walk away and the nearest rail transit stop is a 27 minute walk away.



Nearest Rail Transit Stop

Victoria Park Station



Nearest Street Level Transit Stop

Kingston Rd At Birchcliff Ave / < 1 minute walk

Safety

With safety facilities in the area, help is always close by. Facilities near this home include a fire station, a police station, and a hospital within 4.9km.



Toronto East Health Network - Michael Garron Hospital

825 Coxwell Ave



Fire Station

3600 Danforth Ave



Police Station

2222 Eglinton Ave E

Jenny Simon & Shane Little

Sales Representatives

JennyAndShane.ca  @JennyAndShane.ca

Sage Real Estate Ltd., Brokerage

2010 Yonge Street, Toronto, ON M4S 1Z9

HoodQ

Disclaimer: These materials have been prepared for design@sagerealestate.ca and are not intended to solicit buyers or sellers currently under contract with a brokerage. By accessing this information you have agreed to our terms of service, which are hereby incorporated by reference. This information may contain errors and omissions. You are not permitted to rely on the contents of this information and must take steps to independently verify its contents with the appropriate authorities (school boards, governments etc.). As a recipient of this information, you agree not to hold us, our licensors or the owners of the information liable for any damages, howsoever caused.