



# 439B CAMINO DEL MONTE SOL



2 Bedroom • 5 Bath • 3140 SF • \$1,395,000 • MLS# 202002846



## LIVING & DINING

⇨ Wood Floors ⇨ Exquisite Lighting ⇨ Gourmet Kitchen



# 439B CAMINO DEL MONTE SOL

2 Bedroom • 5 Bath • 3140 SF • \$1,395,000 • MLS# 202002846

Unique opportunity to own this 2 bedroom 5 bath Historic Eastside home in the former compound of American writer Mary Hunter Austin. Iconic Santa Fe features such as vigas and beams, decorative tiles, and kiva fireplaces - 6 in all. Wood floors and exquisite lighting throughout. A spacious grand living room abundant with natural light from the plentiful windows is perfect for entertaining. The gourmet kitchen is appointed with high end appliances, granite countertops, farmhouse sink and wine cooler. Both bedrooms are on the main level. The master bedroom is extra-large with a sitting/writing area. Upstairs offers flexible space as a studio, office, or extra guest room. The back portal is an idyllic place to unwind and enjoy the refreshing Santa Fe weather and views of Santa Fe ski basin. Landscaped grounds with drip sprinkler system, insulated windows and heated one car garage. Short term rentals with 6 night minimum are permitted. Outstanding location less than 4 blocks from the restaurants, art galleries and shops of Canyon Road.

DARLENE STREIT | 505.920.8001 | DSTREIT@DSTREIT.COM



## B E D R O O M S

↔ Extra Large Master Bedroom ↔ Back Portal



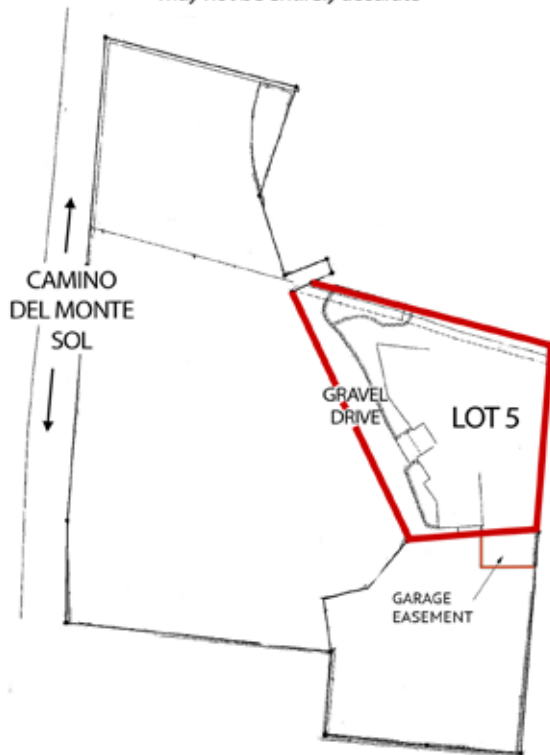
# DETAILS

- 2 Bedrooms
- Baths: 2 Full, 1 Three Quarter, 2 Half
- 3140 Sq. Ft.
- 0.23 Acre
- Adobe and possibly other materials, Frame, Stucco Construction \*
- Flat, Foam Roof
- 1 Garage Space
- 6 Fireplaces
- Wood, Tile Floors
- Gas Cooking
- Forced Air, Ductless (MiniSplit), Radiant In Floor Heating
- Central, Ductless Cooling
- City Sewer
- City Water, Shared Well for Irrigation
- Internet: Cable, DSL, Wireless
- HOA Fees: \$1170 Per Quarter
- HOA Fees Cover: Community Area Maintenance, Security, Snow Removal
- Insulated Windows
- Landscaped
- Drip/Sprinkler System
- Security System

*\*Buyer to Verify*

## 439B CAMINO DEL MONTE SOL - PLAT

This depiction is for illustration purposes and may not be entirely accurate



**DARLENE STREIT**

SANTA FE REAL ESTATE PROPERTY



**DARLENE STREIT**

505.920.8001 • [dstreit@dstreit.com](mailto:dstreit@dstreit.com)

Office: 417 E. Palace Avenue  
Santa Fe NM 87501

[SantaFeRealEstateProperty.com](http://SantaFeRealEstateProperty.com)

[DarleneStreit.com](http://DarleneStreit.com)

[SantaFeLuxuryHomesandLand.com](http://SantaFeLuxuryHomesandLand.com)



View  
Listing  
Online

© Sotheby's International Realty, Inc. All rights reserved. Sotheby's International Realty® is a registered trademark. This material is based upon information which we consider reliable but because it has been supplied by third parties, we cannot represent that it is accurate or complete and it should not be relied upon as such. This offering is subject to errors, omissions, changes including price or withdrawal without notice. If your property is listed with a real estate broker, please disregard. It is not our intention to solicit the offerings of other real estate brokers. We are happy to work with them and cooperate fully. Operated by Sotheby's International Realty, Inc. Real estate agents affiliated with Sotheby's International Realty, Inc. are independent contractor sales associates and are not employees of Sotheby's International Realty, Inc. Equal Housing Opportunity. Sotheby's International Realty, 326 Grant Ave, Santa Fe, NM 87501, 505-988-2533.

**Sotheby's**  
INTERNATIONAL REALTY