



523 E ALAMEDA



4 Bedroom • 4 Bath • 2,334 SF • \$1,625,000 • MLS# 202102159



LIVING & DINING

↻ Dining Room ↻ Original Wood Floors ↻ French Doors



523 E ALAMEDA

4 Bedroom • 4 Bath • 2,334 SF • \$1,625,000 • MLS# 202102159

Elegant historic 4 bedroom 4 bath New Mexico Territorial style home with casita in the Historic East-side. The house is perfectly sited at the top of a generous semi-circular driveway for easy in and out access. Thoughtful design features such as skylights, built-in cupboards and display cabinets, and original wood floors. Spacious living room with brick-faced fireplace and floor-to-ceiling double French doors. Dining room is open to updated (2018) kitchen with new hammered finish granite countertops, Blanco sink and faucet, JennAir induction range and Bosch appliances including an in-drawer microwave. Split bedroom plan for privacy. A separate sitting room offers flex space as a third bedroom. The casita has slate floors in a large living/ kitchen area and 2 bedrooms (one ensuite), 2 baths, laundry, and a private walled patio. Expansive grounds with multiple spaces--lawn, meditative garden, portal, orchard, bocci, and dry stream bed. An ideal home for entertaining. Lots of recent improvements such as mini-split system added in the main house (2021) and casita (2019), all new high desert and low maintenance landscaping and irrigation (2021), new on demand hot water heater in casita (2021) and new carport (2020). Conveniently located close to the restaurants/galleries on Canyon Road and to the historic Santa Fe Plaza.

DARLENE STREIT | 505.920.8001 | DSTREIT@DSTREIT.COM



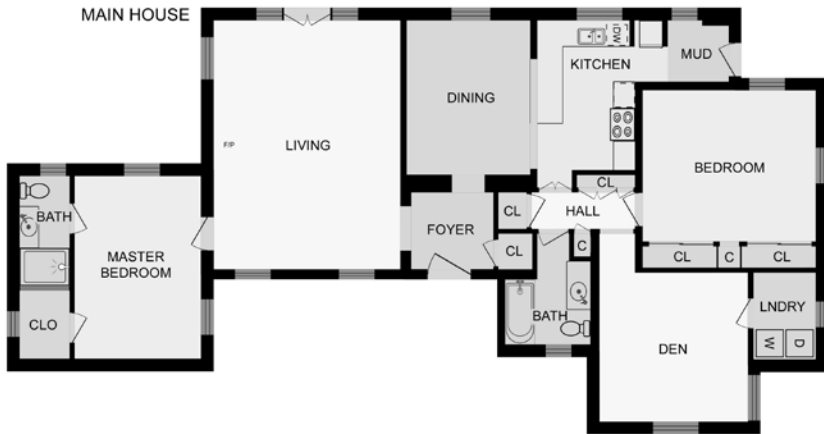
B E D R O O M S

↔ Split Bedroom Plan ↔ Casita



DETAILS

- 4 Bedrooms
 - Baths: 2 Full, 2 Three Quarter
 - Main House 1543 SF
Casita 791 SF
 - .3435 Acre
 - Wood, Tile Floors
 - Main House Built in 1946
Casita Built in 2001
 - Block, Frame, Pentile Construction *
 - Flat Roof
 - Carport
 - 2 Fireplaces
 - Electric, Gas Cooking
 - Hot Water Baseboard, Ductless
(MiniSplit), Gas, Hot Water, Gas Stove,
Radiant In Floor Heating
 - Refrigerator, Ductless Cooling
 - City Sewer
 - City Water
 - Internet: Cable, DSL
 - Insulated Windows
 - Landscaped
 - Security System
- *Buyer to Verify



Above floor plan provided by iGuide and may not be entirely accurate.

Plat depiction is for illustration purposes and may not be entirely accurate.



DARLENE STREIT

SANTA FE REAL ESTATE PROPERTY



DARLENE STREIT
505.920.8001 • dstreit@dstreit.com
 Office: 417 E. Palace Avenue
 Santa Fe NM 87501

SantaFeRealEstateProperty.com

DarleneStreit.com

SantaFeLuxuryHomesandLand.com



View
Listing
Online

© Sotheby's International Realty, Inc. All rights reserved. Sotheby's International Realty® is a registered trademark. This material is based upon information which we consider reliable but because it has been supplied by third parties, we cannot represent that it is accurate or complete and it should not be relied upon as such. This offering is subject to errors, omissions, changes including price or withdrawal without notice. If your property is listed with a real estate broker, please disregard. It is not our intention to solicit the offerings of other real estate brokers. We are happy to work with them and cooperate fully. Operated by Sotheby's International Realty, Inc. Real estate agents affiliated with Sotheby's International Realty, Inc. are independent contractor sales associates and are not employees of Sotheby's International Realty, Inc. Equal Housing Opportunity. Sotheby's International Realty, 326 Grant Ave, Santa Fe, NM 87501, 505-988-2533.

Sotheby's
INTERNATIONAL REALTY