



# 4 STONEGATE CIRCLE



3 Bedroom • 3 Bath • 4133 SF • \$1,595,000 • MLS# 202004562



## LIVING & DINING

⇨ Limestone Flooring ⇨ Formal Dining Room ⇨ Gourmet Kitchen



# 4 STONEGATE CIRCLE

3 Bedroom • 3 Bath • 4133 SF • \$1,595,000 • MLS# 202004562

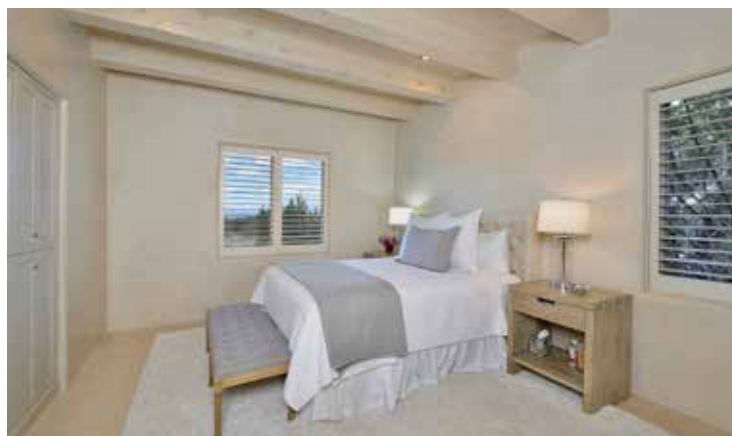
**3** bedroom 3 bath soft contemporary home by Kim Dressel in Las Campanas on 2.1 +/- acres with sunrise and sunset mountain views. Light, neutral hues — diamond plaster walls, cream-colored ceiling beams, and limestone flooring—create the perfect palette for furnishings or art and provide a dramatic backdrop for entertaining. Formal living and dining rooms, an impeccably appointed kitchen, a large media room, breakfast area with morning portal, and separate master and guest suites are among the highlights. The gourmet kitchen features a double-oven Wolf range with 6 burners, Sub-Zero refrigerator, work island, walk-in pantry as well as a butler's pantry with a farmhouse sink. Luxurious master suite with fireplace, sitting area, master portal and courtyard, and a spa-like bathroom with dual walk-in closets, vanities and toilet areas, walk-in shower, soaking tub, and outdoor hot tub/spa. Grand portal off the main living areas with fireplace, built-in outdoor grill and landscaped courtyard. Ideal for large-scale al fresco dining! Convenient location with easy access to all the exceptional recreational, cultural, creative, and culinary amenities in Santa Fe.

DARLENE STREIT | 505.920.8001 | DSTREIT@DSTREIT.COM



## B E D R O O M S

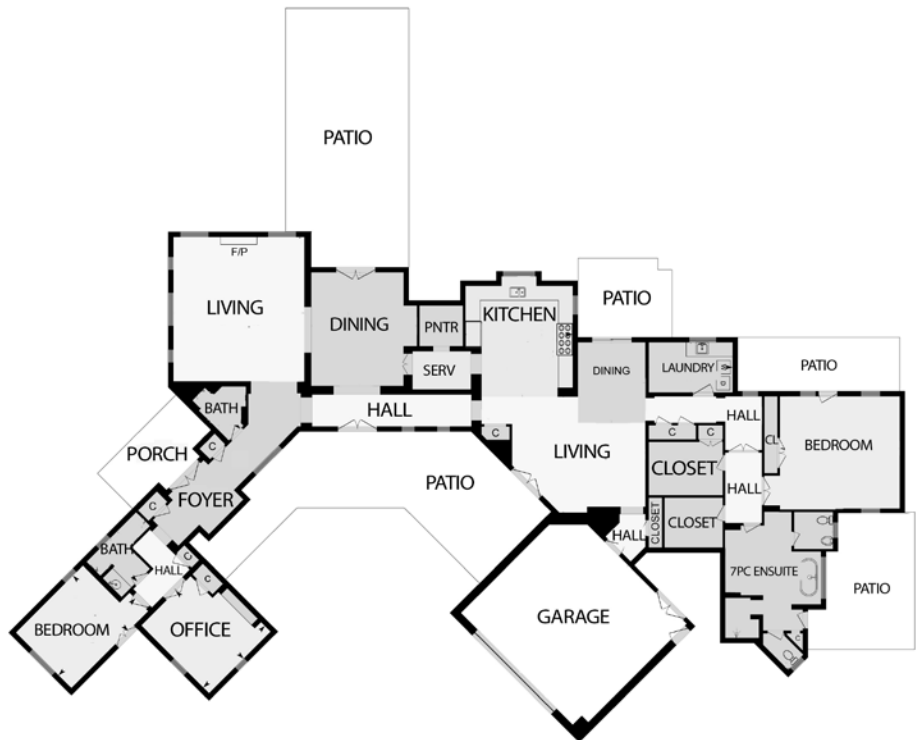
↻ Luxurious Master Suite ↻ Soaking Tub ↻ Spa-Like Bathroom



# DETAILS

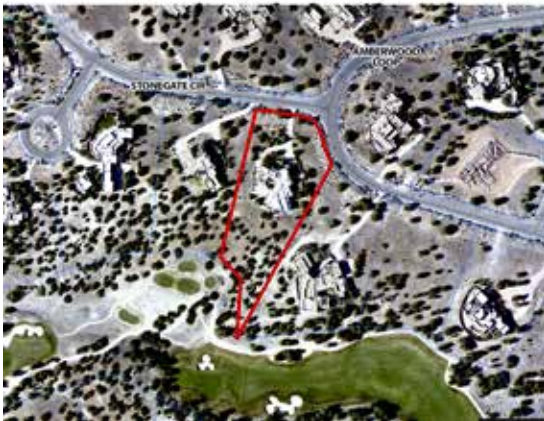
- 3 Bedrooms
- Baths: 2 Full, 1 Half
- 4133 SF
- 2.10 Acres
- Built in 2005
- Block, Stucco Construction \*
- Flat, Foam, Tar & Gravel Roof
- 3 Garage Spaces
- 4 Fireplaces
- Electric, Gas Cooking
- Electric, Gas, Hot Water, Radiant In Floor Heating
- Refrigerator, Central Cooling
- Community Sewer
- Community Water
- Internet: Cable, DSL, Satellite, Wireless
- HOA Fees: \$2935 Per Year
- HOA Fees Cover: Community Area & Road Maintenance, Security
- Hot Tub/Spa
- Insulated Windows
- Landscaped
- Security System
- Drip/Sprinkler System
- Water Purification & Softener

\*Buyer to Verify



*Floor Plan measurements may not be entirely accurate.*

*Plat depiction is for illustration purposes and may not be entirely accurate.*



**DARLENE STREIT**

SANTA FE REAL ESTATE PROPERTY



**DARLENE STREIT**

505.920.8001 • dstreit@dstreit.com

Office: 417 E. Palace Avenue

Santa Fe NM 87501

SantaFeRealEstateProperty.com

DarleneStreit.com

SantaFeLuxuryHomesandLand.com



View  
Listing  
Online

© Sotheby's International Realty, Inc. All rights reserved. Sotheby's International Realty® is a registered trademark. This material is based upon information which we consider reliable but because it has been supplied by third parties, we cannot represent that it is accurate or complete and it should not be relied upon as such. This offering is subject to errors, omissions, changes including price or withdrawal without notice. If your property is listed with a real estate broker, please disregard. It is not our intention to solicit the offerings of other real estate brokers. We are happy to work with them and cooperate fully. Operated by Sotheby's International Realty, Inc. Real estate agents affiliated with Sotheby's International Realty, Inc. are independent contractor sales associates and are not employees of Sotheby's International Realty, Inc. Equal Housing Opportunity. Sotheby's International Realty, 326 Grant Ave, Santa Fe, NM 87501, 505-988-2533.

**Sotheby's**  
INTERNATIONAL REALTY