



2 ARTIFACT PL

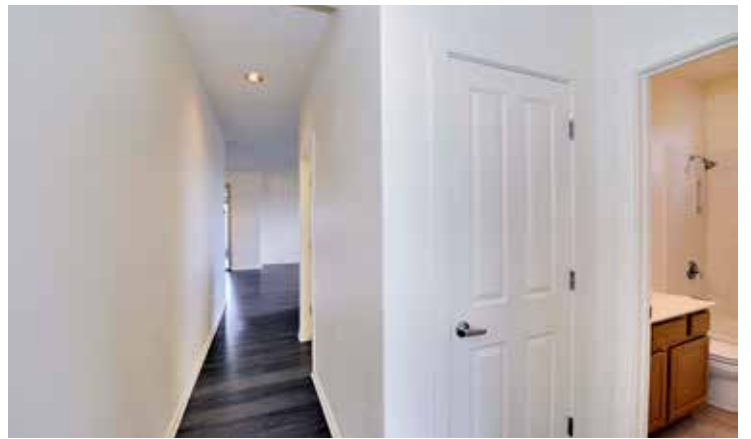


3 Bedroom • 2 Bath • 1607 SF • \$435,000 • MLS# 202004681



LIVING & DINING

⇒ Open Design ⇒ Kiva Fireplace ⇒ Stainless Steel Kitchen Appliances



2 ARTIFACT PL

3 Bedroom • 2 Bath • 1607 SF • \$435,000 • MLS# 202004681

3 bedroom 2 bath single level Pueblo style home in Rancho Viejo. Open living and dining with kiva and recently installed engineered wood floors. Kitchen is appointed with stainless steel appliances and track lighting. Split bedroom plan. Master bedroom has ensuite bath with a soaking tub, separate shower, and walk-in closet. Guest bedrooms offer flex space for a media room, office or studio. Covered portal and enclosed side yard. 2-car attached direct entry garage. New stucco and TPO roof in 2020. The neighborhood of Rancho Viejo has more than 12 miles of walking trails, community parks, and paved streets. Located close to Windmill Ridge Community Park, Santa Fe Community College, and The Pantry Dos with easy access to I-25 and downtown Santa Fe.

DARLENE STREIT | 505.920.8001 | DSTREIT@DSTREIT.COM



B E D R O O M S

↔ Master Ensuite Bath ↔ Covered Portal ↔ Walk-In Closet



DETAILS

- 3 Bedrooms
- 2 Full Baths
- 1607 SF
- 0.17 Acre
- Built in 2001
- Frame, Stucco Construction *
- Flat, Membrane Roof
- 2 Garage Spaces
- 1 Fireplace
- Gas Cooking
- Radiant In Floor Heating
- Evaporative, Central Cooling
- Community Sewer
- County Water
- Internet: Cable, DSL
- HOA Fees: \$120 Per Month
- HOA Fees Cover: Community Area & Road Maintenance
- Insulated Windows
- Drip/Sprinkler System
- *Buyer to Verify



Above measurements provided by iGuide and may not be entirely accurate.

Plat depiction is for illustration purposes and may not be entirely accurate.



DARLENE STREIT

SANTA FE REAL ESTATE PROPERTY



DARLENE STREIT
 505.920.8001 • dstreit@dstreit.com
 Office: 417 E. Palace Avenue
 Santa Fe NM 87501

SantaFeRealEstateProperty.com
 DarleneStreit.com
 SantaFeLuxuryHomesandLand.com



View
Listing
Online

© Sotheby's International Realty, Inc. All rights reserved. Sotheby's International Realty® is a registered trademark. This material is based upon information which we consider reliable but because it has been supplied by third parties, we cannot represent that it is accurate or complete and it should not be relied upon as such. This offering is subject to errors, omissions, changes including price or withdrawal without notice. If your property is listed with a real estate broker, please disregard. It is not our intention to solicit the offerings of other real estate brokers. We are happy to work with them and cooperate fully. Operated by Sotheby's International Realty, Inc. Real estate agents affiliated with Sotheby's International Realty, Inc. are independent contractor sales associates and are not employees of Sotheby's International Realty, Inc. Equal Housing Opportunity. Sotheby's International Realty, 326 Grant Ave, Santa Fe, NM 87501, 505-988-2533.

Sotheby's
INTERNATIONAL REALTY