



33 CRESTA PEQUENA



FEATURES

- Beautiful Wooded Lot
- Amazing Views

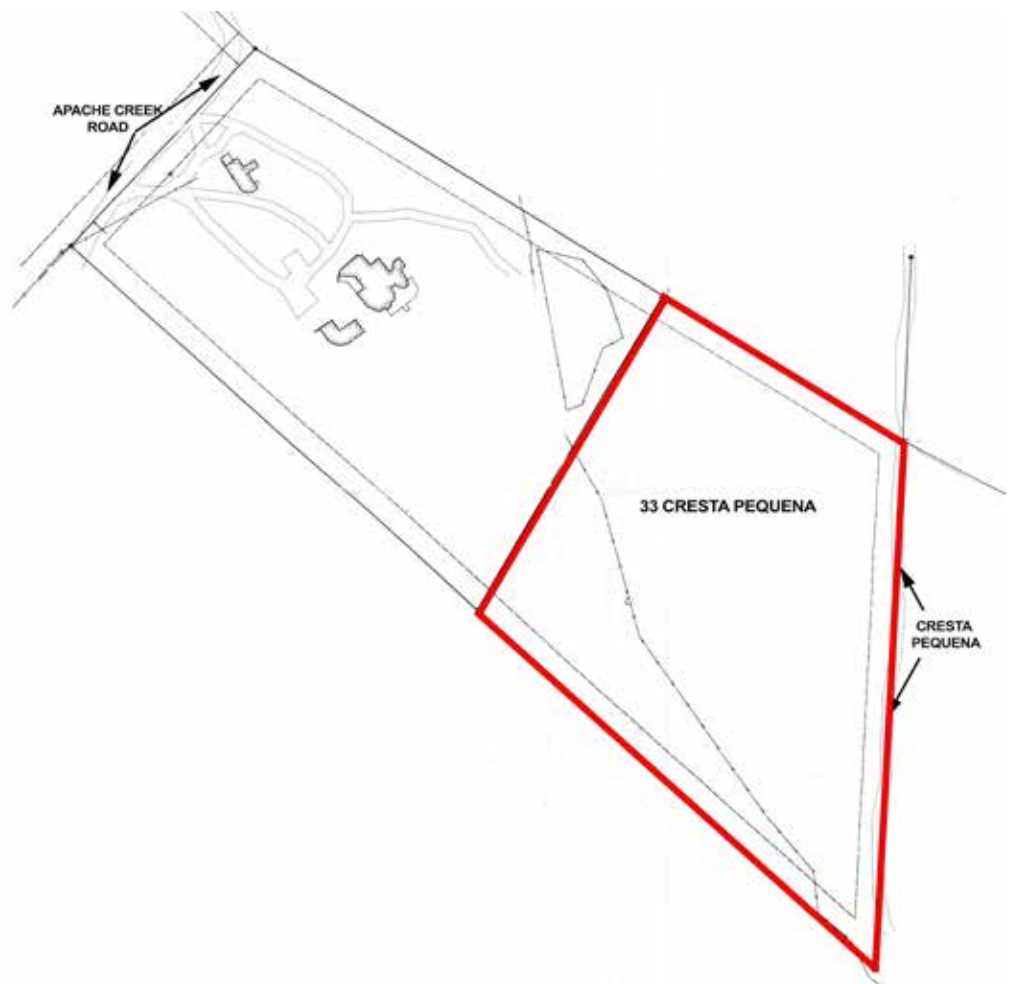


33 CRESTA PEQUENA

4.30 Acres • \$107,900 • MLS# 202100178

Beautiful, gently sloping and wooded lot. A home can be situated to take advantage of the panoramic views as well as the flat arroyo at the bottom of the property. There is an abundance of mature juniper, pinon and some cedar. Plenty of space for gardens, orchards, and outbuildings. Easy access, 25 minutes to Santa Fe, 10 minutes to Eldorado shopping. No HOA.

- 4.30 Acres
- Wooded
- Mountain Property
- Dirt Access Road
- Septic Required
- Well Required



DARLENE STREIT

SANTA FE REAL ESTATE PROPERTY



DARLENE STREIT
505.920.8001 • dstreit@dstreit.com
Office: 417 E. Palace Avenue
Santa Fe NM 87501

SantaFeRealEstateProperty.com

DarleneStreit.com

SantaFeLuxuryHomesandLand.com



View
Listing
Online

© Sotheby's International Realty, Inc. All rights reserved. Sotheby's International Realty® is a registered trademark. This material is based upon information which we consider reliable but because it has been supplied by third parties, we cannot represent that it is accurate or complete and it should not be relied upon as such. This offering is subject to errors, omissions, changes including price or withdrawal without notice. If your property is listed with a real estate broker, please disregard. It is not our intention to solicit the offerings of other real estate brokers. We are happy to work with them and cooperate fully. Operated by Sotheby's International Realty, Inc. Real estate agents affiliated with Sotheby's International Realty, Inc. are independent contractor sales associates and are not employees of Sotheby's International Realty, Inc. Equal Housing Opportunity. Sotheby's International Realty, 326 Grant Ave, Santa Fe, NM 87501, 505-988-2533.

Sotheby's
INTERNATIONAL REALTY