



4 VIA SECUNDA



3 Bedroom • 2.5 Bath • 1,849 SF • \$775,000 • MLS# 202104032



LIVING & DINING

⇒ Open Floor Plan ⇒ Chef's Kitchen



4 VIA SECUNDA

3 Bedroom • 2.5 Bath • 1,849 SF • \$775,000 • MLS# 202104032

This 3-bedroom 2.5 bath Pueblo style contemporary home located in the Tessera Community offers magnificent views of the Sangre de Cristo mountains. Open floor plan has a nice flow from the living, dining and kitchen spaces, all which are lined with large windows to capture the views. The living area has a corner kiva for chilly days and nights. The chef's kitchen is appointed with Bosch appliances, Caesarstone counters and a large wrap around breakfast bar with space for seating. The roomy master suite, with private access to a patio, has a well-appointed ensuite bathroom with dual vanities, walk-in stone tile-lined shower, water closet and linen storage. There are 2 additional bedrooms, one of which can be used as an office. In addition, there is laundry/utility room with a generous sink. Hunter Douglas shades and top/down/bottom/up blinds throughout. Also the Kitchen pantry and bedroom closets were upgraded with industrial Metro shelving and Elfa /Decor closet system. Enjoy outdoor entertaining on the patio overlooking the mountains in the distance. Special features include 3-car garage, insulated windows, drip irrigation system, and green features such as Energy Star appliances, solar photovoltaic (electric), low flow fixtures and xeriscaping. Walking trails wind through the Tessera neighborhood and the La Tierra Trail System is a mile away. Convenient location just minutes from downtown Santa Fe with easy access to I-25 and Los Alamos.

DARLENE STREIT | 505.920.8001 | DSTREIT@DSTREIT.COM



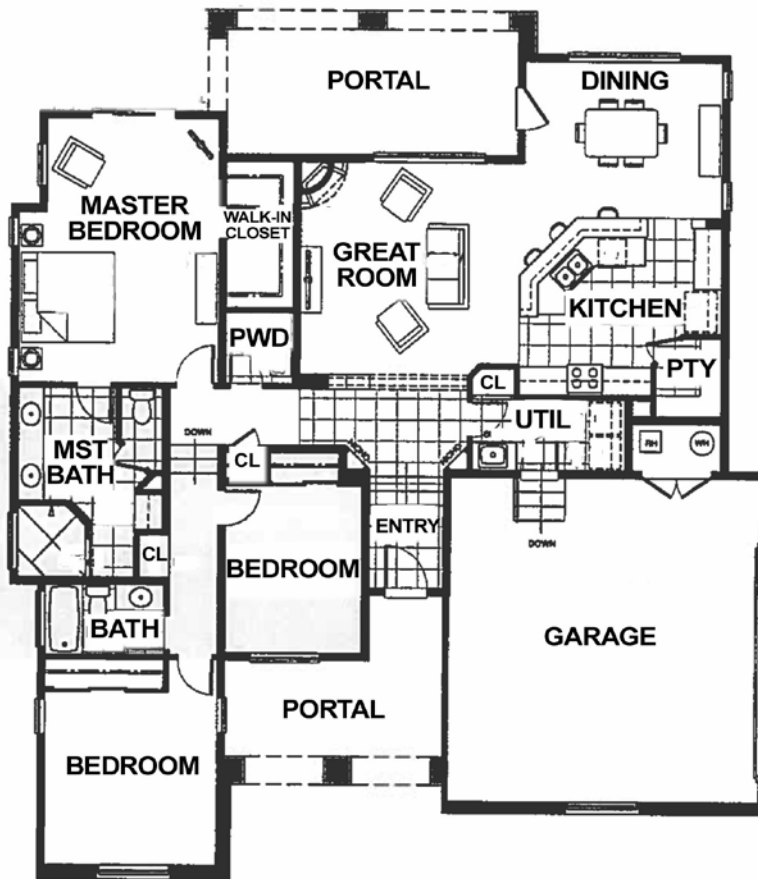
B E D R O O M S

↔ Large Master Suite ↔ Private Patio



DETAILS

- 3 Bedrooms
- Baths: 1 Full, 1 Three Quarter, 1 Half
- 1849 SF
- 0.35 Acre
- Built in 2017
- Engineered Wood, Carpet, Tile Floors
- Frame, Stucco Construction *
- Flat, Modified Bitumen Roof
- 3 Garage Spaces
- 1 Fireplace
- Gas Cooking
- Active Solar, Forced Air, Gas, Radiant In Floor Heating
- Refrigerator, Central Cooling
- Community Sewer
- County Water
- Internet: Cable
- HOA Fees: From 2020, \$1000 Per Year, Plus \$400 Per Year for Sewer Co-op
- HOA Fees Cover: Community Area & Road Maintenance
- Insulated Windows
- Drip/Sprinkler System
- Xeriscaped
- EnergyStar Appliances, HERS Rated
- Low Flow Fixtures
- Solar Photovoltaic
- Recirc Pump for Hot Water



Floor plan is for illustration purposes and may not be entirely accurate.

Plat depiction is for illustration purposes and may not be entirely accurate.



DARLENE STREIT

SANTA FE REAL ESTATE PROPERTY



DARLENE STREIT
 505.920.8001 • dstreit@dstreit.com
 Office: 417 E. Palace Avenue
 Santa Fe NM 87501

SantaFeRealEstateProperty.com

DarleneStreit.com

SantaFeLuxuryHomesandLand.com



View
Listing
Online

© Sotheby's International Realty, Inc. All rights reserved. Sotheby's International Realty® is a registered trademark. This material is based upon information which we consider reliable but because it has been supplied by third parties, we cannot represent that it is accurate or complete and it should not be relied upon as such. This offering is subject to errors, omissions, changes including price or withdrawal without notice. If your property is listed with a real estate broker, please disregard. It is not our intention to solicit the offerings of other real estate brokers. We are happy to work with them and cooperate fully. Operated by Sotheby's International Realty, Inc. Real estate agents affiliated with Sotheby's International Realty, Inc. are independent contractor sales associates and are not employees of Sotheby's International Realty, Inc. Equal Housing Opportunity. Sotheby's International Realty, 326 Grant Ave, Santa Fe, NM 87501, 505-988-2533.

Sotheby's
INTERNATIONAL REALTY