



# 1666 CERRO GORDO



2 Bedroom • 2.5 Bath • 3,355 SF • \$2,200,000 • MLS# 202103784



## LIVING & DINING

⇒ Towering Ceilings ⇒ Chef's Kitchen



# 1666 CERRO GORDO

2 Bedroom • 2.5 Bath • 3,355 SF • \$2,200,000 • MLS# 202103784

A rare offering of Old Santa Fe charm, stunning 2 bedroom 2.5 bath estate on almost 2 gorgeous acres bordering the Santa Fe River plus an active acequia. With an abstract dating back to 1879 and a storied history including beams from the old St. Francis Cathedral, adobe construction, a lush pastoral setting plus the creative tale of the Santa Fe life of artist Carole Laroche, this stunning Cerro Gordo property is unsurpassed in all of Santa Fe. The main house has towering ceilings, large living spaces, and the living area where Carole Laroche painted her masterpieces, which are treasured worldwide. The chef's kitchen is appointed with warm wood cabinetry, a Sub-Zero refrigerator, 6 burner range and a center island with a butcher block countertop. The master bedroom has a sitting area. A separate den offers flex space as a studio, office or third bedroom. Attached and accessible through the laundry area is a guest suite, providing privacy and a separate kitchen, sunroom, bedroom, bath, and large living space. A bonus feature is the unheated restored rock garage which could be used as a studio or for storage. There is also a waterproofed garden shed, ample parking, and incredible views. Located in the Historic Eastside close to The Santa Fe Plaza, Museum Hill and Canyon Road.

DARLENE STREIT | 505.920.8001 | DSTREIT@DSTREIT.COM



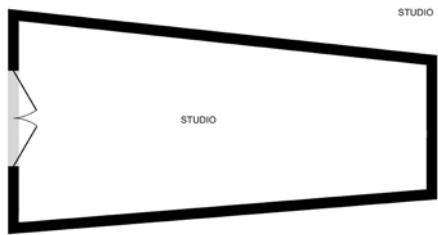
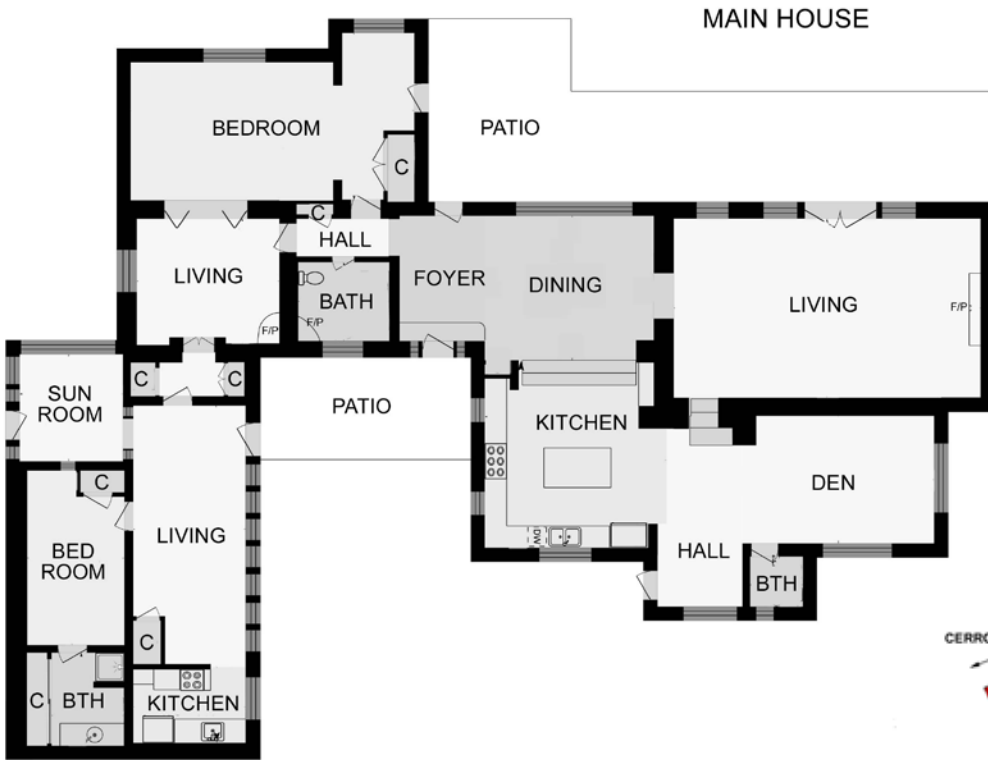
## B E D R O O M S

↻ Separate Den ↻ Master Bedroom Sitting Area



# DETAILS

- 2 Bedrooms
  - Baths: 1 Full, 1 Three Quarter, 1 Half
  - 3355 SF
  - 1.91 Acres
  - Built in 1850
  - Wood, Tile, Flagstone, Brick Floors
  - Adobe and possibly other materials Construction \*
  - Flat Roof
  - 7 Off Street Parking Spaces
  - 3 Fireplaces
  - Gas Cooking
  - Forced Air, Radiant In Floor Heating
  - Septic
  - City Water
  - Internet: Cable, DSL
  - Insulated Windows
  - Landscaped
- \*Buyer to Verify



Above floor plan provided by iGuide and may not be entirely accurate.

Plat depiction is for illustration purposes and may not be entirely accurate.

**DARLENE STREIT**

SANTA FE REAL ESTATE PROPERTY



**DARLENE STREIT**  
 505.920.8001 • dstreit@dstreit.com  
 Office: 417 E. Palace Avenue  
 Santa Fe NM 87501

SantaFeRealEstateProperty.com  
 DarleneStreit.com  
 SantaFeLuxuryHomesandLand.com



View Listing Online

© Sotheby's International Realty, Inc. All rights reserved. Sotheby's International Realty® is a registered trademark. This material is based upon information which we consider reliable but because it has been supplied by third parties, we cannot represent that it is accurate or complete and it should not be relied upon as such. This offering is subject to errors, omissions, changes including price or withdrawal without notice. If your property is listed with a real estate broker, please disregard. It is not our intention to solicit the offerings of other real estate brokers. We are happy to work with them and cooperate fully. Operated by Sotheby's International Realty, Inc. Real estate agents affiliated with Sotheby's International Realty, Inc. are independent contractor sales associates and are not employees of Sotheby's International Realty, Inc. Equal Housing Opportunity. Sotheby's International Realty, 326 Grant Ave, Santa Fe, NM 87501, 505-988-2533.

**Sotheby's**  
 INTERNATIONAL REALTY