



3112 VISTA SANDIA



3 Bedroom • 3 Bath • 3,425 SF • \$1,100,000 • MLS #202102264



LIVING & DINING

⇒ Formal Living Room ⇒ Breakfast Bar ⇒ Saltillo Tile Floors



3112 VISTA SANDIA

3 Bedroom • 3 Bath • 3,425 SF • \$1,100,000 • MLS #202102264

3 bedroom 2.5 bath custom home on 2.3 +/- acres with unobstructed western Jemez mountain views. Saltillo tiled floors, ceiling latillas, and nichos add old world Santa Fe charm to this modern home. Enter through double front wooden doors into a large formal living room. The good-sized kitchen has a breakfast bar plus room to eat-in, in addition to a formal dining room. There is a second less formal living area which can function as a media room and gathering area close to the kitchen. Spacious master suite with kiva and a meditation/exercise room off the ensuite bath. Connected to the master bedroom is a sunroom perfect for plants with passive solar heat. Two guest bedrooms with private patio offer flex space as an office/studio. Living room has access to a generous portal and flagstone patio with built-in fire pit for year-round entertaining. Large dog run and 2-car attached garage. Property is adjacent to the La Mariposa Green Belt and near the La Tierra Trails. Convenient location with easy access to 599 and The Santa Fe Plaza as well as the Santa Fe Opera.

DARLENE STREIT | 505.920.8001 | DSTREIT@DSTREIT.COM



B E D R O O M S

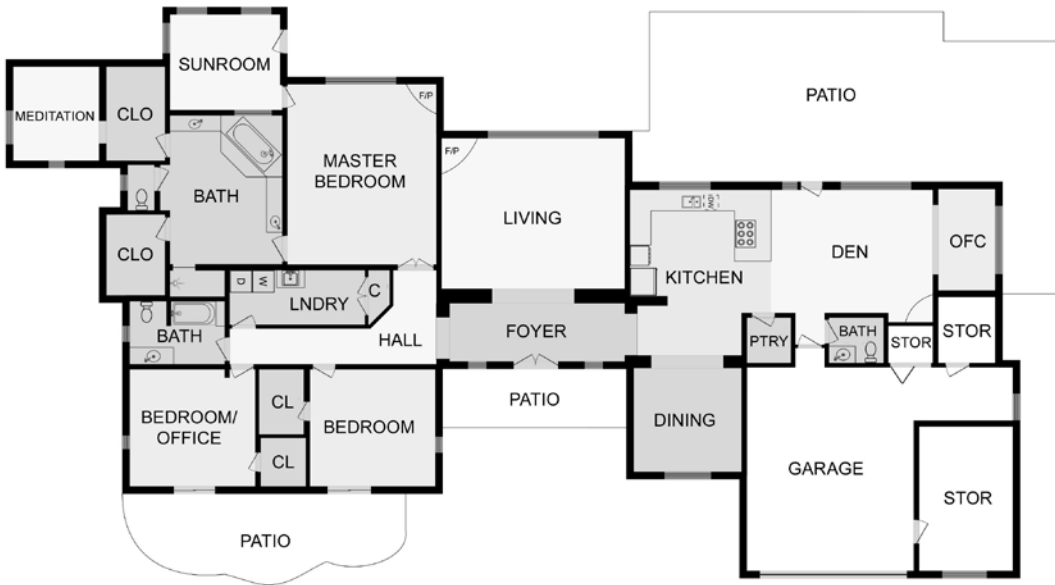
⇒ Sunroom ⇒ Meditation/Exercise Room ⇒ Patio and Portal



DETAILS

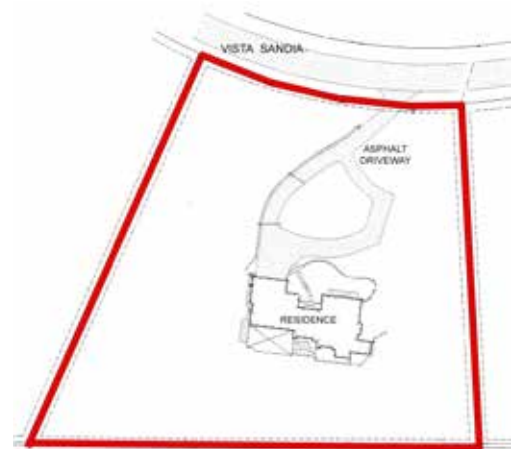
- 3 Bedrooms
- Baths: 2 Full, 1 Half
- 3,425 SF
- 2.37 Acres
- Built in 1992
- Frame, Stucco Construction *
- Flat Roof
- 2 Garage Spaces
- 3 Fireplaces
- Gas Cooking
- Radiant In Floor Heating
- Evaporative, Central Cooling
- Septic
- County Water
- Internet: Cable, DSL
- Natural Gas
- Landscaped
- Insulated Windows
- HOA Fees: From 2020, \$1200 Per Year
- HOA Fees Cover: Community Area & Road Maintenance
- Drip/Sprinkler System
- Security System

*Buyer to Verify



Above floor plan provided by iGuide and may not be entirely accurate.

Plat depiction is for illustration purposes and may not be entirely accurate.



DARLENE STREIT

SANTA FE REAL ESTATE PROPERTY



DARLENE STREIT
 505.920.8001 • dstreit@dstreit.com
 Office: 417 E. Palace Avenue
 Santa Fe NM 87501

SantaFeRealEstateProperty.com

DarleneStreit.com

SantaFeLuxuryHomesandLand.com



View
Listing
Online

© Sotheby's International Realty, Inc. All rights reserved. Sotheby's International Realty® is a registered trademark. This material is based upon information which we consider reliable but because it has been supplied by third parties, we cannot represent that it is accurate or complete and it should not be relied upon as such. This offering is subject to errors, omissions, changes including price or withdrawal without notice. If your property is listed with a real estate broker, please disregard. It is not our intention to solicit the offerings of other real estate brokers. We are happy to work with them and cooperate fully. Operated by Sotheby's International Realty, Inc. Real estate agents affiliated with Sotheby's International Realty, Inc. are independent contractor sales associates and are not employees of Sotheby's International Realty, Inc. Equal Housing Opportunity. Sotheby's International Realty, 326 Grant Ave, Santa Fe, NM 87501, 505-988-2533.

Sotheby's
INTERNATIONAL REALTY