



4 CLOVE CT



3 Bedroom • 4 Bath • 2,863 SF • \$1,500,000 • MLS #202102497



## FEATURES

⇒ Spacious Portal ⇒ Outdoor Fireplace ⇒ Open Concept Living/Dining/Kitchen



# 4 CLOVE CT

3 Bedroom • 4 Bath • 2,863 SF • \$1,500,000 • MLS #202102497

**3** bedroom 3.5 bath soft contemporary to-be-built home in the Estates I of Las Campanas. Thoughtfully designed by Hoopes + Associates Architects on 2.3 + acres with stunning mountain views. Entry foyer gracefully leads into an open concept living, dining and kitchen with access to a spacious back portal with outdoor fireplace. Split bedroom plan. Luxurious master suite includes a courtyard garden, generous dressing room/closet and master bath with dual sinks, soaking tub and walk-in shower. In addition to the 2 guest bedrooms with ensuite baths, there is a separate study or office. Tile and wood floors throughout. Green features include tankless hot water and rainwater harvesting. Landscaped cul-de-sac lot. Las Campanas is a premier master designed community with easy access to all the cultural, culinary and recreational amenities of Santa Fe.

DARLENE STREIT | 505.920.8001 | DSTREIT@DSTREIT.COM



## FEATURES

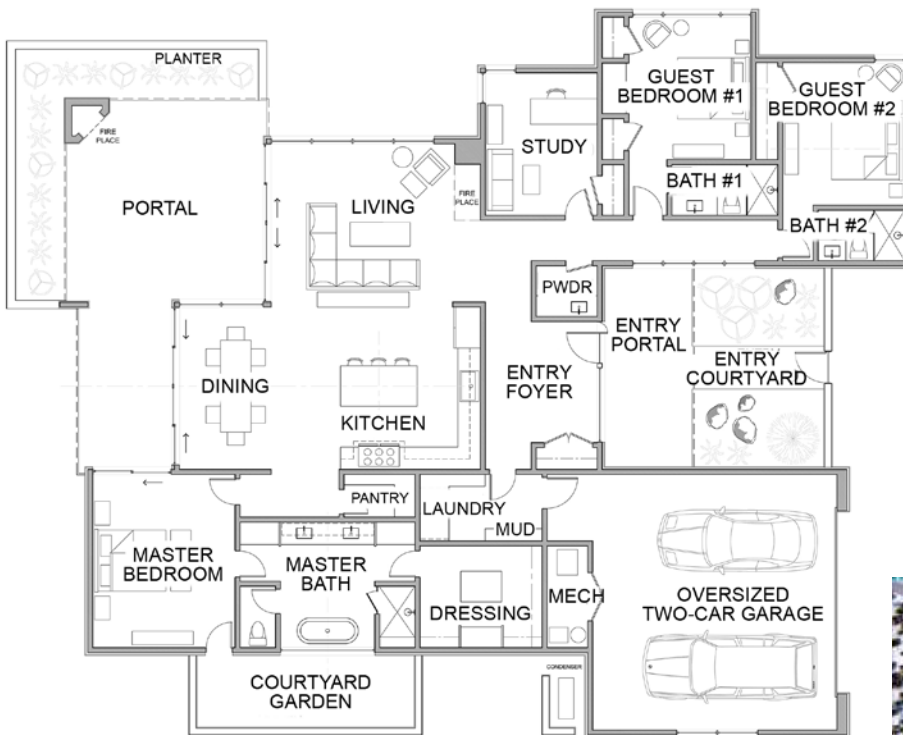
↪ Split Bedroom Plan ↪ Master Suite ↪ Courtyard Garden



# DETAILS

- 3 Bedrooms
- Baths: 1 Full, 2 Three Quarter, 1 Half
- 2863 SF
- 2.369 Acres
- To Be Built
- Wood, Tile Floors
- Frame, Stucco Construction \*
- Flat, Membrane Roof
- 2 Garage Spaces
- 2 Fireplace
- Gas Cooking
- Forced Air, Radiant In Floor Heating
- Refrigerator, Central Cooling
- Community Sewer
- County Water
- Internet: Cable, DSL, Satellite Dish
- HOA Fees: For 2020, \$2861 Yearly
- HOA Fees Cover: Community Area & Road Maintenance, Security
- Insulated Windows
- Landscaped, Drip/Sprinkler System
- Tankless Hot Water
- Rainwater Harvesting

\*Buyer to Verify



*Above floor plan for illustration purposes and may not be entirely accurate.*

*Plat depiction is for illustration purposes and may not be entirely accurate.*



**DARLENE STREIT**

SANTA FE REAL ESTATE PROPERTY



**DARLENE STREIT**  
 505.920.8001 • dstreit@dstreit.com  
 Office: 417 E. Palace Avenue  
 Santa Fe NM 87501

SantaFeRealEstateProperty.com

DarleneStreit.com

SantaFeLuxuryHomesandLand.com



View  
Listing  
Online

© Sotheby's International Realty, Inc. All rights reserved. Sotheby's International Realty® is a registered trademark. This material is based upon information which we consider reliable but because it has been supplied by third parties, we cannot represent that it is accurate or complete and it should not be relied upon as such. This offering is subject to errors, omissions, changes including price or withdrawal without notice. If your property is listed with a real estate broker, please disregard. It is not our intention to solicit the offerings of other real estate brokers. We are happy to work with them and cooperate fully. Operated by Sotheby's International Realty, Inc. Real estate agents affiliated with Sotheby's International Realty, Inc. are independent contractor sales associates and are not employees of Sotheby's International Realty, Inc. Equal Housing Opportunity. Sotheby's International Realty, 326 Grant Ave, Santa Fe, NM 87501, 505-988-2533.

**Sotheby's**  
INTERNATIONAL REALTY