



1563 KOKOSORI LN



2 Bedroom • 2 Bath • 1,184 SF • \$385,000 • MLS# 202103167



LIVING & DINING

⇨ Skylights & Transom Windows ⇨ Breakfast Bar



1563 KOKOSORI LN

2 Bedroom • 2 Bath • 1,184 SF • \$385,000 • MLS# 202103167

2 bedroom 2 bath home built by Master Green Builder, Arch Sproul, in the Kachina Ridge Subdivision. Mountain views and no interior stairs. Stylish accents include nichos, transom windows, and skylights. Open concept living and dining area. Sizeable C-shaped kitchen with 3 curved windows, stainless-steel appliances and breakfast bar for informal dining. 2 master suites with ensuite bathrooms. Tile and laminate floors throughout. Green features abound with Energy Star appliances, HERS Index, low flow fixtures and xeriscaping. One-car garage plus 2 off street parking spaces. Convenient location close to shopping, restaurants & county trails.

DARLENE STREIT | 505.920.8001 | DSTREIT@DSTREIT.COM



B E D R O O M S

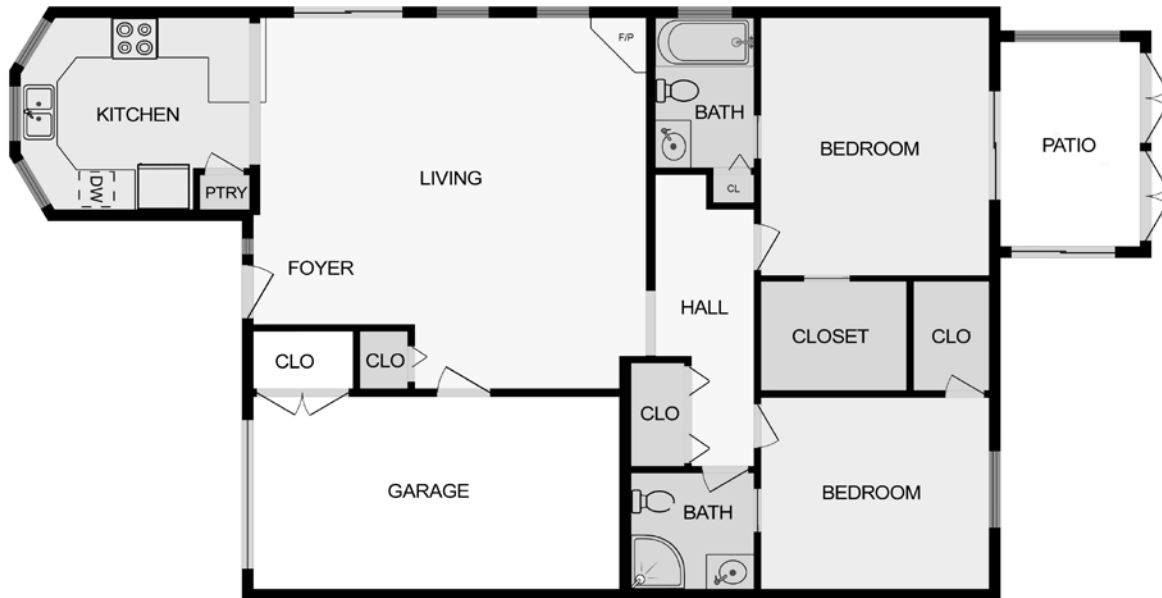
⇒ Ensuite Bathrooms ⇒ One-Car Garage



DETAILS

- 2 Bedrooms
- Baths: 1 Full, 1 Three Quarter
- 1184 SF
- .07 Acre
- Built in 2016
- Frame, Stucco Construction *
- Flat Roof
- 1 Garage Space
- 2 Off Street Parking Spaces
- 1 Fireplace
- Gas & Electric Cooking
- Forced Air Heating
- City Sewer
- City Water
- Internet: Cable, DSL
- Insulated Windows
- HOA Fees: From 2020, \$100 Per Year
- HOA Fees Cover: Community Area & Road Maintenance
- Xeriscaped
- EnergyStar Appliances
- HERS Rated
- Low Flow Fixtures

*Buyer to Verify



Above floor plan provided by iGuide and may not be entirely accurate.

Plat depiction is for illustration purposes and may not be entirely accurate.

DARLENE STREIT

SANTA FE REAL ESTATE PROPERTY



DARLENE STREIT
 505.920.8001 ▪ dstreit@dstreit.com
 Office: 417 E. Palace Avenue
 Santa Fe NM 87501

SantaFeRealEstateProperty.com

DarleneStreit.com

SantaFeLuxuryHomesandLand.com



View
Listing
Online

© Sotheby's International Realty, Inc. All rights reserved. Sotheby's International Realty® is a registered trademark. This material is based upon information which we consider reliable but because it has been supplied by third parties, we cannot represent that it is accurate or complete and it should not be relied upon as such. This offering is subject to errors, omissions, changes including price or withdrawal without notice. If your property is listed with a real estate broker, please disregard. It is not our intention to solicit the offerings of other real estate brokers. We are happy to work with them and cooperate fully. Operated by Sotheby's International Realty, Inc. Real estate agents affiliated with Sotheby's International Realty, Inc. are independent contractor sales associates and are not employees of Sotheby's International Realty, Inc. Equal Housing Opportunity. Sotheby's International Realty, 326 Grant Ave, Santa Fe, NM 87501, 505-988-2533.

Sotheby's
INTERNATIONAL REALTY