



32 VIA BELLA



4 Bedroom • 3 Bath • 2,130 SF • \$775,000 • MLS #202102528



LIVING & DINING

↻ Great Room ↻ Solar Tubes ↻ Quartz Counter Bar



VIA BELLA

4 Bedroom • 3 Bath • 2,130 SF • \$775,000 • MLS #202102528

Enjoy spectacular views of the Sangre de Cristo and Jemez mountains in this 4 bedroom 3 bath 2,061 +/- sq ft home and casita, located in the community of Tessera. The 1,819 +/- square foot, environmentally conscious Sunrose eco-home has over \$100k in upgrades from the base model and features a gracious contemporary Santa Fe style. Main great room and adjoining kitchen are designed for easy entertaining. The living area includes a gas kiva fireplace and large windows, and the adjoining kitchen is designed for ease of use while enjoying camaraderie, with an extended quartz counter bar area for seating up to 5, stainless steel appliances and custom cabinetry. Tiled floors and full wood doors throughout, with solar tubes for ease of illumination. Gracious master suite opens to the generous ensuite bath with dual walk in closets. Third bedroom may also serve as an office. The 311 +/- sq ft casita includes a convenient kitchenette, ensuite bath and walk in closet. Exterior is professionally landscaped with fountain, rear grill area and hot tub electrical hookup. Tessera, with its extensive trail system, dedicated open space and breathtaking views, is less than six miles from the Santa Fe Plaza, and all the culinary and cultural delights of the City Different.

DARLENE STREIT | 505.920.8001 | DSTREIT@DSTREIT.COM



B E D R O O M S

↔ Master Suite ↔ Casita

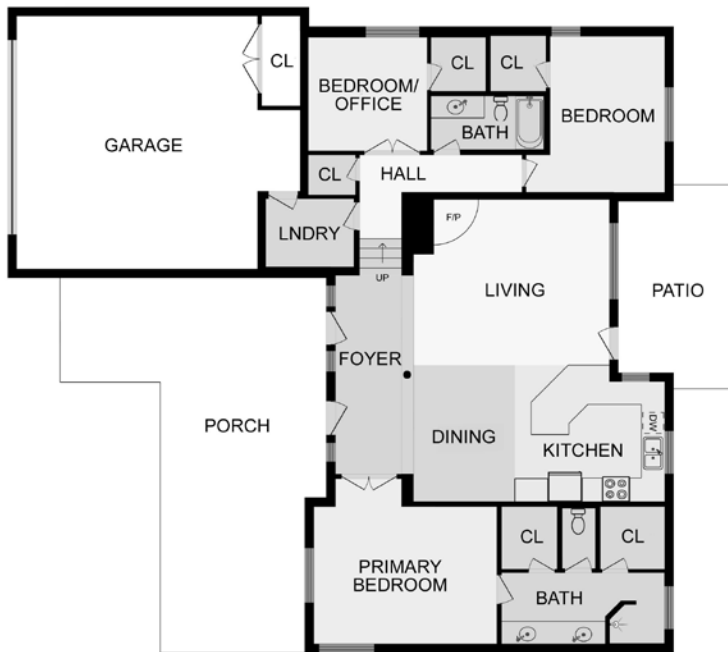


DETAILS

- 4 Bedrooms
- Baths: 1 Full, 3 Three Quarter
- Main House 1819 SF
Casita 311 SF
- 0.34 Acre
- Built in 2017
- Frame, Stucco Construction *
- Flat, Membrane Roof
- 2 Garage Spaces
- 1 Fireplace
- Gas Cooking
- Forced Air, Gas Heating
- Refrigerator, Central Cooling
- Community Sewer
- County Water
- Internet: Cable, DSL
- HOA Fees: \$1000 Per Year for HOA, \$400 Per Year for Sewer
- HOA Fees Cover: Road Maintenance, Community Area Maintenance
- Insulated Windows
- Drip/Sprinkler System

*Buyer to Verify

MAIN FLOOR



CASITA



Above floor plan provided by iGuide and may not be entirely accurate.

Plat depiction is for illustration purposes and may not be entirely accurate.



DARLENE STREIT

SANTA FE REAL ESTATE PROPERTY



DARLENE STREIT
 505.920.8001 • dstreit@dstreit.com
 Office: 417 E. Palace Avenue
 Santa Fe NM 87501

SantaFeRealEstateProperty.com

DarleneStreit.com

SantaFeLuxuryHomesandLand.com



View
Listing
Online

© Sotheby's International Realty, Inc. All rights reserved. Sotheby's International Realty® is a registered trademark. This material is based upon information which we consider reliable but because it has been supplied by third parties, we cannot represent that it is accurate or complete and it should not be relied upon as such. This offering is subject to errors, omissions, changes including price or withdrawal without notice. If your property is listed with a real estate broker, please disregard. It is not our intention to solicit the offerings of other real estate brokers. We are happy to work with them and cooperate fully. Operated by Sotheby's International Realty, Inc. Real estate agents affiliated with Sotheby's International Realty, Inc. are independent contractor sales associates and are not employees of Sotheby's International Realty, Inc. Equal Housing Opportunity. Sotheby's International Realty, 326 Grant Ave, Santa Fe, NM 87501, 505-988-2533.

Sotheby's
INTERNATIONAL REALTY