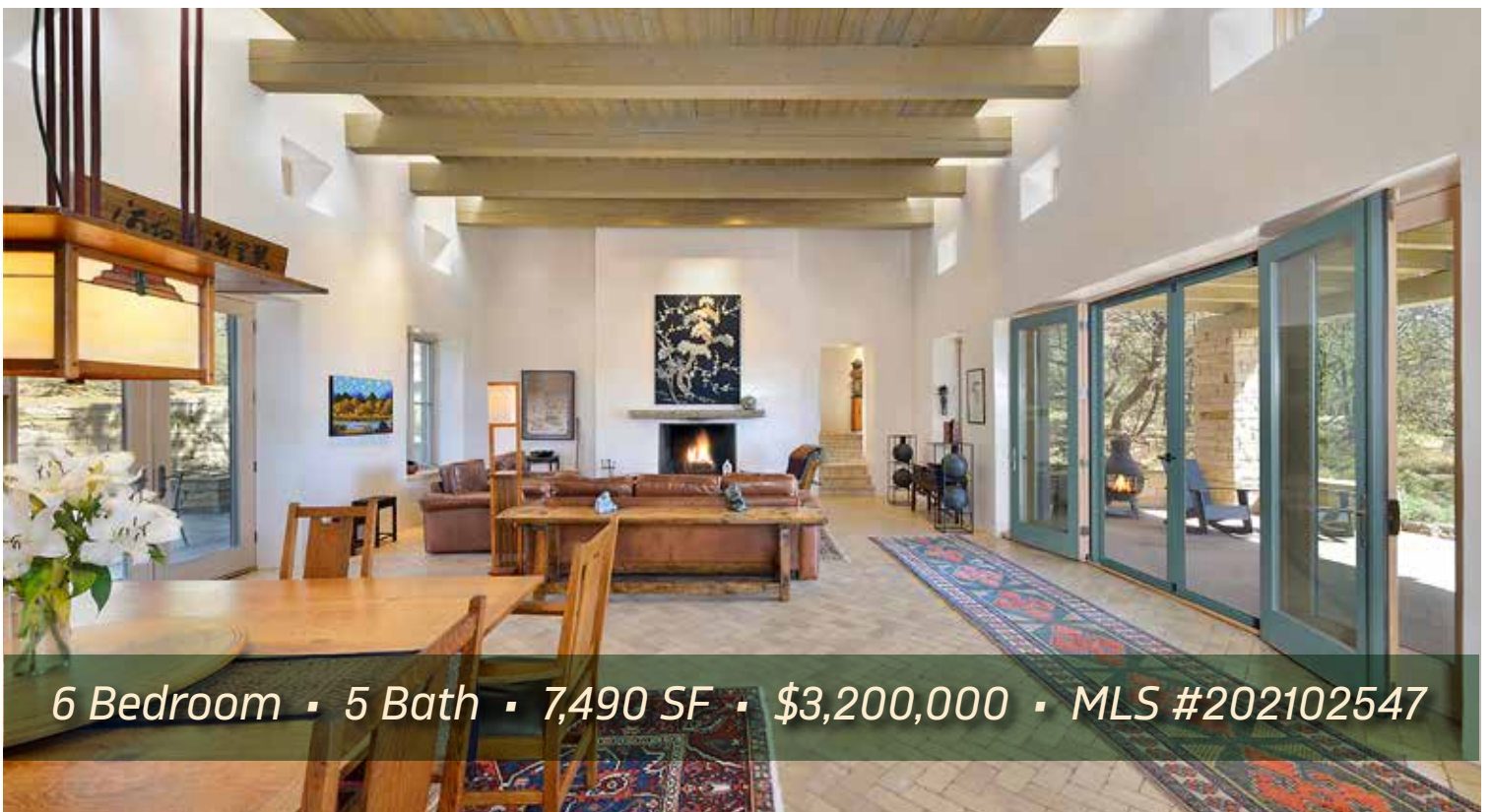




1300 CAMINO DE CRUZ BLANCA



6 Bedroom • 5 Bath • 7,490 SF • \$3,200,000 • MLS #202102547



LIVING & DINING

⇒ Formal Living Room ⇒ Gourmet Kitchen ⇒ Brick Floors



1300 CAMINO DE CRUZ BLANCA

6 Bedroom • 5 Bath • 7,490 SF • \$3,200,000 • MLS #202102547

Stunning 6 bedroom 4.5 bath contemporary Pueblo-style home and guesthouse in the Historic East-side with spectacular views of mountains and the natural environment. Designed by Wurzburger Architects to take advantage of the 2.3 + acre site, the unique curved floor plan has walls of windows and stone that link public and private spaces while capturing cloud-dotted New Mexican skies by day and city lights at night. Enjoy the grand formal living room, media room, and library/den. The gourmet kitchen features light wood cabinetry, brick flooring, built-in hutch, Viking 6-burner and griddle range with two ovens, plus an additional built-in convection oven, Sub-Zero refrigerator, center island, an eat-in area for 6 with built-in banco seating, and a spacious walk-in pantry. The master and guest bedrooms are in different wings of the home. The 1,137+ sq. ft. guesthouse has 2 living areas, a full kitchen, 2 bedrooms, one bath, and its own garage. Savor the outdoors with a 50 ft lap pool, hot tub, bocce ball court and portal for al fresco dining. Solar Photovoltaic grid tied. Perfect location close to Museum Hill, St. John's College, Atalaya Lower and Dorothy Stewart Trailheads, Canyon Road and The Santa Fe Plaza.

DARLENE STREIT | 505.920.8001 | DSTREIT@DSTREIT.COM



FEATURES

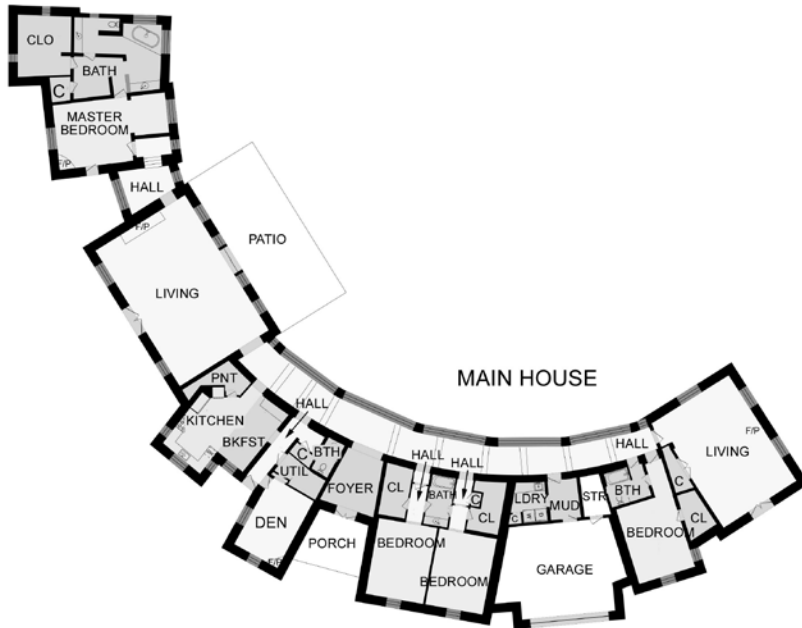
↻ Master Suite ↻ Beamed Ceilings ↻ Guest House



DETAILS

- 6 Bedrooms
- Baths: 4 Full, 1 Half
- Main House 6353 SF
Guest House 1137 SF
- 2.37 Acres
- Built in 1997
- Frame, Stucco Construction *
- Flat Roof
- 4 Garage Spaces
- 5 Fireplaces
- Gas Cooking
- Radiant In Floor, Electric, Wood Stove Heating
- Electric: Public and Active Solar (Main House)
- Septic
- City Water
- Internet: Cable, DSL
- Lap Pool
- Bocce Ball Court
- Voluntary Road Assessment \$150 Per Year - Includes Road Maintenance & Snow Removal
- Insulated Windows
- Hot Tub
- Drip/Sprinkler System
- Security System

*Buyer to Verify



Above floor plan provided by iGuide and may not be entirely accurate.

Plat depiction is for illustration purposes and may not be entirely accurate.



DARLENE STREIT

SANTA FE REAL ESTATE PROPERTY



DARLENE STREIT

505.920.8001 • dstreit@dstreit.com

Office: 417 E. Palace Avenue

Santa Fe NM 87501

SantaFeRealEstateProperty.com

DarleneStreit.com

SantaFeLuxuryHomesandLand.com



View
Listing
Online

© Sotheby's International Realty, Inc. All rights reserved. Sotheby's International Realty® is a registered trademark. This material is based upon information which we consider reliable but because it has been supplied by third parties, we cannot represent that it is accurate or complete and it should not be relied upon as such. This offering is subject to errors, omissions, changes including price or withdrawal without notice. If your property is listed with a real estate broker, please disregard. It is not our intention to solicit the offerings of other real estate brokers. We are happy to work with them and cooperate fully. Operated by Sotheby's International Realty, Inc. Real estate agents affiliated with Sotheby's International Realty, Inc. are independent contractor sales associates and are not employees of Sotheby's International Realty, Inc. Equal Housing Opportunity. Sotheby's International Realty, 326 Grant Ave, Santa Fe, NM 87501, 505-988-2533.

Sotheby's
INTERNATIONAL REALTY