



145 & 157 BROWNELL HOWLAND



4 Bedroom • 4 Bath • 4,044 SF • \$2,100,000 • MLS# 202102779



LIVING & DINING

⇒ Formal Dining Room ⇒ Gourmet Kitchen ⇒ Refinished Floors



145 & 157 BROWNELL HOWLAND

4 Bedroom • 4 Bath • 4,044 SF • \$2,100,000 • MLS# 202102779

Exquisite 4 bedroom 4 bath residence on 1.34 acres on Brownell Howland, one of the most prestigious addresses in Santa Fe. Open concept floor plan with high ceilings and windows that allow the magnificent views to permeate the home and draw you outside to the generous deck that is great for entertaining or watching the sun set over the Jemez mountains. Elegant living room with dramatic fireplace and tall built-in book/display cases. The partially remodeled (2021) gourmet kitchen is appointed with granite countertops, updated appliances, corner kiva and large center island. Formal dining room features a chandelier and skylight overhead. Many 2021 updates and improvements including stylish bathroom remodels, new windowpanes, and refinished floors. Step outside for a stroll through the landscaped yard with pine trees and a peaceful stone fountain. Also included in the sale is the adjacent 2.5 +/- acre property with 2 building envelopes and a water supply (544,000 gallons of annual deliverability). Property with the landscaped pool owns a 56% controlling interest in a water well now included in the Aamodt water settlement. Spectacular views from these exceptional properties include the Jemez Mountains to the west and the stunning Sangre de Cristo Mountains to the east, while views to the north reach beyond the Tesuque Badlands all the way to San Antonio Mountain near the Colorado border. Just minutes from The Santa Fe Plaza yet with the feeling of being removed in the country.

DARLENE STREIT | 505.920.8001 | DSTREIT@DSTREIT.COM



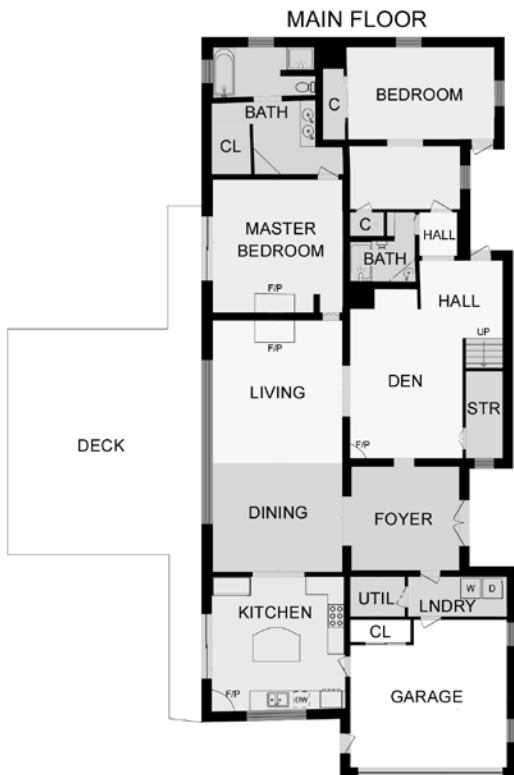
B E D R O O M S

↻ Beam Ceilings ↻ Abundant Natural Light



DETAILS

- 4 Bedrooms
- Baths: 1 Full, 3 Three Quarter
- 4,044 SF
- 3.90 Acres
- Built in 1955
- Wood, Tile, Carpet Floors
- Block, Frame, Stucco Construction *
- Flat, Foam Roof
- 2 Garage Spaces
- 3 Off Street Parking Spaces
- 7 Fireplaces
- Gas Cooking
- Hot Water Baseboard, Forced Air Heating
- Septic
- City Water, Shared Well
- Internet: Cable, DSL, Satellite
- Landscaped
- Security System
- *Buyer to Verify



Above floor plan provided by iGuide and may not be entirely accurate.

Plat depiction is for illustration purposes and may not be entirely accurate.

DARLENE STREIT

SANTA FE REAL ESTATE PROPERTY



DARLENE STREIT
505.920.8001 • dstreit@dstreit.com
Office: 417 E. Palace Avenue
Santa Fe NM 87501

SantaFeRealEstateProperty.com

DarleneStreit.com

SantaFeLuxuryHomesandLand.com



**View
Listing
Online**

© Sotheby's International Realty, Inc. All rights reserved. Sotheby's International Realty® is a registered trademark. This material is based upon information which we consider reliable but because it has been supplied by third parties, we cannot represent that it is accurate or complete and it should not be relied upon as such. This offering is subject to errors, omissions, changes including price or withdrawal without notice. If your property is listed with a real estate broker, please disregard. It is not our intention to solicit the offerings of other real estate brokers. We are happy to work with them and cooperate fully. Operated by Sotheby's International Realty, Inc. Real estate agents affiliated with Sotheby's International Realty, Inc. are independent contractor sales associates and are not employees of Sotheby's International Realty, Inc. Equal Housing Opportunity. Sotheby's International Realty, 326 Grant Ave, Santa Fe, NM 87501, 505-988-2533.

Sotheby's
INTERNATIONAL REALTY