



365 1/2 GARCIA ST #2



In the Historic Eastside



LIVING & DINING

⇒ Open Design ⇒ Fireplace ⇒ Wood Floors



365 1/2 GARCIA ST #2

2 Bedroom • 2 Bath • 1550 SF • \$1,075,000 • MLS# 202004132

Classic 2 bedroom 2 bath Territorial style home in the heart of the Historic Eastside. Light from plentiful windows and skylights enhance the ambiance of this home. Open living and dining with fireplace and warm wood floors. Split bedrooms with master suite and guest bedroom on opposite sides of the house. Separate mudroom with closet provides extra storage. Brick patio with landscaping offers extra space for living, dining and entertaining.

Two off-street parking spots. Tucked into a hidden compound across the street from Santa Fe's oldest coffee shop and newsstand, Downtown Subscription, and Garcia Street Books. Charming pied-a-terre just blocks away from Canyon Road and some of Santa Fe's finest restaurants and galleries.

DARLENE STREIT | 505.920.8001 | DSTREIT@DSTREIT.COM



BED ROOMS

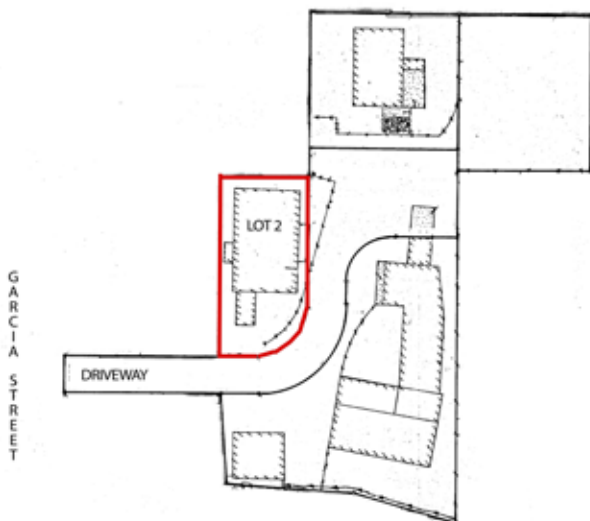
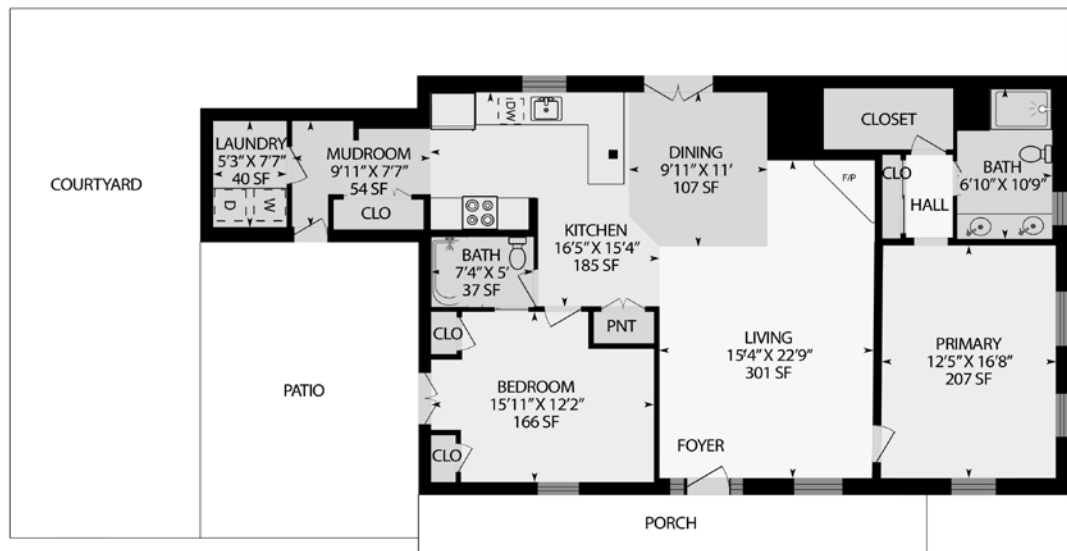
↪ Master Suite ↪ Guest Bedroom ↪ Brick Patio



DETAILS

- 2 Bedrooms
- Baths: 1 Full, 1 Three Quarter
- 1550 SF
- .07 Acre
- Frame, Stucco Construction *
- Flat, Modified Bitumen Roof
- 1 Fireplace
- Gas Cooking
- Forced Air, Radiant Heating
- Refrigerator, Central Cooling
- City Sewer
- City Water
- Internet: Cable, DSL
- Insulated Windows
- HOA Fees: \$250 Per Year
- HOA Fees Cover: Sewer and Road Agreement

*Buyer to Verify



Above measurements provided by iGuide and may not be entirely accurate.

Plat depiction is for illustration purposes and may not be entirely accurate.

DARLENE STREIT

SANTA FE REAL ESTATE PROPERTY



DARLENE STREIT
505.920.8001 • dstreit@dstreit.com
 Office: 417 E. Palace Avenue
 Santa Fe NM 87501

SantaFeRealEstateProperty.com

DarleneStreit.com

SantaFeLuxuryHomesandLand.com



View
Listing
Online

© Sotheby's International Realty, Inc. All rights reserved. Sotheby's International Realty® is a registered trademark. This material is based upon information which we consider reliable but because it has been supplied by third parties, we cannot represent that it is accurate or complete and it should not be relied upon as such. This offering is subject to errors, omissions, changes including price or withdrawal without notice. If your property is listed with a real estate broker, please disregard. It is not our intention to solicit the offerings of other real estate brokers. We are happy to work with them and cooperate fully. Operated by Sotheby's International Realty, Inc. Real estate agents affiliated with Sotheby's International Realty, Inc. are independent contractor sales associates and are not employees of Sotheby's International Realty, Inc. Equal Housing Opportunity. Sotheby's International Realty, 326 Grant Ave, Santa Fe, NM 87501, 505-988-2533.

Sotheby's
INTERNATIONAL REALTY